

CENTRAL SCHOOL

Pontiac, MI 48342
FACT SHEET

OVERVIEW

Historic Romanesque (circa 1893) **CENTRAL SCHOOL** is listed on the National Register of Historic Places. Perched on a hillside next to Pontiac City Hall, this three-and-one-half story brick building with slate roof overlooks downtown and offers immediate access to numerous restaurants, clubs and businesses within the central business district. Commuting is convenient via easy access to M-59, Woodward Ave., Orchard Lake Road and I-75.

This "landmark" building will make a great corporate headquarters! **CENTRAL SCHOOL** offers tenants high visibility and close proximity to the Ameritech switch, plus the best of the past and an eclectic mix of interior design elements and edge spaces.

Multi-tenant and single-tenant possibilities available!

FAST FACTS

BUILDING ADDRESS

47700 Woodward Ave.
Pontiac, Michigan 48342

LOCATION

S.E. Corner of M-59
and Woodward Ave.
Overlooking Historic
Downtown Pontiac

USE

Professional Office/
Technology/Education

PARKING

120 Spaces On-Site

FLOORS

Four

RENTABLE AREA

Minimum: 2,500 s.f.

Maximum: 28,000 s.f. (Phase 1)
15,000 s.f. (Phase 2)

MAXIMUM FLOOR AREA

9,500 s.f.

YOU'RE IN GOOD COMPANY

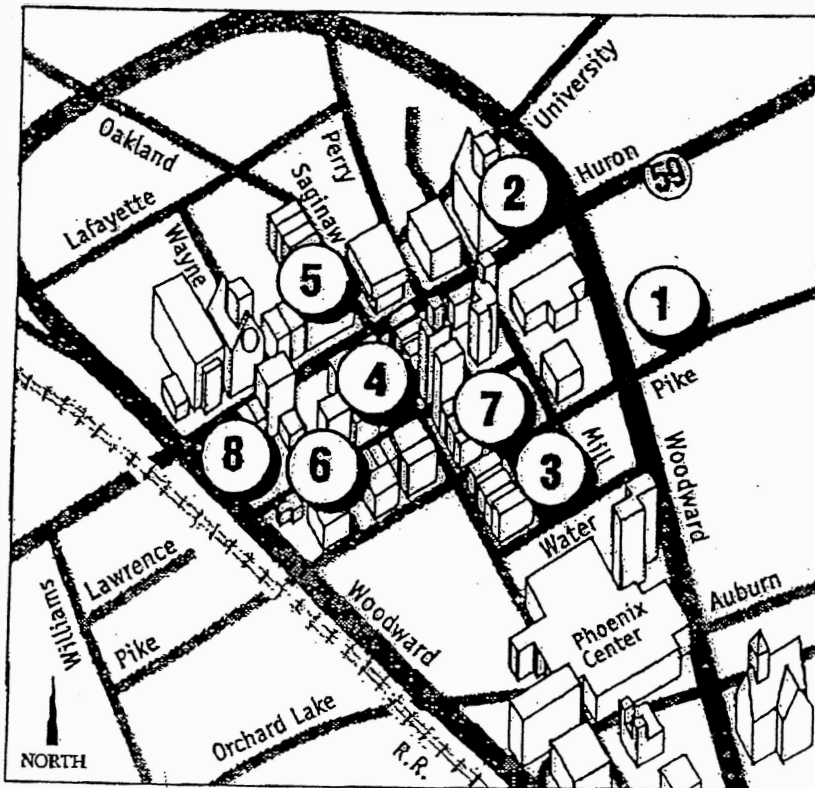
General Motors
Daimler Chrysler AG
Ford Motor Company
Rite-Aid Drug Stores
Core Industries Inc.
PMH Corporation
Creative Industries
Volkswagon of America
FANUC Robotics
North America, Inc.
GKN Automotive
ITT Automotive
Siemens Automotive
Jabil Circuit Inc.
TRW Inc.
Williams International
Chrysler Technology Park
Center Pointe



CENTRAL SCHOOL

Pontiac, MI 48342
LOCATION MAP

HISTORIC DOWNTOWN PONTIAC



New business and renovation projects under way in downtown Pontiac:

1. **CENTRAL SCHOOL HISTORIC RENOVATION**
2. Ameritech tandem switch
3. New loft/condos proposed
4. **37 & 41 N. SAGINAW HISTORIC RENOVATION**
5. Former bank renovated
6. **29 W. LAWRENCE HISTORIC RENOVATION**
7. Strand Theater
8. New offices / loft renovation

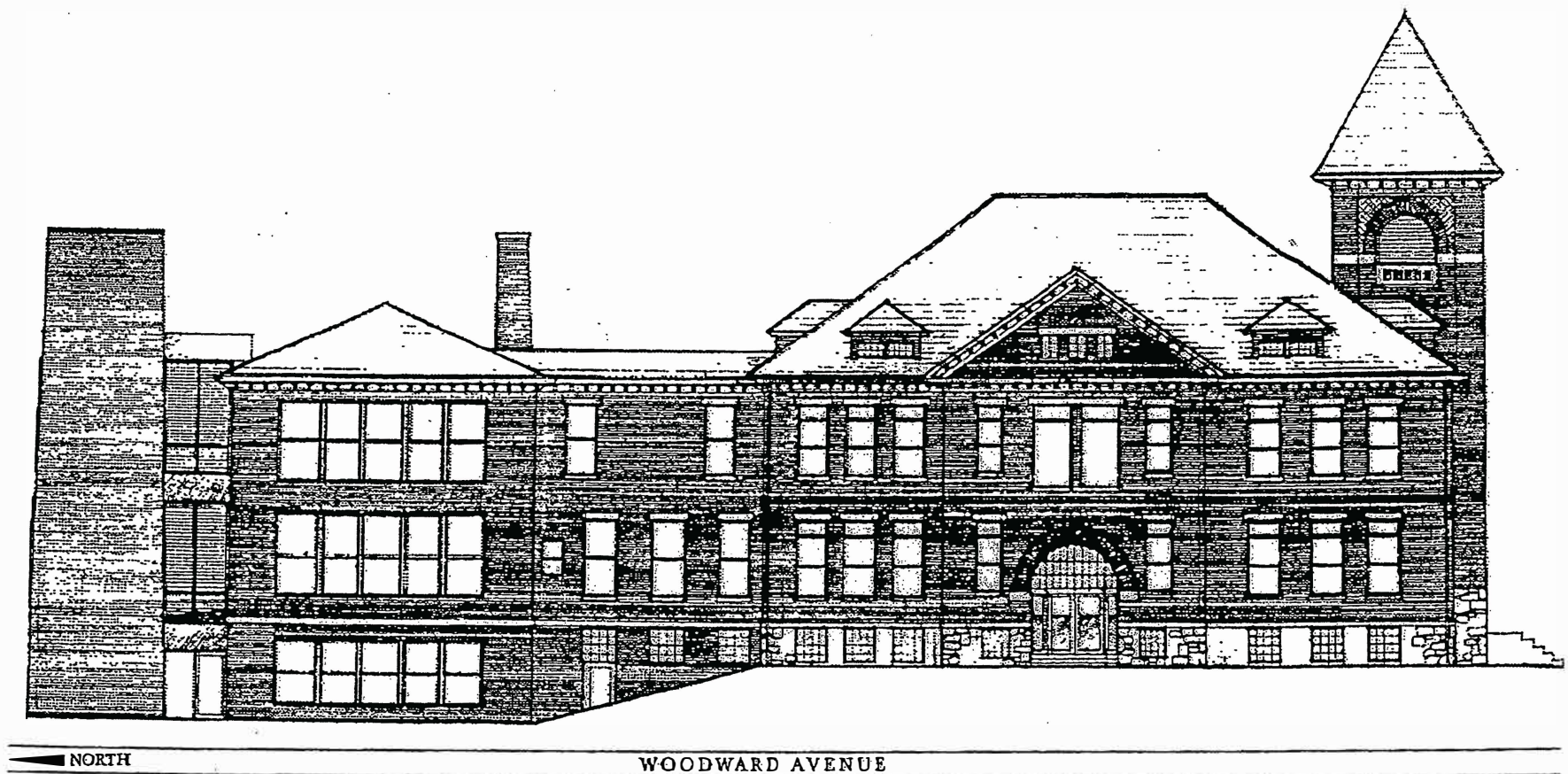


DOMINION
REAL ESTATE ADVISORS

CENTRAL SCHOOL

Pontiac, MI 48342

WEST ELEVATION - PHASE 1 (NOT TO SCALE.)

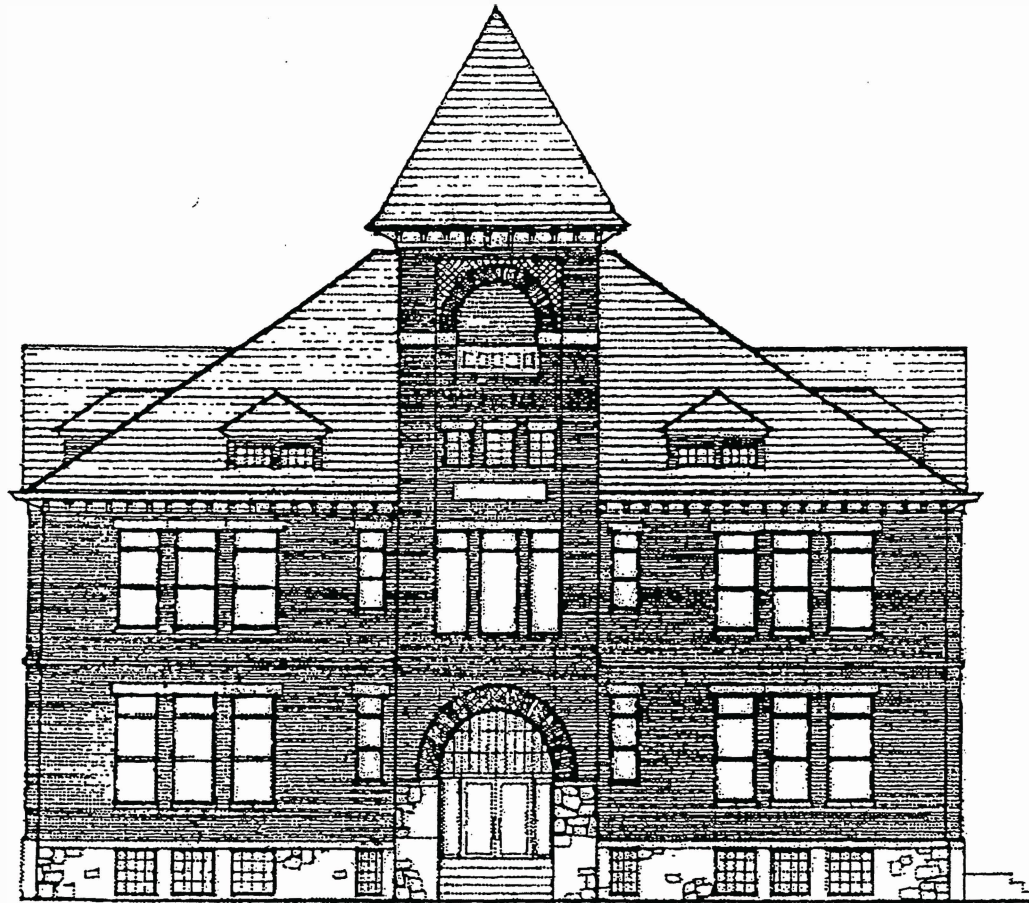


DOMINION
REAL ESTATE ADVISORS

CENTRAL SCHOOL

Pontiac, MI 48342

SOUTH ELEVATION - PHASE 1 {NOT TO SCALE}



PIKE STREET

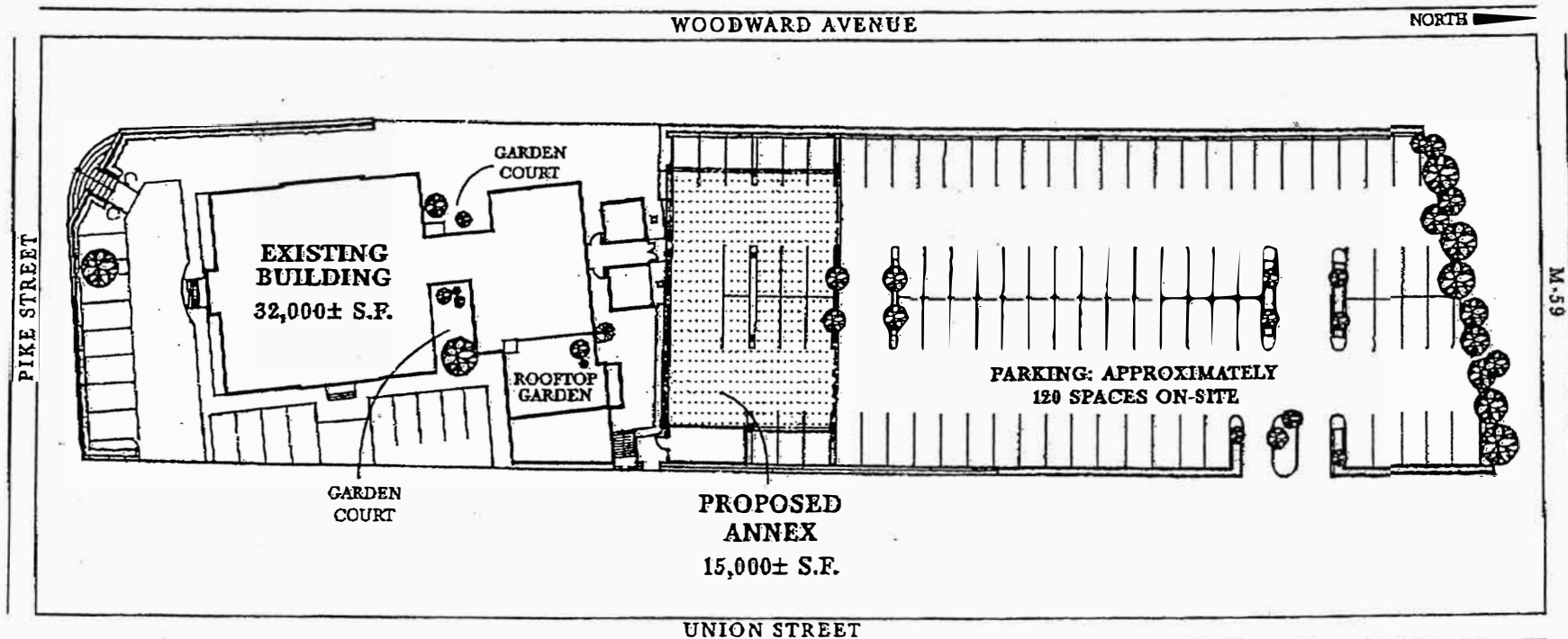


DOMINION
REAL ESTATE ADVISORS

CENTRAL SCHOOL

Pontiac, MI 48342

SITE MAP - PHASE 1 (NOT TO SCALE.)

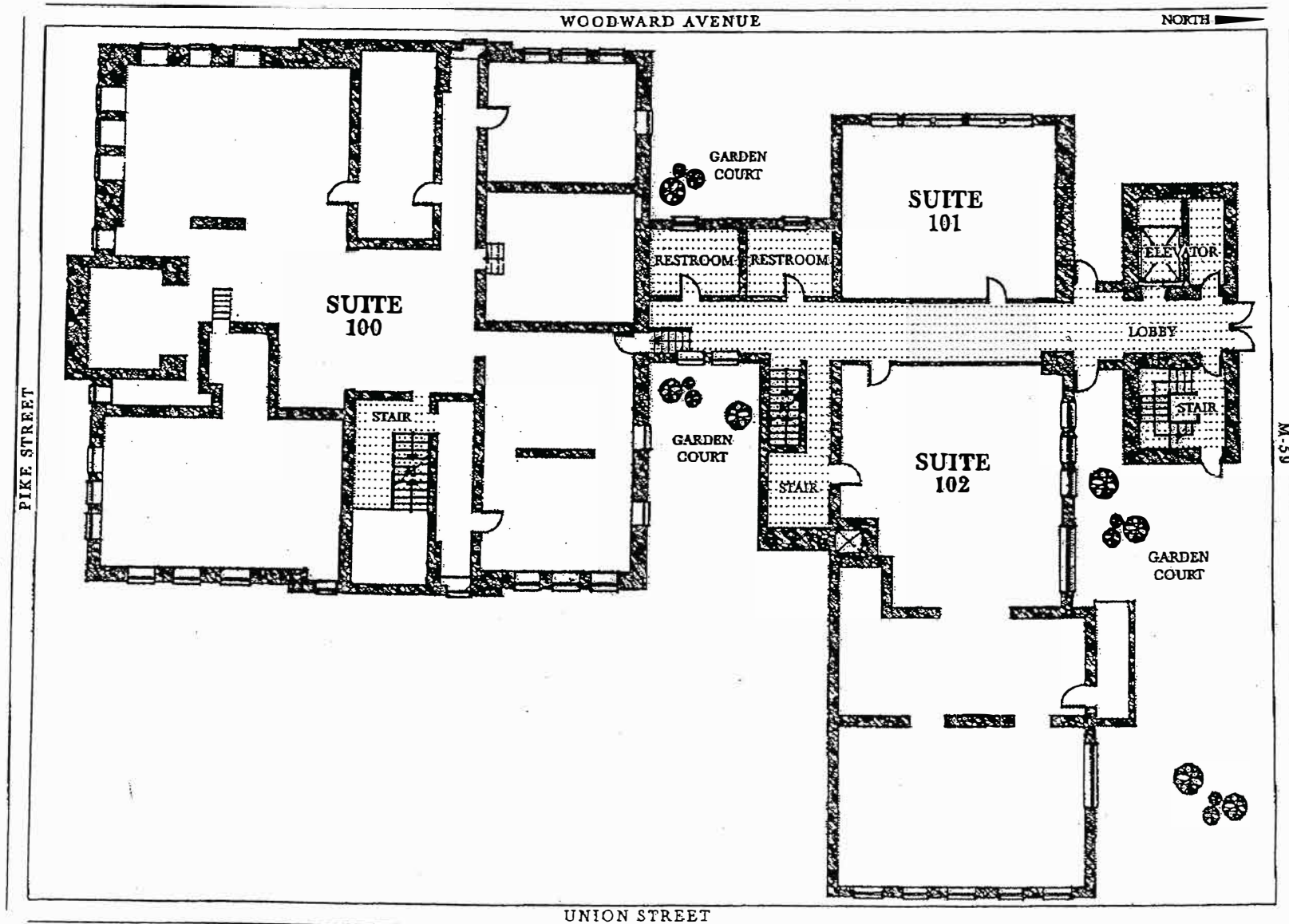


DOMINION
REAL ESTATE ADVISORS

CENTRAL SCHOOL

Pontiac, MI 48342 -

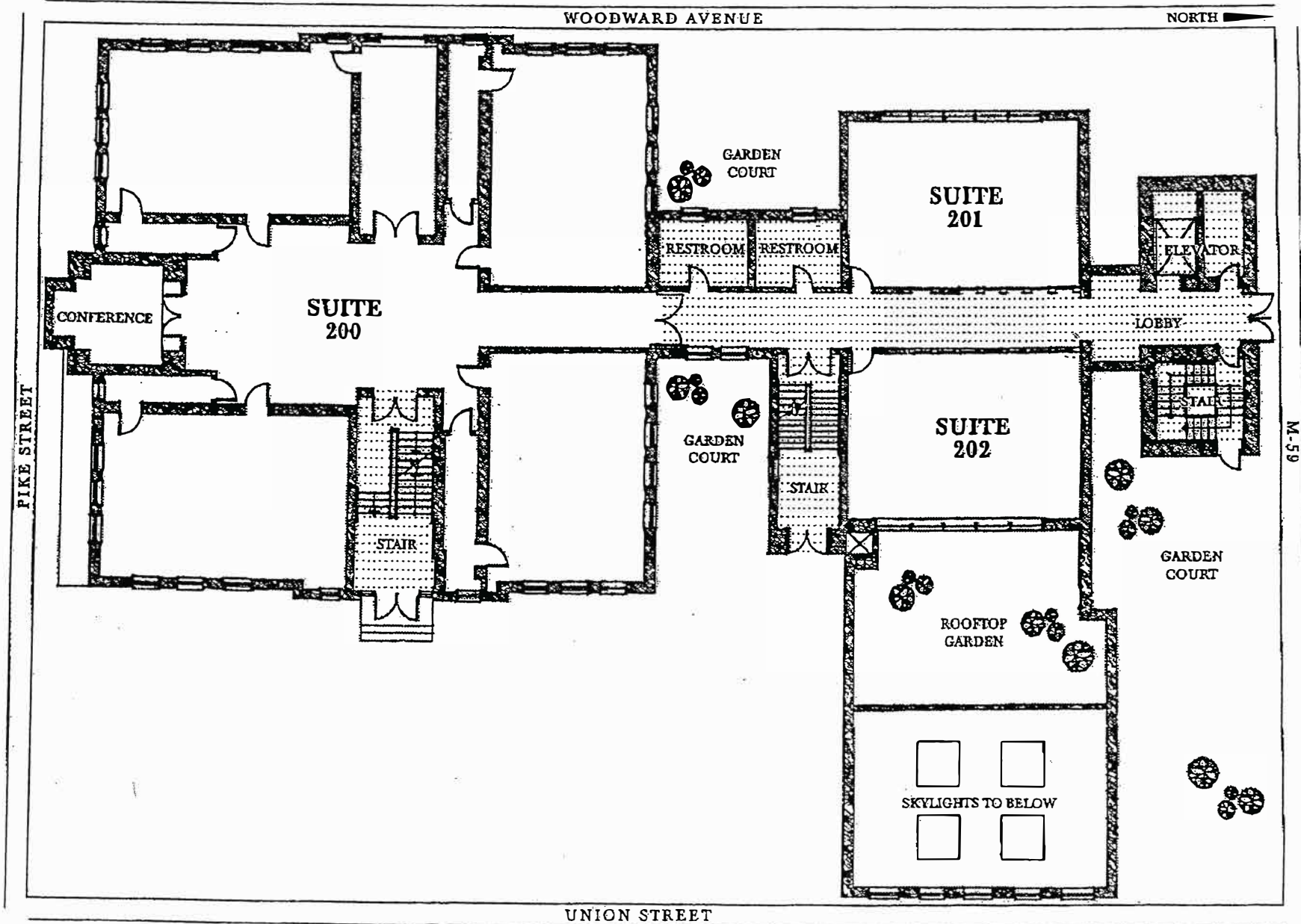
FIRST FLOOR PLAN - PHASE 1 (NOT TO SCALE.)



DOMINION
REAL ESTATE ADVISORS

CENTRAL SCHOOL

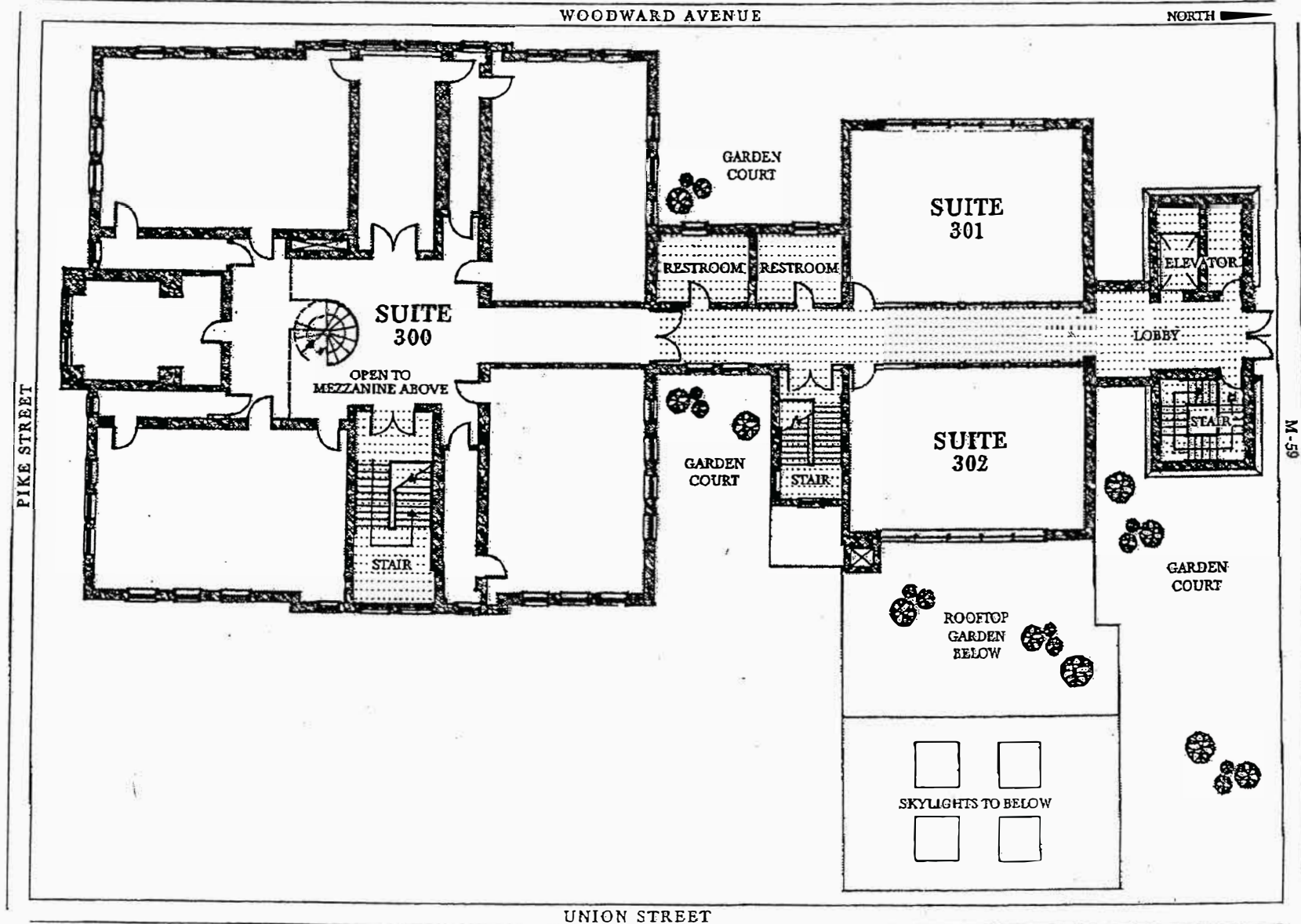
SECOND FLOOR PLAN - PHASE 1 (NOT TO SCALE.)



CENTRAL SCHOOL

Pontiac, MI 48342

THIRD FLOOR PLAN - PHASE 1 (NOT TO SCALE)

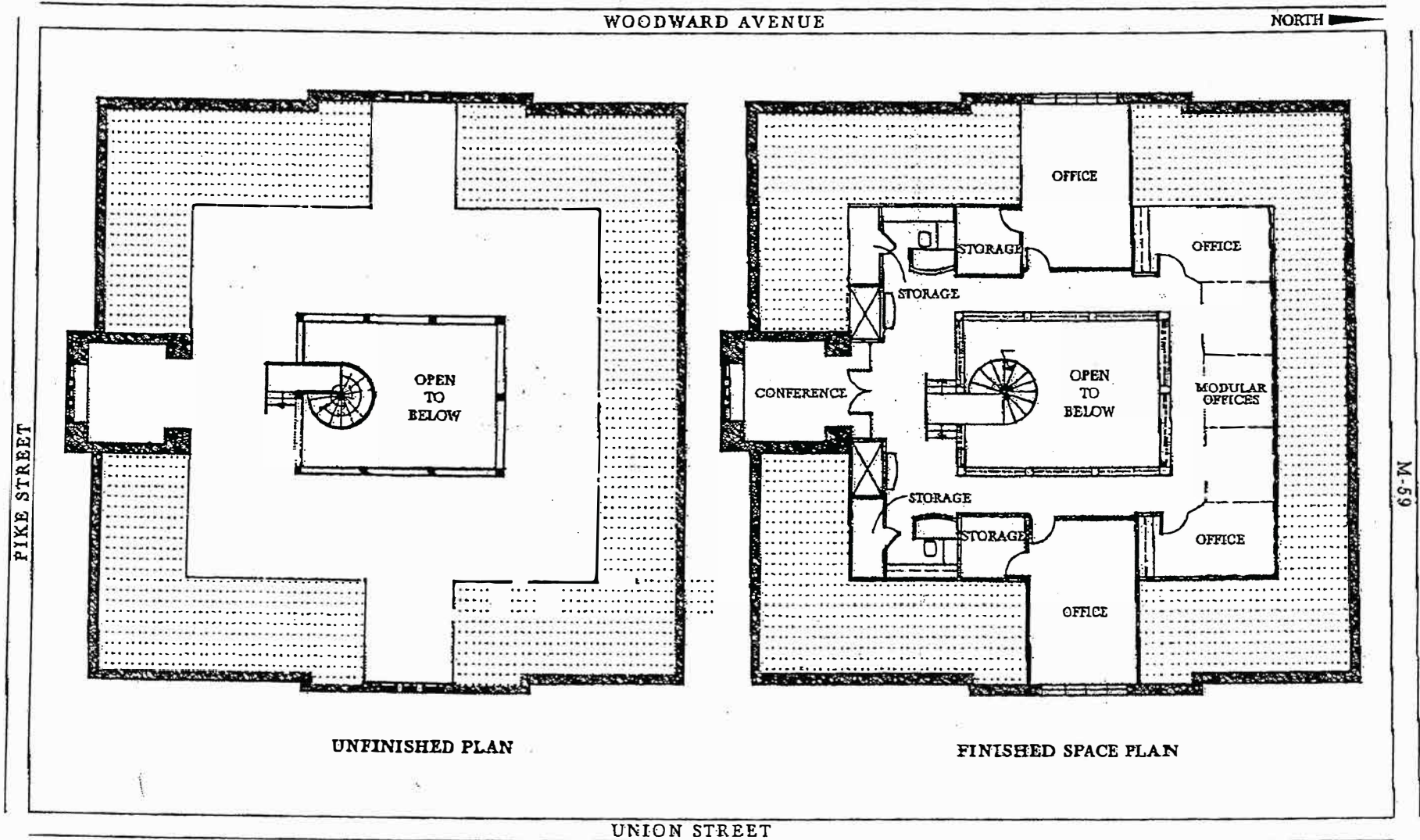


DOMINION
REAL ESTATE ADVISORS

CENTRAL SCHOOL

Pontiac, MI 48342

MEZZANINE - PHASE 1 (NOT TO SCALE)



DOMINION
REAL ESTATE ADVISORS