



OFFICE FOR LEASE 93 Fourth St, Ste C

executive summary



93 Fourth St, Ste C | Suttons Bay, MI 49682

PROPERTY OVERVIEW

Recently remodeled Suttons Bay professional office suite with new flooring. Conveniently located in the Hansen Foods Shopping Plaza close to M-22. Suite features a reception area, four offices, conference room, kitchenette/breakroom, and two ADA restrooms. Direct entrance with signage available above and plenty of parking. Tenant may mark two spaces by entrance for tenant's use. Nearby businesses include Hansen Foods grocery store, Crystal Lake Medical, Independence Bank, Bay Shore Pharmacy and Huntington Bank. Close to Leelanau Trail.

PROPERTY HIGHLIGHTS

- Convenient Location Near M-22
- Great Parking
- Recently Remodeled
- Signage Above Entrance

AVAILABLE SF:

1,192 SF

LEASE RATE:

\$2,251.00 PER MONTH (MG)

YEAR BUILT:

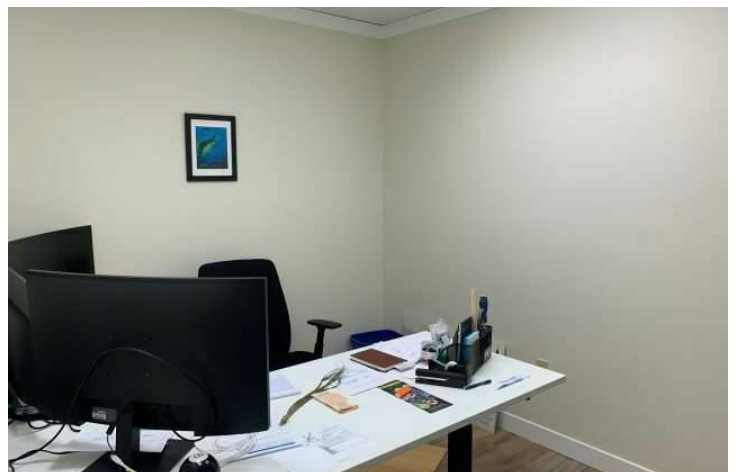
2000

BILL SOMERVILLE | Senior Associate | Commercial Realtor | 231.929.2955 | bsomerville@threewest.com



OFFICE FOR LEASE

93 Fourth St, Ste C



BILL SOMERVILLE // Senior Associate | Commercial Realtor // 231.929.2955 // bsomerville@threewest.com



OFFICE FOR LEASE

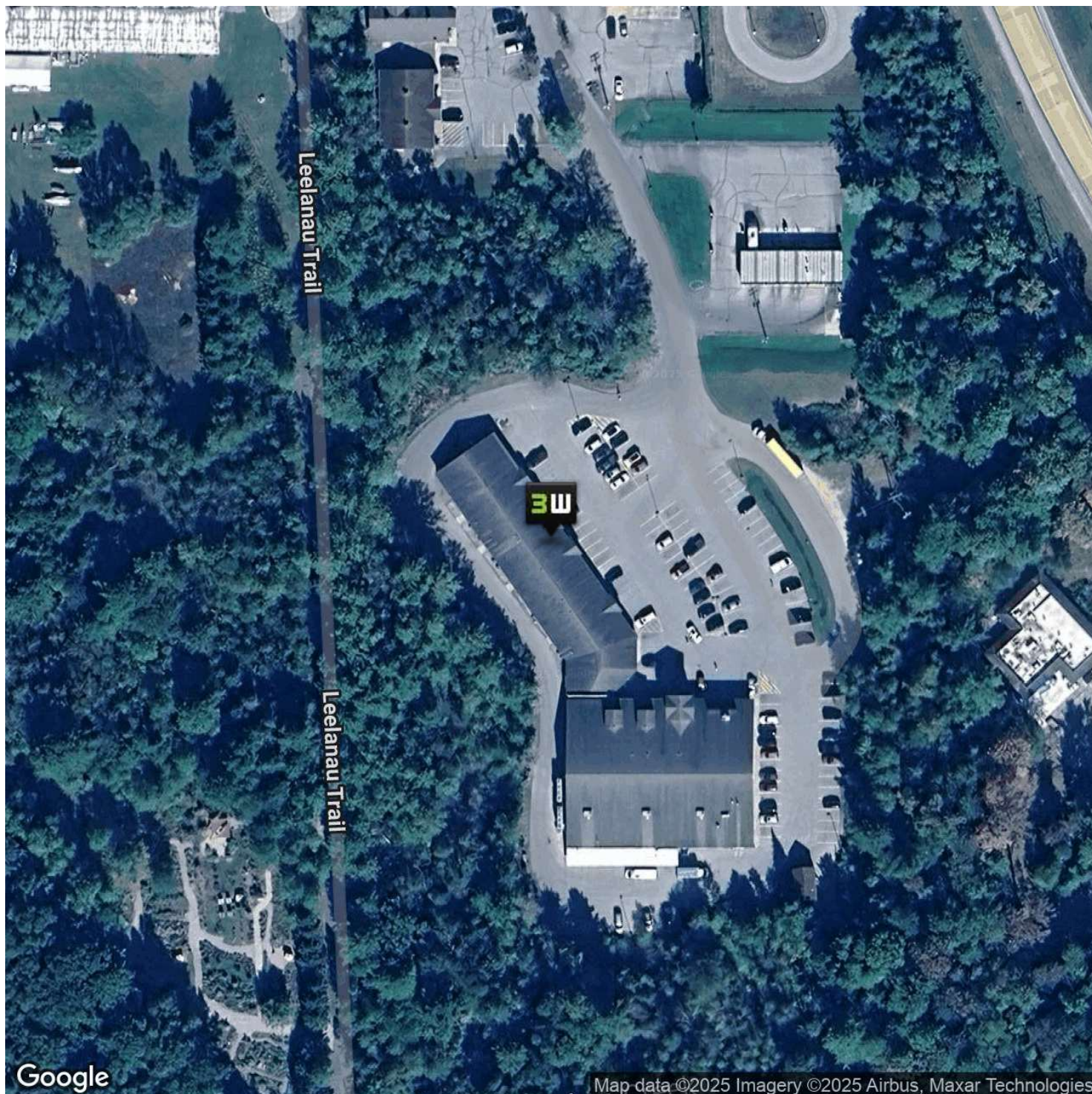
93 Fourth St, Ste C



BILL SOMERVILLE // Senior Associate | Commercial Realtor // 231.929.2955 // bsomerville@threewest.com



OFFICE FOR LEASE
93 Fourth St, Ste C



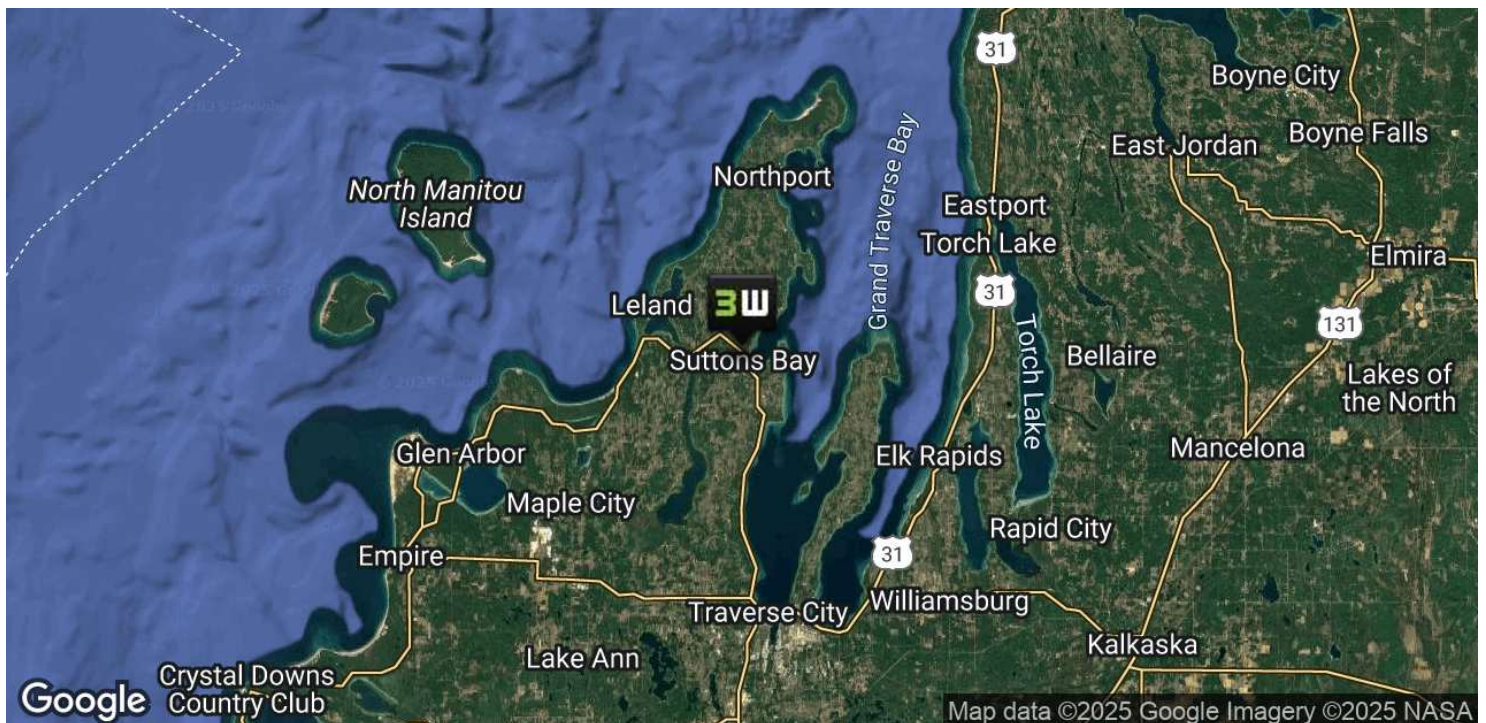
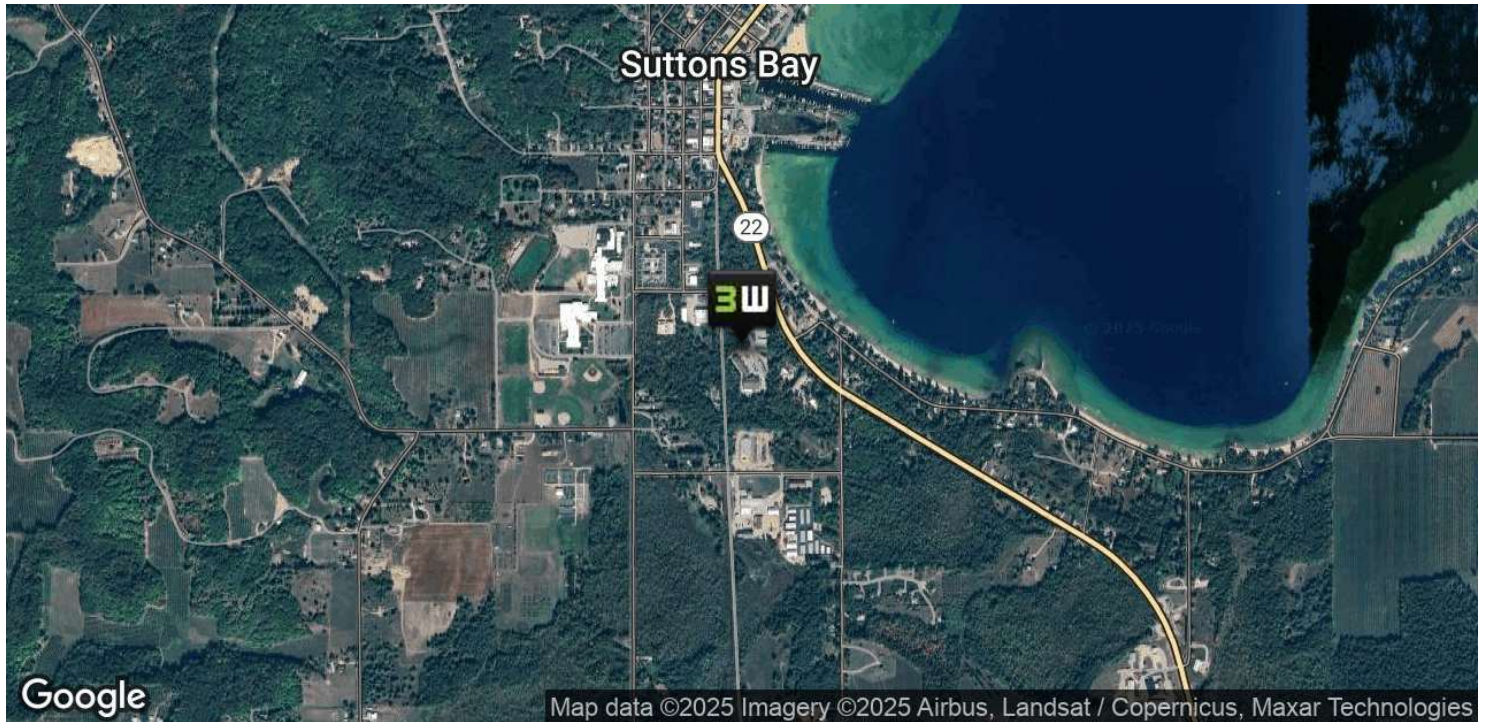
BILL SOMERVILLE // Senior Associate | Commercial Realtor // 231.929.2955 // bsomerville@threewest.com

www.threewest.com

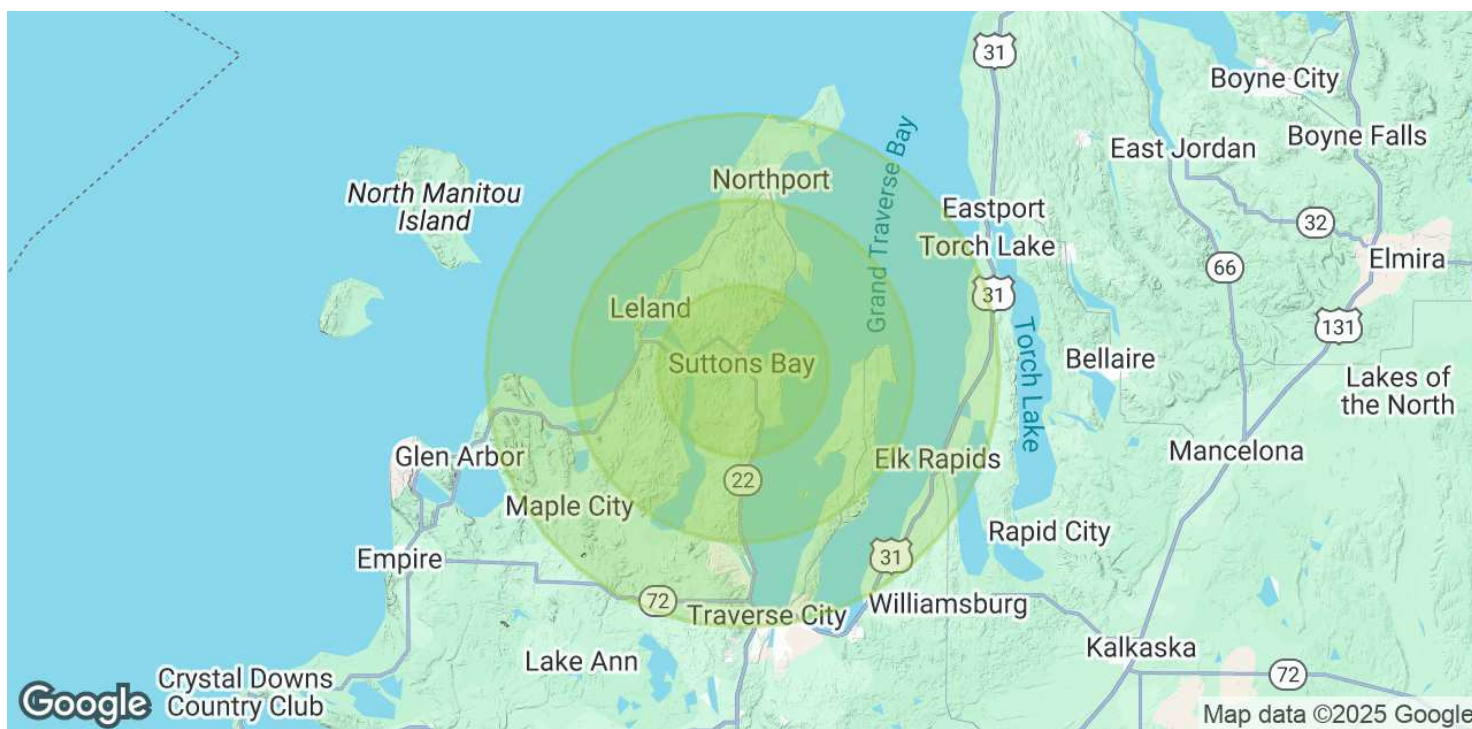
**3W THREE WEST
COMMERCIAL**



OFFICE FOR LEASE
93 Fourth St, Ste C



BILL SOMERVILLE // Senior Associate | Commercial Realtor // 231.929.2955 // bsomerville@threewest.com



POPULATION

5 MILES

10 MILES

15 MILES

Total Population	5,663	14,482	55,992
Average Age	50	50	48
Average Age (Male)	49	50	47
Average Age (Female)	50	50	49

HOUSEHOLDS & INCOME

5 MILES

10 MILES

15 MILES

Total Households	2,399	6,268	25,113
# of Persons per HH	2.4	2.3	2.2
Average HH Income	\$115,861	\$120,313	\$104,400
Average House Value	\$518,619	\$606,239	\$518,154

Demographics data derived from AlphaMap

BILL SOMERVILLE // Senior Associate | Commercial Realtor // 231.929.2955 // bsomerville@threewest.com