

**FEATURED PROPERTY**

# AVAILABLE FOR LEASE

## 3,000 SQ. FT. +/- SOON TO BE FORMER LAKELAND BANK SPACE

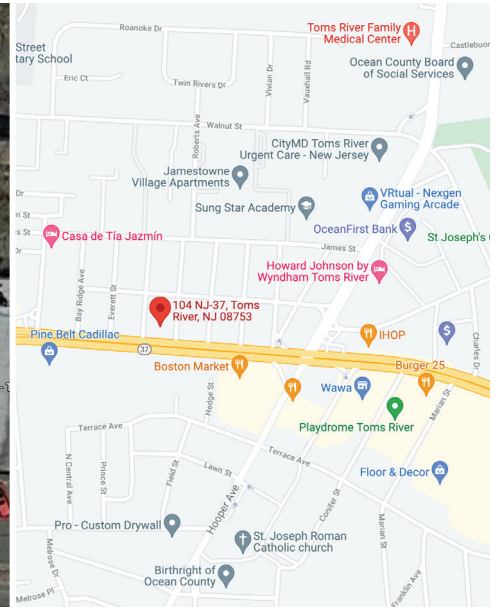
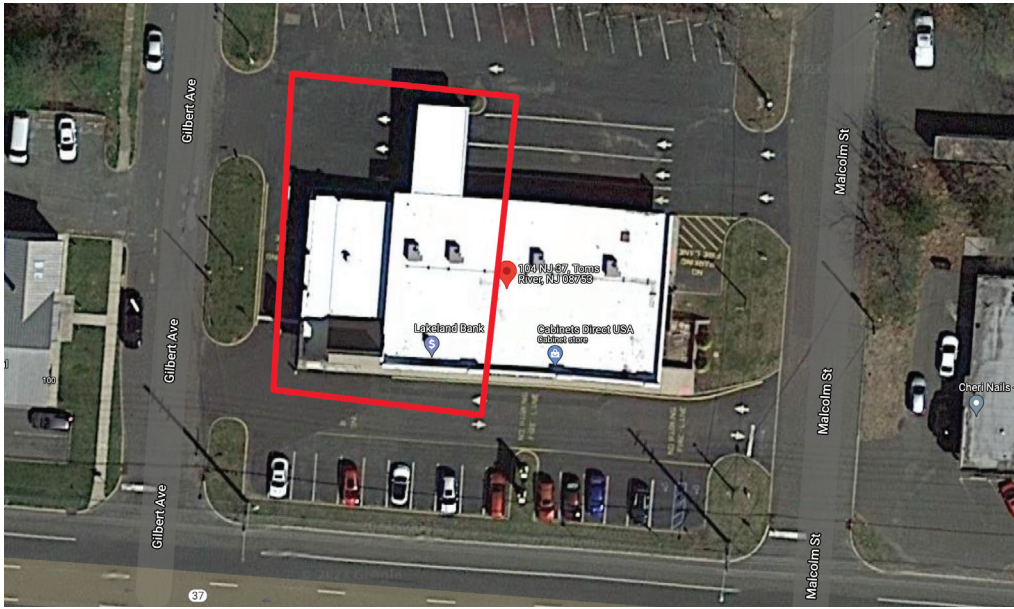
### CORNER END CAP AVAILABLE WITH DRIVE THRU

104 State Route 37 East, Toms River, NJ



**ASKING: \$20.00 PSF, Triple Net**

# 3,000 SQ. FT. +/- SOON TO BE FORMER LAKELAND BANK SPACE AVAILABLE FOR LEASE

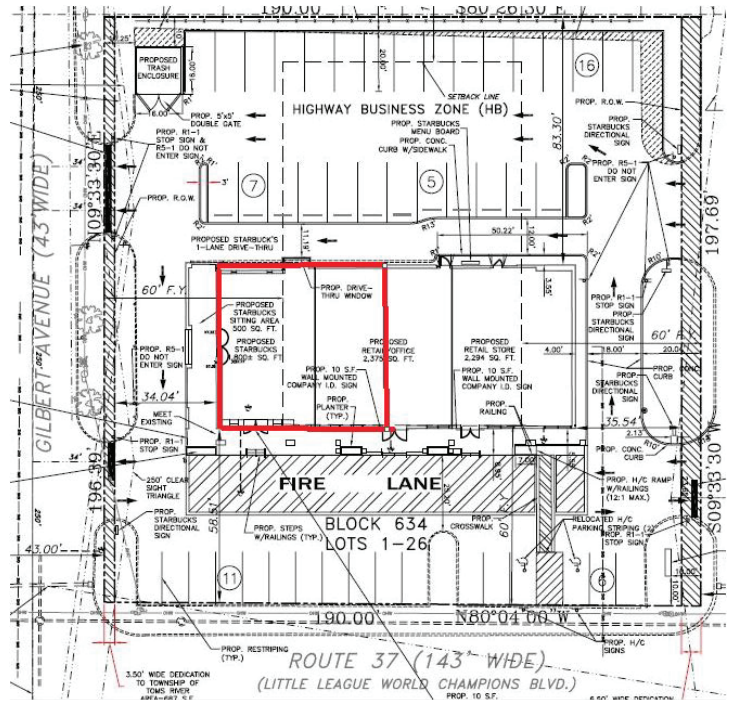


## PROPERTY ADDRESS:

104 NJSH 37 EAST, TOMS RIVER, NJ

	3 Miles	5 Miles	7 Miles
Population	74,378	135,132	217,984
Households	26,844	135,132	217,984
Median HHI	\$62,099	\$55,086	\$50,939
Average HHI	\$74,064	\$69,152	\$66,207

Demographic Data Source: Applied Geographic Solutions (REGIS)



## FEATURES:

- Parking - 45 Spaces
- Traffic Count - 45,000 cars per day
- Available after the first of the year
- Ideal for QSR, Coffee, Bank, Urgent Care, Retail
- Drive Thru Window

