

SMITH | FRYER | WATTS
CO-WORKING OFFICE SPACE AVAILABLE



BACCHUS OFFICE PARK

SHARED OFFICE SPACE FOR LEASE

9110 IRVINE CENTER DRIVE | IRVINE SPECTRUM, CA

CONTACT

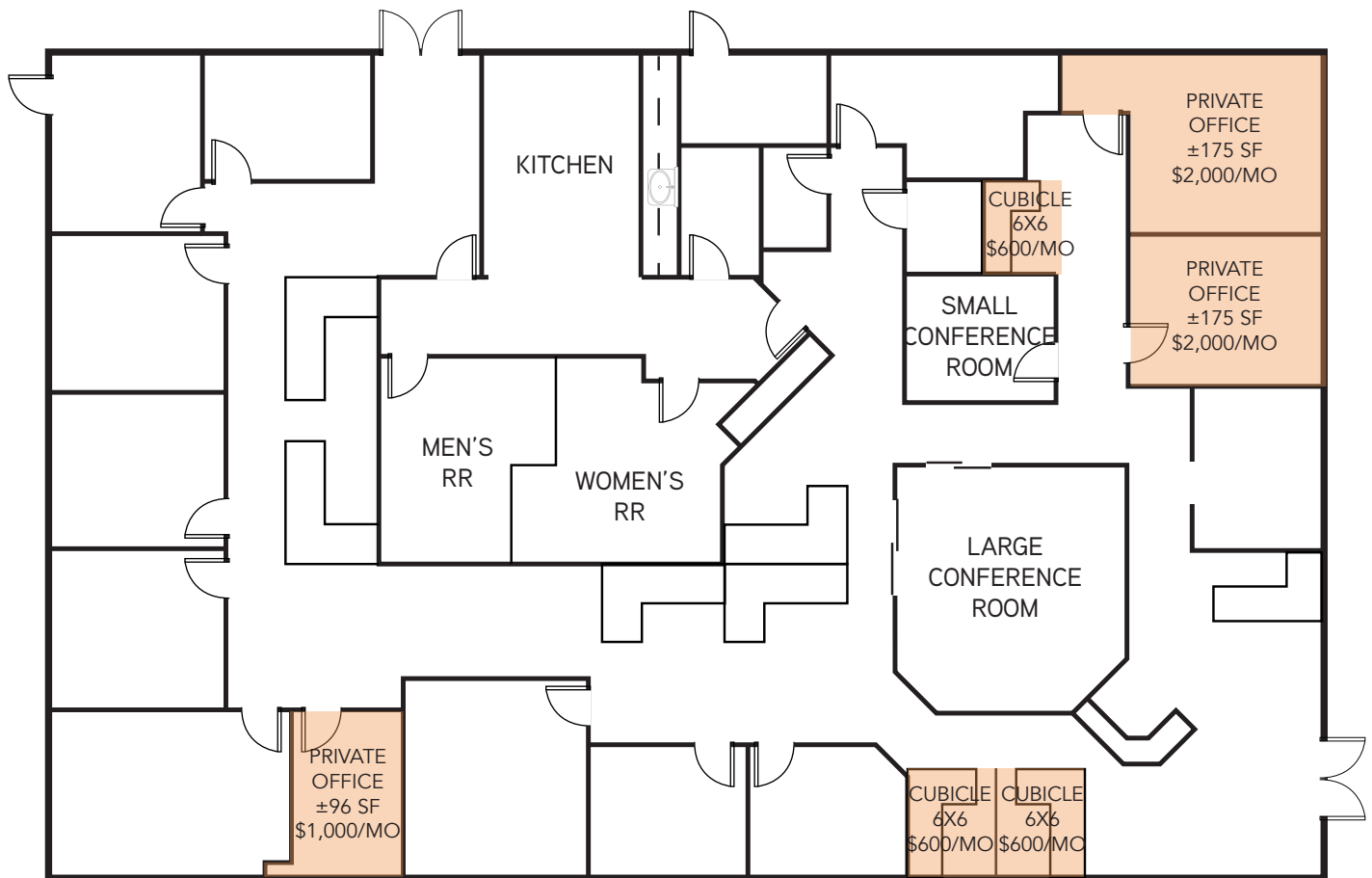
DAVE SMITH
SENIOR VICE PRESIDENT
LICENSE ID# 01195186
949.790.3134
DSMITH@LEEIRVINE.COM

MATT FRYER
SENIOR VICE PRESIDENT
LICENSE ID# 01333079
949.790.3122
MFRYER@LEEIRVINE.COM

TRAVIS WATTS
SENIOR ASSOCIATE
LICENSE ID# 01927498
949.790.3140
TWATTS@LEEIRVINE.COM

PROPERTY FEATURES

- Upscale Professional Co-Working Space
- Single/Multiple Offices and Workstations Available
- Shared Use of Conference Rooms, Reception, Kitchen, Restrooms, Etc.
- Month-to-Month or Longer Term
- Great Location w/ Immediate Access to All Major Freeways & Toll Roads
- Close to the Irvine Spectrum & Los Olivos Marketplace
- Call for Additional Details



PROPERTY IMAGES

9110 ICD | IRVINE SPECTRUM, CA



9110 IRVINE CENTER DRIVE

IRVINE SPECTRUM, CALIFORNIA



9110
IRVINE CENTER DRIVE
IRVINE SPECTRUM, CA



LEE & ASSOCIATES
COMMERCIAL REAL ESTATE SERVICES
SMITH | FRYER | WATTS

DAVE SMITH
SENIOR VICE PRESIDENT
LICENSE ID# 01195186
949.790.3134
DSMITH@LEEIRVINE.COM

MATT FRYER
SENIOR VICE PRESIDENT
LICENSE ID# 01333079
949.790.3122
MFRYER@LEEIRVINE.COM

TRAVIS WATTS
SENIOR ASSOCIATE
LICENSE ID# 01927498
949.790.3140
TWATTS@LEEIRVINE.COM