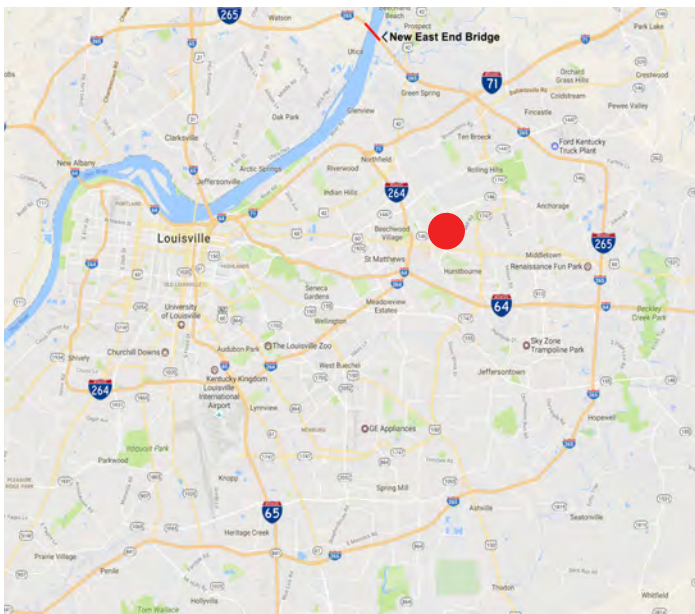


OFFICE SPACE FOR LEASE
PLAZA I AT HURSTBOURNE GREEN
9500 Ormsby Station Road
Louisville, KY 40223

HORIZON
COMMERCIAL REALTY



Highlights

- ~14,000 SF available contiguous on 4th floor
- Divisible to three separate suites
- Class A Office Building in Hurstbourne Green Business Park located in Louisville's prominent east end
- Highly visible from busy Hurstbourne Parkway with building signage available for large users
- Ample parking with 4.5 parking spaces per 1,000 SF
- New conference center that can be reserved by any tenant
- Adjacent to Northeast YMCA and across from the Shoppes at Forest Green

Contact

Mike Dehart
mdehart@hcrky.com

Tim Gramig, CCIM
tgramig@hcrky.com

502.253.1200
ww.hcrky.com

12451 Plantside Drive
Louisville, KY 40299

DISCLAIMER: We obtained the information contained herein from sources we believe to be reliable, but have not verified its accuracy. Accordingly, no warranty or representation, express or implied, is made as to the accuracy of such information, and it is submitted subject to errors, omissions, change of price, rental or other conditions, withdrawal without notice, and to any specific listing conditions imposed by the owners. As always, you are encouraged to conduct your own investigation in conjunction with your tax, legal and other advisors.

OFFICE SPACE FOR LEASE
PLAZA I AT HURSTBOURNE GREEN
9500 Ormsby Station Road
Louisville, KY 40223



Contact

Mike Dehart
mdehart@hcrky.com

Tim Gramig, CCIM
tgramig@hcrky.com

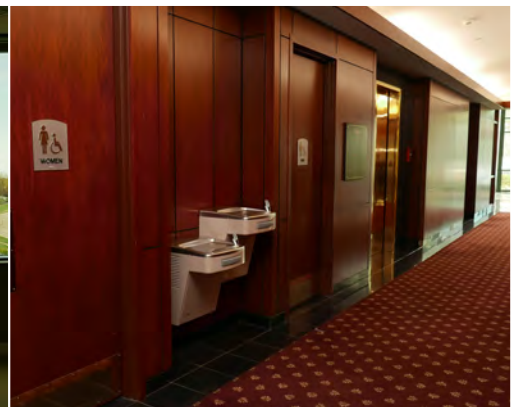
502.253.1200
ww.hcrky.com

12451 Plantside Drive
Louisville, KY 40299

DISCLAIMER: We obtained the information contained herein from sources we believe to be reliable, but have not verified its accuracy. Accordingly, no warranty or representation, express or implied, is made as to the accuracy of such information, and it is submitted subject to errors, omissions, change of price, rental or other conditions, withdrawal without notice, and to any specific listing conditions imposed by the owners. As always, you are encouraged to conduct your own investigation in conjunction with your tax, legal and other advisors.

OFFICE SPACE FOR LEASE
PLAZA I AT HURSTBOURNE GREEN
9500 Ormsby Station Road
Louisville, KY 40223

HORIZON
COMMERCIAL REALTY



Contact

Mike Dehart
mdehart@hcrky.com

Tim Gramig, CCIM
tgramig@hcrky.com

502.253.1200
ww.hcrky.com

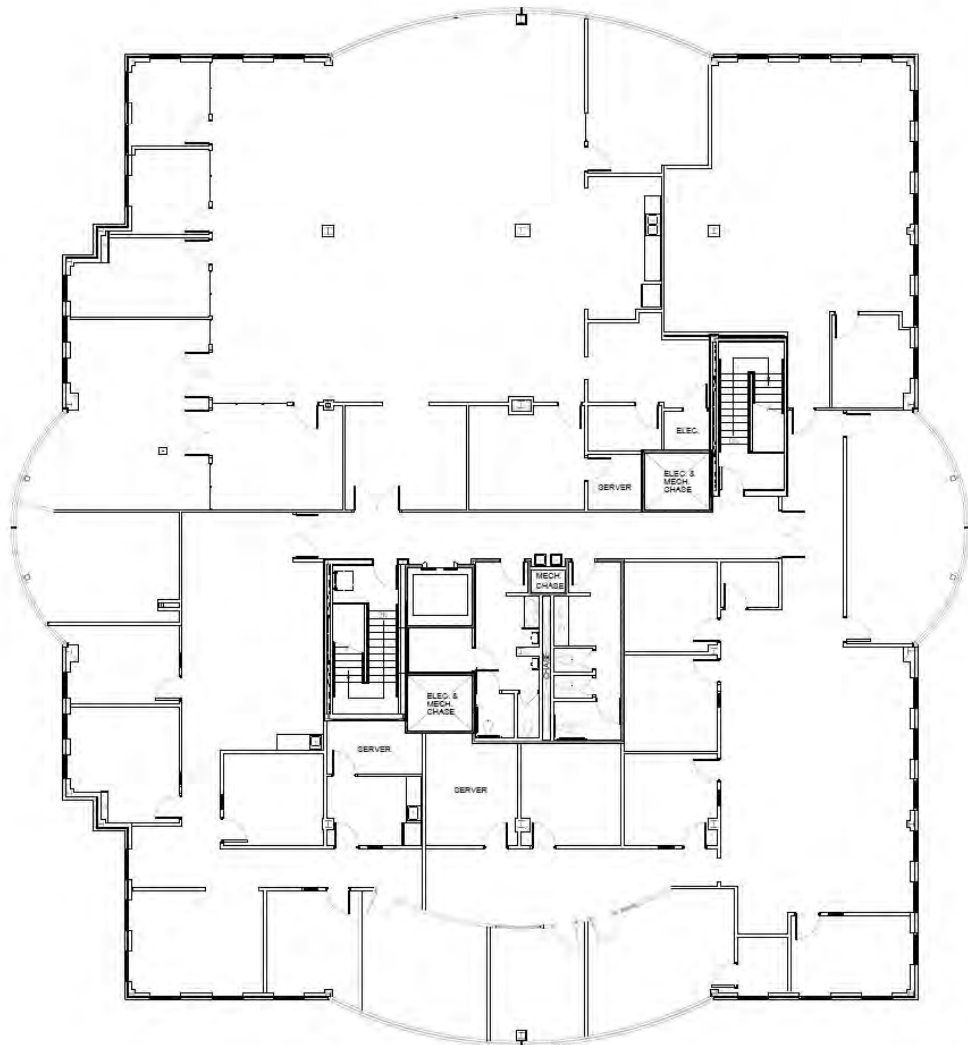
12451 Plantside Drive
Louisville, KY 40299

DISCLAIMER: We obtained the information contained herein from sources we believe to be reliable, but have not verified its accuracy. Accordingly, no warranty or representation, express or implied, is made as to the accuracy of such information, and it is submitted subject to errors, omissions, change of price, rental or other conditions, withdrawal without notice, and to any specific listing conditions imposed by the owners. As always, you are encouraged to conduct your own investigation in conjunction with your tax, legal and other advisors.

OFFICE SPACE FOR LEASE
PLAZA I AT HURSTBOURNE GREEN
9500 Ormsby Station Road
Louisville, KY 40223



Floor Plan-Fourth Floor



PLAZA 1 - FOURTH FLOOR

Contact

Mike Dehart
mdehart@hcrky.com

Tim Gramig, CCIM
tgramig@hcrky.com

502.253.1200
ww.hcrky.com

12451 Plantside Drive
Louisville, KY 40299

DISCLAIMER: We obtained the information contained herein from sources we believe to be reliable, but have not verified its accuracy. Accordingly, no warranty or representation, express or implied, is made as to the accuracy of such information, and it is submitted subject to errors, omissions, change of price, rental or other conditions, withdrawal without notice, and to any specific listing conditions imposed by the owners. As always, you are encouraged to conduct your own investigation in conjunction with your tax, legal and other advisors.