

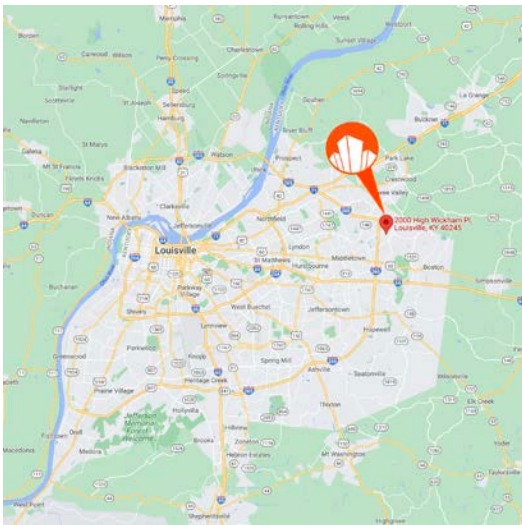


AVAILABLE

2101 HIGH WICKHAM PL | LOUISVILLE, KY 40245

CLASS A OFFICE PARK
FOR SALE: \$8,500,000
LEASE RATE: \$26/SF FULL SERVICE
33,059 SF±

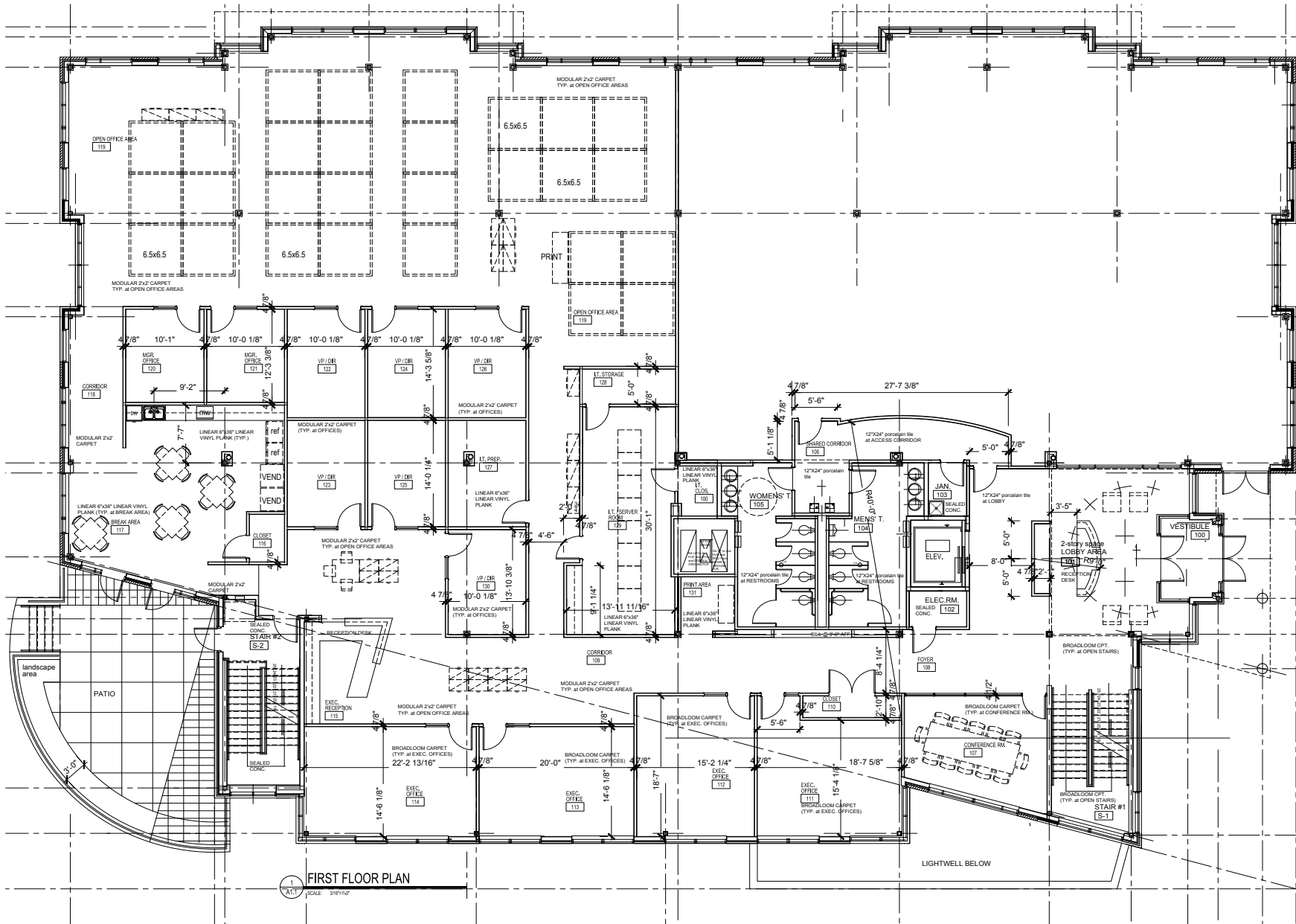
- Old Henry Crossings Building 5
- 5:1 parking ratio
- Building generator is a Generac with 400kw capacity
- Join Cerity, Semonin, Guidance Capital and Schulte Hospitality
- Easy access to I-265
- Open floor plate with lots of glass, and a good mix of open area, offices, conference rooms and a two story lobby
- Close to Publix, Mercedes Benz and Harley Davidson
- Built in 2017



JUSTIN BAKER, SIOR
502 454 0911
JBAKER@TRIOCPG.COM

NANCY DUPPS, SIOR
502 454 4929
NDUPPS@TRIOCPG.COM

1ST FLOOR PLAN - 14,501 SF



JOB NUMBER:
TIBIDI+
 Tucker Booker Donhoff + Partners
 716 East Walnut Street | Louisville, Kentucky 40202
 Phone: 502.582.2222
 Email: info@tiberidion.com

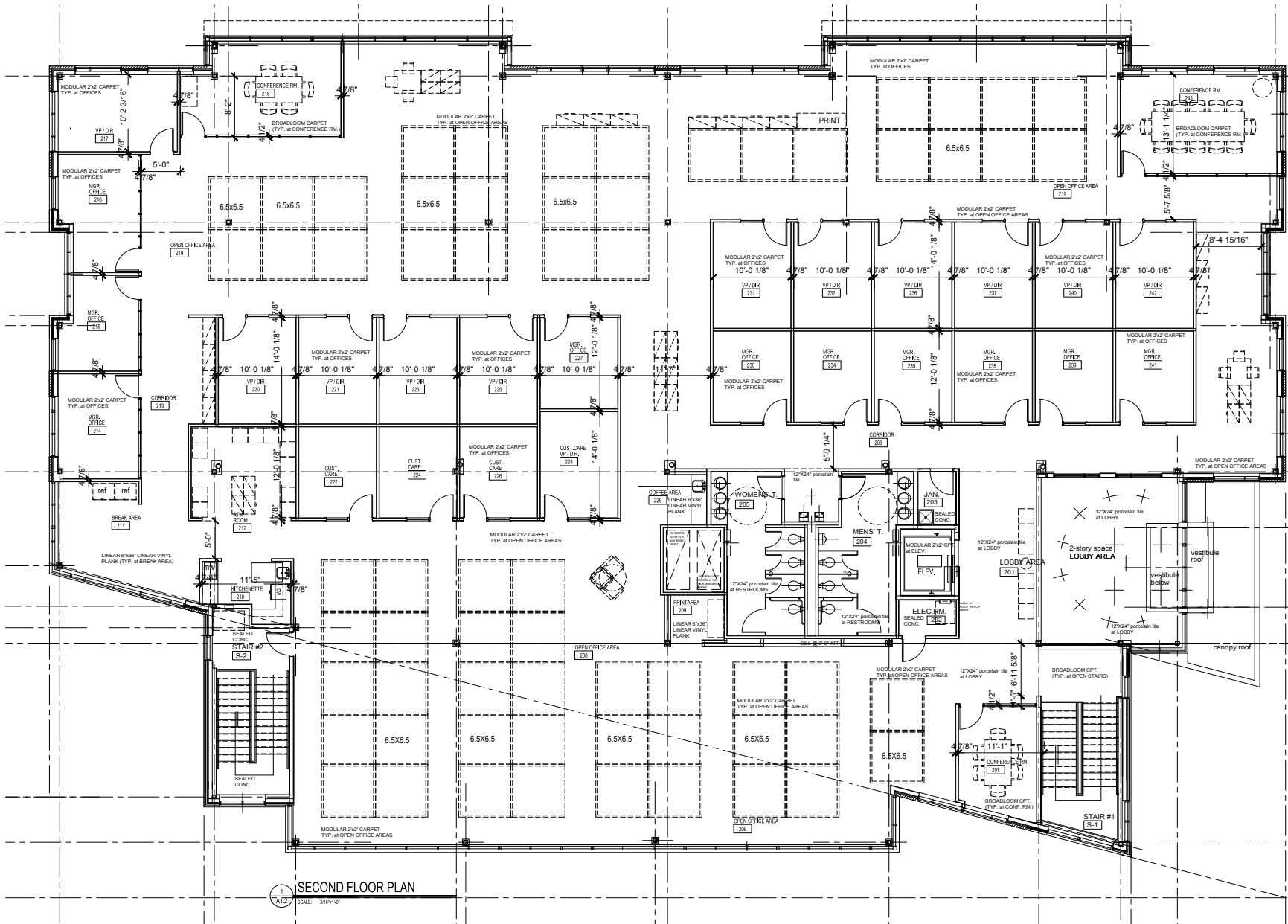
PROJECT TITLE:
PAYMENT ALLIANCE OFFICE SUITE
 in HIGH WICKHAM PLACE - BLDG. #5
 SCHULTE HOSPITALITY

DATE: 12-10-2016
 BY: JTM/cd
 CDD: TEK
 REVISIONS:

A-1.1



2ND FLOOR PLAN - 14,134 SF



SECOND FLOOR PLAN
SCALE: 3/8"=1'-0"

JOB NUMBER:
TIBIDI+
Tucker Booker Donhoff + Partners
716 East Howard Street | Louisville, Kentucky 40202
PH: 502.582.1234
WWW.TIBIDI.COM

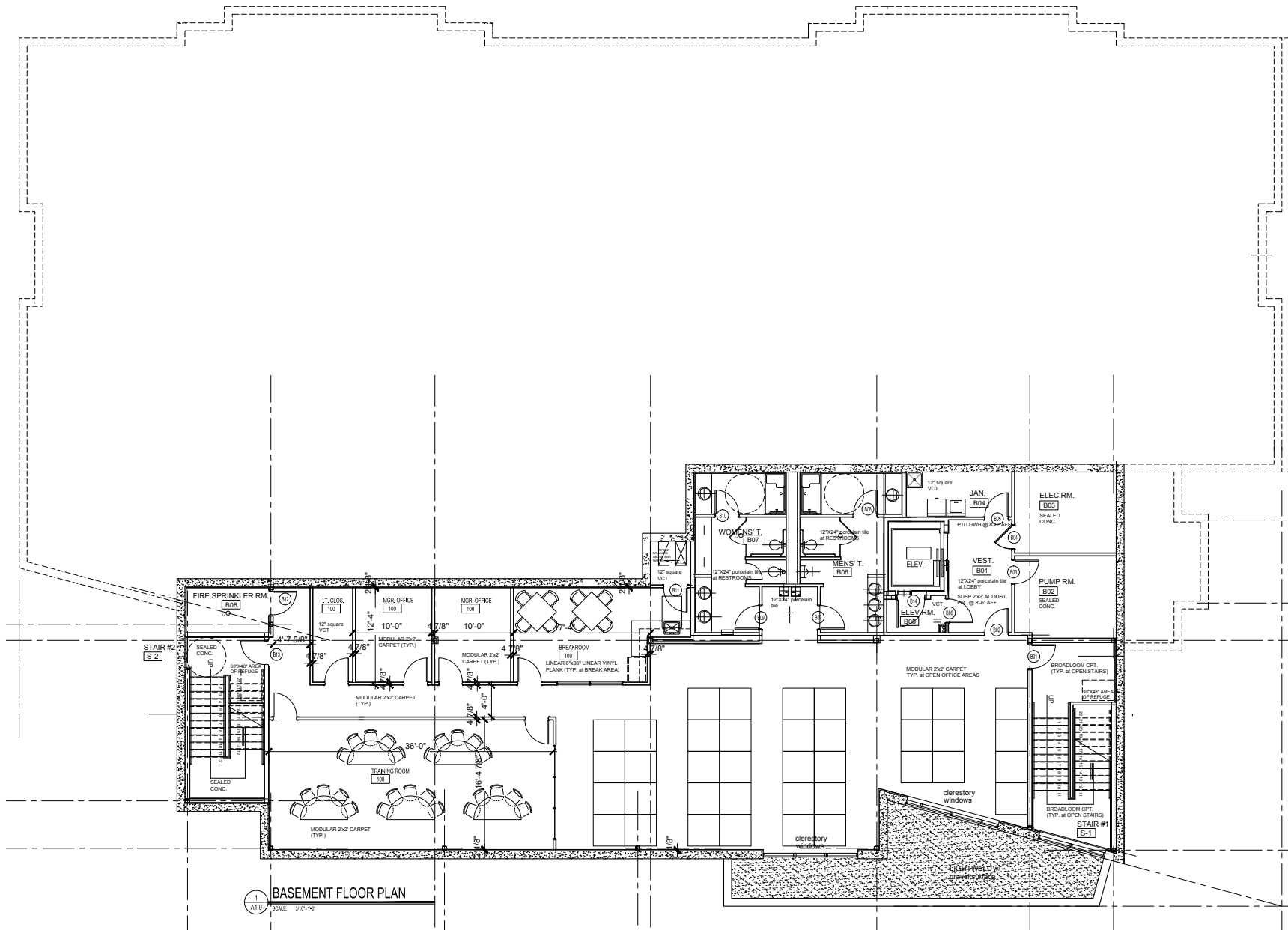
PROJECT TITLE:
**PAYMENT ALLIANCE OFFICE SUITE
in HIGH WICKHAM PLACE - BLDG. #5**
SCHULTE HOSPITALITY

DATE: 12-10-2016
BY: JTM:CD
CHK: TEK
REVISIONS:

A-1.2



LOWER LEVEL FLOOR PLAN - 4,424 SF



1
A1.0 **BASEMENT FLOOR PLAN**
SCALE: 3/16"=1'-0"

T|B|D|+
Tucker, Booker, Donoff + Partners
716 East Market Street | Louisville, Kentucky 40202
P: (502) 462-7432 | F: (502) 452-8888
email: info@tbd.com

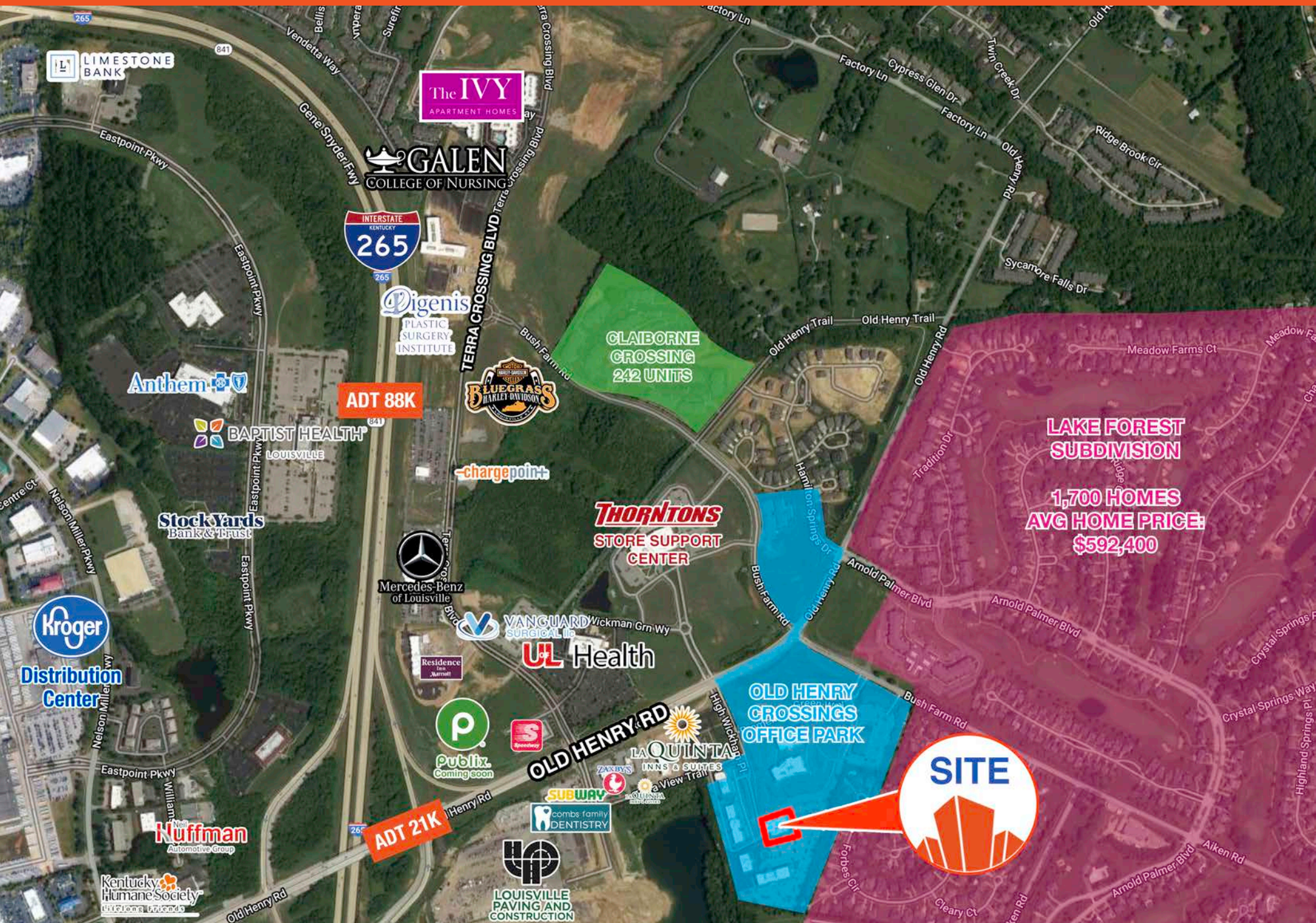
PROJECT TITLE:
PAYMENT ALLIANCE OFFICE SUITE
in HIGH WICKHAM PLACE - BLDG. #5
SCHULTE HOSPITALITY

DATE: 11-30-2016
BY: JTM/cd
CHK: TEK
REVISIONS:

A-1.0



AERIAL



PHOTOS



OPEN WORKSPACE



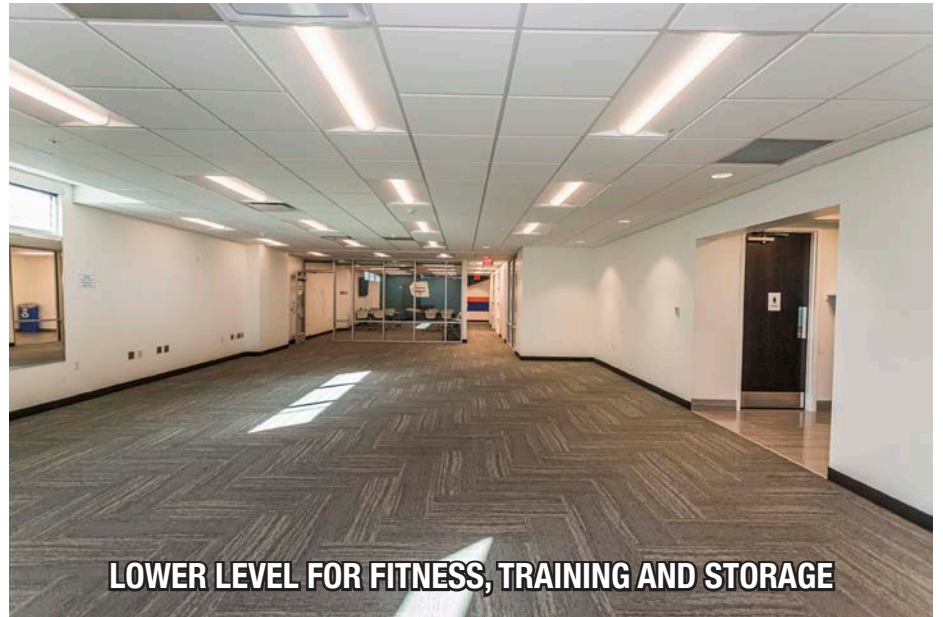
ABUNDANT NATURAL LIGHT



BREAK AREA WITH OUTDOOR SEATING



PHOTOS



SITE PLAN

