

FOR LEASE

WHIPPLE COMMERCE CENTER

Whipple Road
Union City, CA



Address	Size	Office SF	DH/GL Loading	Date Available	Comment
2953 Whipple Rd	±6,240	±1,200	2 / 1	July 1, 2018	Corner Location, High Visibility
30120 Ahern Ave	±25,200	±2,000	5 / 1*	Sept 1, 2018	22' - 24' Clear Height *Grade Level Ramp

Price TBD



BUILDING FEATURES

- + High Visibility
- + Retail-Like Visibility
- + Sprinklers
- + Excellent I-880 Freeway Access
- + 1.5/1,000 Parking
- + Front Loading



CONTACT US

ROBERT FERRARO, SIOR

Senior Vice President
+1 510 874 1910
bob.ferraro@cbre.com
Lic. 00949584

KENNETH MORRIS

First Vice President
+1 510 874 1983
ken.morris@cbre.com
Lic. 01312918

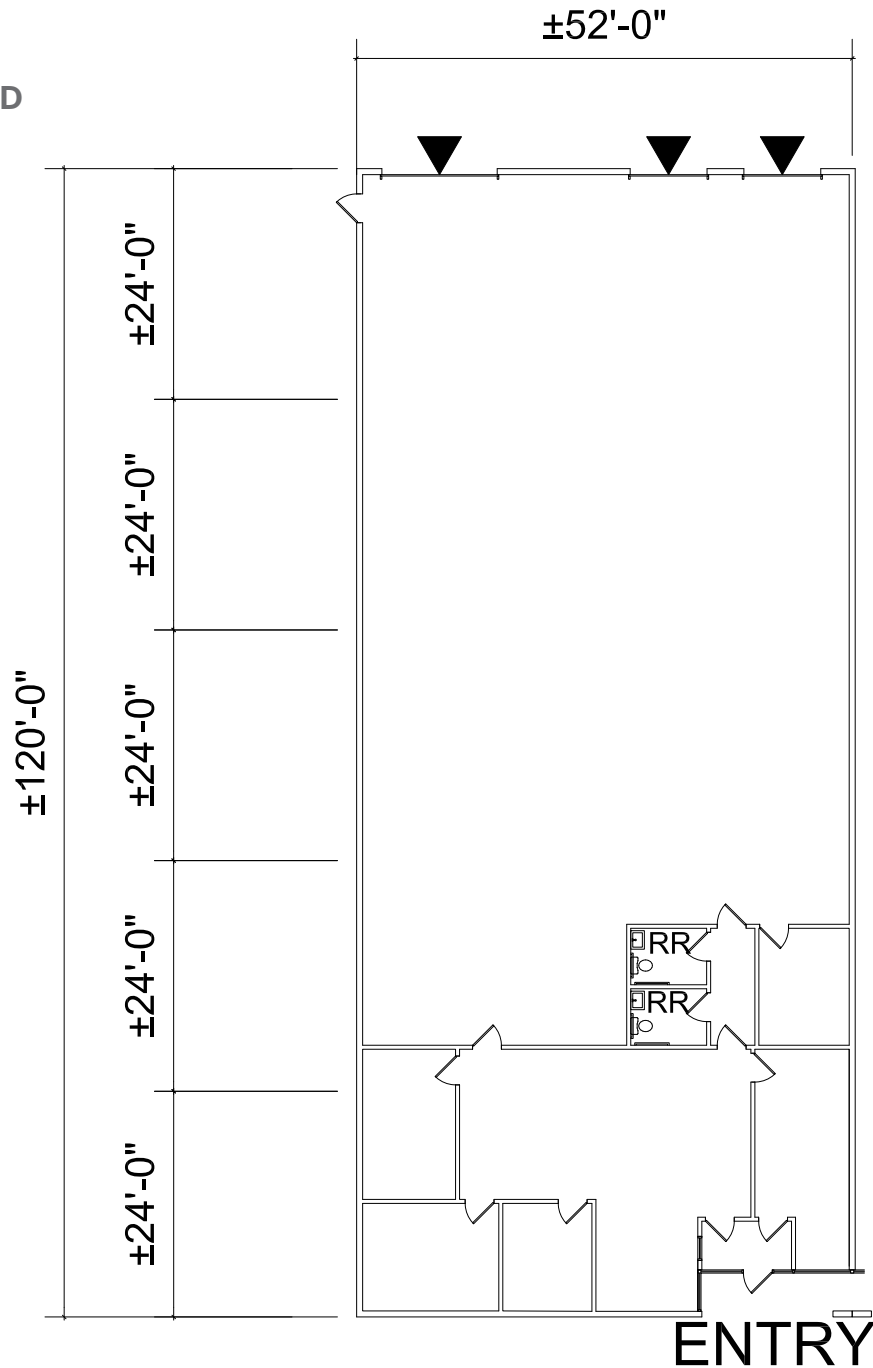
www.cbre.com

CBRE

FOR LEASE WHIPPLE COMMERCE CENTER

Union City, CA

2953 WHIPPLE RD
±6,240 SF



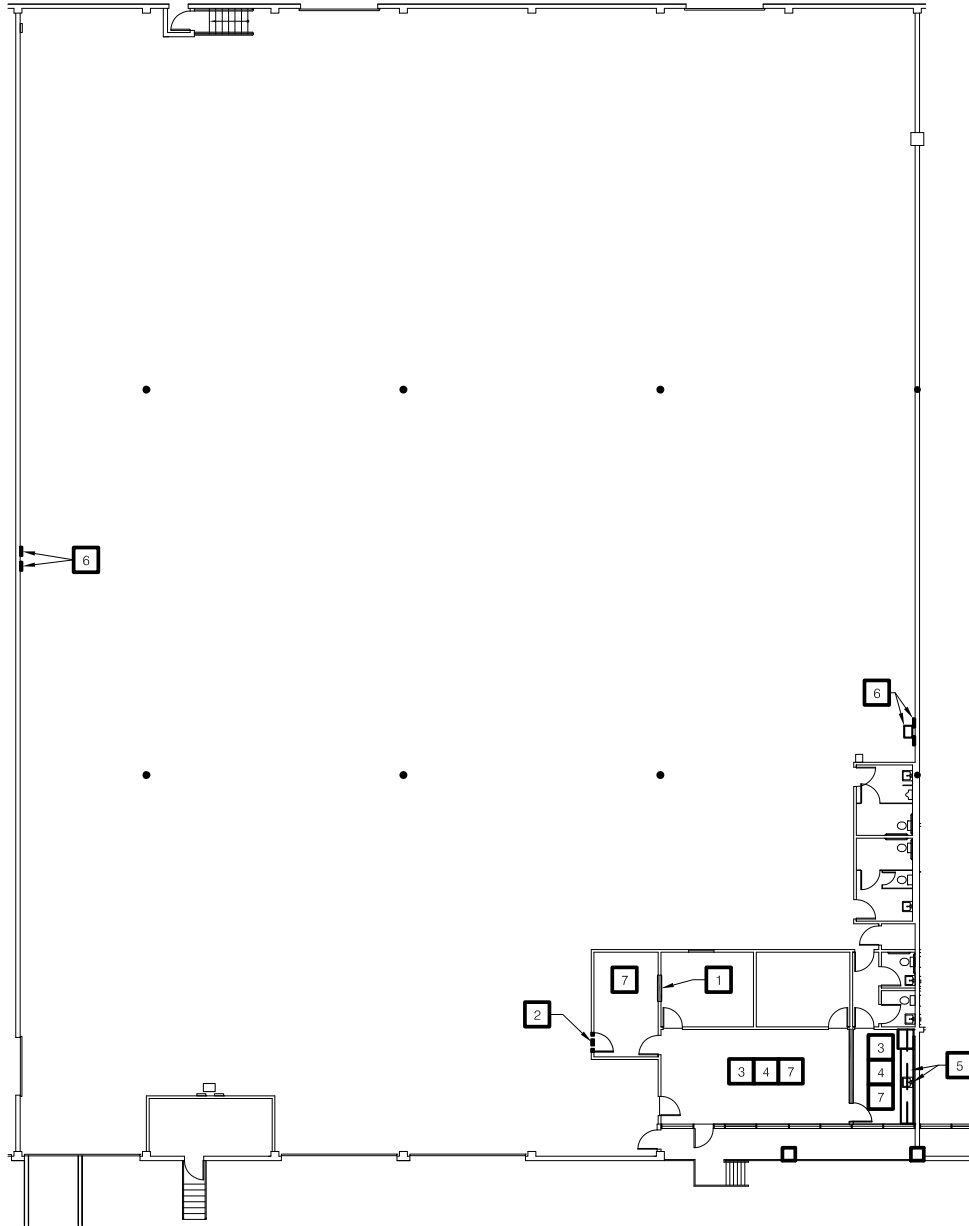
© 2018 CBRE, Inc. This information has been obtained from sources believed reliable. We have not verified it and make no guarantee, warranty or representation about it. Any projections, opinions, assumptions or estimates used are for example only and do not represent the current or future performance of the property. You and your advisors should conduct a careful, independent investigation of the property to determine to your satisfaction the suitability of the property for your needs. Photos herein are the property of their respective owners and use of these images without the express written consent of the owner is prohibited. CBRE and the CBRE logo are service marks of CBRE, Inc. and/or its affiliated or related companies in the United States and other countries. All other marks displayed on this document are the property of their respective owners.

FOR LEASE WHIPPLE COMMERCE CENTER

Union City, CA

30120 AHERN AVE

±25,200 SF



© 2018 CBRE, Inc. This information has been obtained from sources believed reliable. We have not verified it and make no guarantee, warranty or representation about it. Any projections, opinions, assumptions or estimates used are for example only and do not represent the current or future performance of the property. You and your advisors should conduct a careful, independent investigation of the property to determine to your satisfaction the suitability of the property for your needs. Photos herein are the property of their respective owners and use of these images without the express written consent of the owner is prohibited. CBRE and the CBRE logo are service marks of CBRE, Inc. and/or its affiliated or related companies in the United States and other countries. All other marks displayed on this document are the property of their respective owners.

www.cbre.com

CBRE