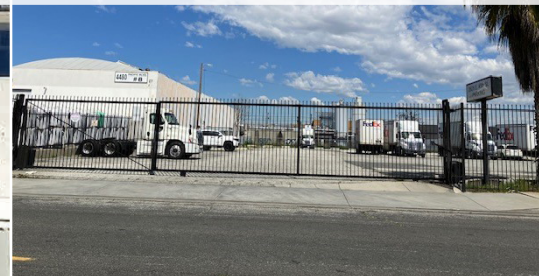


INDUSTRIAL LAND FOR

# LEASE

**Major Price Reduction!**



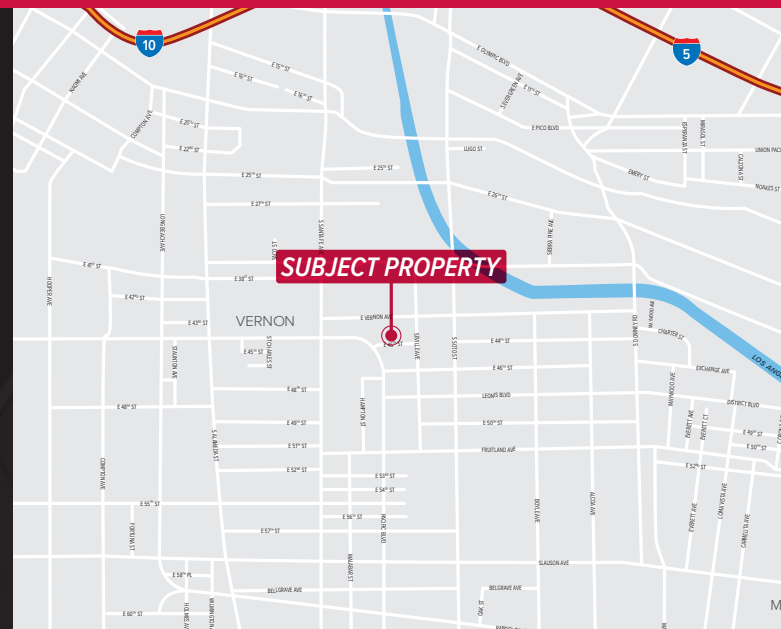
**2640 E 45<sup>th</sup> St, Vernon, CA 90058**  
**±77,952 SF of Industrial Land**

## PROPERTY HIGHLIGHTS

- ±77,952 SF of Land for Lease
- Great Vernon Location
- Fully Fenced & Paved with Lights
- Short or Long Term Lease

## PRICING SUMMARY

- **LEASE RATE: \$40,535/Mo GRS**  
**(\$0.52 PSF/Mo)**



**Peter D. Bacci**

SIOR | Executive VP, Principal | LIC NO 00946253

[pbacci@lee-associates.com](mailto:pbacci@lee-associates.com)

323.767.2022

**David Brandt**

Executive VP & Partner | LIC NO 00999100

[dbrandt@lee-associates.com](mailto:dbrandt@lee-associates.com)

323.767.2104

**Jake Poxon**

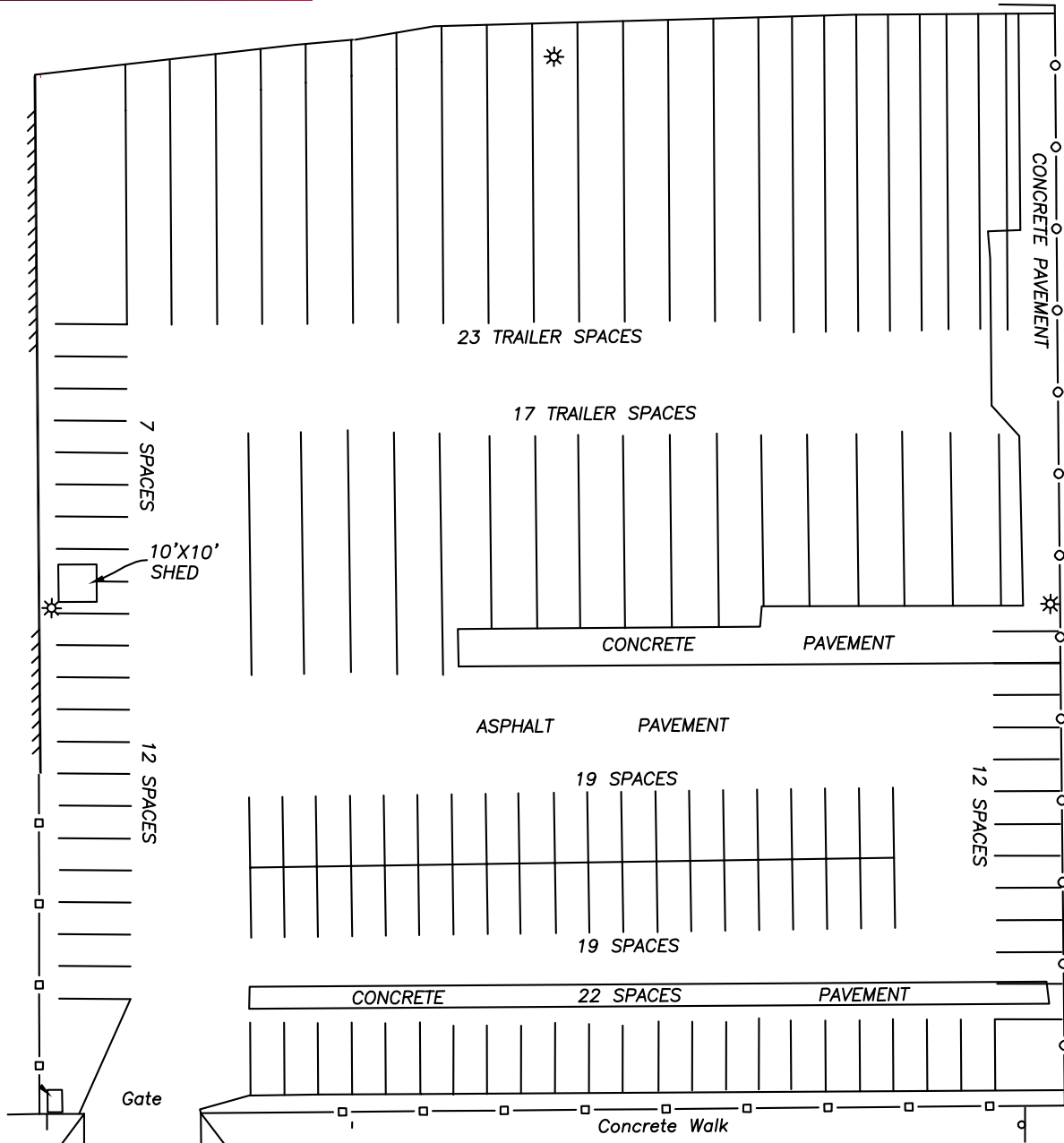
Executive VP & Principal | LIC NO 01968984

[jpoxon@lee-associates.com](mailto:jpoxon@lee-associates.com)

323.767.2055

# INDUSTRIAL LAND FOR LEASE

## PROPERTY SITE PLAN



**E 45TH ST**



NOTE: Drawing not to scale. All measurements and sizes are approximate.

**2640 E 45th St, Vernon, CA 90058**  
**±77,952 SF of Industrial Land**

**Peter D. Bacci**  
SIOR | Executive VP, Principal | LIC NO 00946253  
pbacci@lee-associates.com  
323.767.2022

**David Brandt**  
Executive VP & Partner | LIC NO 00999100  
dbrandt@lee-associates.com  
323.767.2104

**Jake Poxon**  
Executive VP & Principal | LIC NO 01968984  
jpoxon@lee-associates.com  
323.767.2055