



COMMERCIAL REAL ESTATE

INDUSTRIAL PROPERTY FOR SALE



4770 Shelfer Rd
Tallahassee, FL 32305

TREY DESANTIS
Partner/Sales Associate
850.766.6868
treyl@tlgproperty.com

TLG REAL ESTATE SERVICES
3520 Thomasville Road, Suite 200
Tallahassee, FL 32309
O: 850.385.6363



EXECUTIVE SUMMARY
4770 SHELFER RD
 TALLAHASSEE, FL 32305



OFFERING SUMMARY

Sale Price:	\$395,000
Price / SF:	\$129.25
Lot Size:	0.58 Acres
Year Built:	2009
Building Size:	3,056 SF
Zoning:	M-1
APN:	4124204940070

[Click Here for Zoning Information](#)

PROPERTY OVERVIEW

3,056 SF building on 0.58 AC.

1,000 SF of Office Space:
 - large lobby with work station
 - three offices
 - two bathrooms. one shower,
 - kitchenette

2,056 SF of Conditioned Warehouse Space:
 - two 14 ft roll-up doors, one 16 ft wide and one 12 ft wide
 - three phase power, two panels
 - secure yard space with 6 ft fence, three strand barbed wire, and entry gate

LOCATION OVERVIEW

Located off Shelfer Rd just north of the Crossway Rd intersection, this warehouse is situated in a very populated industrial district. This area primarily consists of warehouse and manufacturing services with a mix of residential.

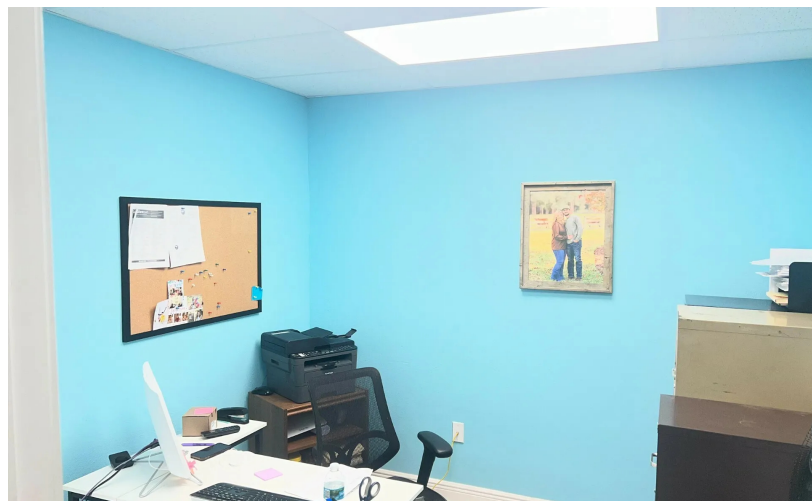
Trey DeSantis
 850.766.6868
 trey@tlgproperty.com

TLG REAL ESTATE SERVICES
 3520 Thomasville Road, Suite 200, Tallahassee, FL 32309
 850.385.6363





ADDITIONAL PHOTOS
4770 SHELFER RD
TALLAHASSEE, FL 32305



Trey DeSantis
850.766.6868
trey@tlgproperty.com

TLG REAL ESTATE SERVICES
3520 Thomasville Road, Suite 200, Tallahassee, FL 32309
850.385.6363





ADDITIONAL PHOTOS
4770 SHELFER RD
TALLAHASSEE, FL 32305



Trey DeSantis
850.766.6868
trey@tlgproperty.com

TLG REAL ESTATE SERVICES
3520 Thomasville Road, Suite 200, Tallahassee, FL 32309
850.385.6363





RETAILER MAP
4770 SHELFER RD
TALLAHASSEE, FL 32305



Map data ©2026 Imagery ©2026 Airbus, Maxar Technologies, Vexcel Imaging US, Inc.

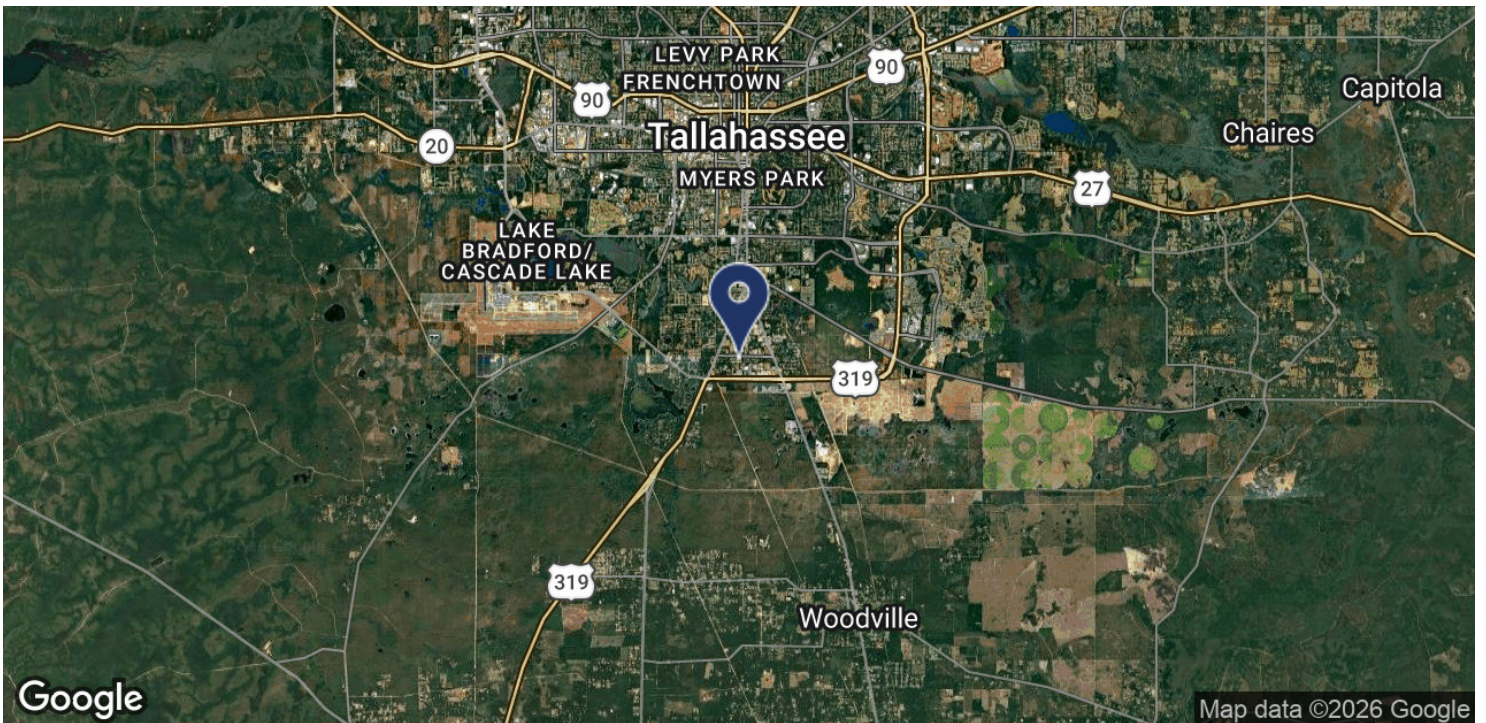
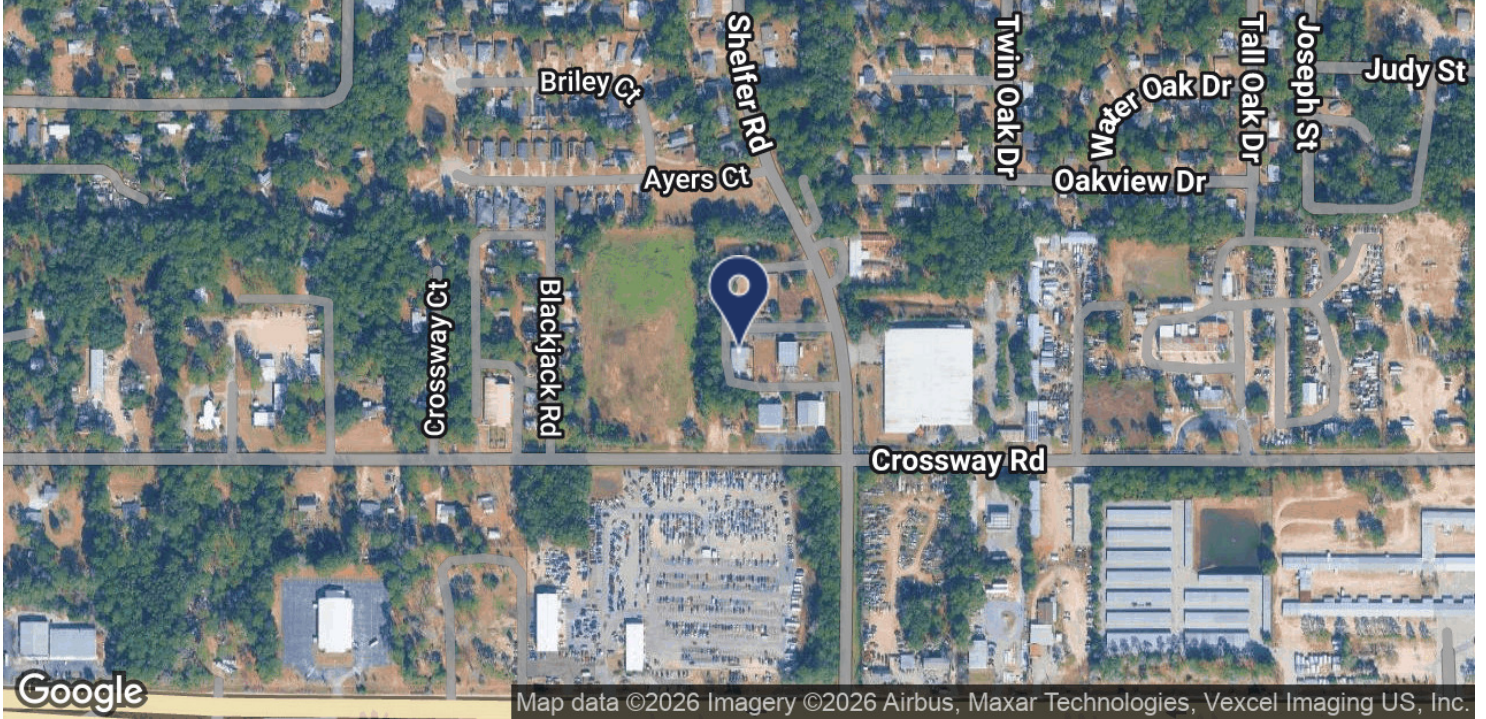
Trey DeSantis
850.766.6868
trey@tlgproperty.com

TLG REAL ESTATE SERVICES
3520 Thomasville Road, Suite 200, Tallahassee, FL 32309
850.385.6363





LOCATION MAP
4770 SHELFER RD
TALLAHASSEE, FL 32305



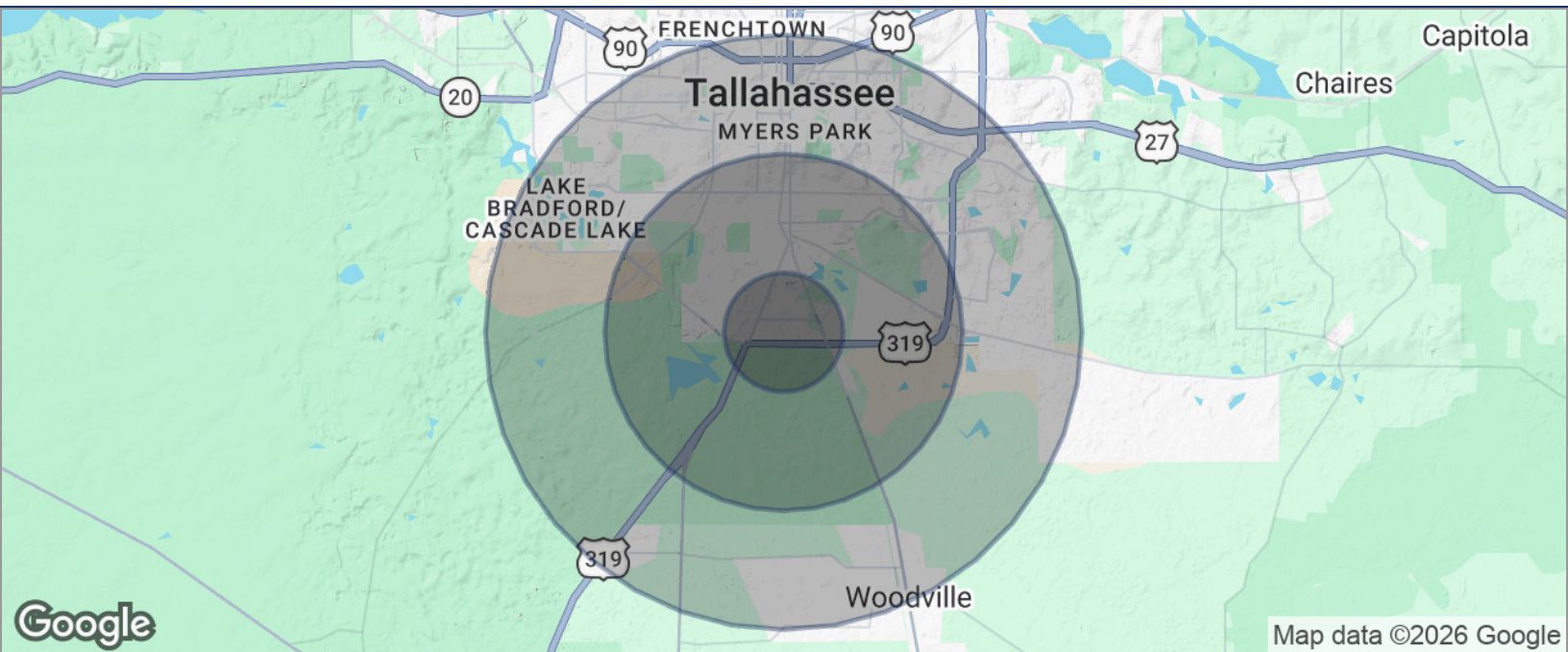
Trey DeSantis
850.766.6868
trey@tlgproperty.com

TLG REAL ESTATE SERVICES
3520 Thomasville Road, Suite 200, Tallahassee, FL 32309
850.385.6363





DEMOGRAPHICS MAP
4770 SHELFER RD
 TALLAHASSEE, FL 32305



POPULATION	1 MILE	3 MILES	5 MILES
TOTAL POPULATION	3,149	24,202	84,510
MEDIAN AGE	29.8	30.2	28.8
MEDIAN AGE (MALE)	25.2	28.6	29.0
MEDIAN AGE (FEMALE)	37.3	33.0	29.5
HOUSEHOLDS & INCOME	1 MILE	3 MILES	5 MILES
TOTAL HOUSEHOLDS	1,208	9,153	32,418
# OF PERSONS PER HH	2.6	2.6	2.6
AVERAGE HH INCOME	\$58,138	\$61,035	\$62,770
AVERAGE HOUSE VALUE	\$245,868	\$188,567	\$219,221

* Demographic data derived from 2020 ACS - US Census

Trey DeSantis
 850.766.6868
 trey@tlgproperty.com

TLG REAL ESTATE SERVICES
 3520 Thomasville Road, Suite 200, Tallahassee, FL 32309
 850.385.6363

