

PREMIER EAST WENATCHEE OFFICE SUITE FOR LEASE!

EAST WENATCHEE OFFICE

255 ROCK ISLAND RD E, EAST WENATCHEE, WA



255 ROCK ISLAND RD E – BUILDING VIEW WITH SUITE AND ENTRY AT RIGHT



FRONT OF SUITE VIEW, WITH PARKING AREA INCLUDED

Office Suite 255 Rock Island Rd E

- 2,594 Rentable Square Feet
- Dedicated Entry
- Parking Included
- Mix of Private Offices and Open Area, Fully Built-Out
- High End Buildout
- Plug and Play Ready
- Excellent Access & Visibility
- High End Office Location!

KEENAN & PARTNERS

CONSULTING BROKERAGE AND ADVISORY

Tom Keenan

tkeenan@keenanandpartners.com

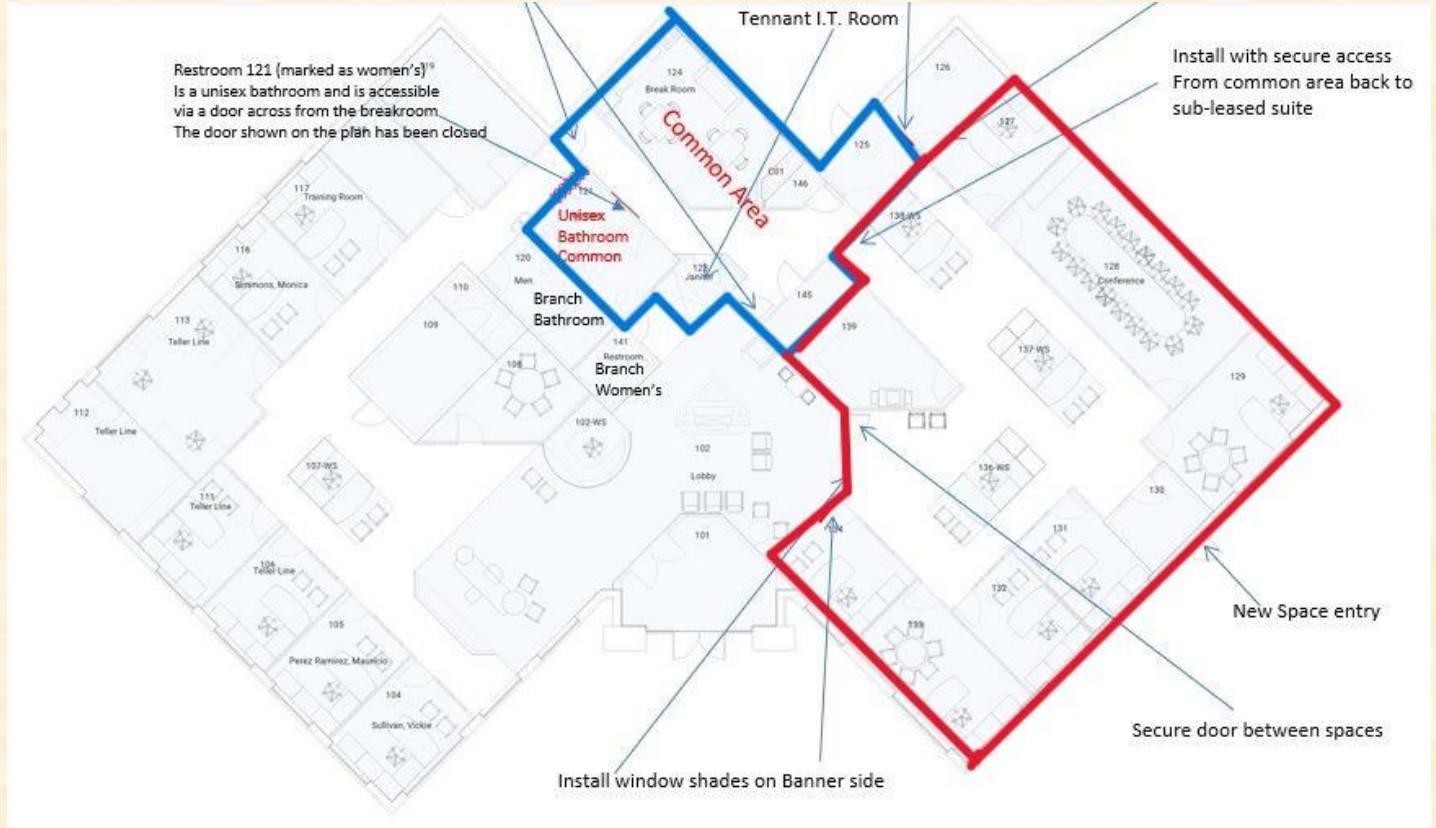
(503) 705-6393

WA Managing Broker #25956

PREMIER EAST WENATCHEE OFFICE SUITE FOR LEASE!

EAST WENATCHEE OFFICE

255 ROCK ISLAND RD E, EAST WENATCHEE, WA



BUILDING FLOOR PLAN WITH AVAILABLE SUITE SHOWN HIGHLIGHTED IN RED – PRIVATE ENTRY, 7 PRIVATE OFFICES, CONFERENCE ROOM, OPEN AREA WITH DESKS, AND FULL ACCESS TO COMMON AREA WITH KITCHEN & RESTROOM (COMMON AREA HIGHLIGHTED IN BLUE).

OFFICE SUITE

255 ROCK ISLAND ROAD E
WENATCHEE, WA

CONSISTING OF 2,594 RENTABLE SQUARE FEET.
INCLUDES PRIVATE ENTRY AT PARKING AREA. FULLY
BUILT OUT AND MOVE IN READY.

KEENAN & PARTNERS

CONSULTING BROKERAGE AND ADVISORY

Tom Keenan

tkeen@keenanandpartners.com

(503) 705-6393

WA Managing Broker #25956

PREMIER EAST WENATCHEE OFFICE SUITE FOR LEASE!

EAST WENATCHEE OFFICE

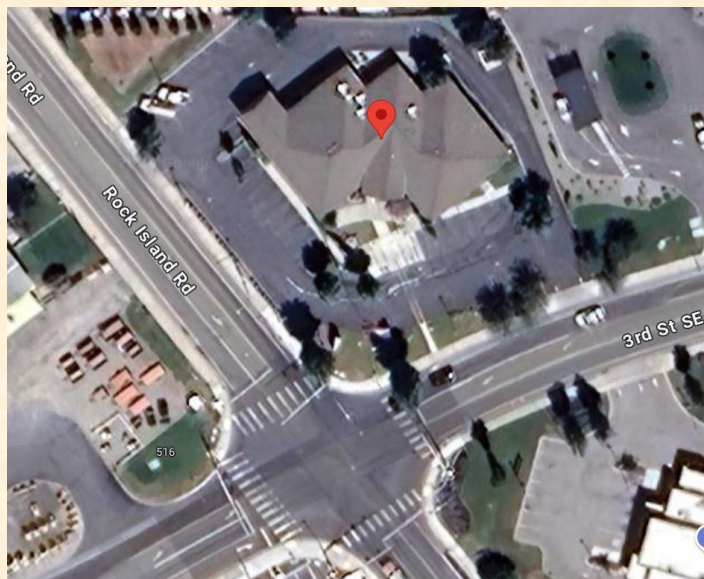
255 ROCK ISLAND ROAD E, EAST WENATCHEE, WA



INTERIOR – OPEN AREA & OFFICES



PRIVATE OFFICE



AERIAL VIEW – BUILDING AND PARKING AREA



PRIVATE OFFICE

KEENAN & PARTNERS

CONSULTING BROKERAGE AND ADVISORY

Tom Keenan

tkeenan@keenandpartners.com

(503) 705-6393

WA Managing Broker #25956

PREMIER EAST WENATCHEE OFFICE SUITE FOR LEASE!

EAST WENATCHEE OFFICE

255 ROCK ISLAND ROAD E, EAST WENATCHEE, WA



PRIVATE OFFICE



OPEN AREA WITH DESKS



FRONT OF SUITE WITH DEDICATED PARKING IN VIEW



CORNER OFFICE

KEENAN & PARTNERS

CONSULTING BROKERAGE AND ADVISORY

Tom Keenan

tkeenan@keenanandpartners.com

(503) 705-6393

WA Managing Broker #25956