

MICHIGAN
CENTRAL



NAI Farberman
Commercial Real Estate Services, Worldwide.

Farberman Group

MIDWEST EXPERTISE, GLOBAL REACH.

2101-2105 Michigan Ave
Detroit, MI 48126

Dimensions are subject to field verification

Presented By:

Harrison Yaldeo

Sales Associate
313 953 0430 | yaldeo@farberman.com

Wendy Acho

Leasing and Sales Associate
248 563 0739 | acho@farberman.com

Property Summary

2101-2105 Michigan Ave
Detroit, MI 48126

Michigan Ave

14th St

Property Highlights

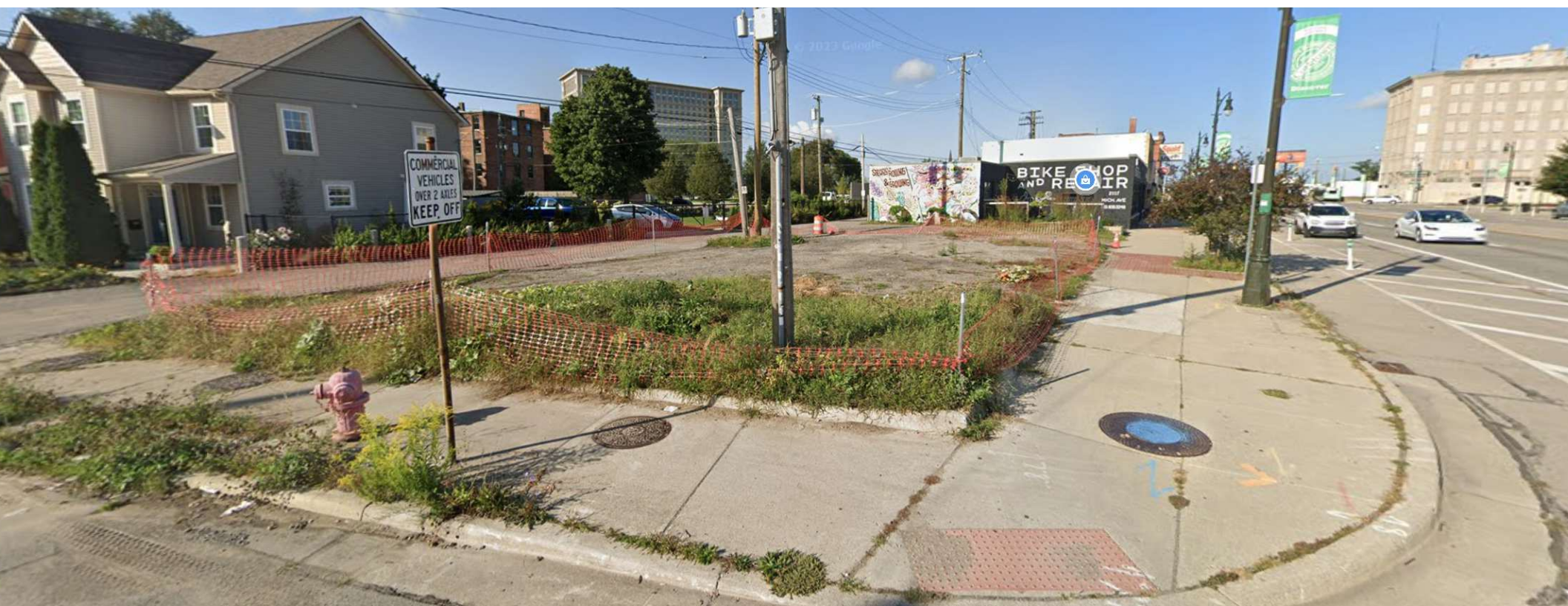
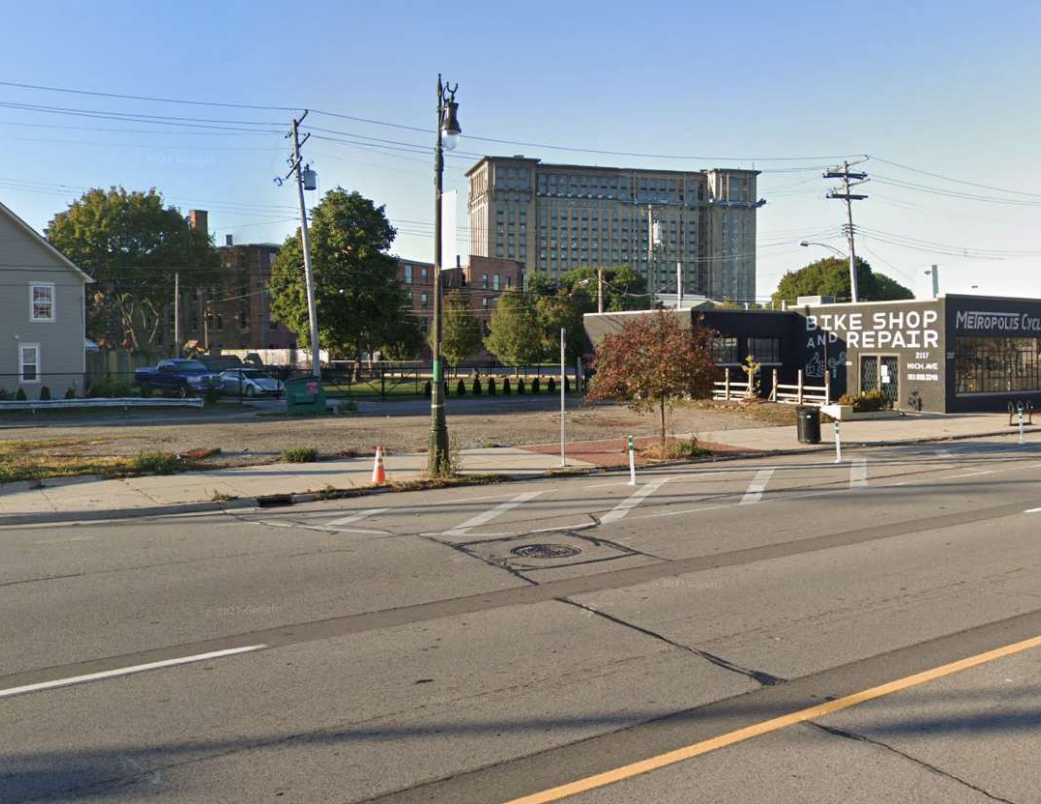
- 0.075 Acres in Corktown, Detroit
- B4 Zoning
- Corner Lot - Roughly 62 FT of Frontage on Michigan Avenue
- Michigan Avenue and Wabash St (one block off 14th St)
- Prominently positioned in front of the newly renovated/activated Michigan Central Station
- Minutes from and easy access to I-75 and I-96 Freeways

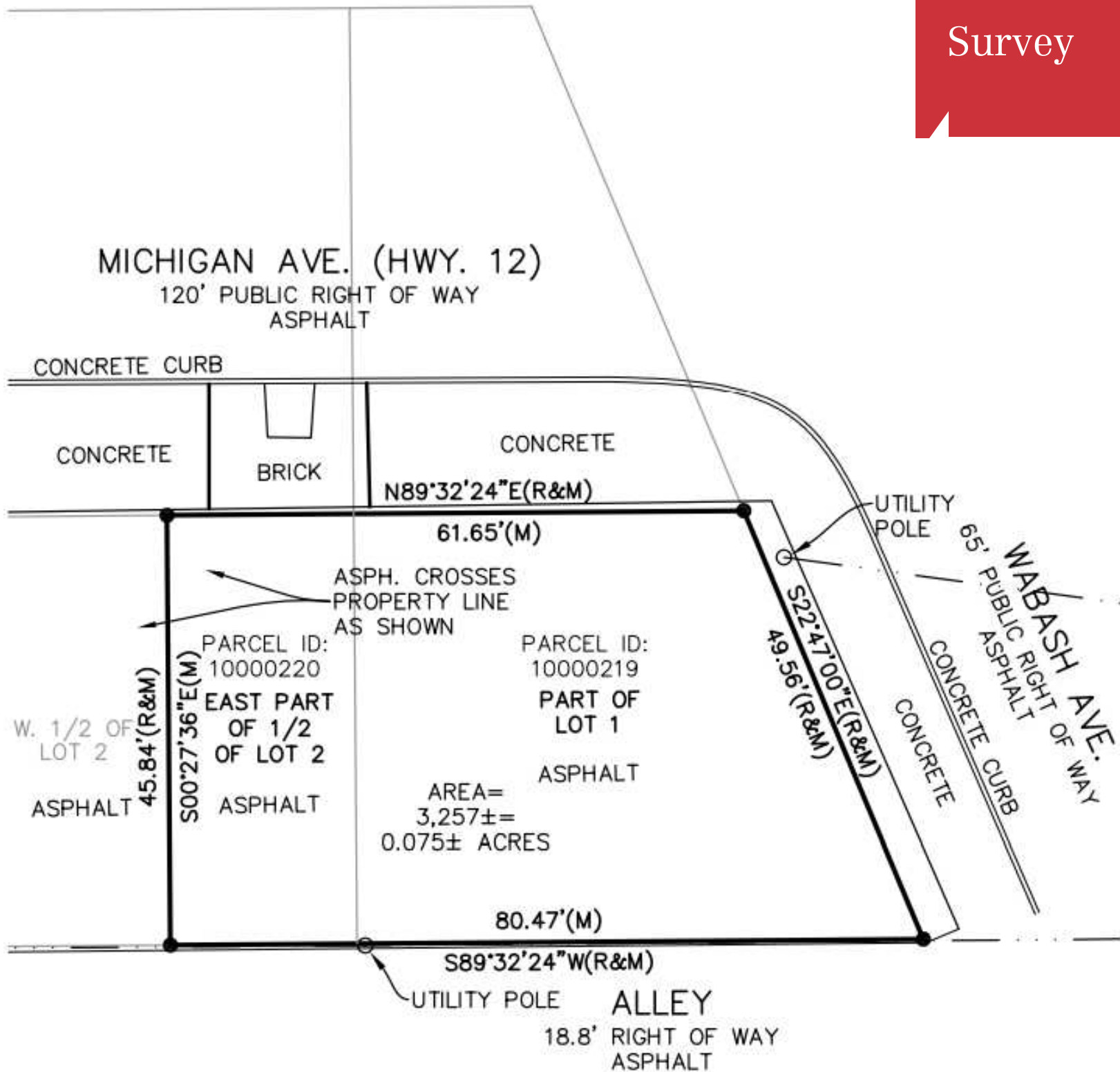
Offering Summary

Sale Price:	Contact Listing Agent(s)
Lot Size:	0.075 Acres

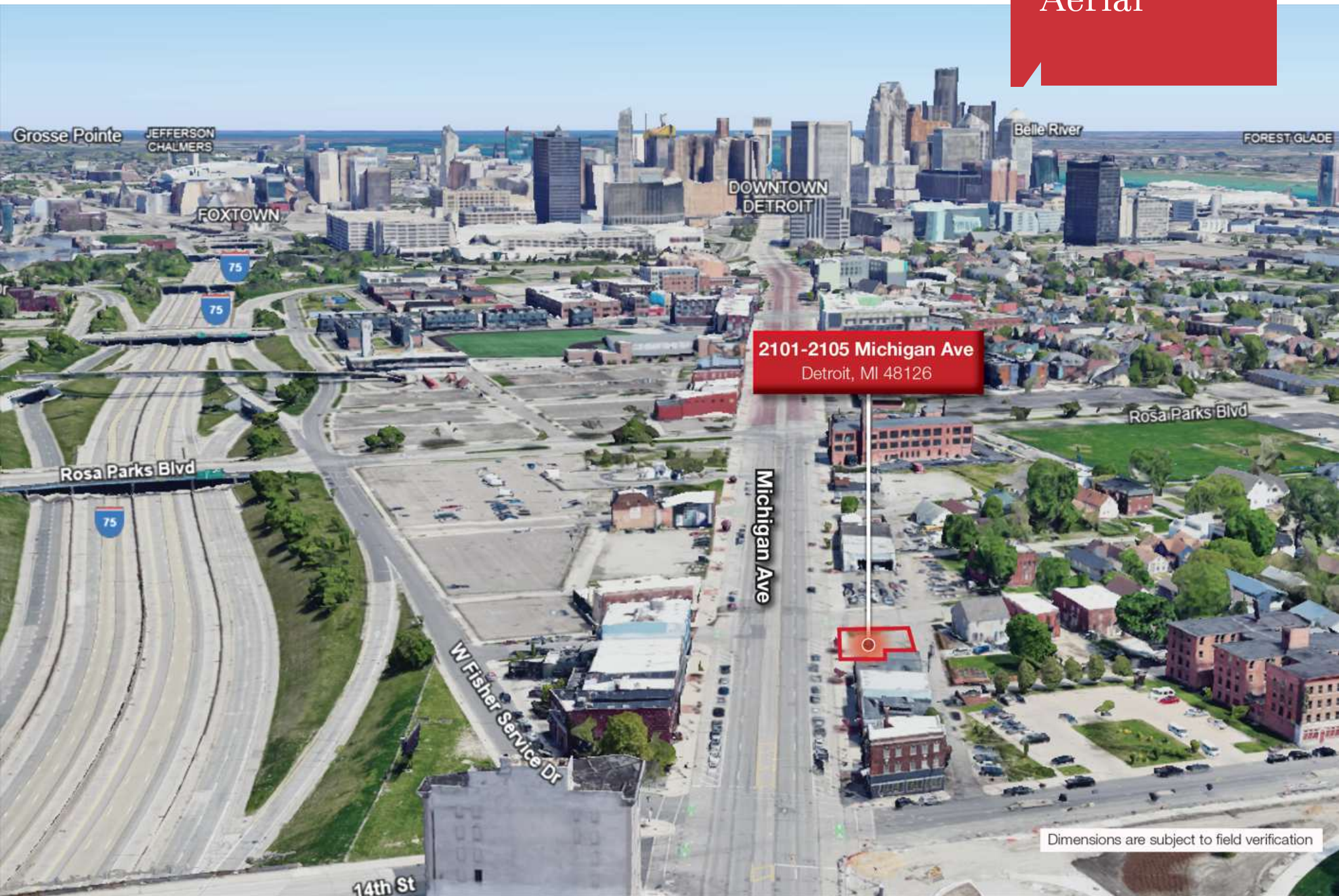
Demographics	1 Mile	3 Miles	5 Miles
Total Households	4,744	43,064	95,953
Total Population	9,508	91,235	232,360
Average HH Income	\$60,428	\$58,589	\$54,510

Additional Photos





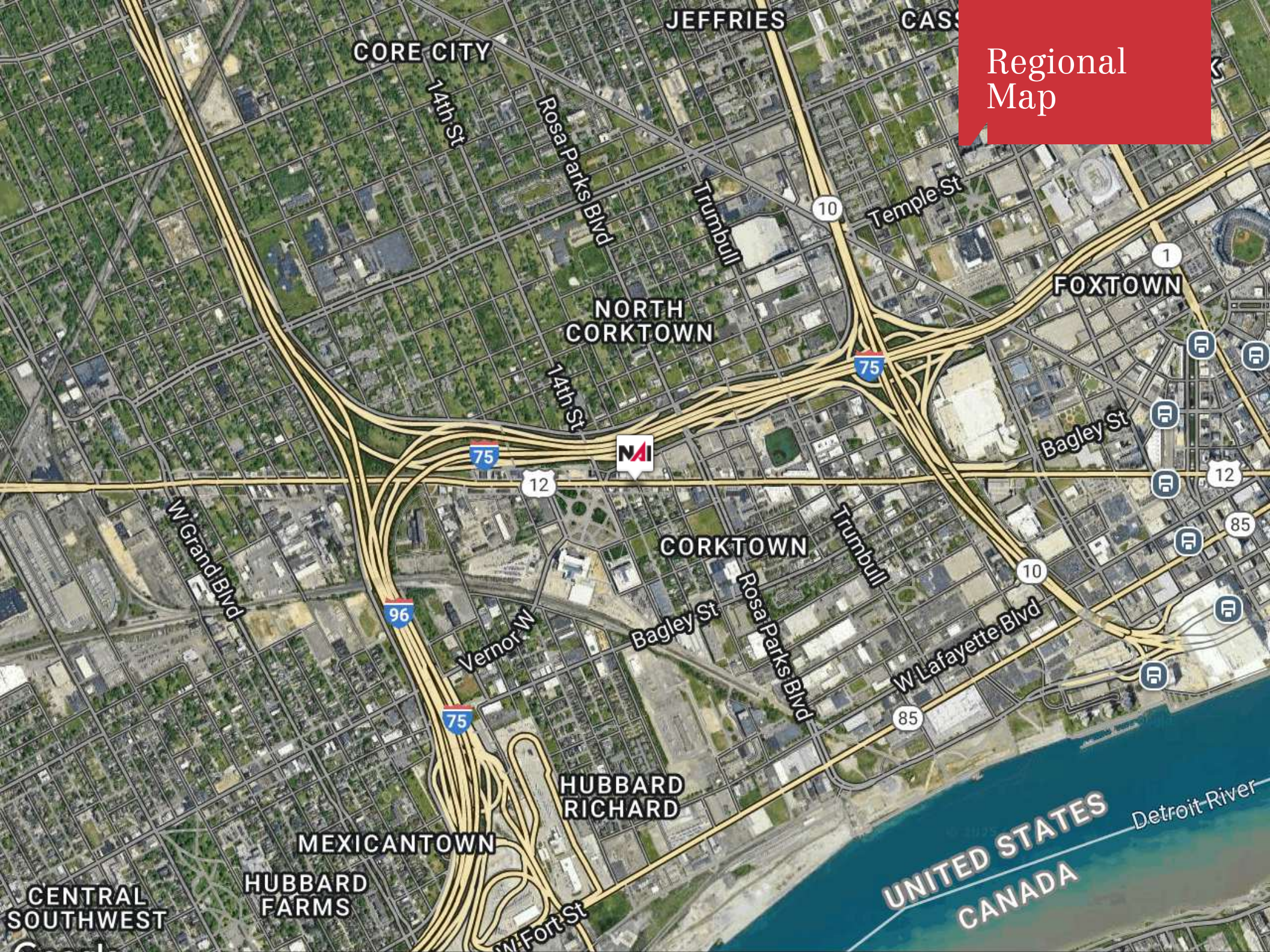
Aerial



2101-2105 Michigan Ave
Detroit, MI 48126

Dimensions are subject to field verification

Regional
Map



Demographics Map & Report

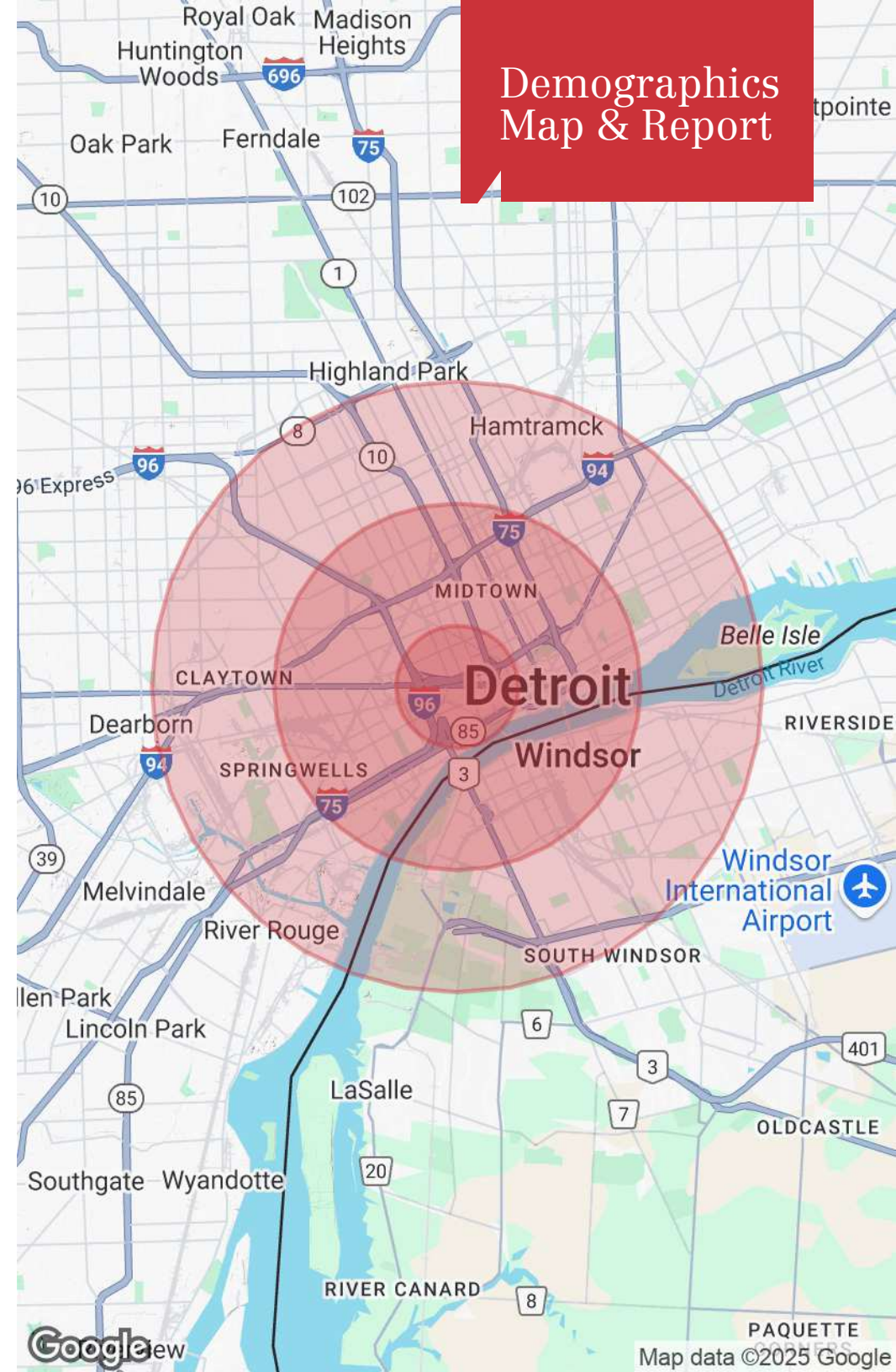
Population

	1 Mile	3 Miles	5 Miles
Total Population	9,508	91,235	232,360
Average Age	38	38	37
Average Age (Male)	37	37	37
Average Age (Female)	39	38	38

Households & Income

	1 Mile	3 Miles	5 Miles
Total Households	4,744	43,064	95,953
# of Persons per HH	2	2.1	2.4
Average HH Income	\$60,428	\$58,589	\$54,510
Average House Value	\$268,503	\$255,365	\$197,100

Demographics data derived from AlphaMap



31700 Middlebelt Road
Suite 225
Farmington Hills, MI 48334
248 353 0500

www.naifarbman.com

NAI **Farbman** | **FG** **Farbman**
Group[®]
MIDWEST EXPERTISE, GLOBAL REACH.