

134 HADDON AVENUE

WEST BERLIN, NJ 08091

MIXED USE
COMMERCIAL
PROPERTY



MIXED USE BUILDING | AVAILABLE FOR SALE

EXCLUSIVELY
REPRESENTED BY
THE FLYNN COMPANY

CINDY WEINER
CWEINER@FLYNNCO.COM
215-561-6565 X 129

The
Flynn
Company

PROPERTY DETAILS:



Square Footage: **4,012 SF** mixed use building



Minutes away from Routes 30 and 73, as well as I-295, the New Jersey Turnpike, and AC Expressway.



Individualized outside entrance to office + garage
Individualized entrance to residential apartment



Well suited for a variety of uses



Six (6) parking spaces for office + garage
Three (3) parking spaces for residential apartment
Street parking available.



Call for more details & asking price!

THE FLYNN COMPANY

WWW.FLYNNCO.COM | 1621 WOOD STREET, PHILADELPHIA, PA 19103 | 215.561.6565

PROPERTY PHOTOS

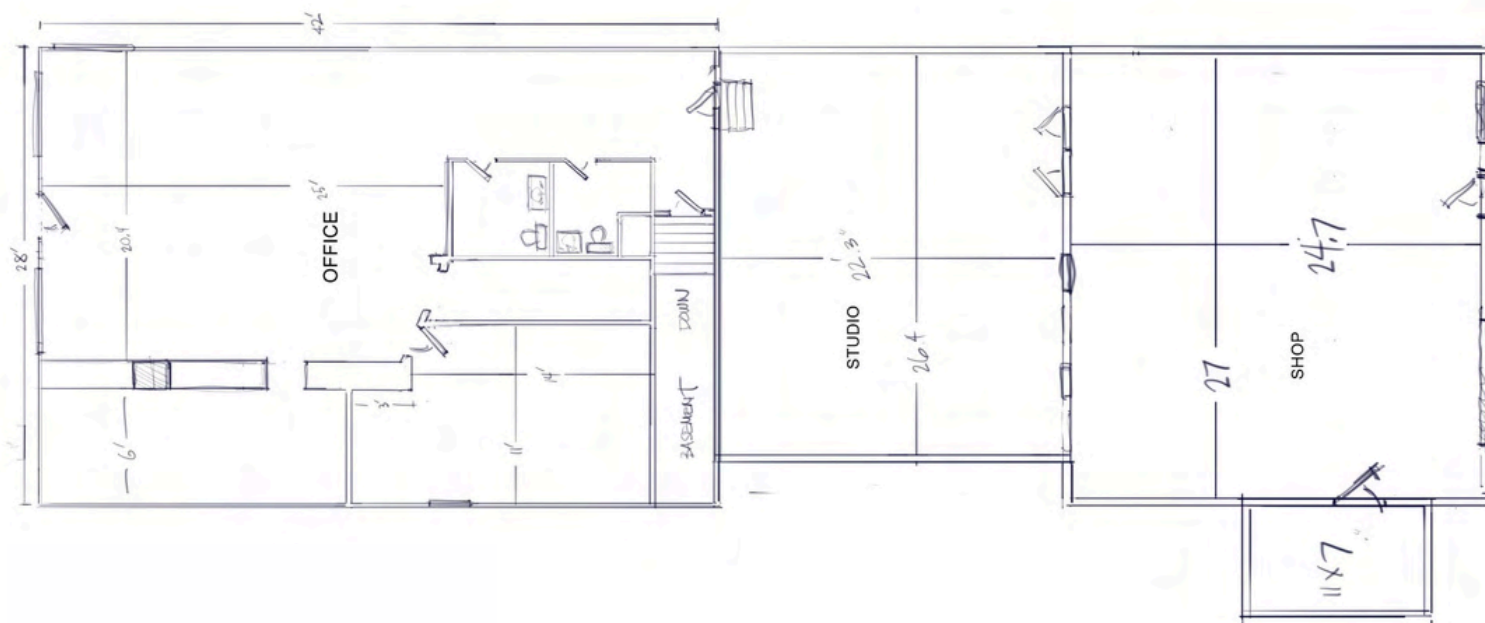


RESIDENTIAL PROPERTY PHOTOS



FLOOR PLAN

1st Floor



LOCATION



Population

2 mile	5 mile	10 mile
24,103	151,289	556,949



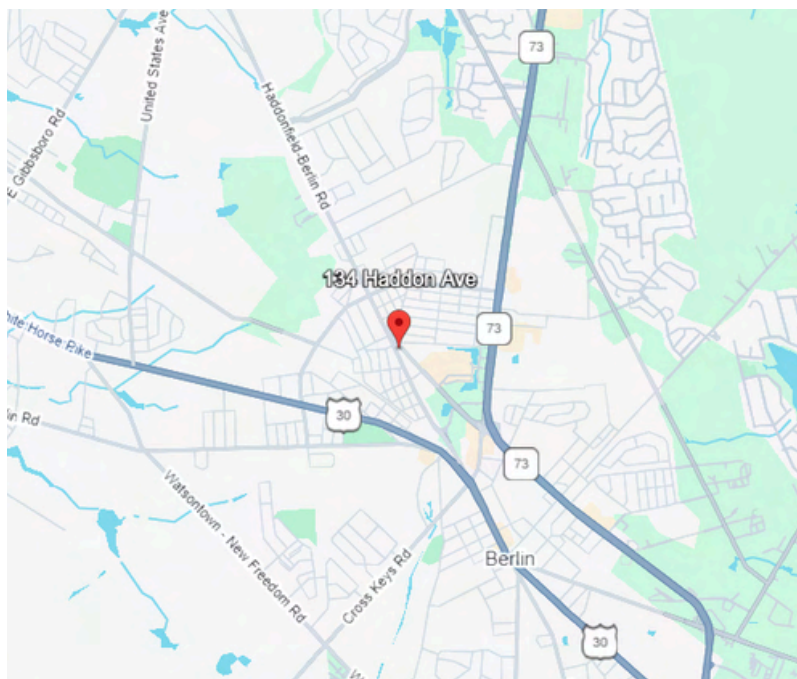
Households

2 mile	5 mile	10 mile
9,003	58,788	215,561



Median Household
Income

2 mile	5 mile	10 mile
\$115,163	\$112,109	\$122,280



**For More Information
Please Contact:**

CINDY WEINER
CWEINER@FLYNNCO.COM
215-561-6565 X 129