

PROPERTY FOR LEASE



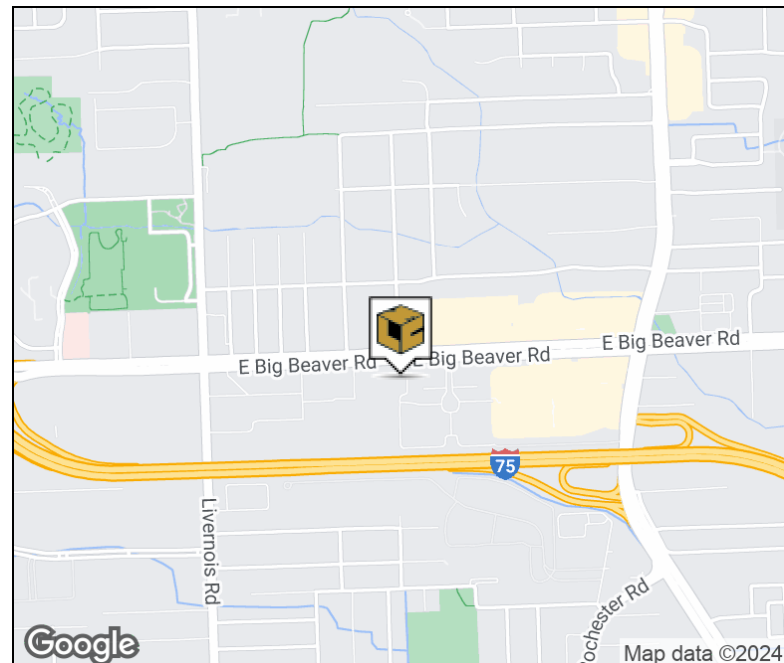
Century Office Plaza

400 E Big Beaver Rd Troy, MI 48083



Property Highlights

- 5,866 Rentable Square Feet
- High Visibility Big Beaver Location
- Building Signage Available
- Amenities Include Covered Parking, Rooftop Patio, & Open Glass Design
- Close to I-75 Interchange



FOR MORE INFORMATION:

Mason L. Capitani, SIOR
Managing Partner
248.637.7795
mlcapitani@lmcap.com

Aaron Smith
Vice President
248.637.3515
asmith@lmcap.com



CONNECT WITH US

248.637.9700 | www.LMCap.com

Information contained herein was obtained from sources deemed to be reliable but is not guaranteed. Subjects to prior sales, changes of price or withdrawal.

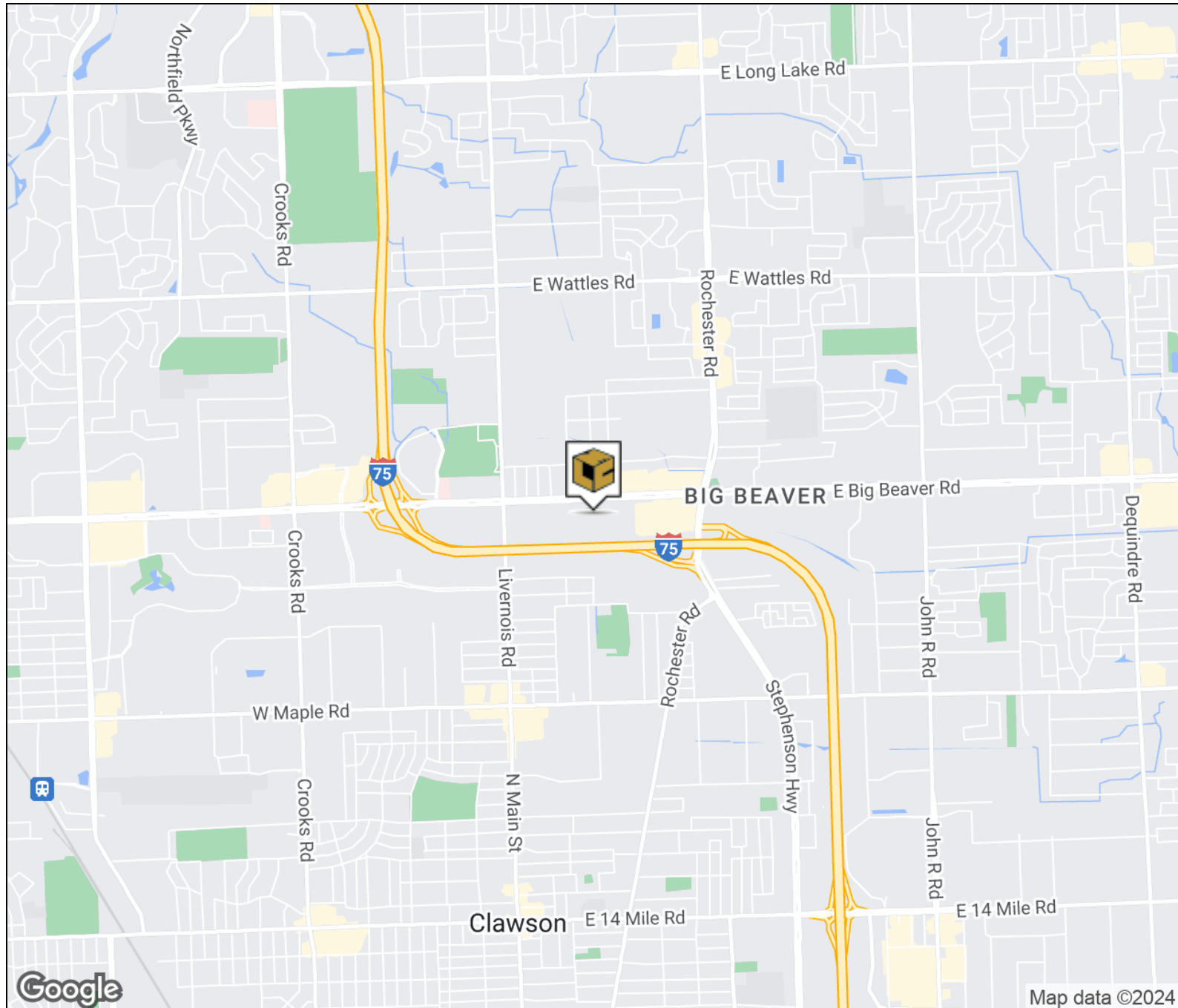
PROPERTY FOR LEASE

Century Office Plaza

400 E Big Beaver Rd Troy, MI 48083



L. MASON CAPITANI
CORFAC INTERNATIONAL



FOR MORE INFORMATION:

Mason L. Capitani, SIOR

Managing Partner

248.637.7795

mlcapitani@lmcap.com

Aaron Smith

Vice President

248.637.3515

asmith@lmcap.com



CONNECT WITH US

248.637.9700 | www.LMCap.com

Information contained herein was obtained from sources deemed to be reliable but is not guaranteed. Subjects to prior sales, changes of price or withdrawal.

PROPERTY FOR LEASE



L. MASON CAPITANI
CORFAC INTERNATIONAL

Century Office Plaza

400 E Big Beaver Rd Troy, MI 48083

Location Information

Street Address	400 E Big Beaver Rd
City, State, Zip	Troy, MI 48083
County	Oakland
Cross-Streets	Big Beaver Rd & Livernois Rd
Nearest Highway	I-75

Building Information

Building Size	12,680 SF
Building Class	B
Occupancy %	100%
Tenancy	Multiple
Number of Floors	2
Year Built	2005
Gross Leasable Area	12,680 SF
Load Factor	0.0
Annual Escalations	\$0.50
Partition Allowance	Negotiable

Lease Rate

**\$18.50 SF/yr
+ Util. + Janitorial**

Property Information

Property Type	Office
Property Subtype	Office Building
Zoning	Office
Lot Size	12,680 SF
APN #	20-27-101-016

Parking & Transportation

Parking Type	Surface
Parking Ratio	4.0

Available Suites

Third Floor - 5,866 SF	\$18.50 + Utilities + Janitorial
------------------------	----------------------------------

FOR MORE INFORMATION:

Mason L. Capitani, SIOR

Managing Partner
248.637.7795
mlcapitani@lmcap.com

Aaron Smith

Vice President
248.637.3515
asmith@lmcap.com



CONNECT WITH US

248.637.9700 | www.LMCap.com

Information contained herein was obtained from sources deemed to be reliable but is not guaranteed. Subjects to prior sales, changes of price or withdrawal.

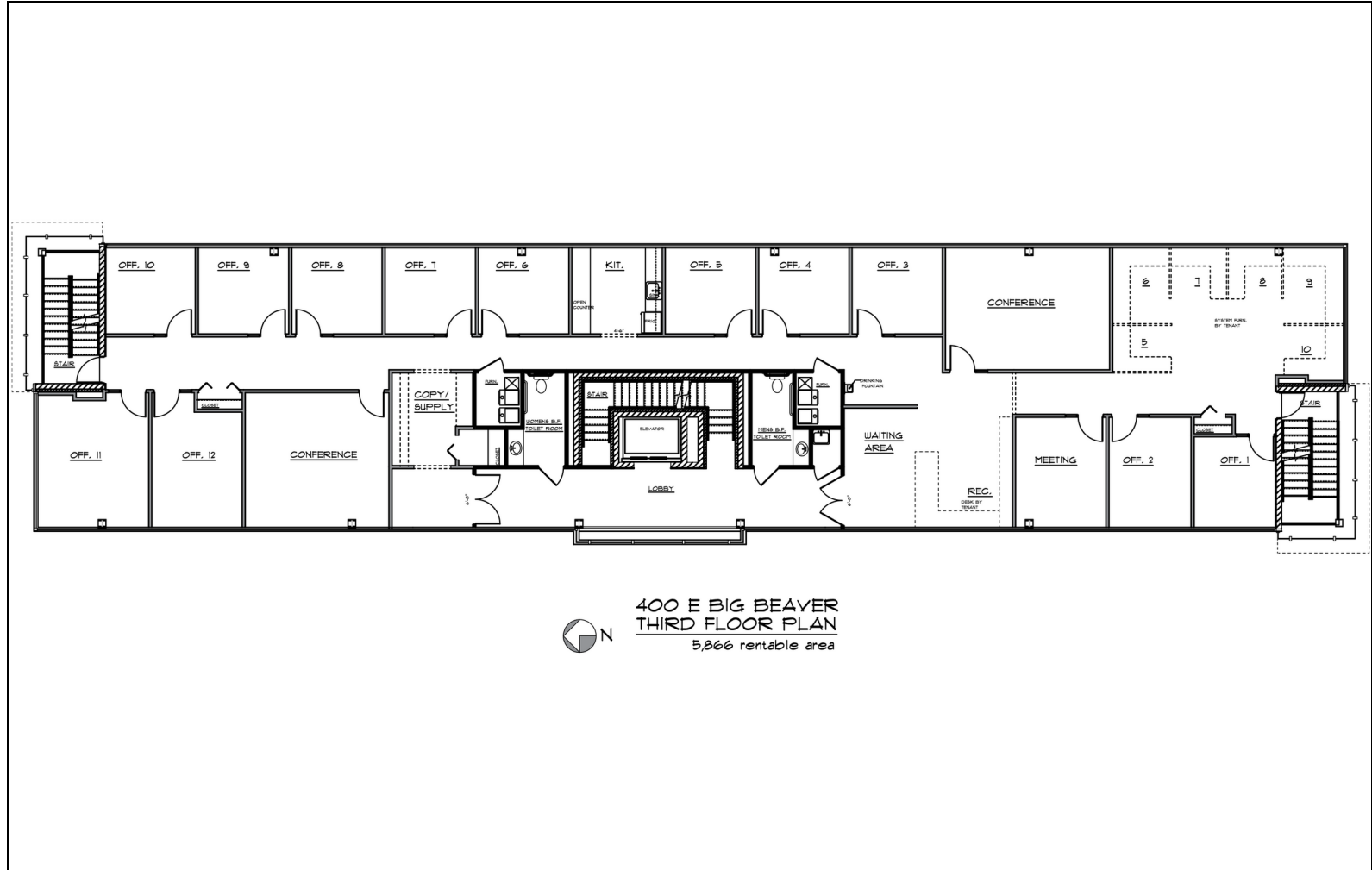
PROPERTY FOR LEASE

Century Office Plaza

400 E Big Beaver Rd Troy, MI 48083



L. MASON CAPITANI
CORFAC INTERNATIONAL



Available Space

Suite	Size (SF)	Lease Type	Lease Rate	Available
Third Floor	5,866 SF	+Utilities +Janitorial	\$18.50 SF/yr	12/1/2024

FOR MORE INFORMATION:

Mason L. Capitani, SIOR
Managing Partner
248.637.7795
mlcapitani@lmcap.com

Aaron Smith
Vice President
248.637.3515
asmith@lmcap.com



CONNECT WITH US

248.637.9700 | www.LMCap.com

Information contained herein was obtained from sources deemed to be reliable but is not guaranteed. Subjects to prior sales, changes of price or withdrawal.