

Office Membership Plan

Inventory:

- 148 sqft office space inventory (4 people) OR.
- 182 sqft office inventory (6 people).
- Furnished on request or unfurnished (standing desks, ergonomic chairs & lockable drawers to space capacity).
- Private, lockable space + security cameras.
- Lights, electricity, power plugs, switches.
- Onsite parking.

Monthly membership fee includes:

- 4x communal luxury bathrooms (inc. shower facility) and kitchen.
- Overheads: HVAC/ Heating, utilities, high speed wifi, amenities, pest control, janitorial services.
- Workspace for you + your team.
- Doorman/ concierge services.
- Free private phone booths.
- Conference room facility access.
- Amenities upkeep inc. greenery.

Set up fee covers:

- Loloft community app access.
- Keycard access.
- Decal sticker.
- Welcome packet.



Tour

Book a tour Consultation to explore your Loloft options.

Choose

Select your space & membership term length.

Start

Your membership starts when you move in.

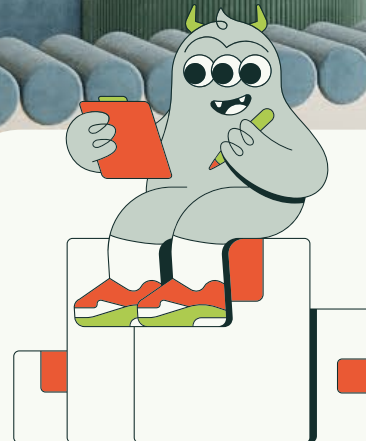
Membership Plan Benefits:

- No long-term contracts.
- Transparent monthly fee (inc. all bills + utilities).
- Free daily coffee (Onyx) & herbal tea.
- Hassle-free credit card, cash, check & ACH payment options each month.
- Community networking events.
- Free event space inc. for 1st month (\$1275 value).
- \$200 room booking/ \$100 printing credits.
- 24/7 Access for you and your guests.
- Size up or down as you grow with 30 days notice.
- Discount for multiple inventory/ element type bundles.

Secure your space now with 2x months deposit, first month upfront and a \$150-set up fee.

Pricing provided during tour session.

loloft®



Contact us to secure your Loloft space and membership today.



+1 479 208 6499



info@loloft.com