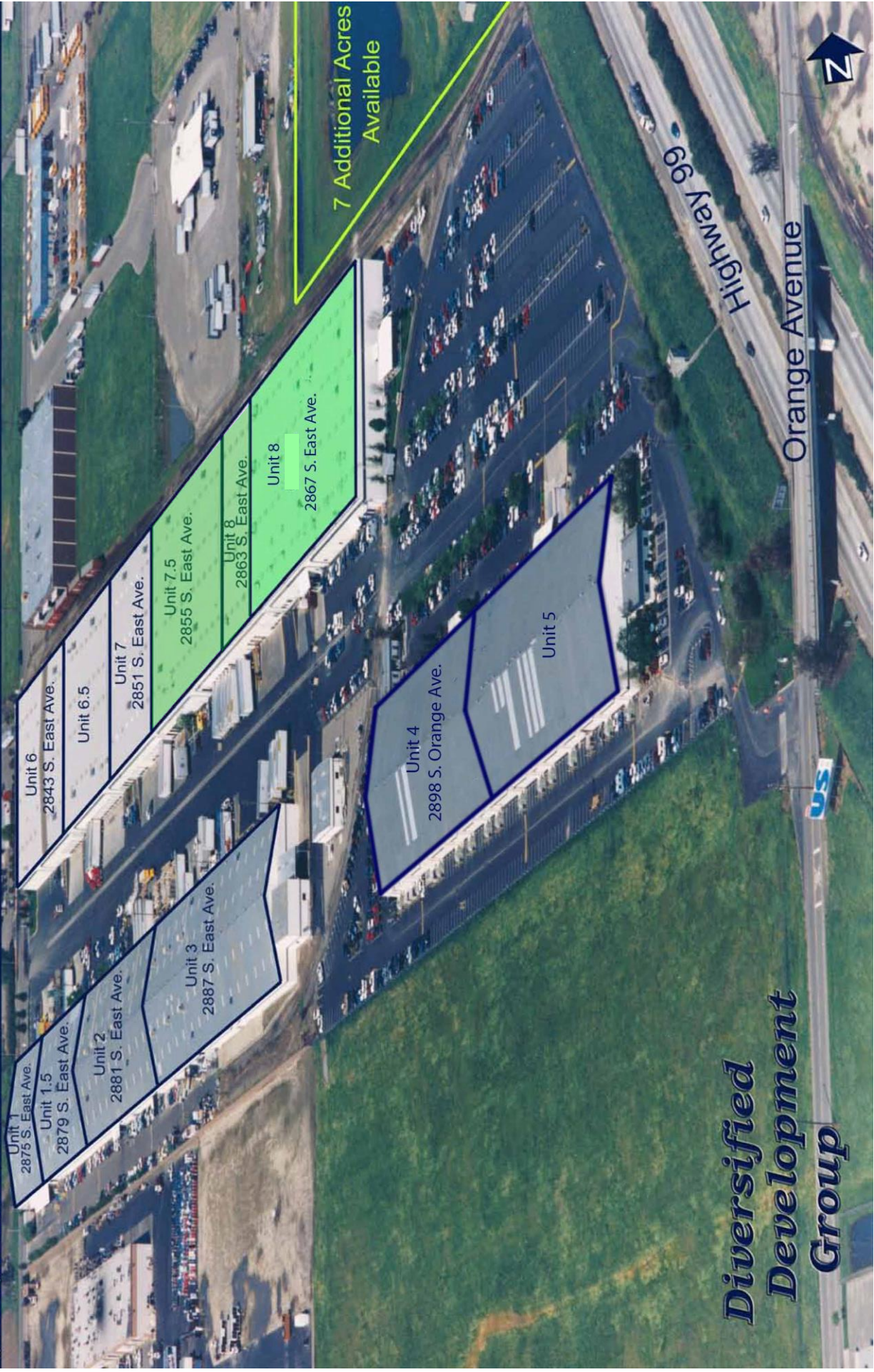


# FRESNO INDUSTRIAL CENTER

(559)-225-6363

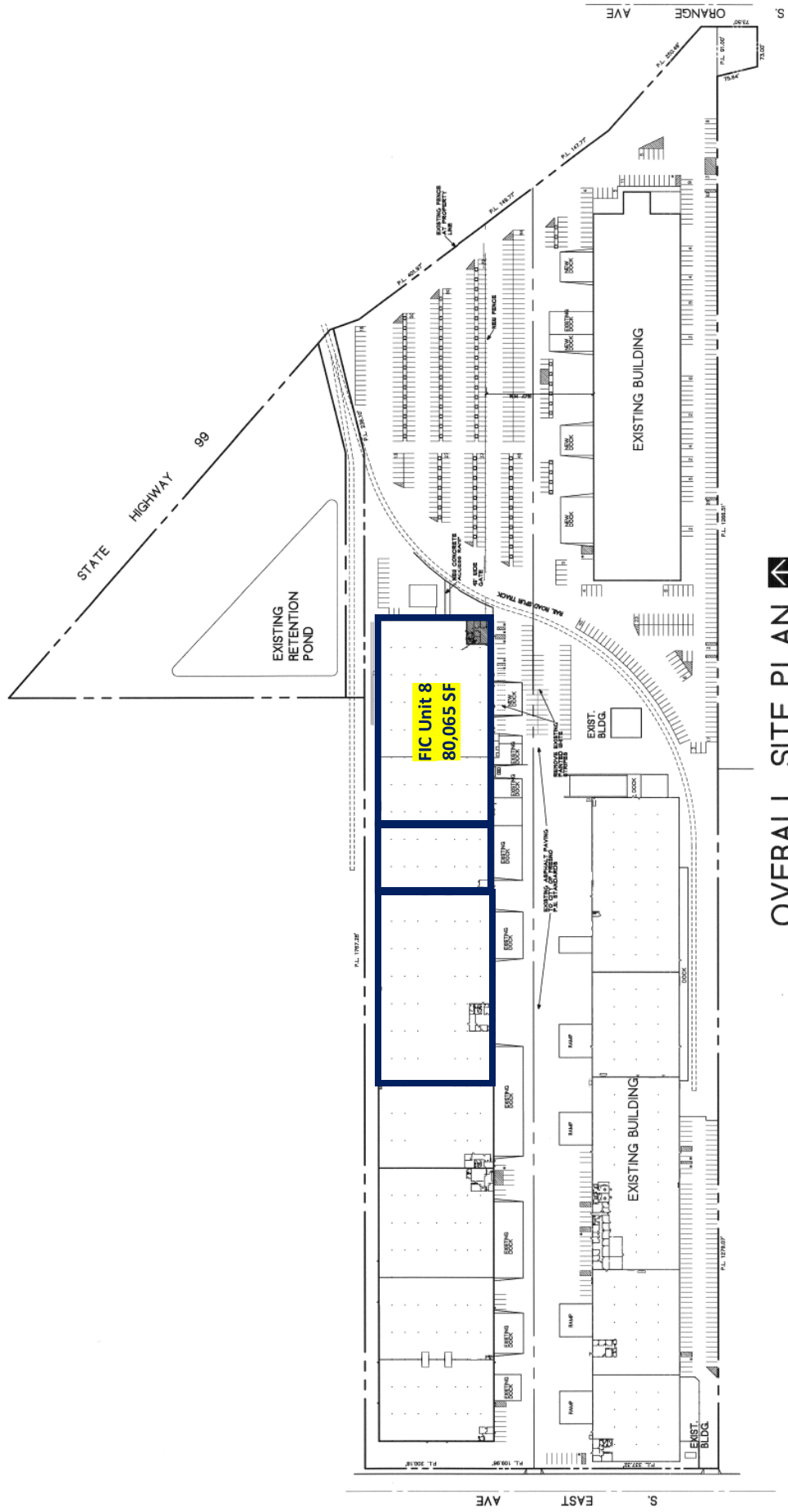
FRESNO, CA.



**Diversified  
Development  
Group**



**FIC Unit 8**  
**80,065 SF**



# OVERALL SITE PLAN

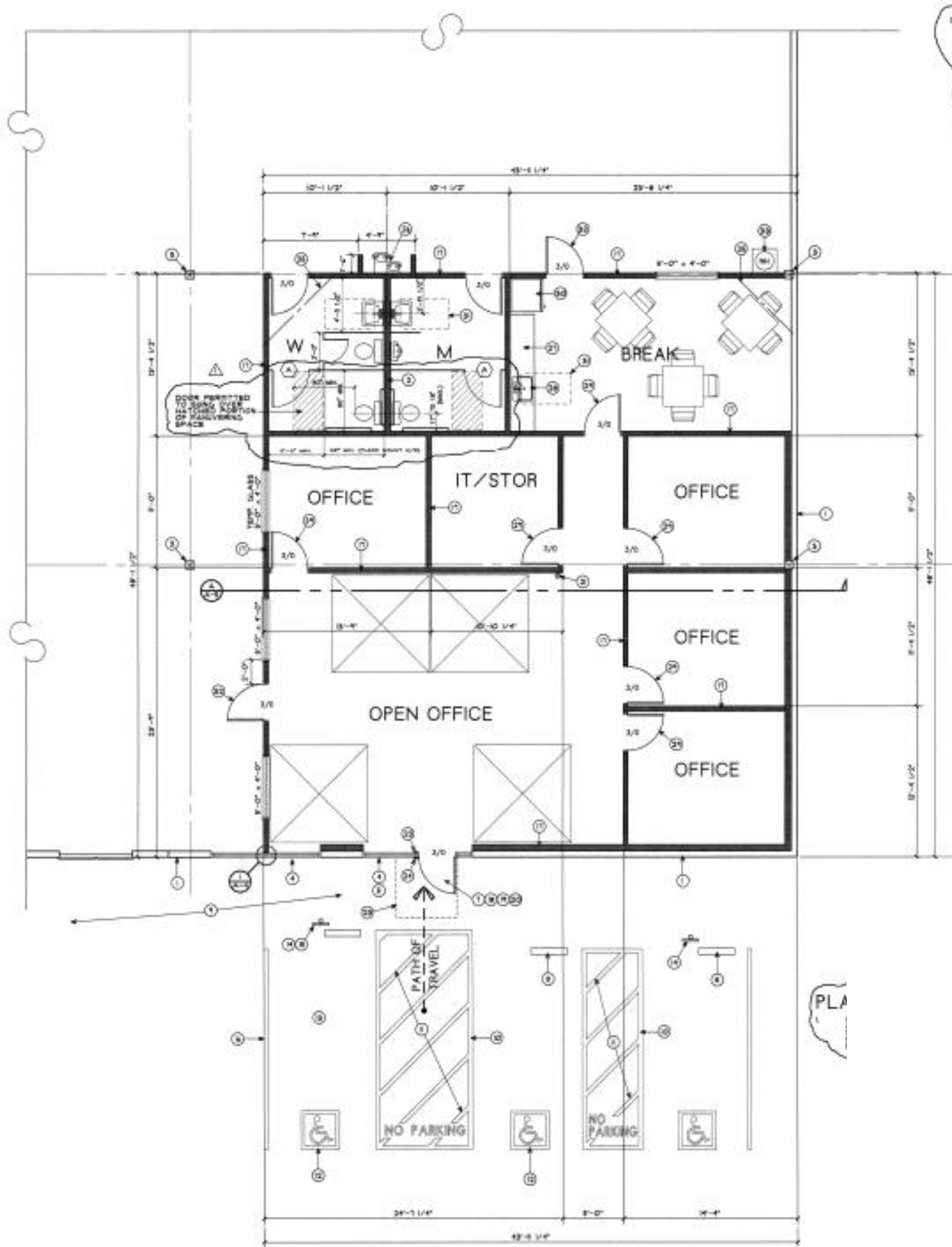
SCALE: 1"=100'



9 EAST AVE

5





**PROPOSED FLOOR PLAN** 2114 S.F.  
SCALE 1/4" = 1'-0"



**FRESNO INDUSTRIAL CENTER  
UNIT #8**

<b>AVAILABLE:</b>	80,065 SF
<b>DIMENSIONS:</b>	378' x 212'
<b>BAY SIZE:</b>	50' x 212' = 10,600 SF.
<b>COLUMN SPACING:</b>	50' x 24' and 50 x 34'
<b>CONCRETE SLAB:</b>	6"
<b>CLEAR HEIGHT:</b>	24' on sides to approx. 28' in center
<b>ROOF CONSTRUCTION:</b>	Panelized Wood System
<b>ROOFING:</b>	4-ply built up system
<b>SKY LIGHTS:</b>	4' x 8' -- 4 per bay
<b>DOCK APRON:</b>	Reinforced 6" concrete.
<b>DOCK HIGH DOORS:</b>	Eight (8) 8' x 10' dock doors
<b>FIRE SYSTEM:</b>	200 hp, 2,000 gpm fire pump .60/2,500 gpm
<b>ELECTRICAL:</b>	200 amp 480/277v 3ph 4w
<b>WAREHOUSE LIGHTING:</b>	T-5 fluorescent fixtures.
<b>OFFICE:</b>	2,114 SF
<b>ADDRESS:</b>	2863 S. East Avenue, Fresno, CA 93725

*For further information, please contact*  
**Marcus Pignotti**  
**Diversified Development Group**  
**7519 N. Ingram Ave., Suite 104**  
**Fresno, CA 93711**  
**(559) 225-6363, ext. 8**