



## 280 Shrewsbury St

280 Shrewsbury St, Boylston, MA 01505



**NRT**



**Brandon O'Neal**

Coldwell Banker Commercial NRT  
6 Park Ave, Suite 1, Worcester, MA 01605  
[brandon.oneal@nemoves.com](mailto:brandon.oneal@nemoves.com)  
(508) 795-7500

# 280 Shrewsbury St

\$18.00 /SF/YR

End cap available immediately at this recent (2021) retail center just 1/10 mile off of Rte 290 and minutes to Rte 495. This Class A building features a gorgeous facade, forced air/central AC, plentiful parking, and teller lane formerly used by the previous bank tenant. Uses include but are not limited to Professional office, bank, medical office/clinic/surgery, athletic center, childcare center, educational use, product showroom. High average daily traffic count. Don't hesitate - take a look today!...

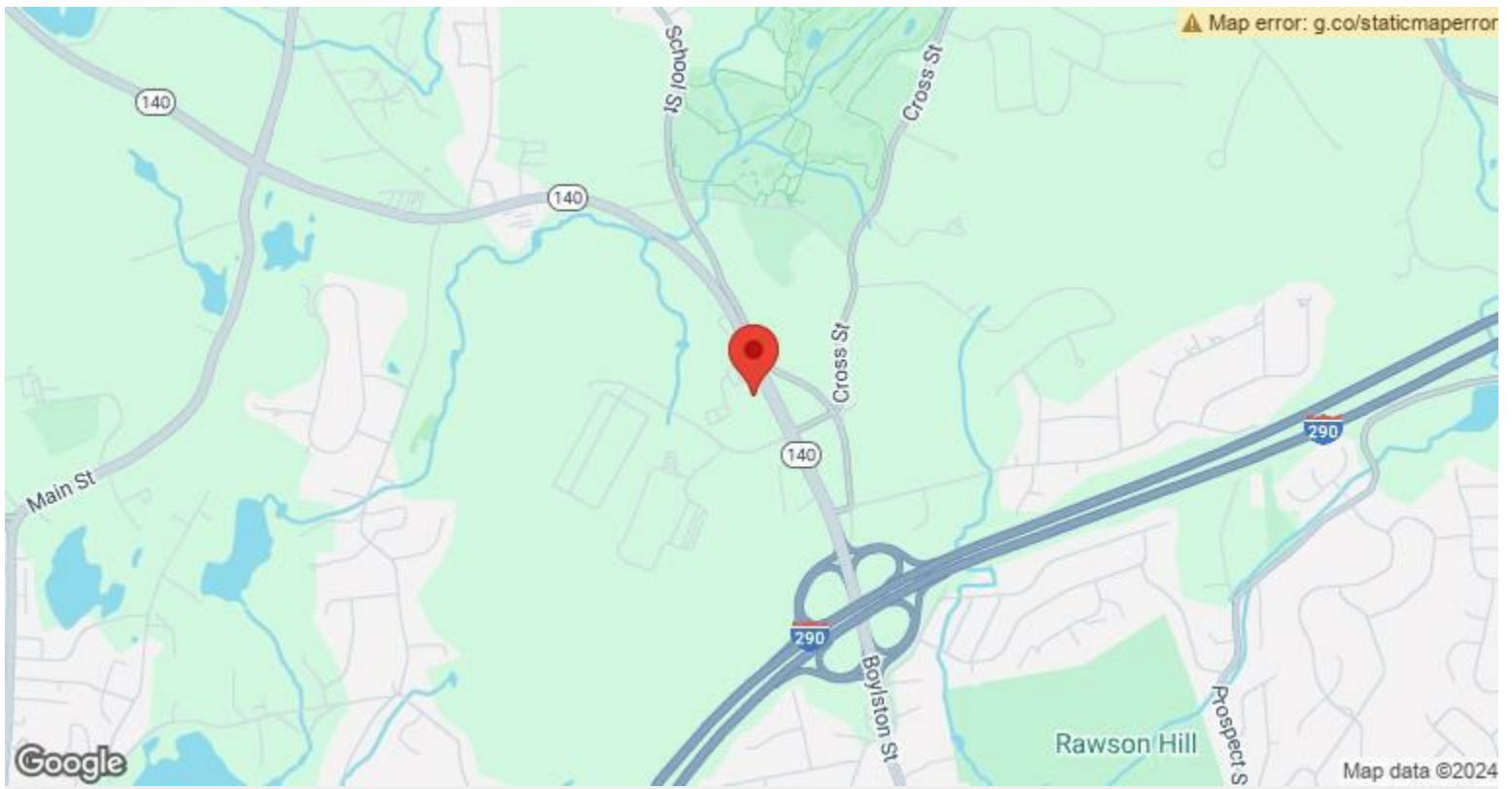
- Easy Access off of Rte 290 (.2 miles)
- High Visibility
- Built in 2021



Rental Rate:	\$18.00 /SF/YR
Property Type:	Retail
Property Subtype:	Bank
Gross Leasable Area:	9,730 SF
Year Built:	2018
Walk Score ®:	23 (Car-Dependent)
Rental Rate Mo:	\$1.50 /SF/MO

## 1st Floor Ste 1

Space Available	2,710 SF
Rental Rate	\$18.00 /SF/YR
Date Available	Now
Service Type	Triple Net (NNN)
Built Out As	Bank
Space Type	Relet
Space Use	Retail
Lease Term	5 Years



## 280 Shrewsbury St, Boylston, MA 01505

End cap available immediately at this recent (2021) retail center just 1/10 mile off of Rte 290 and minutes to Rte 495. This Class A building features a gorgeous facade, forced air/central AC, plentiful parking, and teller lane formerly used by the previous bank tenant. Uses include but are not limited to Professional office, bank, medical office/clinic/surgery, athletic center, childcare center, educational use, product showroom. High average daily traffic count. Don't hesitate - take a look today!



# Property Photos



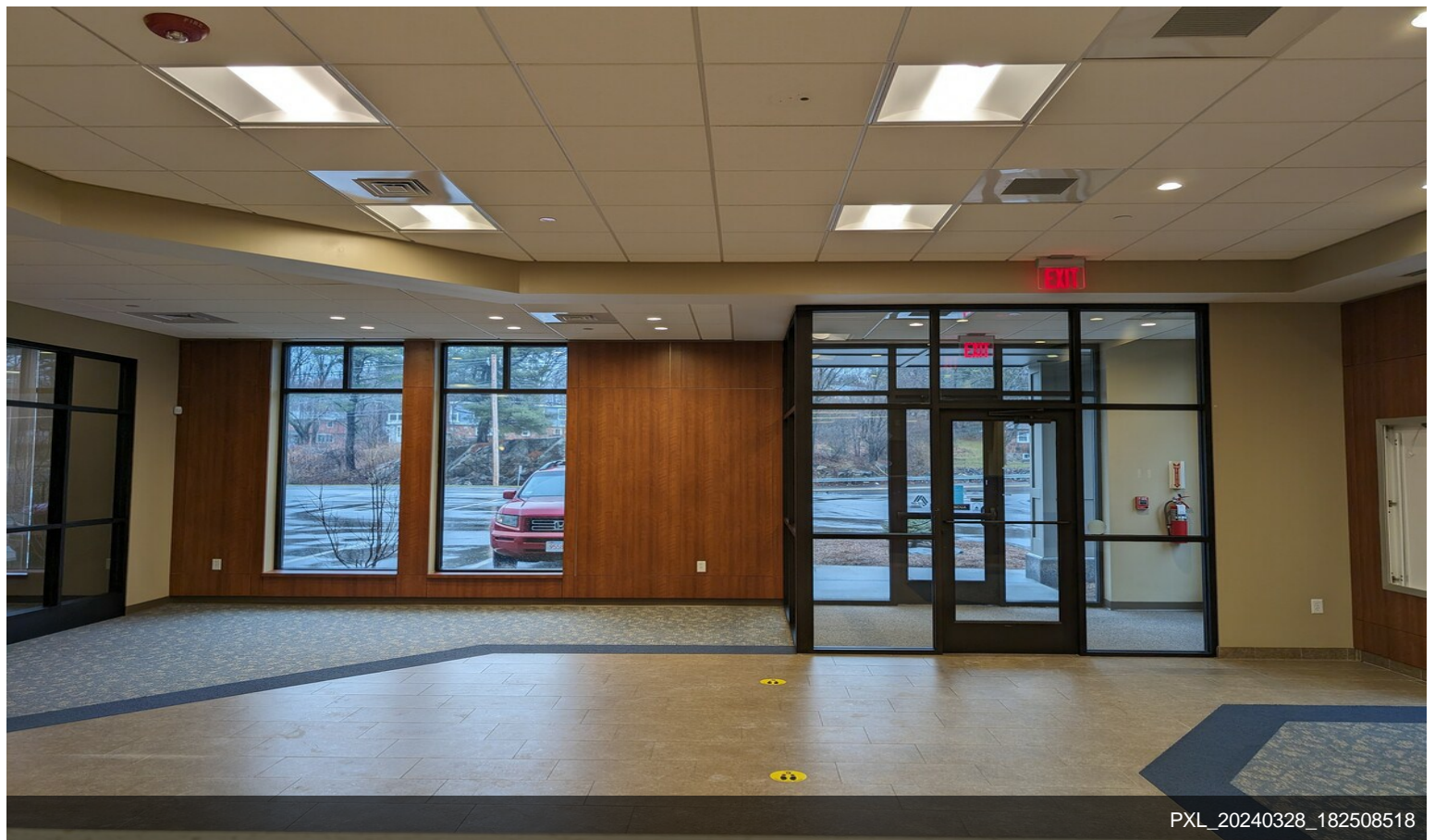
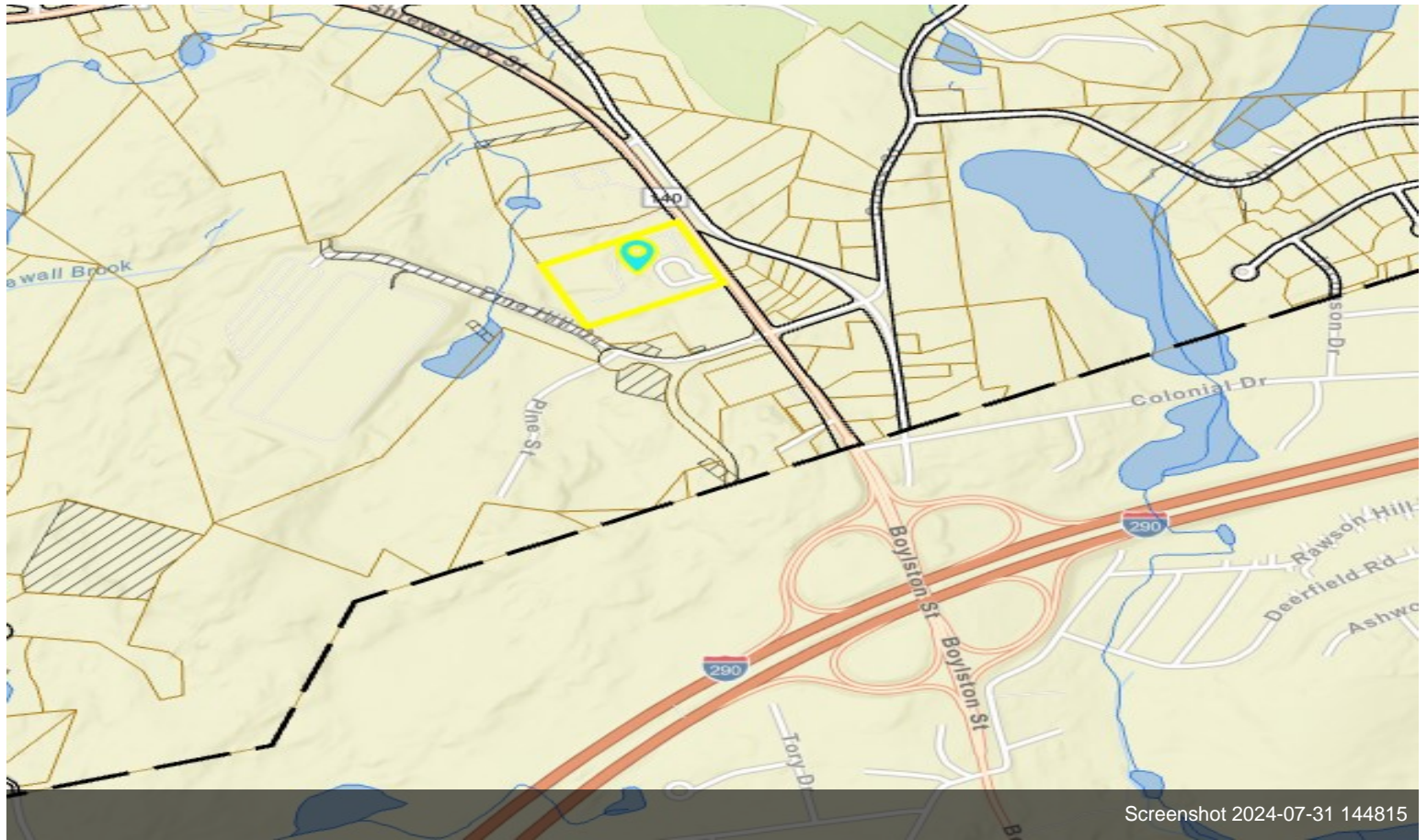
PXL\_20240328\_182418318



PXL\_20240303\_193224057

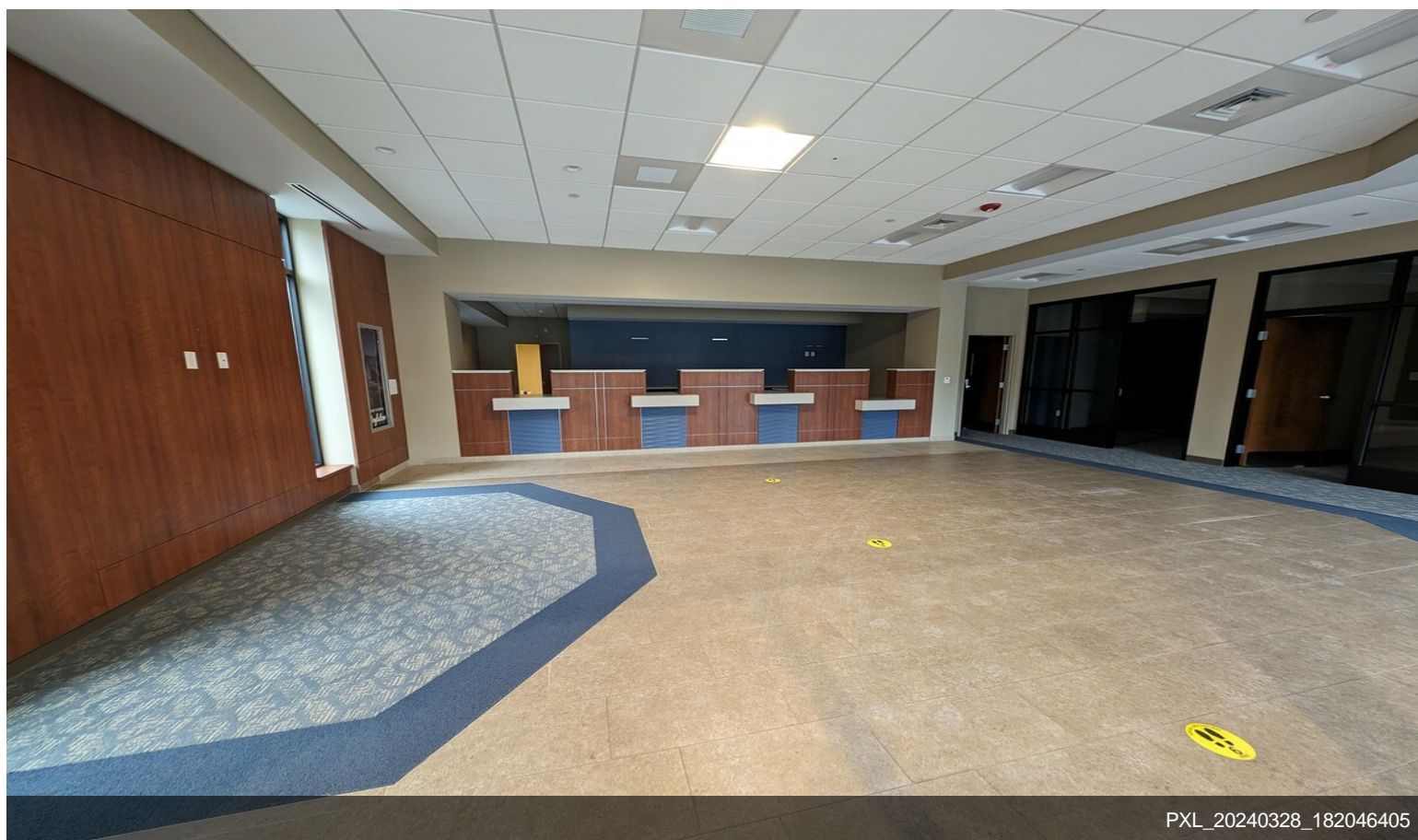
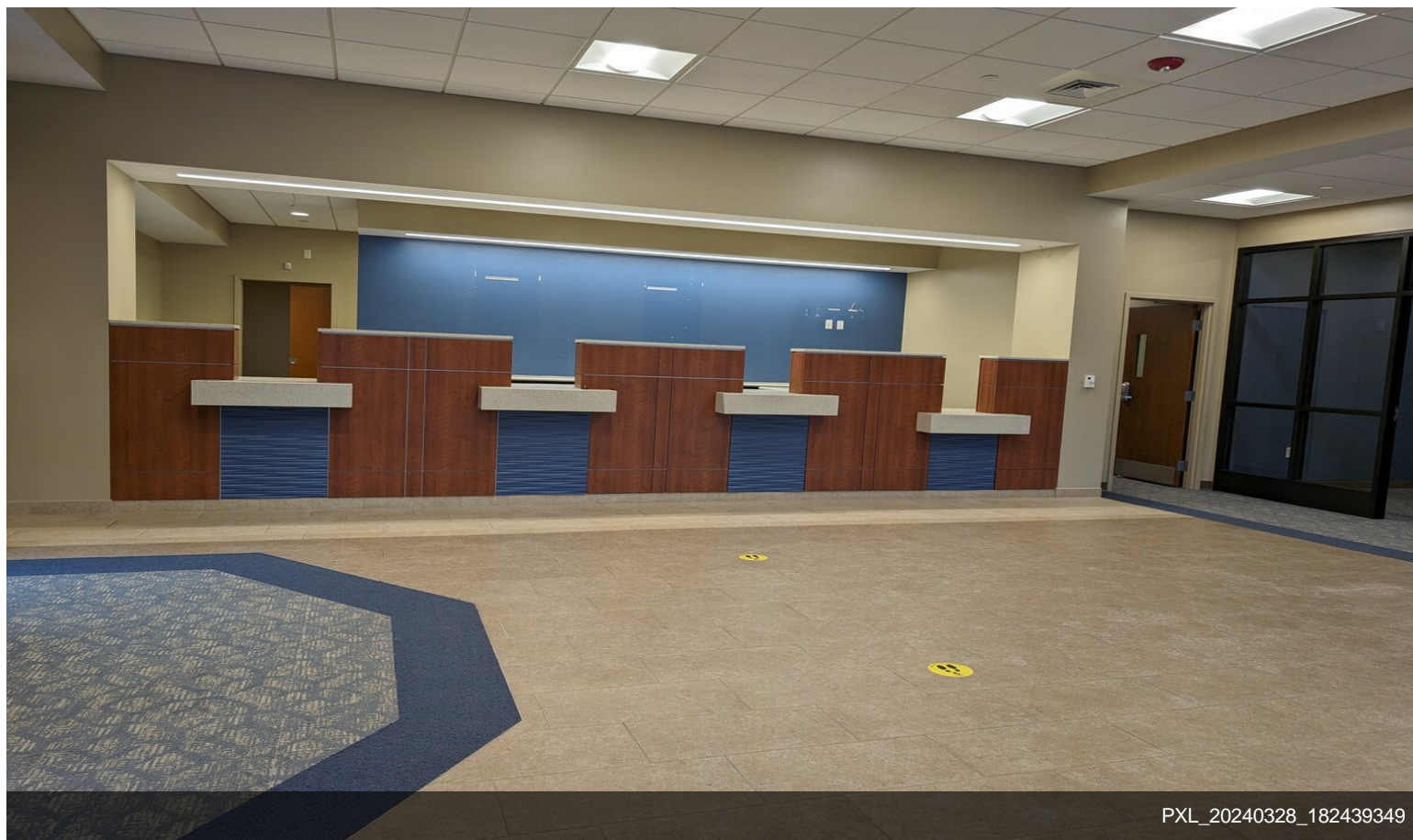


# Property Photos





# Property Photos





# Property Photos



PXL\_20240328\_182128475



PXL\_20240328\_182516186



# Property Photos



PXL\_20240328\_182138488.MP



PXL\_20240328\_182337302



# Property Photos





# Property Photos



PXL\_20240328\_182220396



PXL\_20240328\_182315709



# Property Photos



PXL\_20240328\_182200777



PXL\_20240328\_182203202





# Property Photos



PXL\_20240328\_182353661



PXL\_20240328\_182024938



# Property Photos





# Property Photos



PXL\_20240303\_193037221



PXL\_20240303\_193147928



# Property Photos



PXL\_20240303\_193229919



PXL\_20240303\_193231496



# Property Photos





# Property Photos



Building Photo