

7220 WISCONSIN AVENUE BETHESDA, MARYLAND 20814



- ❖ Centrally located in the heart of Bethesda
- ❖ Two blocks from the Bethesda Metro
- ❖ Upgraded common areas
- ❖ Newly renovated restrooms
- ❖ Elegant lobby



Floor	Suite	RSF
LL	10	7,587
2 nd	200	4,542
2 nd	201	2,145
2 nd	202	2,158
3 rd	300	5,645
4 th	402	3,950*

FULL 2ND FLOOR AVAILABLE

*Divisible to 1,558 RSF

- Building signage available
- Flexible lease term, 2 - 10 years
- Surface parking available
- Adjacent to Bethesda Row
- Onsite banking
- Steps to Starbucks, Tatte Bakery & Café, Panera, Subway, CVS, True Food Kitchen, the Montgomery Farm Women's Cooperative Market and many more!
- Locally family-owned and managed

*For more information
or to schedule a tour:*

301.961.9696

Sam Farnum

Ext. 216

sfarnum@amrcommercial.com

Bill Montrose

Ext. 203

wmontrose@amrcommercial.com

Although all information furnished is from sources we deem reliable, such information has not been verified and no express representation is made nor is any to be implied as to the accuracy thereof, and it is submitted subject to errors, omissions, or other conditions.



ALEXANDER, MONTROSE, RITTENBERG
Commercial Real Estate Brokerage
Est. 1994

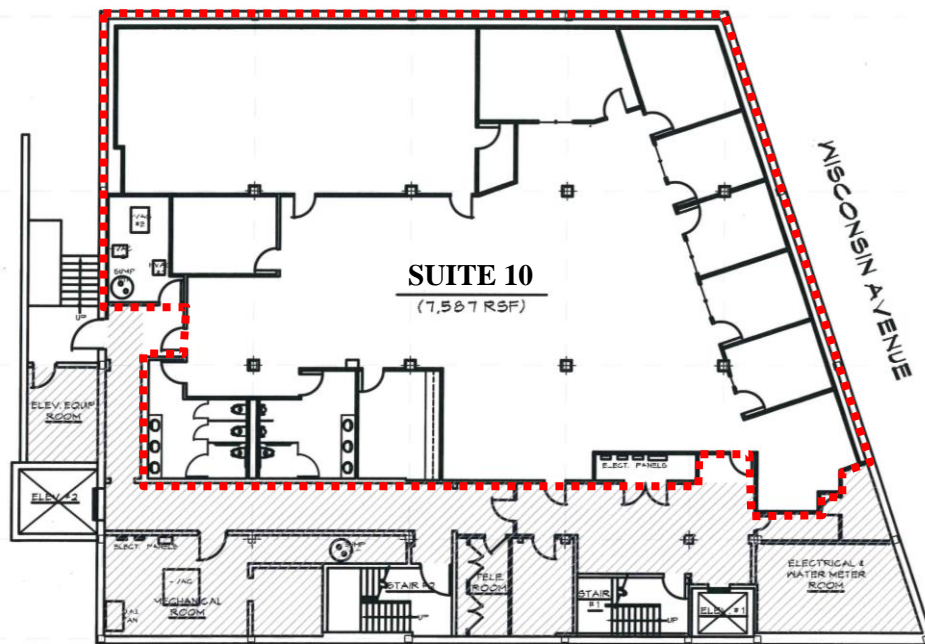
Celebrating
30
Years
1994-2024

A Member of **CORE**
NETWORK

LOWER LEVEL

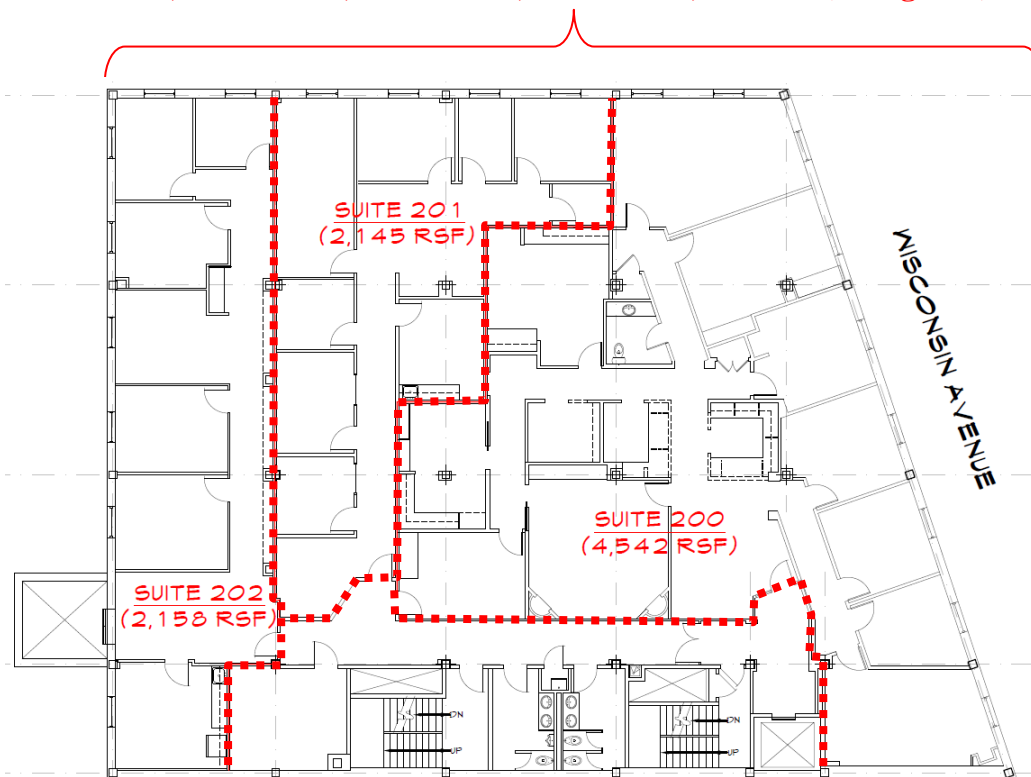
SUITE 10

7,587 RSF



FULL 2ND FLOOR

2,158 RSF + 2,145 RSF + 4,542 RSF = 8,845 RSF (contiguous)



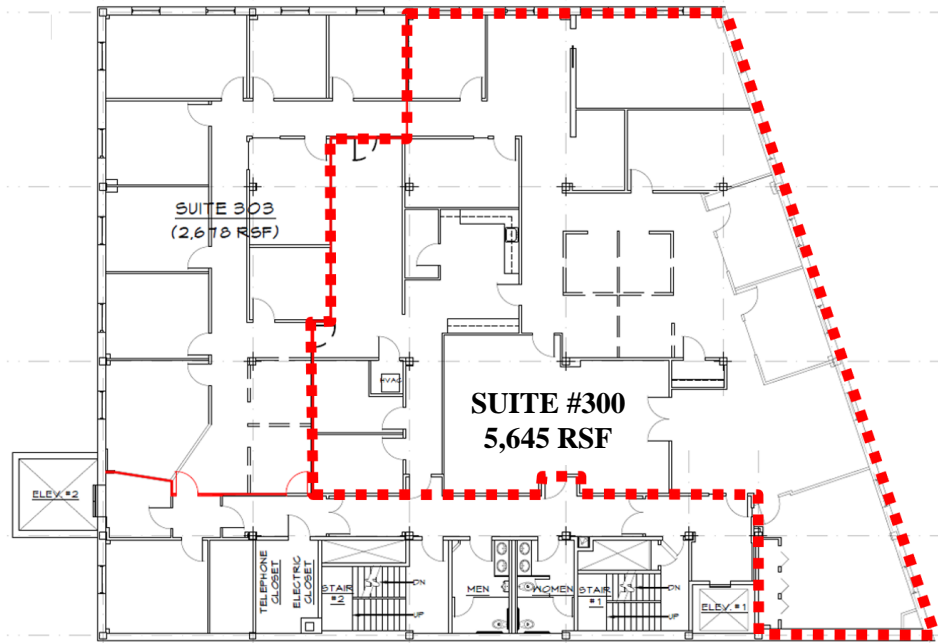
Not to Scale / Measurements Approximate

Although all information furnished is from sources we deem reliable, such information has not been verified and no express representation is made nor is any to be implied as to the accuracy thereof, and it is submitted subject to errors, omissions, or other conditions.

3RD FLOOR

SUITE 300

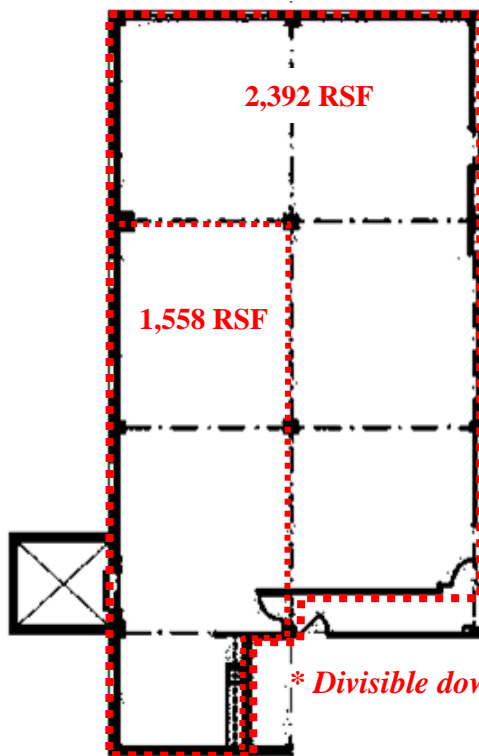
5,645 RSF



4TH FLOOR

SUITE 402

3,950 RSF*



Not to Scale / Measurements Approximate

Although all information furnished is from sources we deem reliable, such information has not been verified and no express representation is made nor is any to be implied as to the accuracy thereof, and it is submitted subject to errors, omissions, or other conditions.