

# FOR LEASE | PLYMOUTH INDUSTRIAL YARD & OFFICE

987 S. MILL ST.



**987 S. MILL ST**  
**PLYMOUTH, MI 48170**

## PROPERTY HIGHLIGHTS:

- Prime Location – Conveniently located in desirable Plymouth, MI with easy access to I275 & major roads
- Zoned Industrial – Ideal for a wide range of industrial and commercial uses
- Prominent Building Facade Signage – Offers excellent visibility with the opportunity for future tenants to display their company name in a prime, high-traffic location in Plymouth, enhancing brand exposure and local presence
- Flexible Usage Potential – Perfect for outdoor fleet parking, material storage, or small-scale industrial operations
- Just Under 1 Acre – Versatile outdoor space, perfect for business operations requiring yard or equipment storage
- Excellent for Contractors – Great opportunity for construction companies, landscaping businesses, logistics operators, or equipment rental/storage

The information provided herein along with any attachment(s) was obtained from sources believed to be reliable, however, Friedman Real Estate makes no guarantees, warranties, or representations as to the completeness or accuracy of such information and legal counsel is advised. All information provided is subject to verification and no liability for reliance on such information or errors or omissions is assumed. The presentation of this property is submitted subject to errors, omissions, change of price or conditions, prior sale or lease, or withdrawal without notice. Copyright © 2025 Friedman Real Estate. All rights reserved.

FOR MORE INFORMATION PLEASE CONTACT:



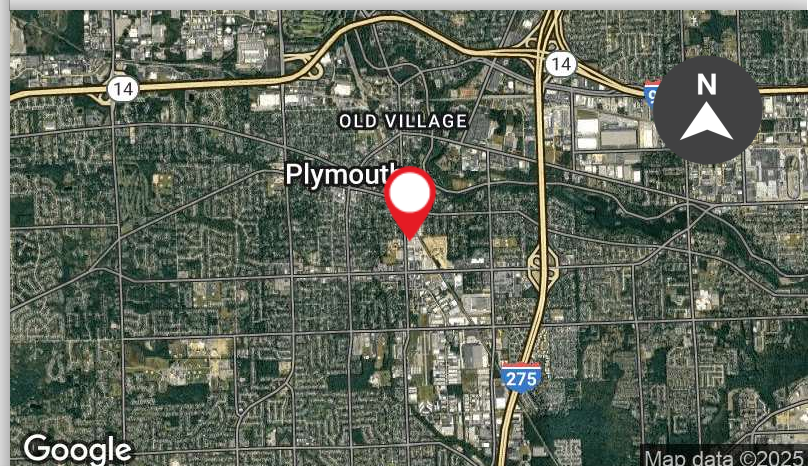
**RYLEE BATES**  
rylee.bates@freg.com



**ROBERT GAGNIUK**  
robert.gagniuk@freg.com

**248.848.3526**

**eCODE 372**





## PLYMOUTH INDUSTRIAL YARD & OFFICE - 987 S. MILL ST.

### PROPERTY **INFORMATION**

#### HIGHLIGHTS

|              |          |
|--------------|----------|
| Building SF: | 3,500 SF |
| County:      | Wayne    |

#### SITE

|                |                    |
|----------------|--------------------|
| Land (acres):  | 0.93               |
| Parcel Number: | 78-060-99-0019-000 |
| Zoning:        | Industrial - IND   |

#### GENERAL

|                 |         |
|-----------------|---------|
| Parking Spaces: | 10      |
| Parking Ratio:  | 3.5     |
| Parking Type:   | Surface |

#### BUILDING INFORMATION

|                 |                   |
|-----------------|-------------------|
| Type:           | Industrial/Office |
| Year Built:     | 1956              |
| Year Renovated: | 2023              |
| Stories:        | 1                 |



FOR MORE INFORMATION **PLEASE CONTACT:**



**RYLEE BATES**  
rylee.bates@freg.com



**ROBERT GAGNIUK**  
robert.gagniuk@freg.com

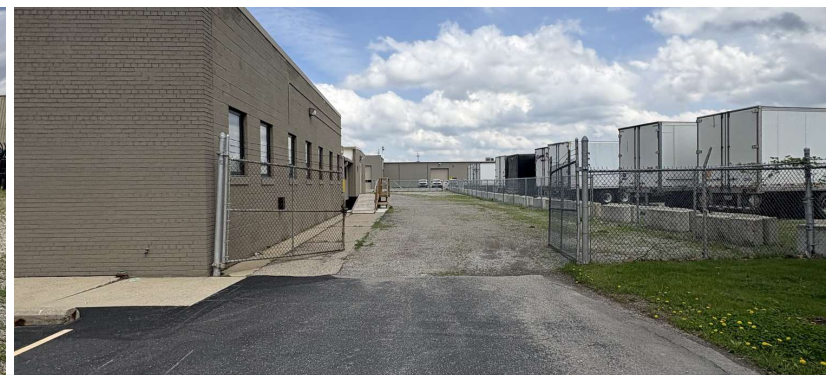


## PLYMOUTH INDUSTRIAL YARD & OFFICE - 987 S. MILL ST. PROPERTY **AVAILABILITY**



### AVAILABLE SUITES

| SPACE     | SPACE USE         | LEASE RATE    | LEASE TYPE                | SIZE (SF) |
|-----------|-------------------|---------------|---------------------------|-----------|
| Suite 101 | Industrial/Office | \$17.00 SF/yr | Modified Gross + Electric | 3,500 SF  |

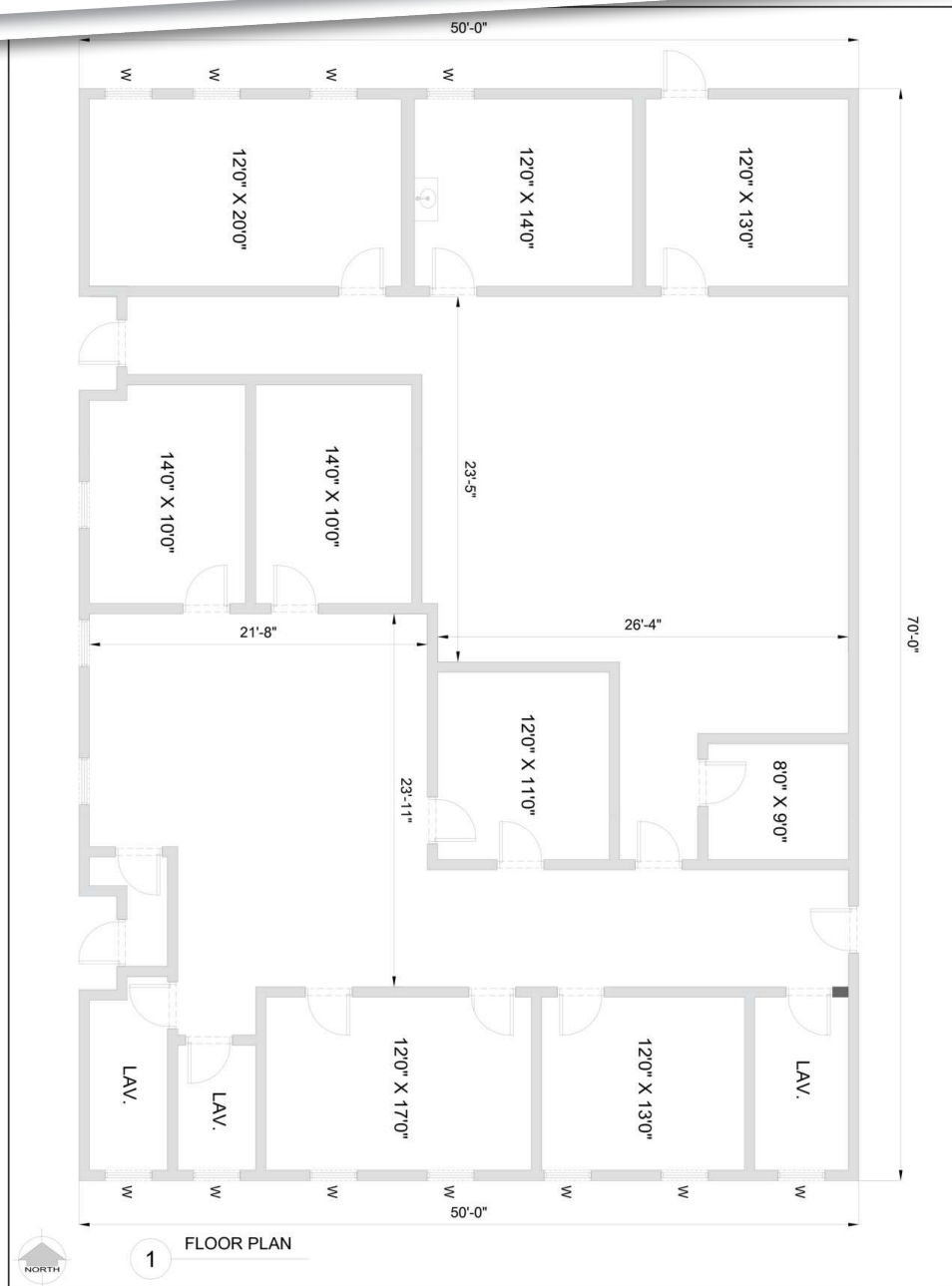




**PLYMOUTH INDUSTRIAL YARD & OFFICE - 987 S. MILL ST.**  
**PROPERTY PHOTOS**



# PLYMOUTH INDUSTRIAL YARD & OFFICE - 987 S. MILL ST. PROPERTY **FLOOR PLAN**



**A0-1**  
FLOOR PLAN

**FORESITE**  
PROPERTIES

987 S. MILL ST.  
PLYMOUTH MICHIGAN

**NOTE:**

ALL DIMENSIONS ARE APPROXIMATED.  
IF PRECISE MEASUREMENTS ARE REQUIRED YOU SHOULD PERFORM YOUR OWN SURVEY.



