

# I-75 SOUTH INDUSTRIAL PARK 20± ACRE DEVELOPMENT SITE



**7231 NOWELL ROAD SOUTH  
MACON, BIBB COUNTY, GEORGIA 31216**

**DEIDRA STEWART  
EXCLUSIVE AGENT**

**478.508.2652  
DEIDRA@CBCGEORGIA.COM**

**990 RIVERSIDE DRIVE  
MACON, GA 31201**

**REDUCED SALES PRICE:  
\$75,000/PER ACRE**



**COLDWELL BANKER  
COMMERCIAL**  
EBERHARDT & BARRY

©2026 Coldwell Banker. All Rights Reserved. Coldwell Banker Commercial® and the Coldwell Banker Commercial logo are trademarks of Coldwell Banker Real Estate LLC. The Coldwell Banker® System is comprised of company owned offices which are owned by a subsidiary of Anywhere Advisors LLC and franchised offices which are independently owned and operated. The Coldwell Banker System fully supports the principles of the Equal Opportunity Act. The information provided herein is deemed reliable, but it is not guaranteed to be accurate or complete, and it should not be relied upon as such. The information herein should be independently verified before any person enters into a transaction based upon it.

Revised 3/11/26

# PROPERTY OVERVIEW

7231 NOWELL ROAD SOUTH  
MACON, BIBB COUNTY, GEORGIA 31216

## LOCATION OVERVIEW

- I-75 South Industrial Park is a fast growing industry in the center of Georgia
- Adjacent to the I-75 exit ramp providing a great location logistically
- South of the 1,000,000 square foot Amazon Distribution Center
- Excellent location for industrial facility, hotel, truck stop or apartment complex
- 180 Miles from the Port of Savannah
- 77 Miles from the Hartsfield International Airport



## PROPERTY OVERVIEW

LOT SIZE	20.5± /Acres
FRONTAGE	1,400'± on Interstate 75, Northbound
PARCEL	K014-0015
TOPO	Level; wooded
UTILITIES	All utilities on Nowell Road
ZONED	• Agricultural • Light Industrial and Commercial north of property

**REDUCED SALES PRICE:**  
**\$75,000/PER ACRE**

**DEIDRA STEWART**  
478.508.2652 CELL  
DEIDRA@CBCGEORGIA.COM  
CBCMACON.COM

# ZONING MAP

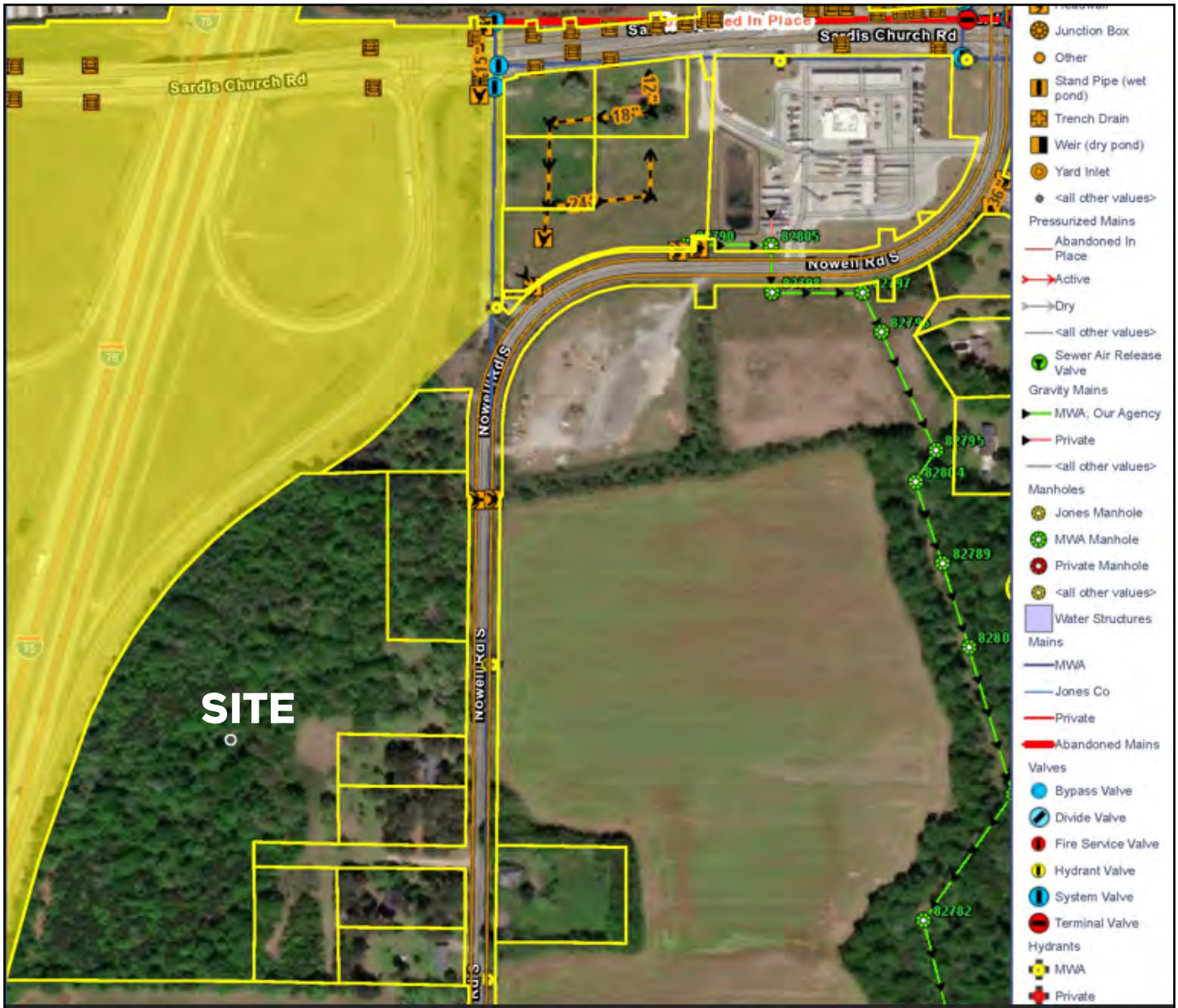
7231 NOWELL ROAD SOUTH  
MACON, BIBB COUNTY, GEORGIA 31216



DEIDRA STEWART  
478.508.2652 CELL  
DEIDRA@CBCGEORGIA.COM  
CBCMACON.COM



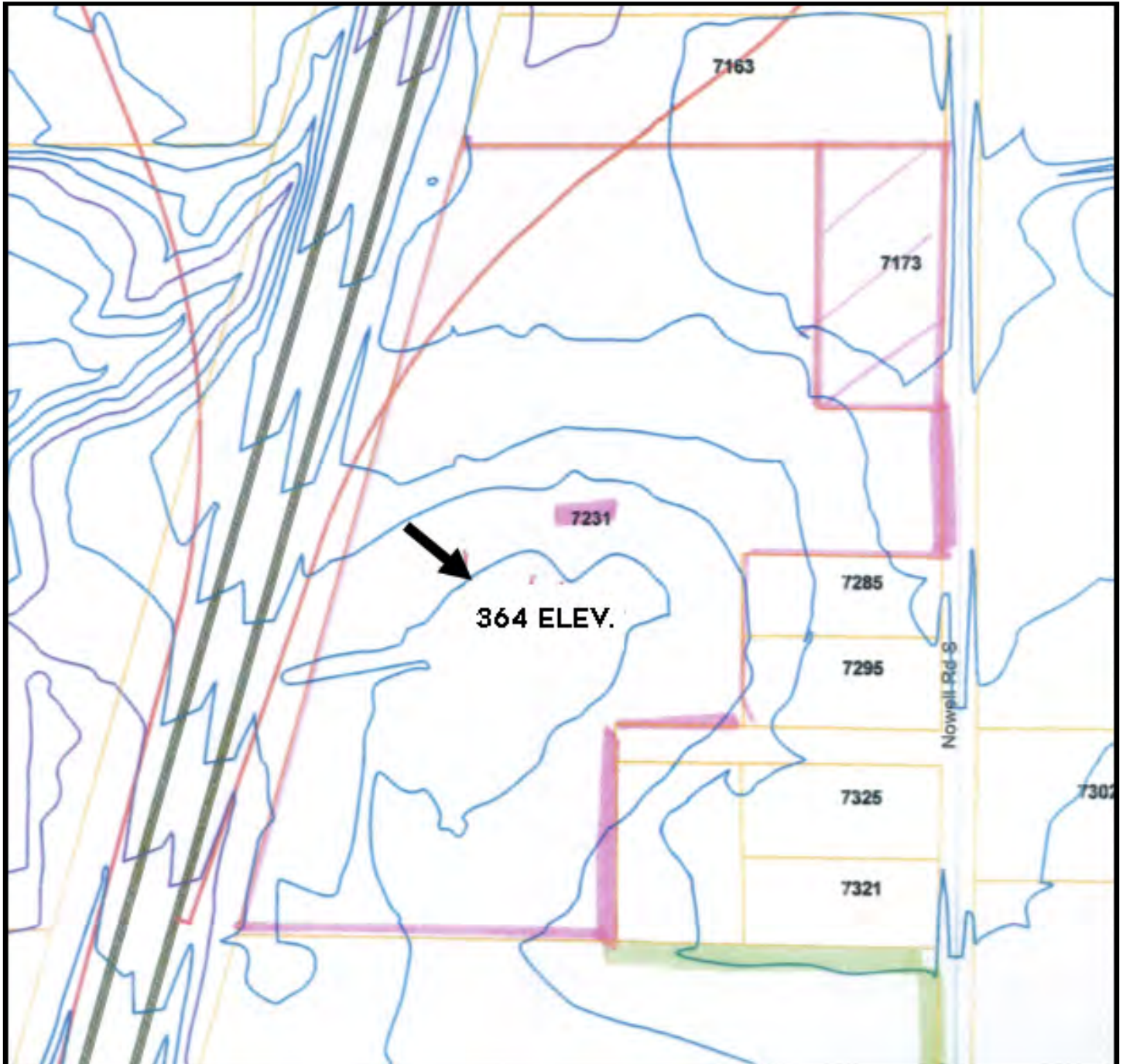
**COLDWELL BANKER  
COMMERCIAL**  
EBERHARDT & BARRY



**DEIDRA STEWART**  
 478.508.2652 CELL  
 DEIDRA@CBCGEORGIA.COM  
 CBCMACON.COM

# TOPOGRAPHIC MAP

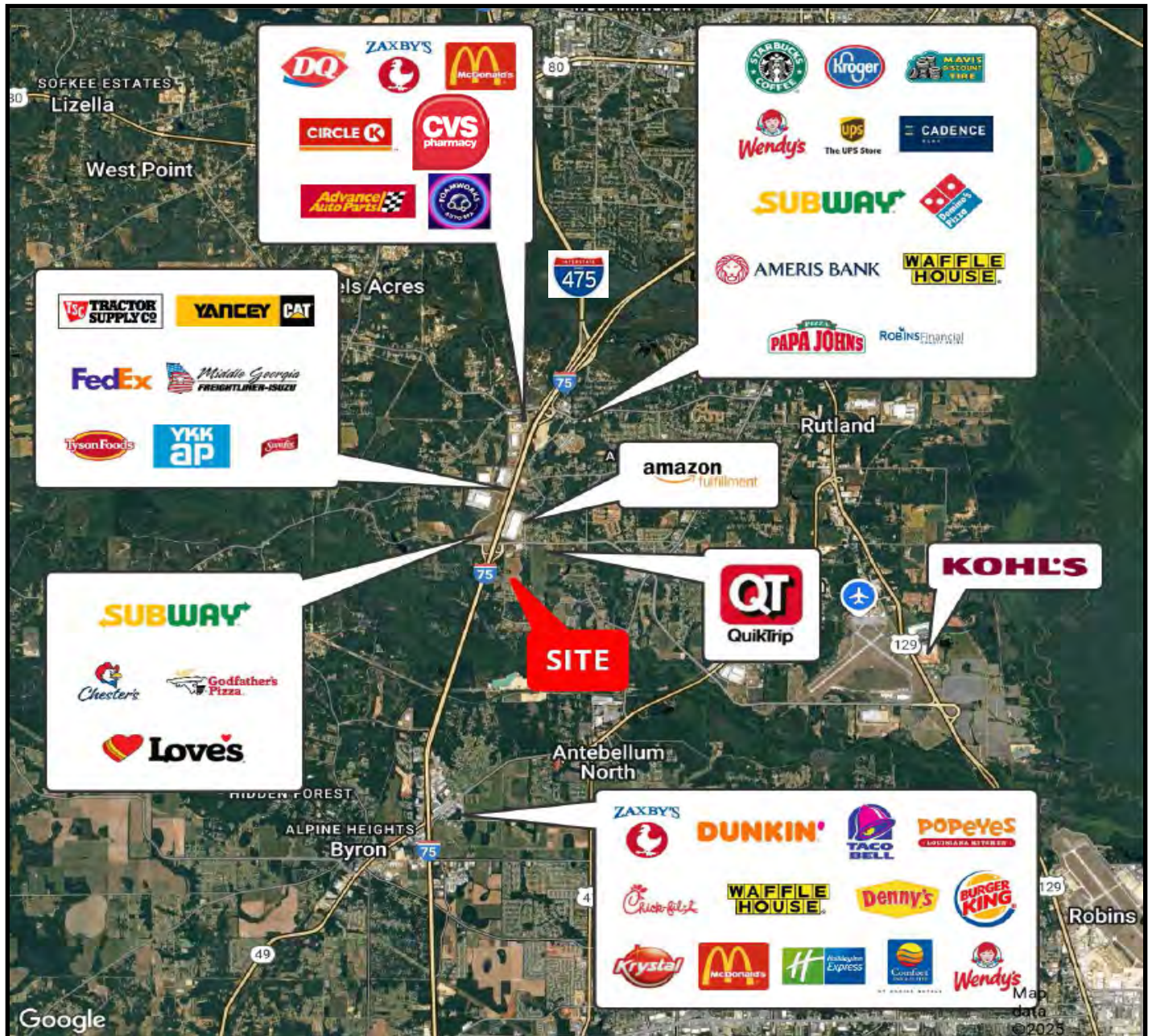
7231 NOWELL ROAD SOUTH  
MACON, BIBB COUNTY, GEORGIA 31216



DEIDRA STEWART  
478.508.2652 CELL  
DEIDRA@CBCGEORGIA.COM  
CBCMACON.COM



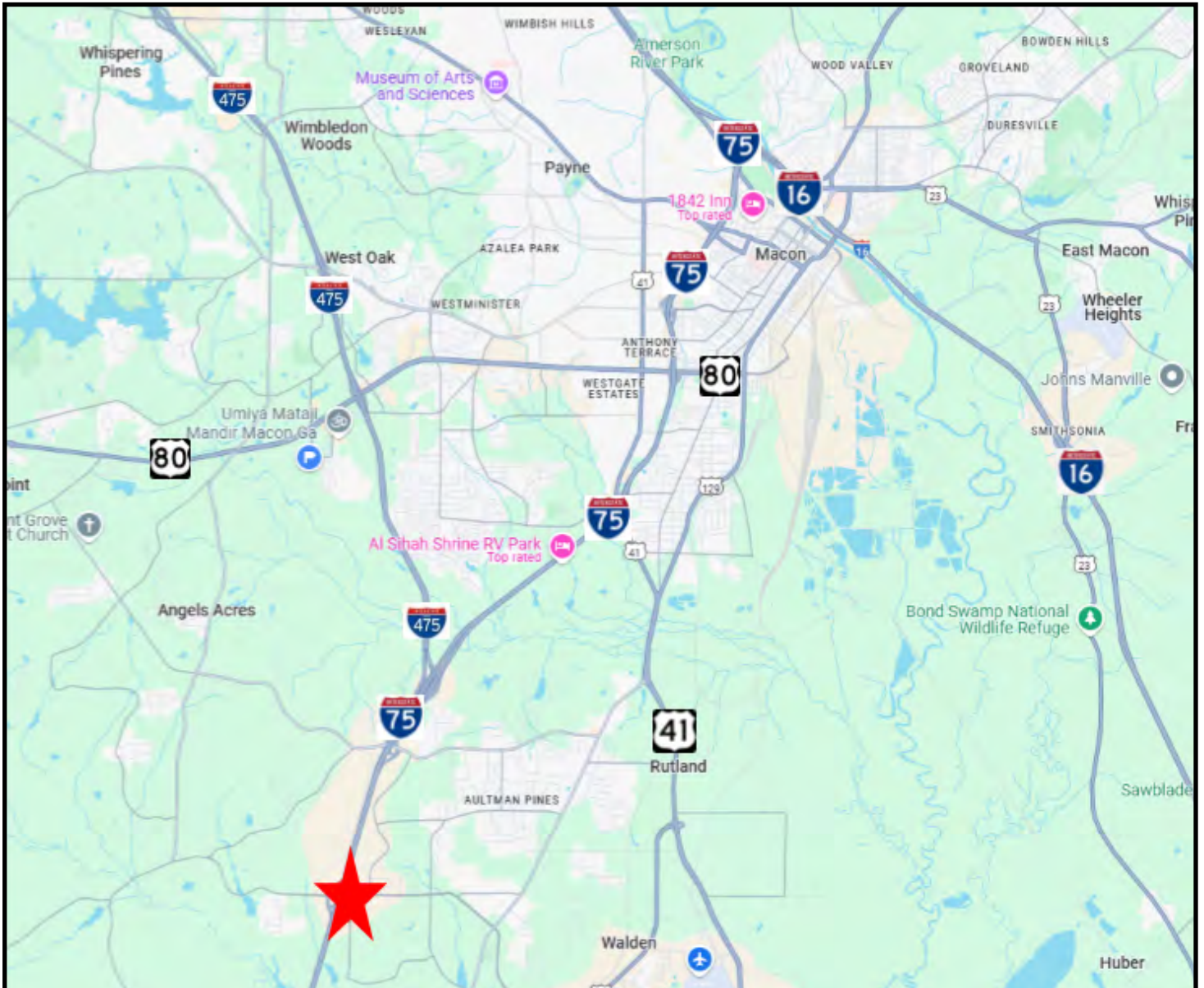
**COLDWELL BANKER  
COMMERCIAL**  
EBERHARDT & BARRY



**DEIDRA STEWART**  
 478.508.2652 CELL  
 DEIDRA@CBCGEORGIA.COM  
 CBCMACON.COM

# LOCATION MAP

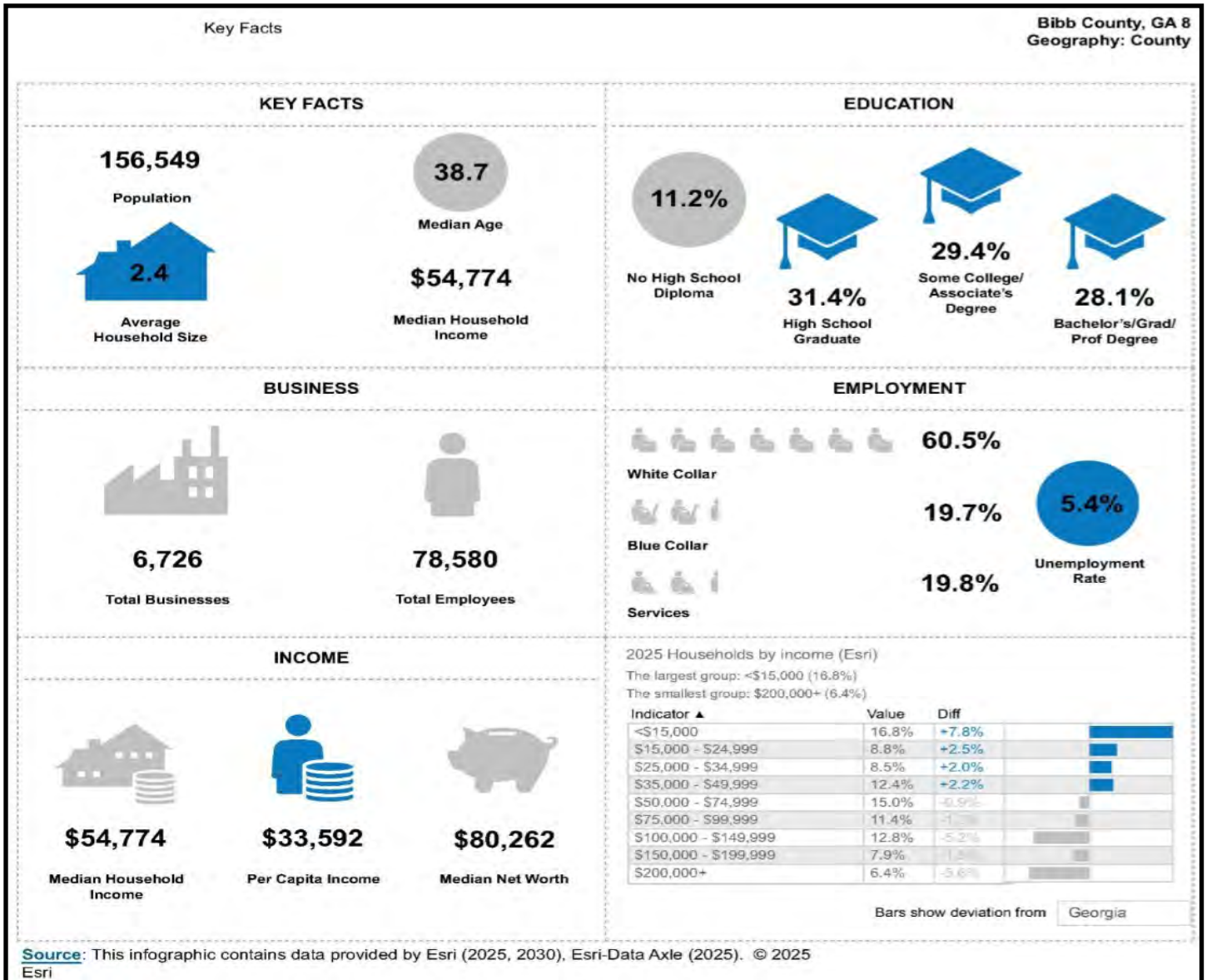
7231 NOWELL ROAD SOUTH  
MACON, BIBB COUNTY, GEORGIA 31216

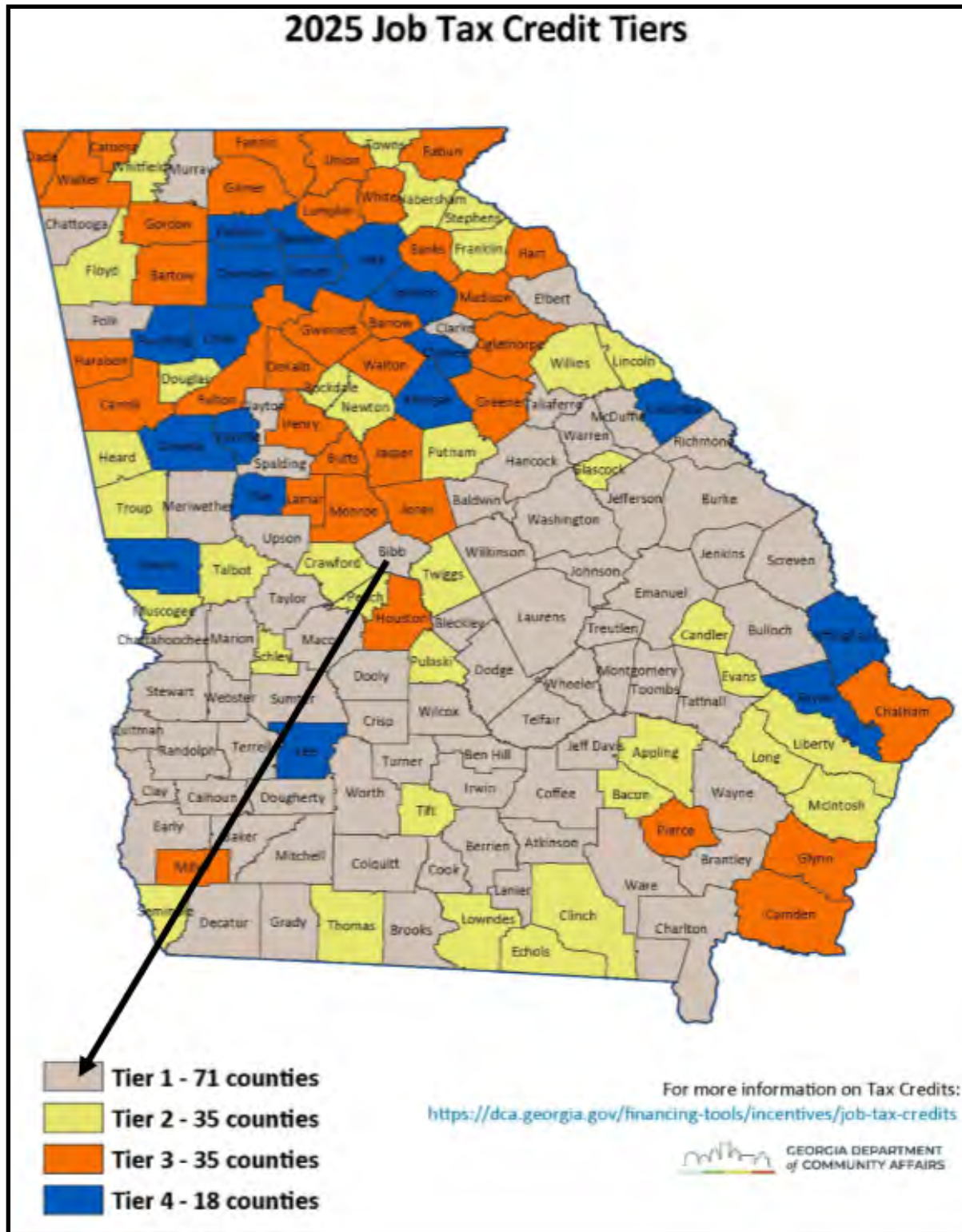


**DEIDRA STEWART**  
478.508.2652 CELL  
DEIDRA@CBCGEORGIA.COM  
CBCMACON.COM



**COLDWELL BANKER  
COMMERCIAL**  
EBERHARDT & BARRY





**DEIDRA STEWART**  
478.508.2652 CELL  
DEIDRA@CBCGEORGIA.COM  
CBCMACON.COM