

OFFICE  
LEASE

115,036 RSF

CLASS A  
OFFICE SPACE

RECENTLY  
COMPLETED \$3M  
COMMON AREA  
RENOVATIONS



TRANSWESTERN

REAL ESTATE  
SERVICES

# 4200 South Hulen

Fort Worth, TX 76109



GROUND FLOOR SPACE AVAILABLE



## Leasing Information:

**Whit Kelly**

817.259.3504

[whit.kelly@transwestern.com](mailto:whit.kelly@transwestern.com)

**Gavin Behr**

817.259.3549

[gavin.behr@transwestern.com](mailto:gavin.behr@transwestern.com)

The information provided herein was obtained from sources believed reliable; however, Transwestern makes no guarantees, warranties or representations as to the completeness of accuracy thereof. The presentation of this property is submitted subject to errors, omissions, change of price or conditions, prior to sale or lease, or withdrawal without notice. Copyright © 2024 Transwestern.

# 4200 South Hulen

Fort Worth, TX 76109



REAL ESTATE  
SERVICES

## SIZE:

- 115,036 Rentable Square Feet

## OWNERSHIP/MANAGEMENT:

- Owner occupied; On-site management

## PARKING:

- 3.9/1,000 Rentable Square Feet
- Covered reserved parking available

## LOCATION:

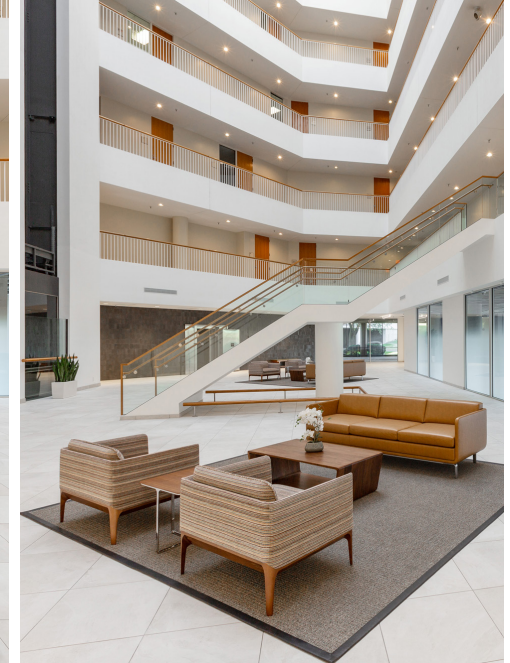
- Easy access to I-20 and Chisholm Trail Parkway

## GROUND FLOOR:

- +/- 2,000 SF security vault
- Tenant Lounge
- Specialty Vending Station

## WALKABLE AMENITIES:

- Sprouts Farmers Market
- La Madeleine
- Thai Select
- Tropical Smoothie Cafe
- Texas Roadhouse
- Ninja Sushi and Grill
- The Original Pancake House
- Olive Garden



## LEASING OPPORTUNITIES:

\*DIVISIBLE

- Suite 100: 2,754 RSF
- Suite 101: 2,756 RSF
- Suite 102: 1,629 RS
- Suite 103: 1,629 RSF
- Suite 104: 1,628 RSF
- Suite 220: 1,872 RSF
- Suite 240: 3,005 RSF\*
- Suite 300: 3,323 RSF
- Suite 301: 3,323 RSF
- Suite 302: 3,323 RSF
- Suite 303: 3,323 RSF
- Suite 304: 3,323 RSF\*
- Suite 305: 3,323 RSF
- Suite 325: 2,957 RSF\*
- Suite 340: 3,323 RSF
- Suite 400: 1,291 RSF
- Suite 412: 2,124 RSF
- Suite 413: 2,124 RSF
- Suite 414: 2,124 RSF
- Suite 415: 2,124 RSF
- Suite 416: 2,124 RSF
- Suite 417: 2,124 RSF
- Suite 418: 2,124 RSF
- Suite 419: 2,124 RSF
- Suite 420: 2,124 RSF
- Suite 421: 2,124 RSF
- Suite 422: 2,124 RSF
- Suite 423: 2,124 RSF
- Suite 424: 2,124 RSF
- Suite 425: 2,124 RSF
- Suite 426: 2,124 RSF
- Suite 427: 2,124 RSF
- Suite 428: 2,124 RSF
- Suite 429: 2,124 RSF
- Suite 430: 2,124 RSF
- Suite 431: 2,124 RSF
- Suite 432: 2,124 RSF
- Suite 433: 2,124 RSF
- Suite 434: 2,124 RSF
- Suite 435: 2,124 RSF
- Suite 436: 2,124 RSF
- Suite 437: 2,124 RSF
- Suite 438: 2,124 RSF
- Suite 439: 2,124 RSF
- Suite 440: 2,124 RSF
- Suite 441: 2,124 RSF
- Suite 442: 2,124 RSF
- Suite 443: 2,124 RSF
- Suite 444: 2,124 RSF
- Suite 445: 2,124 RSF
- Suite 446: 2,124 RSF
- Suite 447: 2,124 RSF
- Suite 448: 2,124 RSF
- Suite 449: 2,124 RSF
- Suite 450: 2,124 RSF
- Suite 451: 2,124 RSF
- Suite 452: 2,124 RSF
- Suite 453: 2,124 RSF
- Suite 454: 2,124 RSF
- Suite 455: 2,124 RSF
- Suite 456: 2,124 RSF
- Suite 457: 2,124 RSF
- Suite 458: 2,124 RSF
- Suite 459: 2,124 RSF
- Suite 460: 2,124 RSF
- Suite 461: 2,124 RSF
- Suite 462: 2,124 RSF
- Suite 463: 2,124 RSF
- Suite 464: 2,124 RSF
- Suite 465: 2,124 RSF
- Suite 466: 2,124 RSF
- Suite 467: 2,124 RSF
- Suite 468: 2,124 RSF
- Suite 469: 2,124 RSF
- Suite 470: 2,124 RSF
- Suite 471: 2,124 RSF
- Suite 472: 2,124 RSF
- Suite 473: 2,124 RSF
- Suite 474: 2,124 RSF
- Suite 475: 2,124 RSF
- Suite 476: 2,124 RSF
- Suite 477: 2,124 RSF
- Suite 478: 2,124 RSF
- Suite 479: 2,124 RSF
- Suite 480: 2,124 RSF
- Suite 481: 2,124 RSF
- Suite 482: 2,124 RSF
- Suite 483: 2,124 RSF
- Suite 484: 2,124 RSF
- Suite 485: 2,124 RSF
- Suite 486: 2,124 RSF
- Suite 487: 2,124 RSF
- Suite 488: 2,124 RSF
- Suite 489: 2,124 RSF
- Suite 490: 2,124 RSF
- Suite 491: 2,124 RSF
- Suite 492: 2,124 RSF
- Suite 493: 2,124 RSF
- Suite 494: 2,124 RSF
- Suite 495: 2,124 RSF
- Suite 496: 2,124 RSF
- Suite 497: 2,124 RSF
- Suite 498: 2,124 RSF
- Suite 499: 2,124 RSF
- Suite 500: 2,124 RSF
- Suite 501: 2,124 RSF
- Suite 502: 874 RSF
- Suite 510: 2,124 RSF
- Suite 511: 2,124 RSF
- Suite 512: 2,124 RSF
- Suite 513: 2,124 RSF
- Suite 514: 2,124 RSF
- Suite 515: 2,124 RSF
- Suite 516: 2,124 RSF
- Suite 517: 2,124 RSF
- Suite 518: 2,124 RSF
- Suite 519: 2,124 RSF
- Suite 520: 2,124 RSF
- Suite 521: 2,124 RSF
- Suite 522: 2,124 RSF
- Suite 523: 2,124 RSF
- Suite 524: 2,124 RSF
- Suite 525: 2,124 RSF
- Suite 526: 2,124 RSF
- Suite 527: 2,124 RSF
- Suite 528: 2,124 RSF
- Suite 529: 2,124 RSF
- Suite 530: 2,124 RSF
- Suite 531: 2,124 RSF
- Suite 532: 2,124 RSF
- Suite 533: 2,124 RSF
- Suite 534: 2,124 RSF
- Suite 535: 2,124 RSF
- Suite 536: 2,124 RSF
- Suite 537: 2,124 RSF
- Suite 538: 2,124 RSF
- Suite 539: 2,124 RSF
- Suite 540: 2,124 RSF
- Suite 541: 2,124 RSF
- Suite 542: 2,124 RSF
- Suite 543: 2,124 RSF
- Suite 544: 2,124 RSF
- Suite 545: 2,124 RSF
- Suite 546: 2,124 RSF
- Suite 547: 2,124 RSF
- Suite 548: 2,124 RSF
- Suite 549: 2,124 RSF
- Suite 550: 2,124 RSF
- Suite 551: 2,124 RSF
- Suite 552: 2,124 RSF
- Suite 553: 2,124 RSF
- Suite 554: 2,124 RSF
- Suite 555: 2,124 RSF
- Suite 556: 2,124 RSF
- Suite 557: 2,124 RSF
- Suite 558: 2,124 RSF
- Suite 559: 2,124 RSF
- Suite 560: 2,124 RSF
- Suite 561: 2,124 RSF
- Suite 562: 2,124 RSF
- Suite 563: 2,124 RSF
- Suite 564: 2,124 RSF
- Suite 565: 2,124 RSF
- Suite 566: 2,124 RSF
- Suite 567: 2,124 RSF
- Suite 568: 2,124 RSF
- Suite 569: 2,124 RSF
- Suite 570: 2,124 RSF
- Suite 571: 2,124 RSF
- Suite 572: 2,124 RSF
- Suite 573: 2,124 RSF
- Suite 574: 2,124 RSF
- Suite 575: 2,124 RSF
- Suite 576: 2,124 RSF
- Suite 577: 2,124 RSF
- Suite 578: 2,124 RSF
- Suite 579: 2,124 RSF
- Suite 580: 2,124 RSF
- Suite 581: 2,124 RSF
- Suite 582: 2,124 RSF
- Suite 583: 2,124 RSF
- Suite 584: 2,124 RSF
- Suite 585: 2,124 RSF
- Suite 586: 2,124 RSF
- Suite 587: 2,124 RSF
- Suite 588: 2,124 RSF
- Suite 589: 2,124 RSF
- Suite 590: 2,124 RSF
- Suite 591: 2,124 RSF
- Suite 592: 2,124 RSF
- Suite 593: 2,124 RSF
- Suite 594: 2,124 RSF
- Suite 595: 2,124 RSF
- Suite 596: 2,124 RSF
- Suite 597: 2,124 RSF
- Suite 598: 2,124 RSF
- Suite 599: 2,124 RSF
- Suite 600: 2,124 RSF

## Leasing Information:

**Whit Kelly**  
817.259.3504  
whit.kelly@transwestern.com

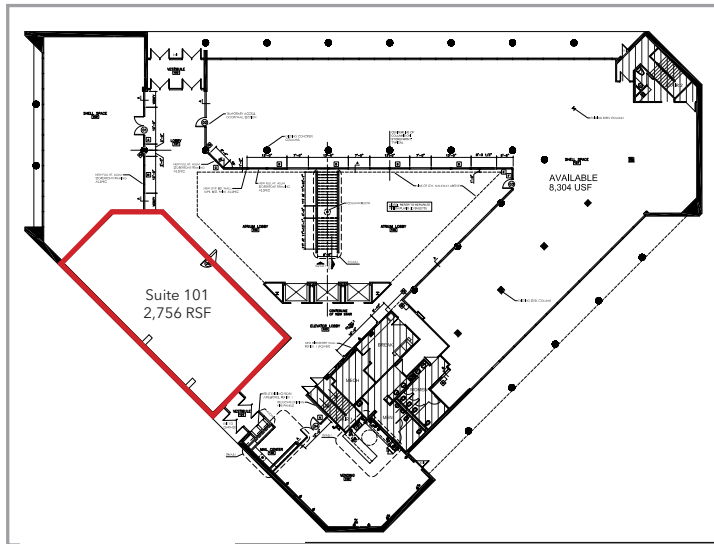
**Gavin Behr**  
817.259.3549  
gavin.behr@transwestern.com

The information provided herein was obtained from sources believed reliable; however, Transwestern makes no guarantees, warranties or representations as to the completeness of accuracy thereof. The presentation of this property is submitted subject to errors, omissions, change of price or conditions, prior to sale or lease, or withdrawal without notice. Copyright © 2024 Transwestern.

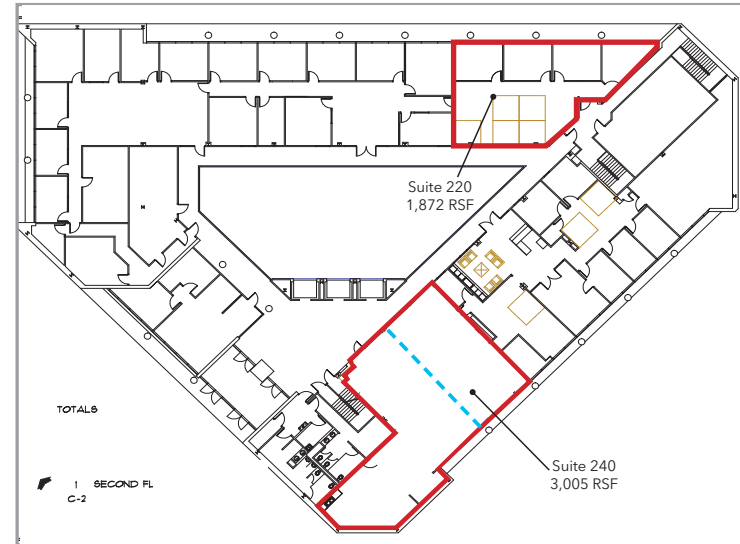
# 4200 South Hulen

Fort Worth, TX 76109

## SUITE 101 FLOOR PLAN



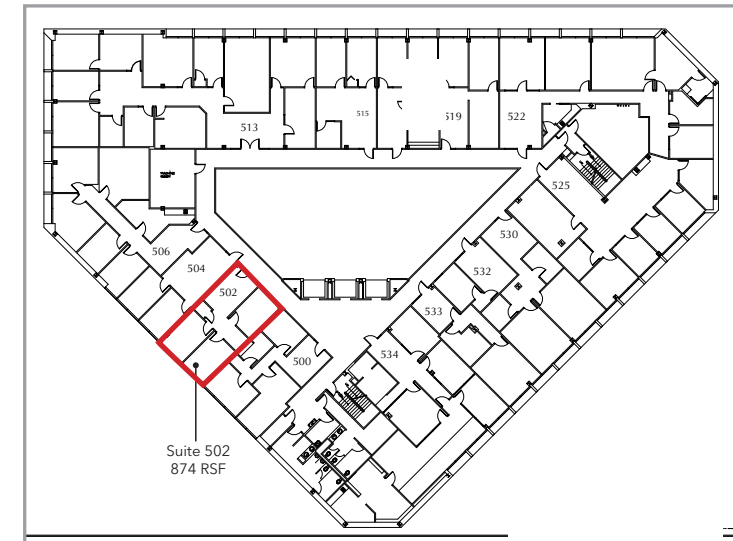
## SUITES 220 & 240 FLOOR PLAN



## SUITES 325 & 340 FLOOR PLAN



## SUITE 502 FLOOR PLAN





# Information About Brokerage Services - Fort Worth

Texas law requires all real estate license holders to give the following information about brokerage services to prospective buyers, tenants, sellers and landlords.

11-2-2015



### TYPES OF REAL ESTATE LICENSE HOLDERS:

- A **BROKER** is responsible for all brokerage activities, including acts performed by sales agents sponsored by the broker.
- A **SALES AGENT** must be sponsored by a broker and works with clients on behalf of the broker.

### A BROKER'S MINIMUM DUTIES REQUIRED BY LAW (A client is the person or party that the broker represents):

- Put the interests of the client above all others, including the broker's own interests;
- Inform the client of any material information about the property or transaction received by the broker;
- Answer the client's questions and present any offer to or counter-offer from the client; and
- Treat all parties to a real estate transaction honestly and fairly.

### A LICENSE HOLDER CAN REPRESENT A PARTY IN A REAL ESTATE TRANSACTION:

**AS AGENT FOR OWNER (SELLER/LANDLORD):** The broker becomes the property owner's agent through an agreement with the owner, usually in a written listing to sell or property management agreement. An owner's agent must perform the broker's minimum duties above and must inform the owner of any material information about the property or transaction known by the agent, including information disclosed to the agent or subagent by the buyer or buyer's agent.

**AS AGENT FOR BUYER/TENANT:** The broker becomes the buyer/tenant's agent by agreeing to represent the buyer, usually through a written representation agreement. A buyer's agent must perform the broker's minimum duties above and must inform the buyer of any material information about the property or transaction known by the agent, including information disclosed to the agent by the seller or seller's agent.

**AS AGENT FOR BOTH - INTERMEDIARY:** To act as an intermediary between the parties the broker must first obtain the written agreement of *each party* to the transaction. The written agreement must state who will pay the broker and, in conspicuous bold or underlined print, set forth the broker's obligations as an intermediary. A broker who acts as an intermediary:

- Must treat all parties to the transaction impartially and fairly;
- May, with the parties' written consent, appoint a different license holder associated with the broker to each party (owner and buyer) to communicate with, provide opinions and advice to, and carry out the instructions of each party to the transaction.
- Must not, unless specifically authorized in writing to do so by the party, disclose:
  - o that the owner will accept a price less than the written asking price;
  - o that the buyer/tenant will pay a price greater than the price submitted in a written offer; and
  - o any confidential information or any other information that a party specifically instructs the broker in writing not to disclose, unless required to do so by law.

**AS SUBAGENT:** A license holder acts as a subagent when aiding a buyer in a transaction without an agreement to represent the buyer. A subagent can assist the buyer but does not represent the buyer and must place the interests of the owner first.

### TO AVOID DISPUTES, ALL AGREEMENTS BETWEEN YOU AND A BROKER SHOULD BE IN WRITING AND CLEARLY ESTABLISH:

- The broker's duties and responsibilities to you, and your obligations under the representation agreement.
- Who will pay the broker for services provided to you, when payment will be made and how the payment will be calculated.

**LICENSE HOLDER CONTACT INFORMATION:** This notice is being provided for information purposes. It does not create an obligation for you to use the broker's services. Please acknowledge receipt of this notice below and retain a copy for your records.

**Willard Whitney Kelly**

Licensed Broker /Broker Firm Name or Primary Assumed Business Name

**406080**

License No.

**whit.kelly@transwestern.com**

Email

**817.877.4433**

Phone

Designated Broker of Firm

License No.

Email

Phone

Licensed Supervisor of Sales Agent/  
Associate

License No.

Email

Phone

Sales Agent/Associate's Name

License No.

Email

Phone

Buyer/Tenant/Seller/Landlord Initials \_\_\_\_\_ Date \_\_\_\_\_

Regulated by the Texas Real Estate Commission

Information available at [www.trec.texas.gov](http://www.trec.texas.gov)

IABS 1-0