



# For lease

Tropical Speedway Distribution Center

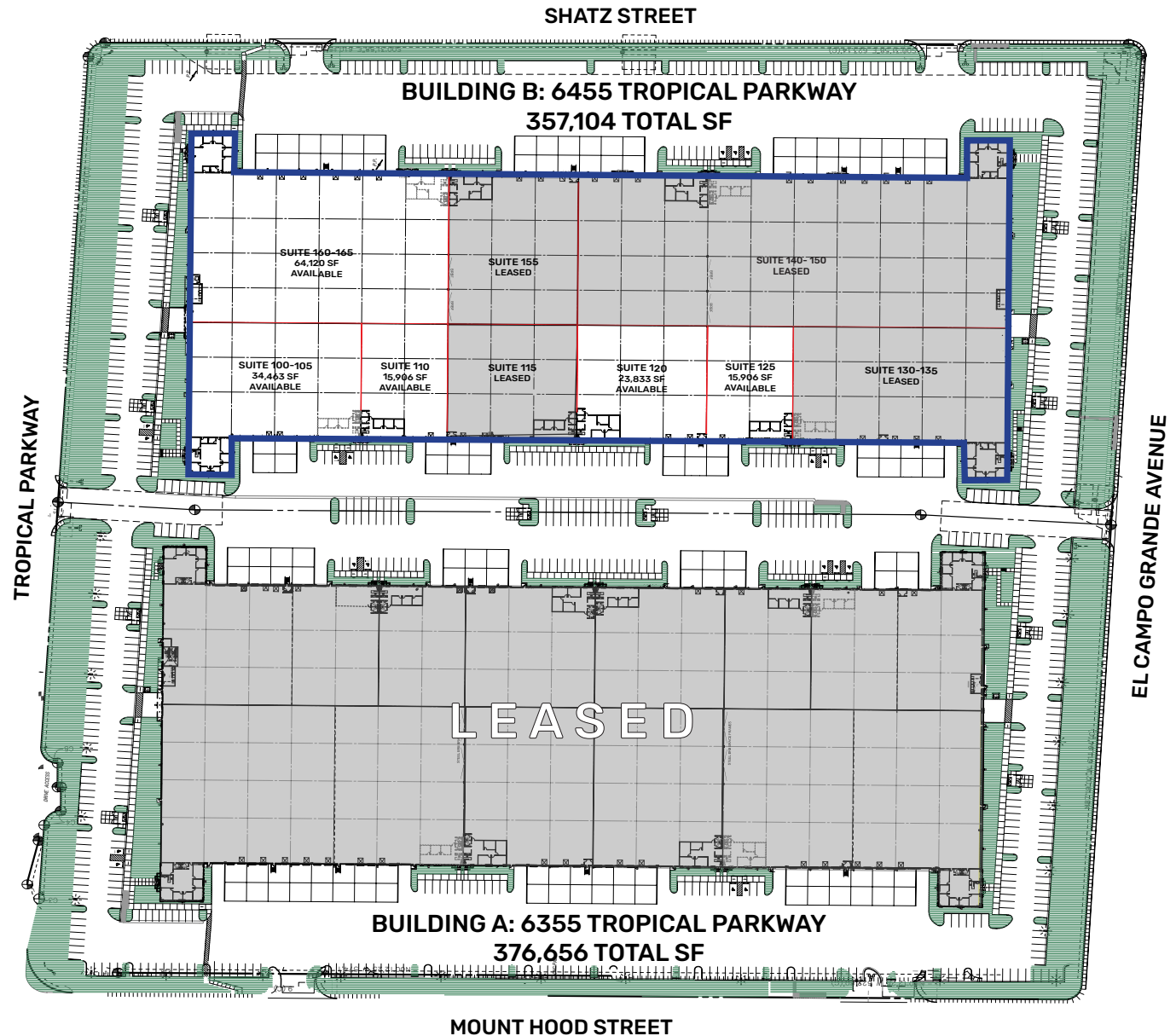
6455 East Tropical Parkway (Bldg. B)

North Las Vegas, Nevada 89115



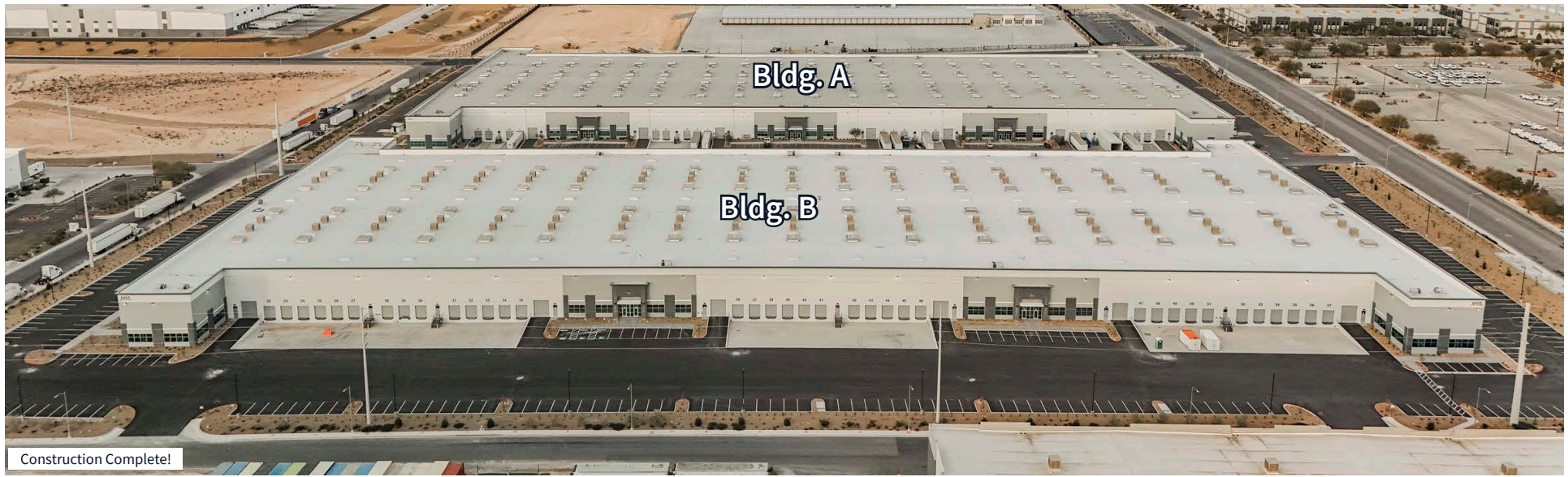
## Building B specifications

- ±357,104 total square feet
- Dock doors (9' x 10')
- Grade level doors (12' x 14')
- 50' x 50' column spacing, 60' x 50' speed bay
- 30,000 lb. pit levelers in loading docks (1-2 per suite) and edge of dock levelers in loading docks without pit levelers
- 32' clear height
- ±419 total parking spaces (1:1,000)
- 50' dock apron
- 150' minimum truck court
- 1% skylights
- R-38 roof insulation
- Class A, 4-ply built-up roof system
- 4,000 amps, 277/480V, 3-phase power (200 amps per units)
- ESFR fire sprinklers
- Zoned M-2 (North Las Vegas)



Tropical Speedway Distribution Center | 6455 East Tropical Parkway, North Las Vegas, Nevada 89115

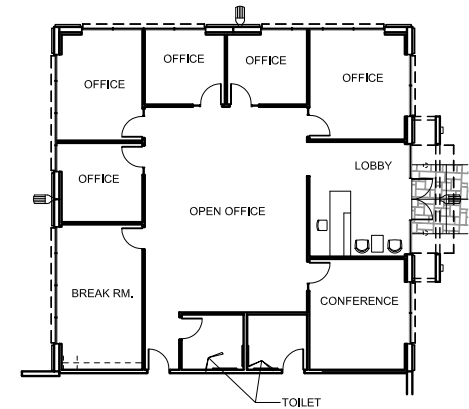
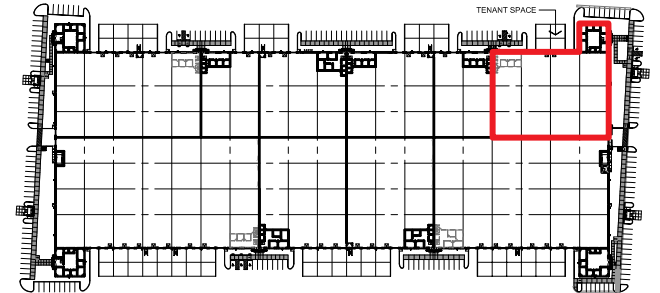
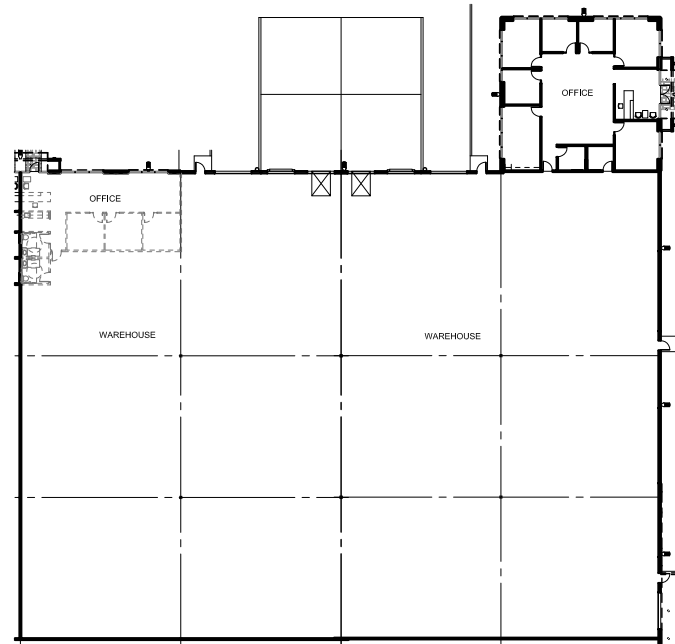
Unit	Total s.f.	Office s.f.	Warehouse s.f.	Clear height	Power	Loading/Doors	Rate	Cam	Monthly
100-105	34,463	2,600	31,863	32'	277/480V 3 Ph.	4 DH / 2 GL	Negotiable	\$0.229	Negotiable
110	15,906	1,449	14,457	32'	277/480V 3 Ph.	2 DH / 1 GL	Negotiable	\$0.229	Negotiable
120	23,833	1,790	22,043	32'	277/480V 3 Ph.	3 DH / 1 GL	Negotiable	\$0.229	Negotiable
125	15,906	1,449	14,457	32'	277/480V 3 Ph.	2 DH / 1 GL	Negotiable	\$0.229	Negotiable
160-165	64,120	2,600	61,520	32'	277/480V 3 Ph.	11 DH / 2 GL	Negotiable	\$0.229	Negotiable



# Floor plans

## Suite 100-105

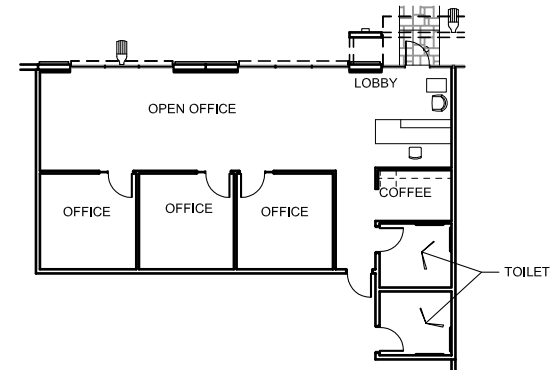
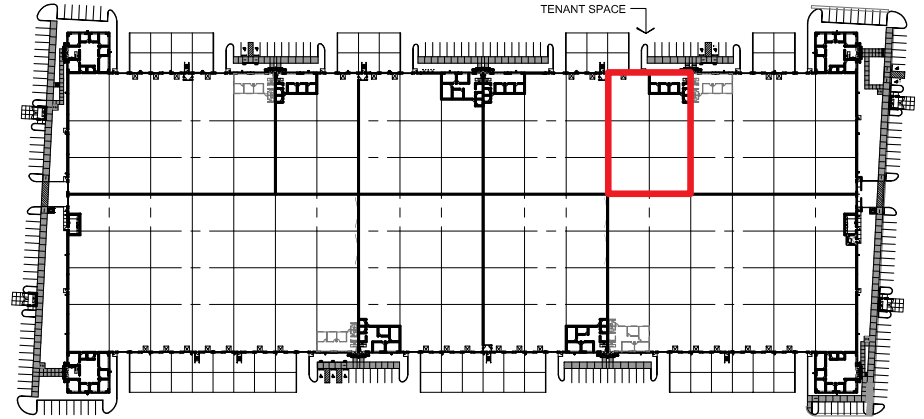
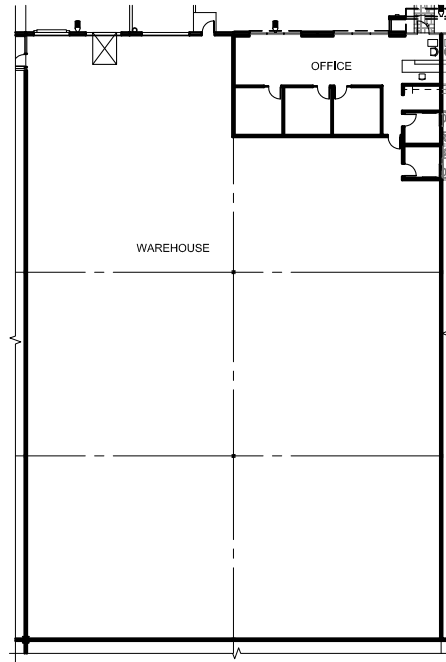
- 34,463 SF total
- 2,600 SF office
- 31,863 SF warehouse
- 32' clear height
- Four (4) dock high doors
- One (1) grade level door
- Rate: Negotiable
- CAM: \$0.229



# Floor plans

## Suite 110

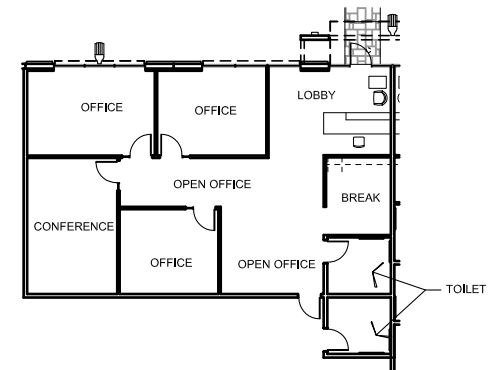
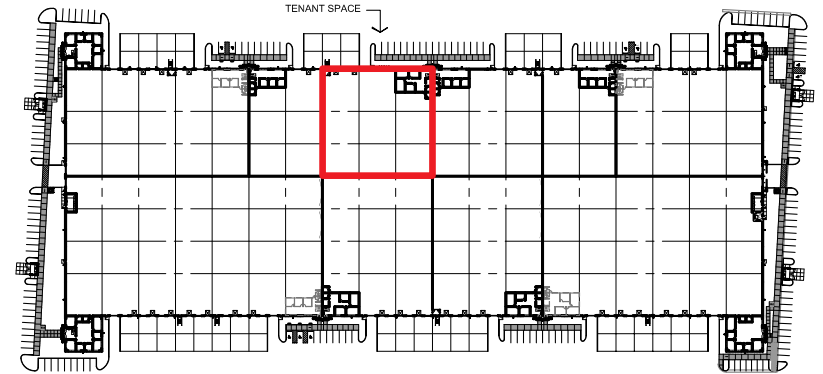
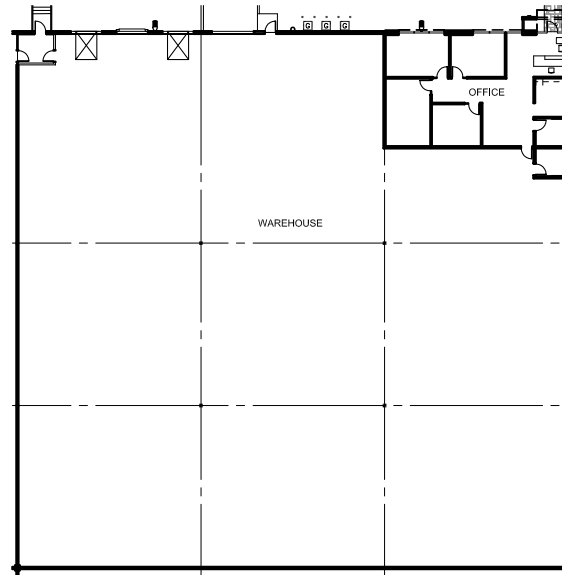
- 15,906 SF total
- 1,449 SF office
- 14,457 SF warehouse
- 32' clear height
- Two (2) dock high doors
- One (1) grade level door
- Rate: Negotiable
- CAM: \$0.229



# Floor plans

## Suite 120

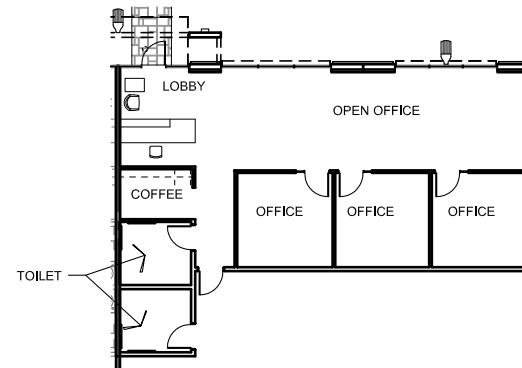
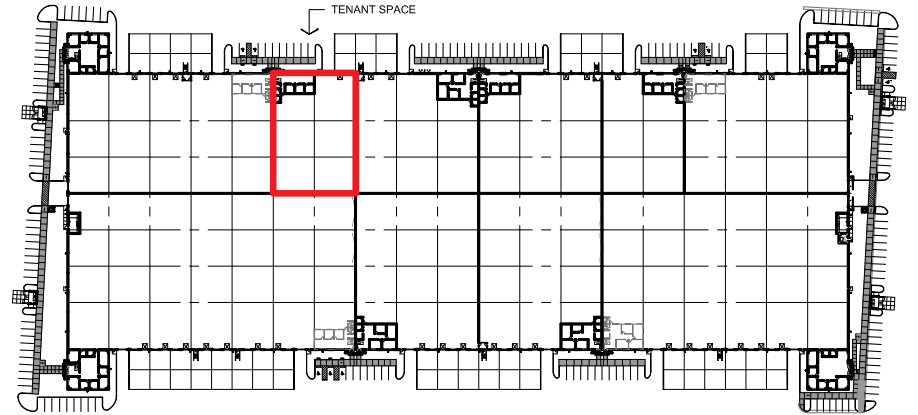
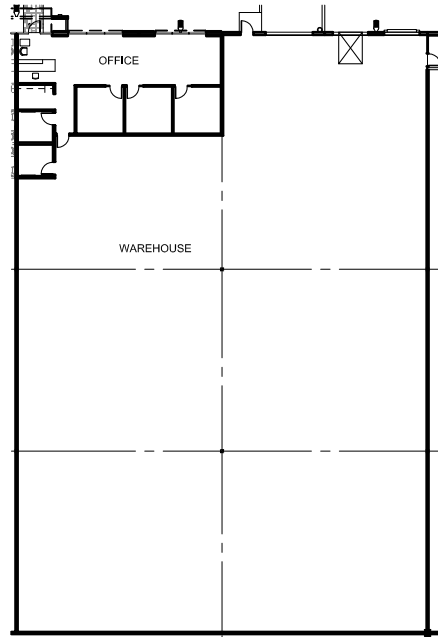
- 23,833 SF total
- 1,790 SF office
- 22,043 SF warehouse
- 32' clear height
- Three (3) dock high doors
- One (1) grade level door
- Rate: Negotiable
- CAM: \$0.229



# Floor plans

## Suite 125

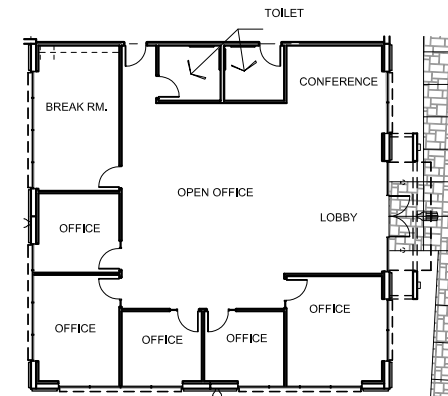
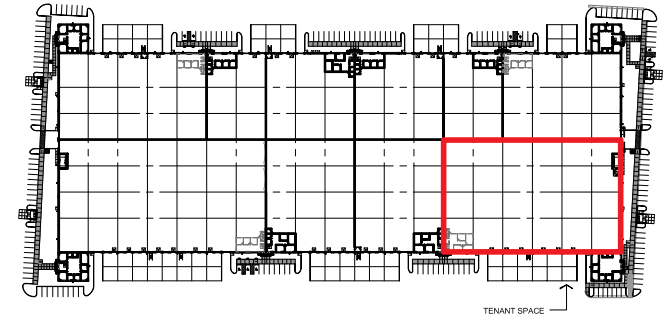
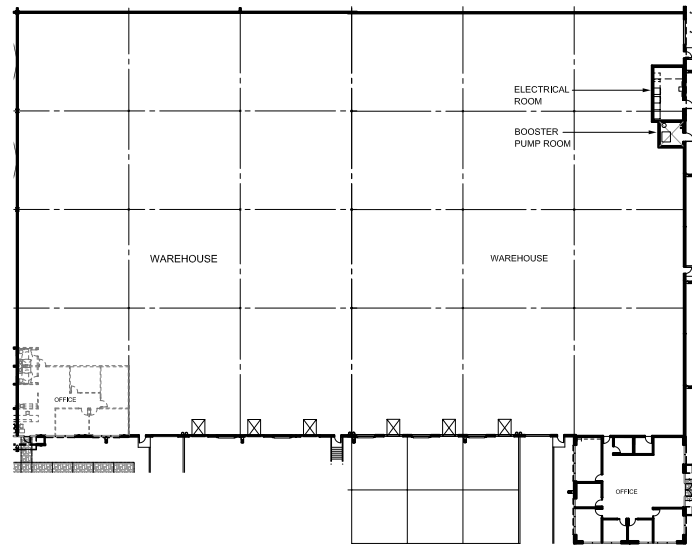
- 15,906 SF total
- 1,449 SF office
- 14,457 SF warehouse
- 32' clear height
- Two (2) dock high doors
- One (1) grade level door
- Rate: Negotiable
- CAM: \$0.229



# Floor plans

## Suite 160-165

- 64,120 SF total
- 2,600 SF office
- 61,520 SF warehouse
- 32' clear height
- Eleven (11) dock high doors
- Two (2) grade level doors
- Rate: Negotiable
- CAM: \$0.229



# Project and location

## Highlights

Conveniently located in the heart of the North Las Vegas Speedway submarket with immediate access to I-15 freeway via Speedway Boulevard and the Tropical Parkway Interchange. Close proximity to Harry Reid International Airport, I-15 & 215 freeways & less than a 20-minute drive to the Las Vegas Strip!



14.7 miles to the Las Vegas Strip



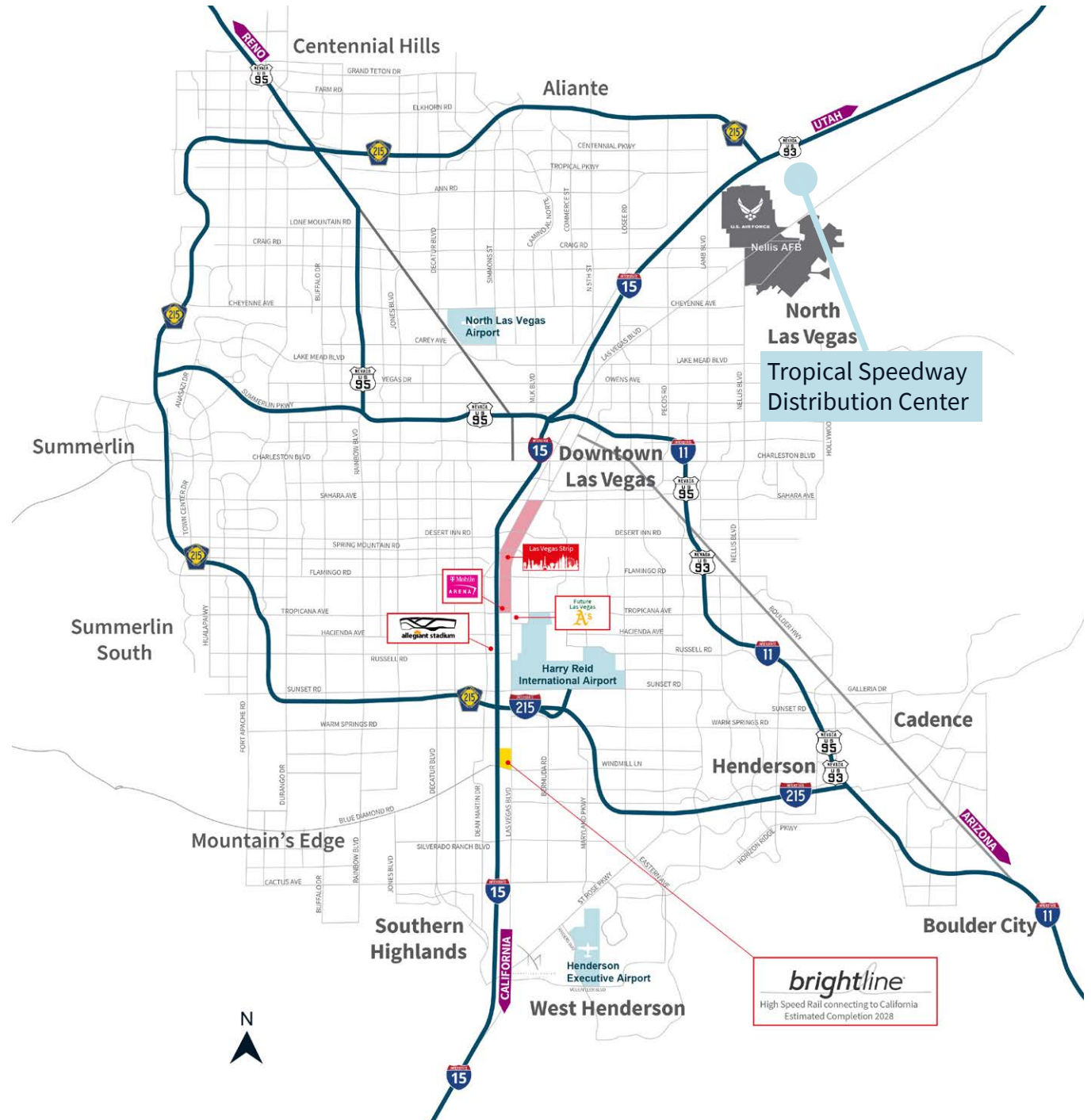
Less than a 20-minute drive to the Las Vegas Strip



18.4 miles to Harry Reid International Airport



17.1 miles to Allegiant Stadium







**Danny Leanos**  
Vice President  
+1 702 522 5008  
danny.leanos@jll.com  
NV Lic. #S.0191773

**Brayden Stockbauer**  
Associate  
+1 702 522 5114  
brayden.stockbauer@jll.com  
NV Lic. #S.0203930

**Jason Simon, SIOR**  
Executive Managing Director  
+1 702 522 5001  
jason.simon@jll.com  
NV Lic. # S.0045593

**Rob Lujan, SIOR, CCIM**  
Executive Managing Director  
+1 702 522 5002  
rob.lujan@jll.com  
NV Lic. # S.0051018