

1360 Redwood Way

Redwood Business Park

Petaluma | California

Unit C ±4,625 RSF

Office with Laboratory Space **FOR LEASE**

\$1.00/ RSF/Month, Gross - Year 1

\$1.35/ RSF/Month, Gross - Year 2

\$1.45/ RSF/Month, Gross - Year 3



JERRY SUYDERHOUD Senior Managing Director
jerry.suyderhoud@nrmk.com 415-526-7660 CA DRE #00633998

NEWMARK

unit C

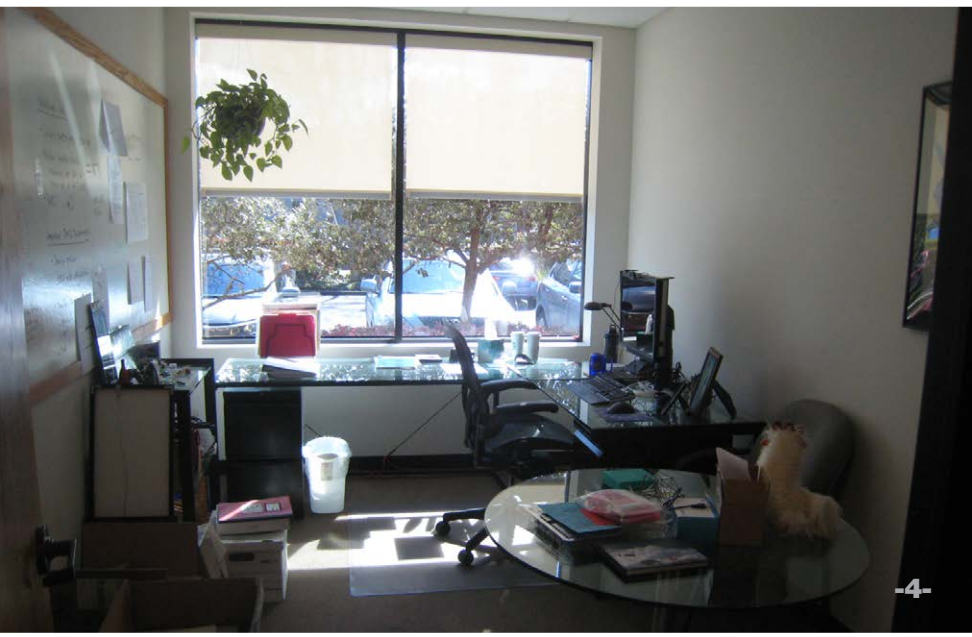
- ±4,625 RSF professional office with laboratory space
- \$1.00/RSF/month, gross - Year 1
- \$1.35/RSF/month, gross - Year 2
- \$1.45/RSF/month, gross - Year 3
- 4% increases after Year 3

- Utilities and internet are included
- Three entrances
- Shared common area restrooms plus en suite half bath
- Below market utilities (building has solar power)
- Conference room
- Furniture available
- Three private offices

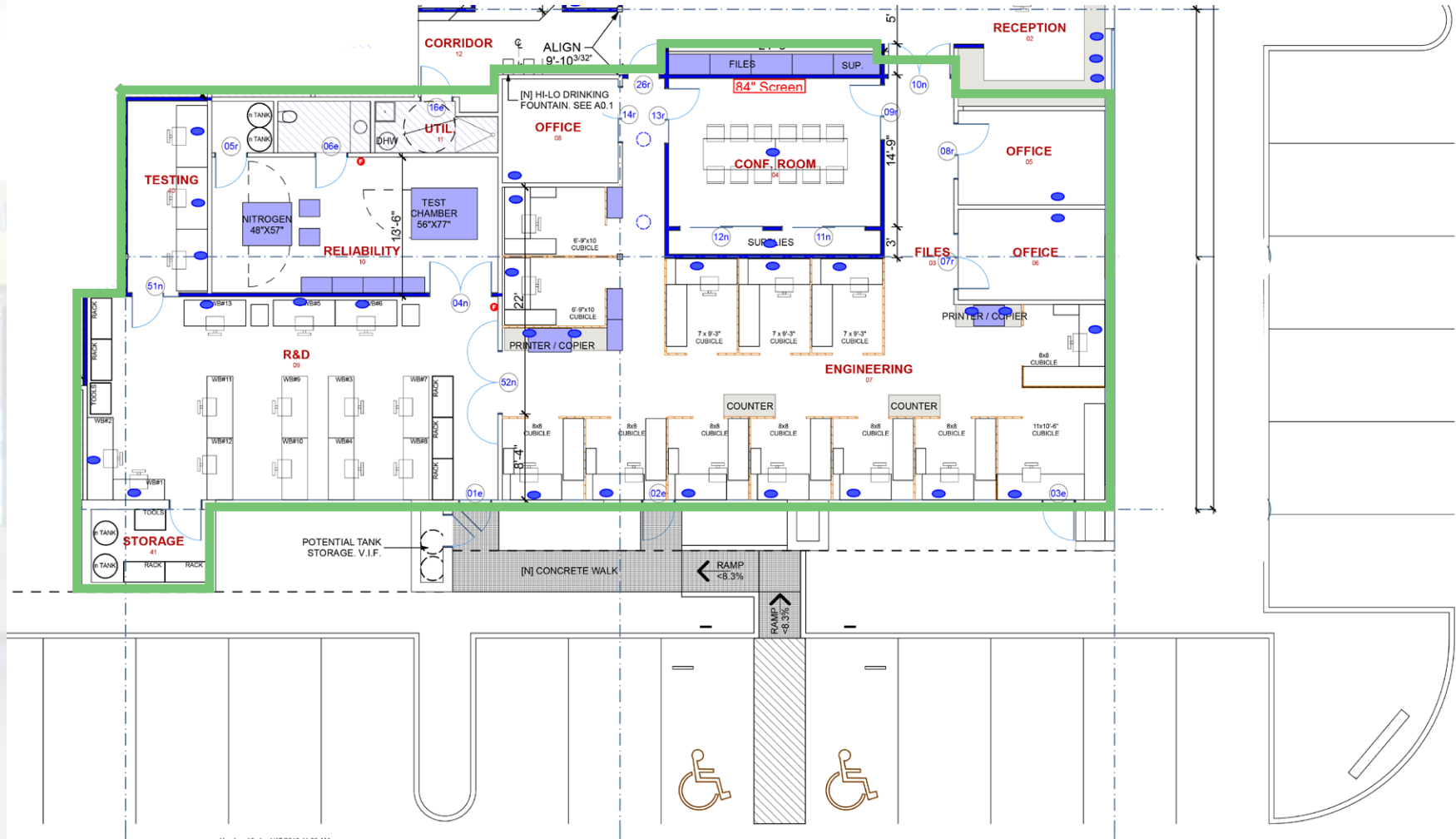
- Abundant on-site parking - 4:1000 ratio
- Great location with easy access to Hwy-101
- Close to many food choices, retail stores, banks and lodging
- Located at the gateway to Sonoma County

property highlights





Unit C ±4,625 RSF



Xandex_16.plt; 1/17/2012 11:23 AM

location
aerial



1360 Redwood Way, Petaluma

1360 Redwood Way | Petaluma



Old Redwood Hwy

Redwood Way

N McDowell Blvd

101

Stony Point Rd

Newmark

1360 Redwood Way

Redwood Business Park

Petaluma | California

**Office with Laboratory
Space **FOR LEASE****

JERRY SUYDERHOUD Senior Managing Director
jerry.suyderhoud@nrmk.com 415-526-7660
CA DRE #00633998

1101 Fifth Avenue, Suite 370
San Rafael, CA 94901
415.526.7676

nrmk.com

The distributor of this communication is performing acts for which a real estate license is required. The information contained herein has been obtained from sources deemed reliable but has not been verified and no guarantee, warranty or representation, either express or implied, is made with respect to such information. Terms of sale or lease and availability are subject to change or withdrawal without notice. Last updated: August 7, 2023 10:21 AM

NEWMARK