



THE SHOPS AT EMERALD ACRES SPORTS CONNECTION

Mattoon, Illinois



EMERALD ACRES SPORTS CONNECTION

- Now open, Emerald Acres Sports Connection is a \$100M indoor and outdoor sports complex development on 150 acres that is projected to draw 580,000 visitors and generate \$23.8 million in direct spending and 59,000 hotel room nights on an annual basis. This is a next generation best-in-class youth and amateur sports experience for families and athletes of all ages. It will have a high-quality, program-driven design, including indoor basketball/volleyball courts, outdoor baseball/softball and multipurpose turf fields, family entertainment, medical sector partnerships, food and beverage, and special events, such as concerts, rodeos, and other sports and entertainment experiences.

- Mattoon's central location between several major metropolitan statistical areas (Chicago, Indianapolis, and St. Louis) and numerous micropolitan statistical areas is the basis of the projected draw of the development. Youth sports (a \$45 billion industry) continues to be a reliable, recession-resistant driver of traffic and is forecasted to grow by 10-15% per year over the next 5-7 years (Wintergreen Research).
- This project will be developed and managed by the Sports Facilities Companies Network (Sports Facilities Advisory(SFA), Sports Facilities Development, and Sports Facilities Management(SFM)). The SFA has served more than 2,000 communities and is involved with more than \$10 billion in planned projects. SFM is the youth and amateur sports industry leader in design, development, and facility management. They manage the largest single network of sports tourism venues in the country.

THE SHOPS AT EMERALD ACRES SPORTS CONNECTION

- The Shops at Emerald Acres Sports Connection is the retail, restaurant, and hotel component of the 150 AC Emerald Acres development that will benefit from the draw of the sports complex and serve the Mattoon-Charleston Micropolitan Statistical Area, which has a trade area population of 101,319 and currently draws from up to 30 miles in all directions. That draw will expand to at least 200 miles with the opening of Emerald Acres Sports Connection (Now Open).
- The site will offer walkable access to retail, restaurant, and hotel amenities for players, families, and coaches, elevating the customer experience and driving repeat visits to the sports complex. Ninety percent of the money in youth travel sports is spent outside of the walls of the venue, and customer analytics confirms that the youth sports tourism audience represents some of the wealthiest lifestyle segments in America today with strong buying power.
- AVAILABLE:** Retail space and outlots for restaurants, hotels, and other retail uses

LEASING INFORMATION

www.goodmanrealestate.com
216.381.8200

CLEVELAND

THE OFFICES OF LEGACY VILLAGE
25333 CEDAR ROAD, SUITE 305
CLEVELAND, OH 44124

COLUMBUS

389 E. LIVINGSTON AVENUE
COLUMBUS, OHIO 43215

RANDY GOODMAN
randy@goodmanrealestate.com

ALEX JUSTICE
alex@goodmanrealestate.com

MAGGIE JONES
maggie@goodmanrealestate.com

in conjunction with State
of Illinois licensed broker



CENTURY 21 KIMA PROPERTIES
1600 Broadway Avenue
Mattoon, IL 61938



LEASING INFORMATION

www.goodmanrealestate.com

216.381.8200

RANDY GOODMAN
randy@goodmanrealestate.com
ALEX JUSTICE
alex@goodmanrealestate.com
MAGGIE JONES
maggie@goodmanrealestate.com

in conjunction with State of Illinois licensed broker
21
CENTURY 21 KIMA PROPERTIES
1600 Broadway Avenue
Mattoon, IL 61938

THE SHOPS AT EMERALD ACRES SPORTS CONNECTION

Mattoon, Illinois



THE INFORMATION ABOVE HAS BEEN OBTAINED FROM SOURCES BELIEVED TO BE RELIABLE. GOODMAN REAL ESTATE SERVICES GROUP LLC AND ITS AGENTS, ASSOCIATES, AND EMPLOYEES MAKE NO GUARANTEE, WARRANTY OR REPRESENTATION ABOUT IT. ALL IMAGES CONTAINED HEREIN ARE THE PROPERTY OF GOODMAN REAL ESTATE SERVICES GROUP LLC AND SHALL NOT BE DUPLICATED OR REPRODUCED WITHOUT EXPRESS WRITTEN CONSENT OF GOODMAN REAL ESTATE SERVICES GROUP LLC. YOU ACKNOWLEDGE THAT, AS REQUIRED BY THE STATE OF OHIO, YOU HAVE RECEIVED THE CONSUMER GUIDE TO AGENCY RELATIONSHIPS.



LEASING INFORMATION

www.goodmanrealestate.com

216.381.8200

RANDY GOODMAN
randy@goodmanrealestate.com
ALEX JUSTICE
alex@goodmanrealestate.com
MAGGIE JONES
maggie@goodmanrealestate.com

in conjunction with State of Illinois licensed broker
21
CENTURY 21 KIMA PROPERTIES
1600 Broadway Avenue
Mattoon, IL 61938

THE SHOPS AT EMERALD ACRES SPORTS CONNECTION

Mattoon, Illinois



SEP 24



LEASING INFORMATION

www.goodmanrealestate.com

216.381.8200

RANDY GOODMAN
randy@goodmanrealestate.com
ALEX JUSTICE
alex@goodmanrealestate.com
MAGGIE JONES
maggie@goodmanrealestate.com

— in conjunction with State of Illinois licensed broker —
21
CENTURY 21 KIMA PROPERTIES
1600 Broadway Avenue
Mattoon, IL 61938

**THE SHOPS AT EMERALD ACRES
SPORTS CONNECTION**

Mattoon, Illinois

CROSS COUNTY MALL
ESTD 1960
RURAL KING
AMERICA'S FARM & HOME STORE
Marshalls JOANN
Dunhan's

43 AC AVAILABLE

18,237 VPD (23)

Walmart Supercenter

60 AC AVAILABLE

CHARLESTON AVE

18,054 VPD (23)

THE SHOPS AT EMERALD ACRES SPORTS CONNECTION

bealls HOME-centric SIERRA
ROSS DRESS FOR LESS
Michael's
FAMOUS footwear
ULTA BEAUTY
five BELOW
Bath & Body Works
maurices

EMERALD ACRES

\$100M indoor & outdoor sports & shopping complex
140,000 SF field house and 12 multi-purpose turf fields that can host 20 junior baseball/softball fields, 4 varsity baseball fields, and 8 soccer fields
130,000 SF shopping center anchored by Bealls Home Centric, Michaels, Ulta, Five Below, and Famous Footwear, plus restaurants Chick-fil-A, Chipotle, and Panda Express opening in 2024/2025

Logos on map: Burger King, CVS Pharmacy, Usbank, Papa Murphy's, Family Video, Sherwin Williams, CarX, bp, Rural King, Marshalls, JOANN, Dunhan's, Walmart Supercenter, PetSmart, Harbor Freight, Aldi, Cato, Dollar Tree, Shoe Sensation, Hibbett Sports, RentX, AT&T, Starbucks, Buffalo Wild Wings, Taco Bell, McDonald's, Freddy's Steakhouses, Stadium Grill, Great Clips, Express, Aspen Dental, Best Western, Comfort Suites, Fujiyama, Subway, Wendy's, BlueCross BlueShield, Hilton Garden Inn, Amc Classic, HSHS Medical Group, Planet Fitness, Big Lots, Walgreens, Denny's, Slumberland, Planet Fitness, Big Lots, Walgreens, Denny's, Slumberland, PetSmart, Harbor Freight, Aldi, Cato, Dollar Tree, Shoe Sensation, Hibbett Sports, RentX, AT&T, Starbucks, Buffalo Wild Wings, Taco Bell, McDonald's, Freddy's Steakhouses, Stadium Grill, Great Clips, Express, Aspen Dental.

THE INFORMATION ABOVE HAS BEEN OBTAINED FROM SOURCES BELIEVED TO BE RELIABLE. GOODMAN REAL ESTATE SERVICES GROUP LLC AND ITS AGENTS, ASSOCIATES, AND EMPLOYEES MAKE NO GUARANTEE, WARRANTY OR REPRESENTATION ABOUT IT. ALL IMAGES CONTAINED HEREIN ARE THE PROPERTY OF GOODMAN REAL ESTATE SERVICES GROUP LLC AND SHALL NOT BE DUPLICATED OR REPRODUCED WITHOUT EXPRESS WRITTEN CONSENT OF GOODMAN REAL ESTATE SERVICES GROUP LLC. YOU ACKNOWLEDGE THAT, AS REQUIRED BY THE STATE OF OHIO, YOU HAVE RECEIVED THE CONSUMER GUIDE TO AGENCY RELATIONSHIPS.



LEASING INFORMATION

www.goodmanrealestate.com

216.381.8200

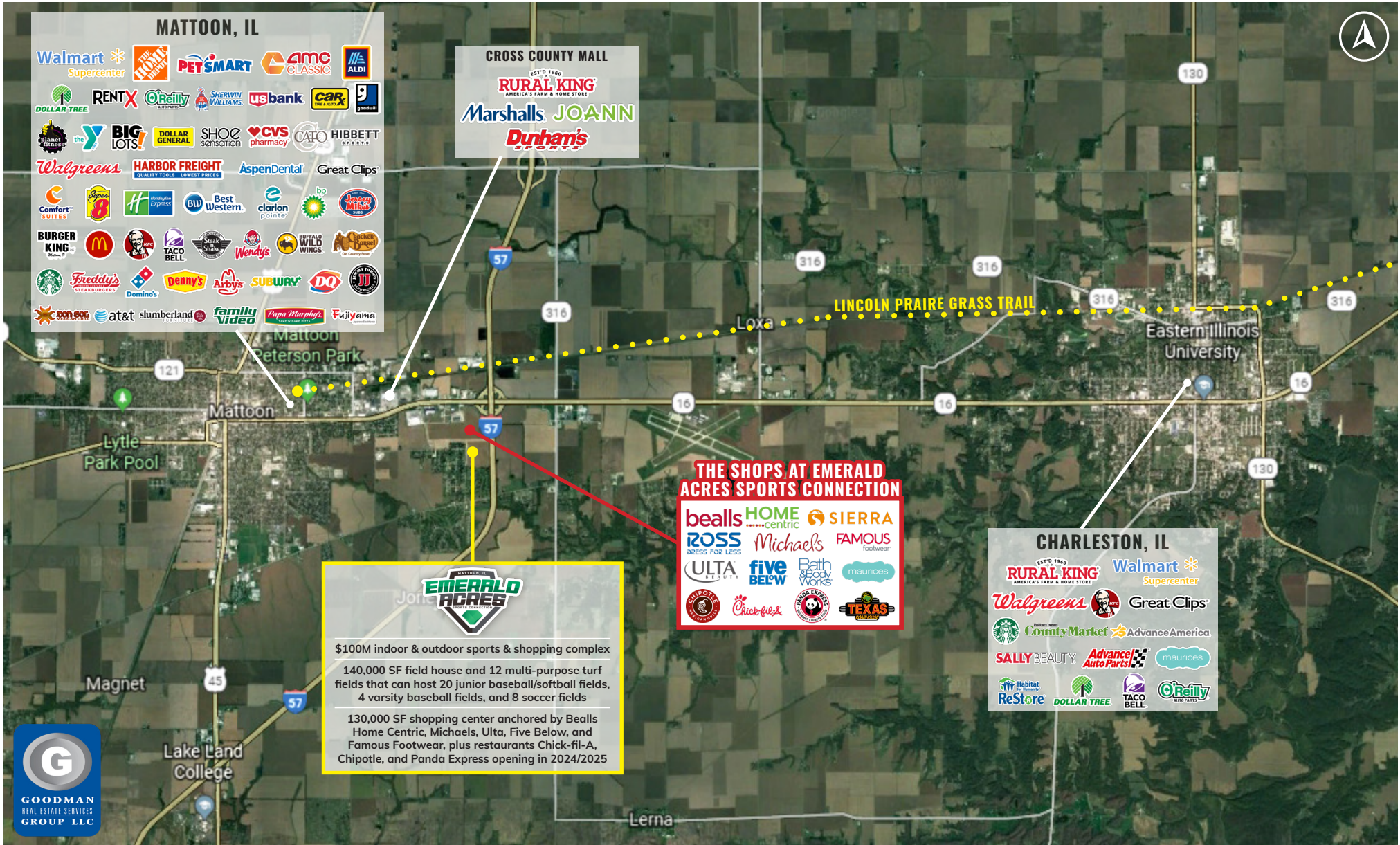
RANDY GOODMAN
randy@goodmanrealestate.com
ALEX JUSTICE
alex@goodmanrealestate.com
MAGGIE JONES
maggie@goodmanrealestate.com

in conjunction with State
of Illinois licensed broker
21
CENTURY 21 KIMA PROPERTIES
1600 Broadway Avenue
Mattoon, IL 61938

THE SHOPS AT EMERALD ACRES SPORTS CONNECTION

Mattoon, Illinois

MICROPOLITAN STATISTICAL AREA



EMERALD ACRES

\$100M indoor & outdoor sports & shopping complex

140,000 SF field house and 12 multi-purpose turf fields that can host 20 junior baseball/softball fields, 4 varsity baseball fields, and 8 soccer fields

130,000 SF shopping center anchored by Bealls Home Centric, Michaels, Ulta, Five Below, and Famous Footwear, plus restaurants Chick-fil-A, Chipotle, and Panda Express opening in 2024/2025

THE INFORMATION ABOVE HAS BEEN OBTAINED FROM SOURCES BELIEVED TO BE RELIABLE. GOODMAN REAL ESTATE SERVICES GROUP LLC AND ITS AGENTS, ASSOCIATES, AND EMPLOYEES MAKE NO GUARANTEE, WARRANTY OR REPRESENTATION ABOUT IT. ALL IMAGES CONTAINED HEREIN ARE THE PROPERTY OF GOODMAN REAL ESTATE SERVICES GROUP LLC AND SHALL NOT BE DUPLICATED OR REPRODUCED WITHOUT EXPRESS WRITTEN CONSENT OF GOODMAN REAL ESTATE SERVICES GROUP LLC. YOU ACKNOWLEDGE THAT, AS REQUIRED BY THE STATE OF OHIO, YOU HAVE RECEIVED THE CONSUMER GUIDE TO AGENCY RELATIONSHIPS.