

30100 VAN DYKE AVENUE
WARREN, MICHIGAN

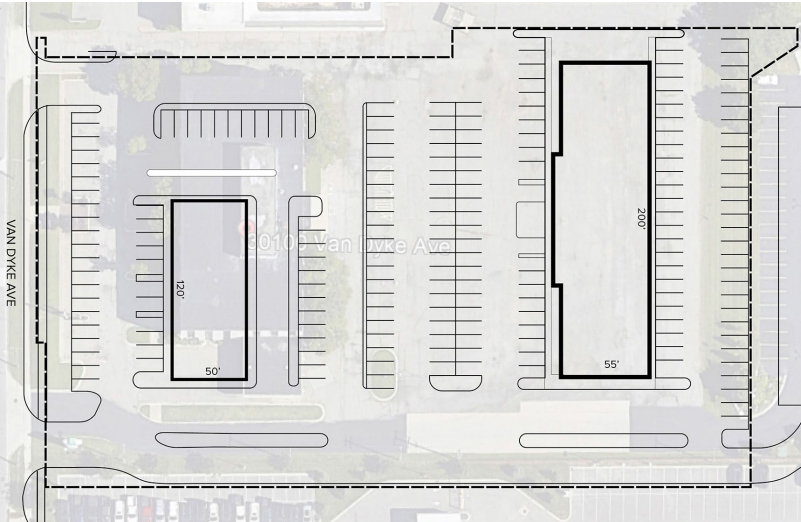
OFFICE FOR SALE
41,055 Square Feet Available



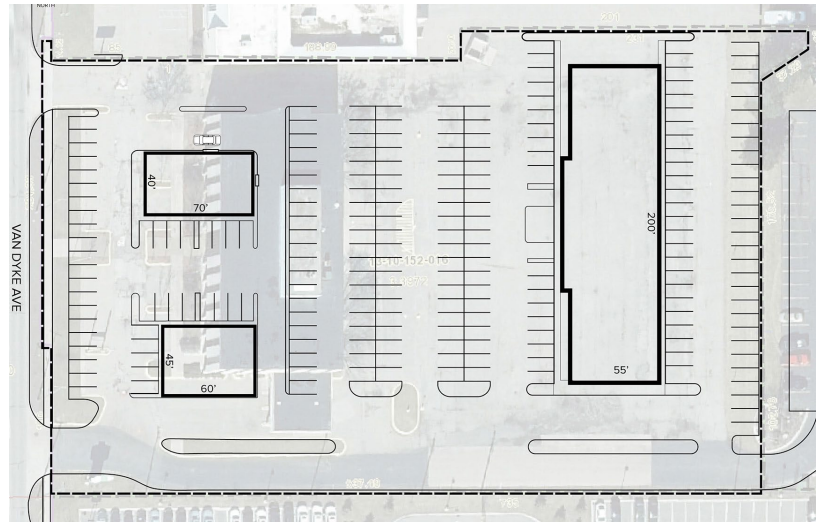
**SIGNATURE
ASSOCIATES**
KNOW SIGNATURE | KNOW RESULTS

PERFECT FOR HOTEL DEVELOPMENT

PLAN CONCEPT 1

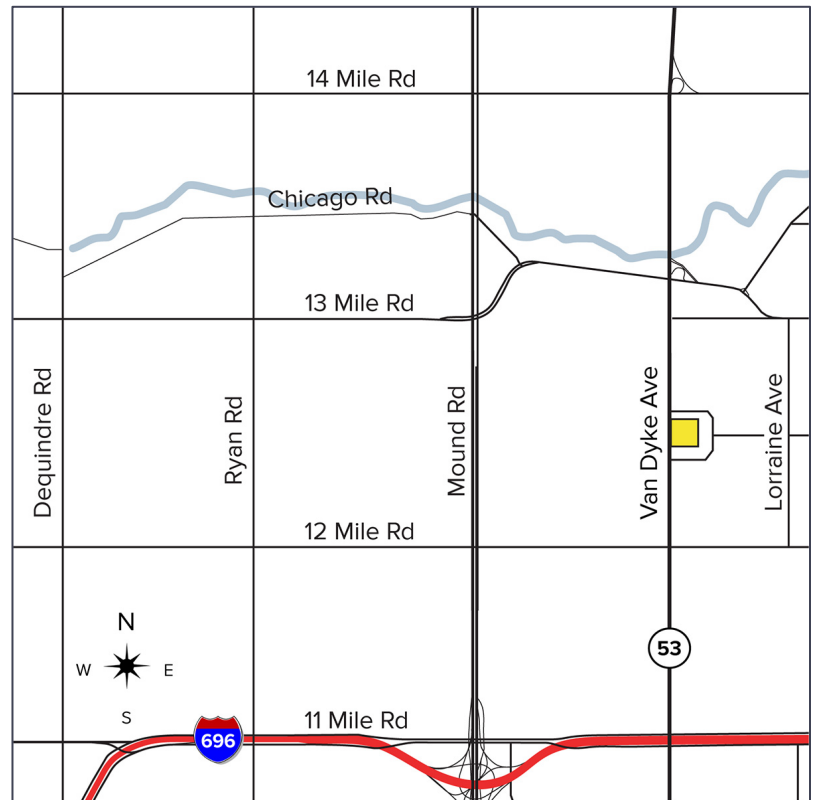


PLAN CONCEPT 2



PROPERTY FEATURES

- Rare opportunity to own in Warren's City Center
- 41,055 square feet for sale
- Located directly across from GM Tech Center on Van Dyke Avenue situated on 3.1 acres
- Zoned Urban Neighborhood
- Current has 200+ free surface parking
- Asking Price: \$2,650,000 (\$64.55/sq. ft)



For more information, please contact:

PETER VANDERKAAY
(248) 359 3837
pvanderkaay@signatureassociates.com

JOE HAMWAY
(248) 948 0113
jhamway@signatureassociates.com

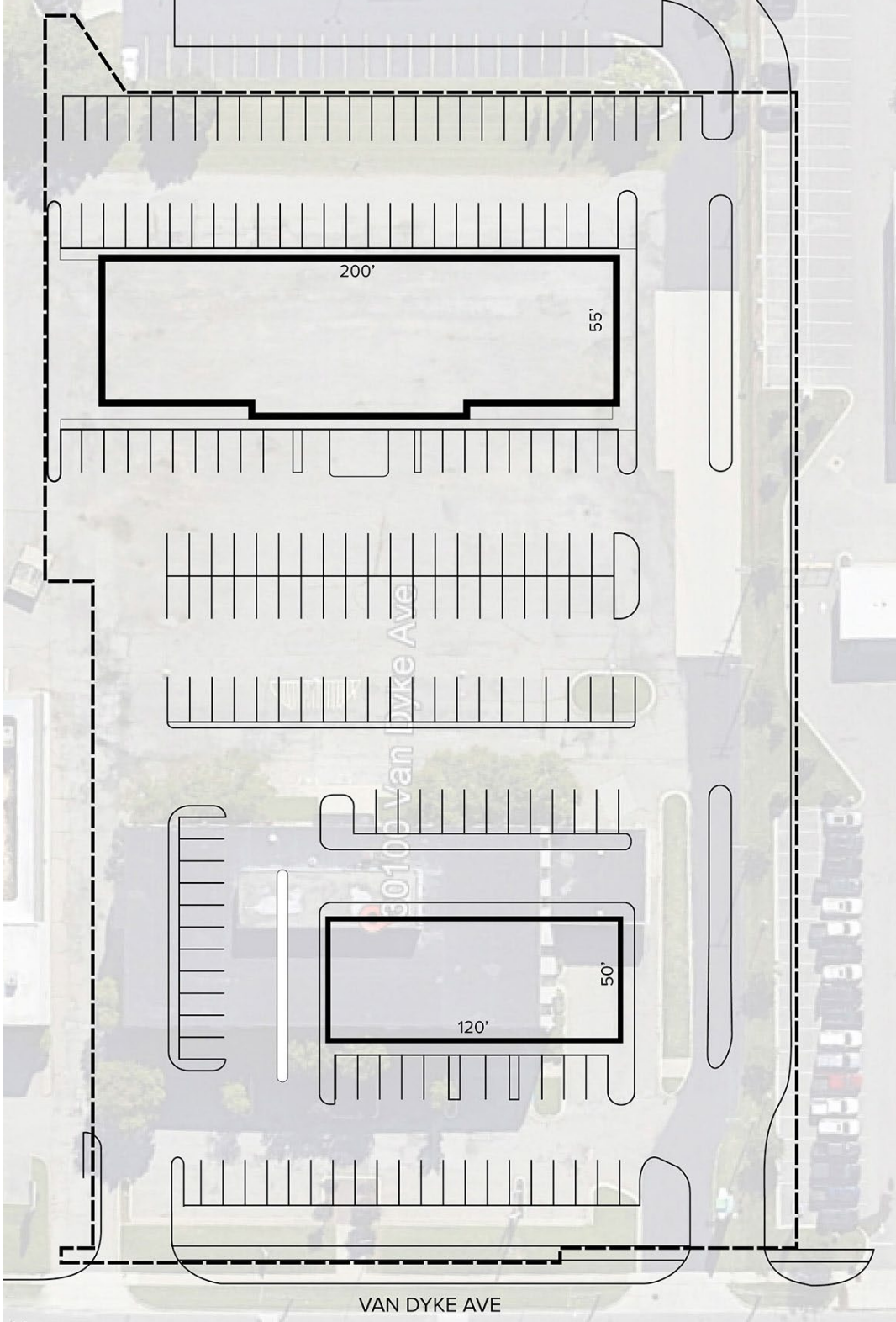
SIGNATURE ASSOCIATES
One Towne Square, Suite 1200
Southfield, MI 48076
www.signatureassociates.com

30100 Van Dyke Avenue – Warren, Michigan

Office For Sale

41,055
Square Feet
AVAILABLE

Plan Concept 1



For more information, please contact:

PETER VANDERKAAY
(248) 359 3837
pvanderkaay@signatureassociates.com

JOE HAMWAY
(248) 948 0113
jhamway@signatureassociates.com

SIGNATURE ASSOCIATES
One Towne Square, Suite 1200
Southfield, MI 48076
www.signatureassociates.com

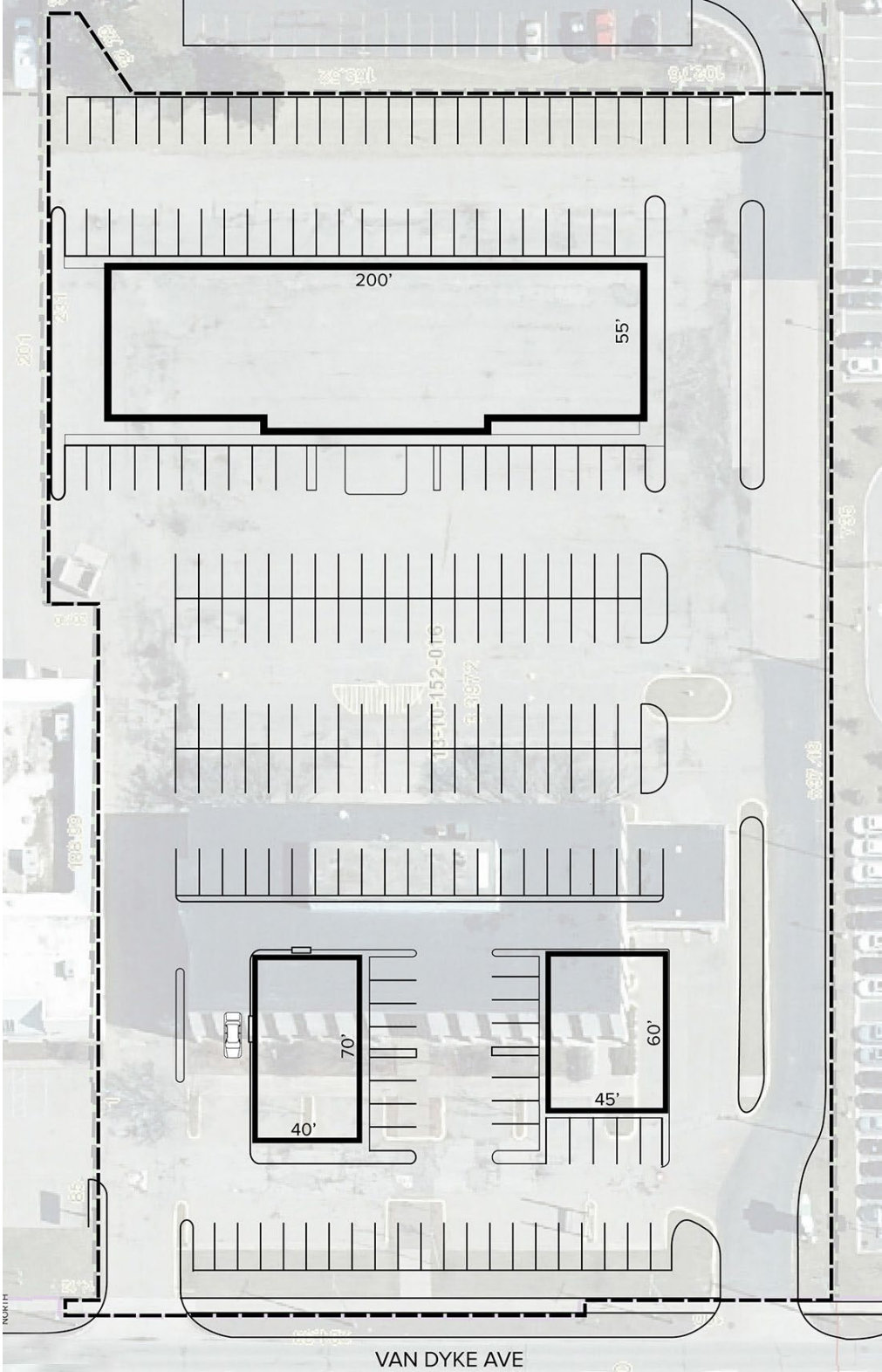
Information is subject to verification and no liability for errors or omissions is assumed. Price is subject to change and listing withdrawal.

30100 Van Dyke Avenue – Warren, Michigan

Office For Sale

41,055
Square Feet
AVAILABLE

Plan Concept 2



For more information, please contact:

PETER VANDERKAAY
(248) 359 3837
pvanderkaay@signatureassociates.com

JOE HAMWAY
(248) 948 0113
jhamway@signatureassociates.com

SIGNATURE ASSOCIATES
One Towne Square, Suite 1200
Southfield, MI 48076
www.signatureassociates.com

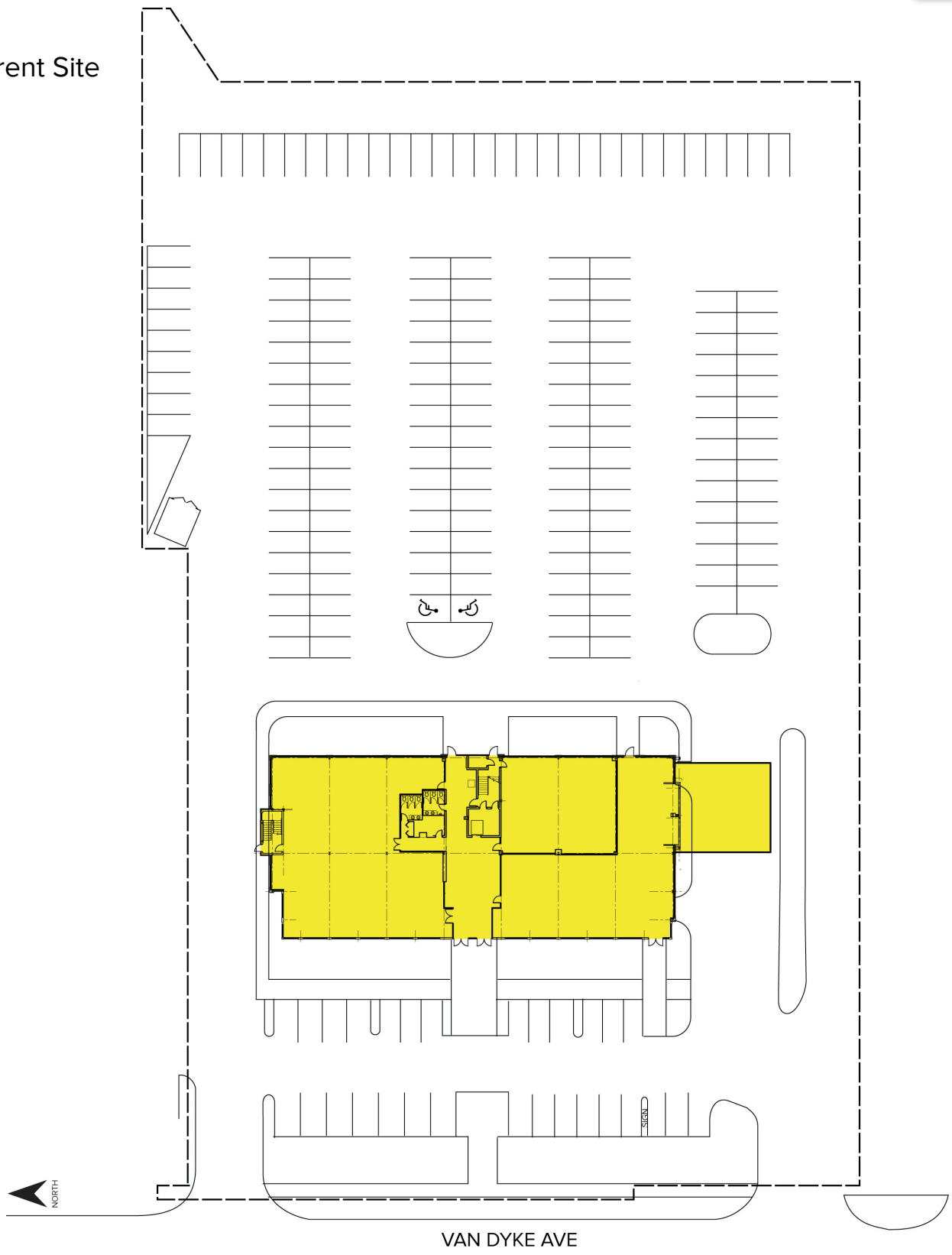
Information is subject to verification and no liability for errors or omissions is assumed. Price is subject to change and listing withdrawal.

30100 Van Dyke Avenue – Warren, Michigan

Office For Sale

41,055
Square Feet
AVAILABLE

Current Site



For more information, please contact:

PETER VANDERKAAY
(248) 359 3837
pvanderkaay@signatureassociates.com

JOE HAMWAY
(248) 948 0113
jhamway@signatureassociates.com

SIGNATURE ASSOCIATES
One Towne Square, Suite 1200
Southfield, MI 48076
www.signatureassociates.com

Information is subject to verification and no liability for errors or omissions is assumed. Price is subject to change and listing withdrawal.

30100 Van Dyke Avenue – Warren, Michigan

Office For Sale

41,055
Square Feet
AVAILABLE

Aerial



For more information, please contact:

PETER VANDERKAAY
(248) 359 3837
pvanderkaay@signatureassociates.com

JOE HAMWAY
(248) 948 0113
jhamway@signatureassociates.com

SIGNATURE ASSOCIATES
One Towne Square, Suite 1200
Southfield, MI 48076
www.signatureassociates.com