

LEED SILVER CERTIFIED CLASS A OFFICE | FOR LEASE

PORTICO NORTH

3330 E LOUISE DRIVE | MERIDIAN, ID 83642

TOK
COMMERCIAL



MIKE GREENE SIOR, CCIM
208.947.0835
mikeg@tokcommercial.com

PETER OLIVER SIOR, CCIM
208.947.0816
peter@tokcommercial.com

NICK SCHUITEMAKER, CCIM
208.947.0802
nick@tokcommercial.com



PROPERTY INFORMATION

SUBMARKET:	Meridian	# OF FLOORS:	6
BLDG TYPE:	Office	PARKING:	5:1,000
BLDG SIZE:	134,207 SF	AVAILABLE:	Immediately
BLDG QUALITY:	Class A	LEASE TYPE:	FSEJ

AVAILABLE SPACE

SPACE	RSF	RATE
2nd Floor*	2,900 - 20,969 SF	\$24.00/SF
3rd Floor**	8,500 - 20,718 SF	\$24.00/SF
6th Floor***	5,200 - 20,700 SF	\$24.00/SF
Combined	62,387 SF	\$24.00/SF

*Divisibility range of 2,900 - 6,500 SF

**Divisibility range of 8,500 - 10,000 SF

***Divisibility range of 5,200 - 6,000 SF

PROPERTY HIGHLIGHTS

LEED Silver Certification.

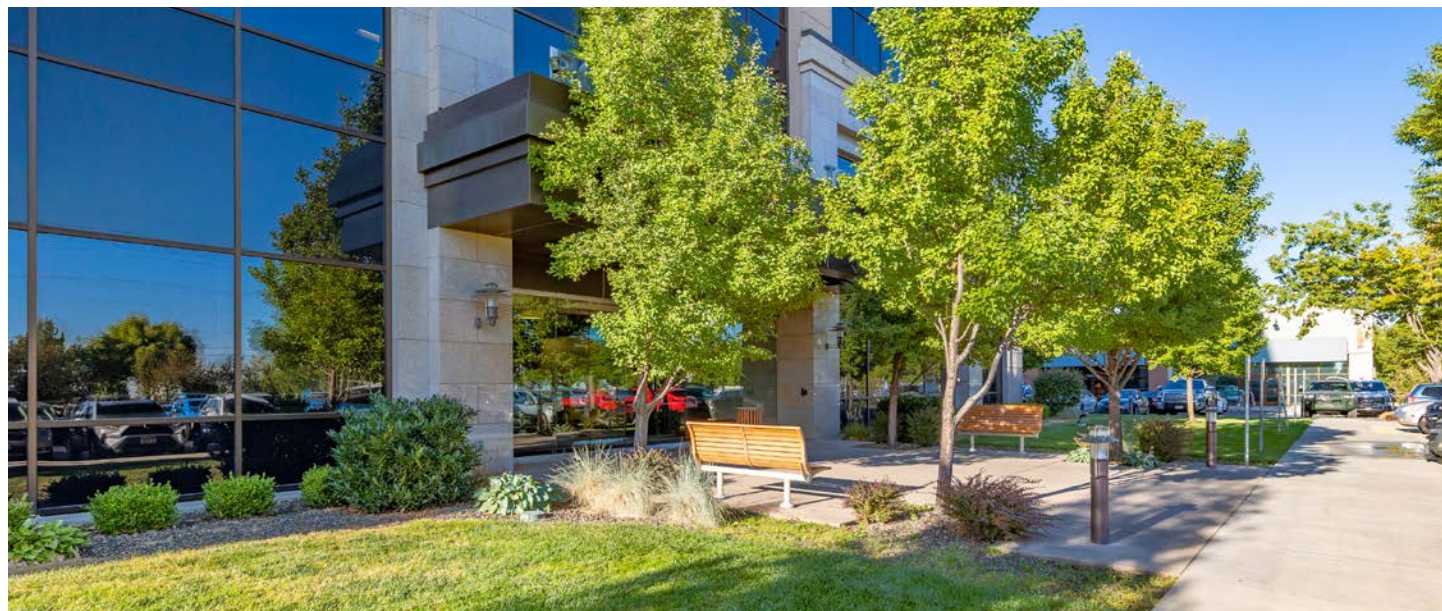
Potential for building signage.

Just north of St. Luke's Regional Medical Center.

Desirable access to I-84, Eagle Road, and Franklin Road.

Surrounded by an abundance of professional and retail amenities.

Excellent corner exposure with rare Eagle and Franklin Road frontage.



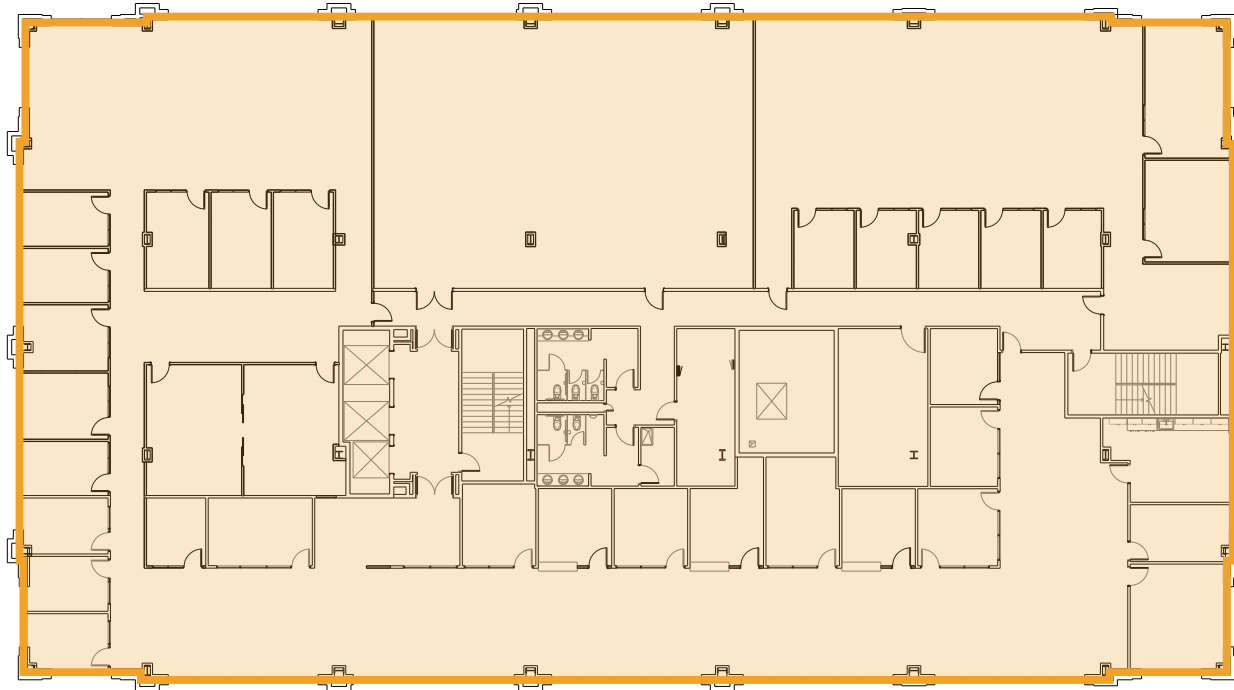




SECOND FLOOR

**20,969 SF
AVAILABLE**

**2,900 - 6,500 SF
DIVISIBLE**

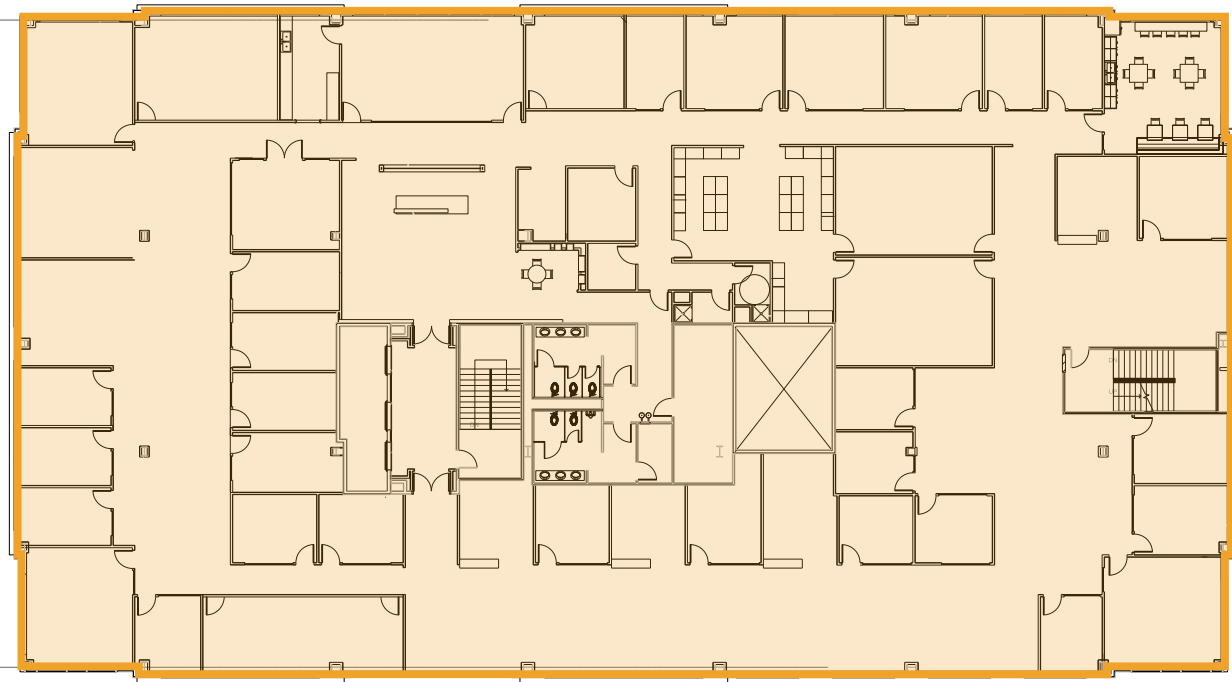




THIRD FLOOR

**20,718 SF
AVAILABLE**

**8,500 - 10,000 SF
DIVISIBLE**

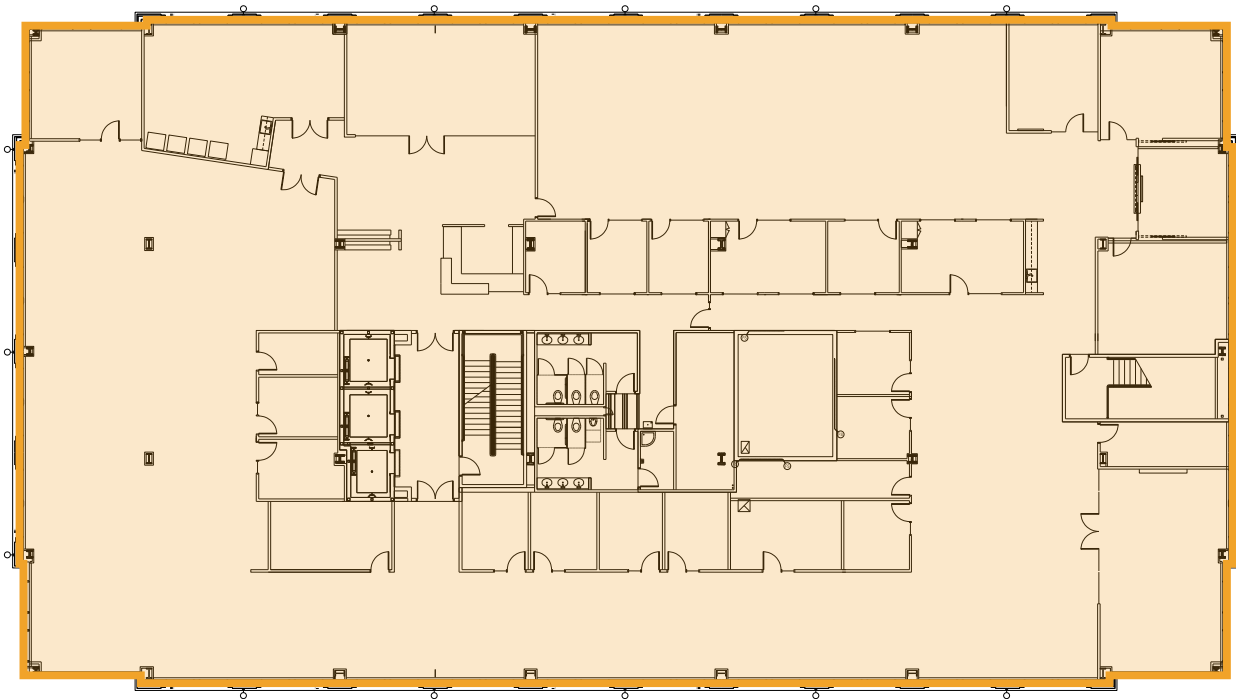




SIXTH FLOOR

**20,700 SF
AVAILABLE**

**5,200 - 6,000 SF
DIVISIBLE**



THE VILLAGE AT MERIDIAN



SCENTSY

SITE

PORTICO AT MERIDIAN CENTER



FRANKLIN ROAD

EAGLE ROAD

St Luke's

EAGLE VIEW PLAZA



INTERSTATE 84

EAGLE VIEW LANDING

