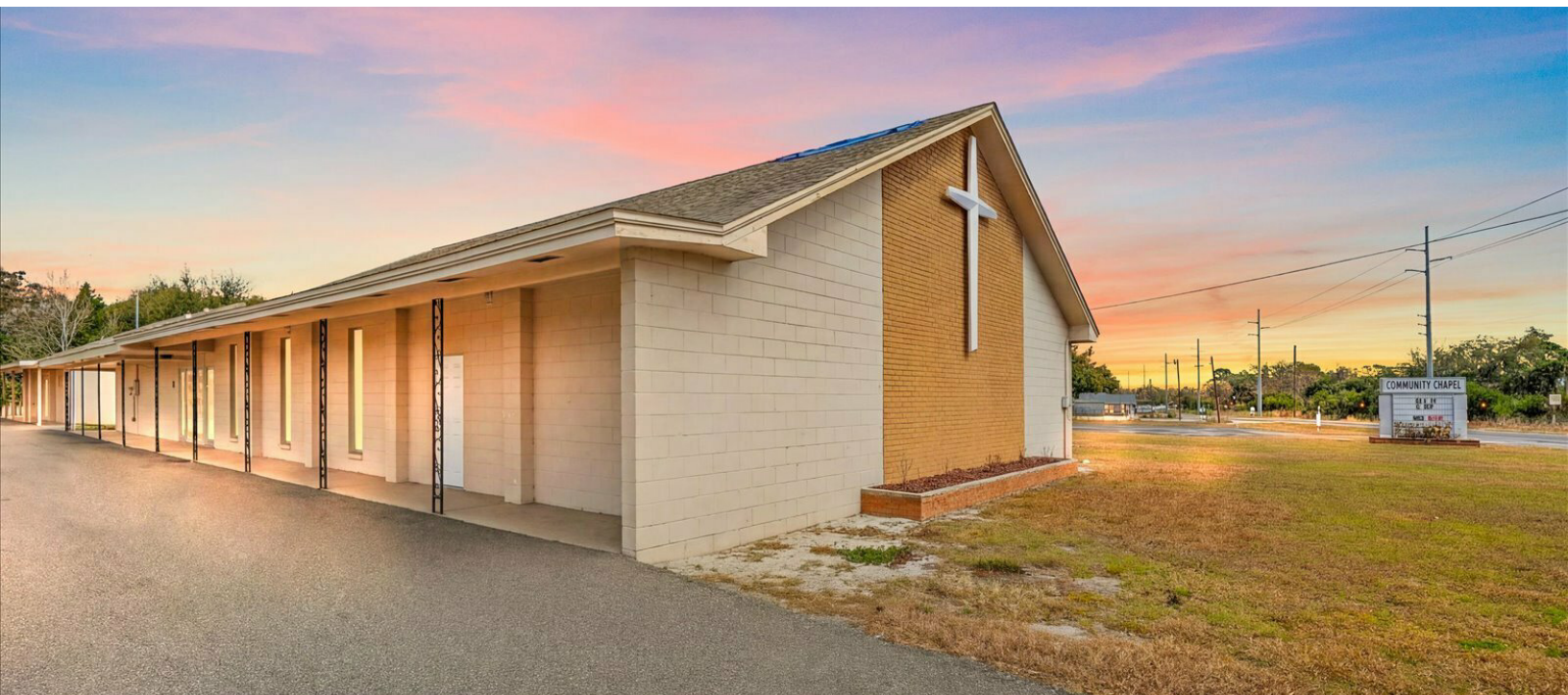


# Church of God - Golden Triangle Community Chapel

3601 W Old US Highway 441, Mount Dora, FL 32757

Special  
Purpose  
Property For  
Sale



VIDEO

360° VIRTUAL TOUR

## Property Description

4/16/2026 \*\*NEW ROOFS\*\* \*\*NEW A/C IN SANCTUARY\*\*

Church facility located on 2.4 acres of property located in Mount Dora, Florida with frontage on Old US Hwy 441. Total building area consists of 8,668 SF which is divided into 2 separate buildings. The front building is 5,918 SF and consists of a 2,400 SF sanctuary, 6 classrooms, a large meeting room with a kitchen and multiple restrooms. The rear building is a 2,750 SF fellowship hall with a full kitchen, restrooms and storage area. All furniture, fixtures, and tangible property included in sale!

Multiple possible uses include a Church, private school, pre-school or general commercial.

## OFFERING SUMMARY

Sale Price:	\$1,050,000
Lot Size:	2.4 Acres
Building Size:	8,668 SF

DEMOGRAPHICS	1 MILE	3 MILES	5 MILES
Total Households	3,305	16,691	32,065
Total Population	7,365	37,835	74,640
Average HH Income	\$64,612	\$77,873	\$83,780



**Loyd Robbins**

Principal Broker  
(941)-356-9659  
loyd@rerobbins.com



3580 S. Tuttle Ave  
Sarasota FL 34239

www.rerobbins.com

# Situated on 2.4 Acres

Special  
Purpose  
Property For  
Sale

3601 W Old US Highway 441, Mount Dora, FL 32757



**Loyd Robbins**  
Principal Broker  
(941)-356-9659  
loyd@rerobbins.com

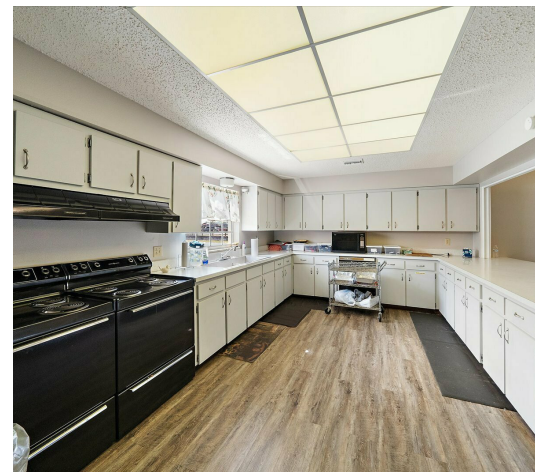
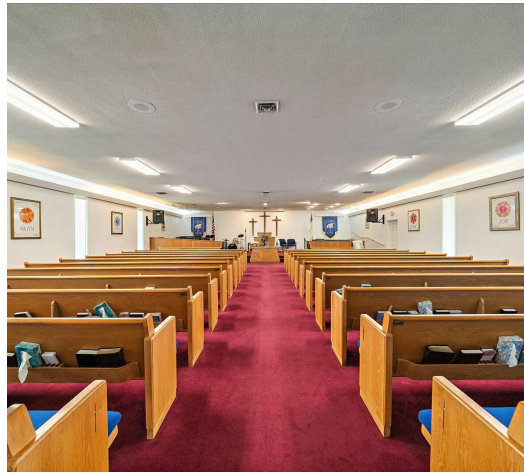


3580 S. Tuttle Ave  
Sarasota FL 34239  
[www.rerobbins.com](http://www.rerobbins.com)

# All Furniture, Fixtures, & Tangible Property Included

3601 W Old US Highway 441, Mount Dora, FL 32757

Special  
Purpose  
Property For  
Sale



**Loyd Robbins**  
Principal Broker  
(941)-356-9659  
loyd@rerobbins.com

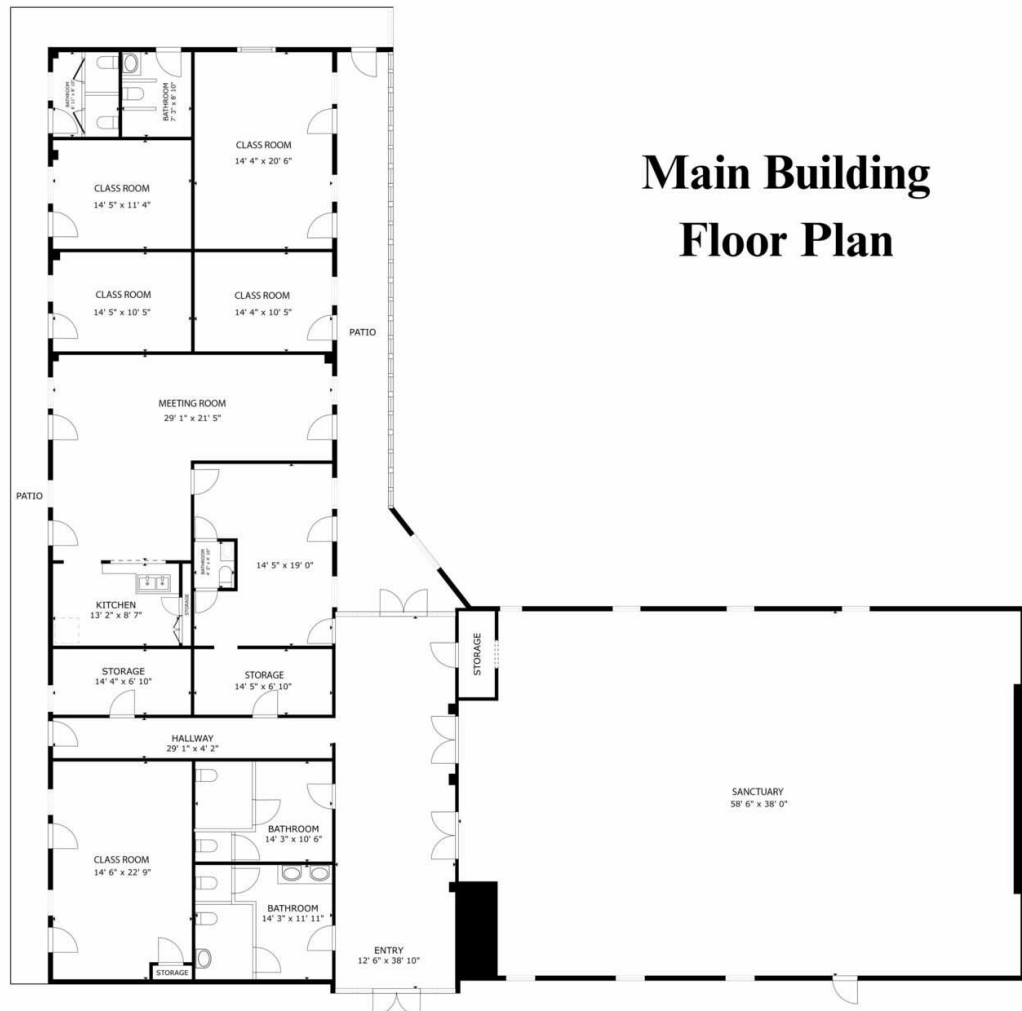


3580 S. Tuttle Ave  
Sarasota FL 34239  
www.rerobbins.com

# Main Building Floor Plan

Special  
Purpose  
Property For  
Sale

3601 W Old US Highway 441, Mount Dora, FL 32757



## Main Building Floor Plan



**Loyd Robbins**

Principal Broker  
(941)-356-9659  
loyd@rerobbins.com



3580 S. Tuttle Ave  
Sarasota FL 34239

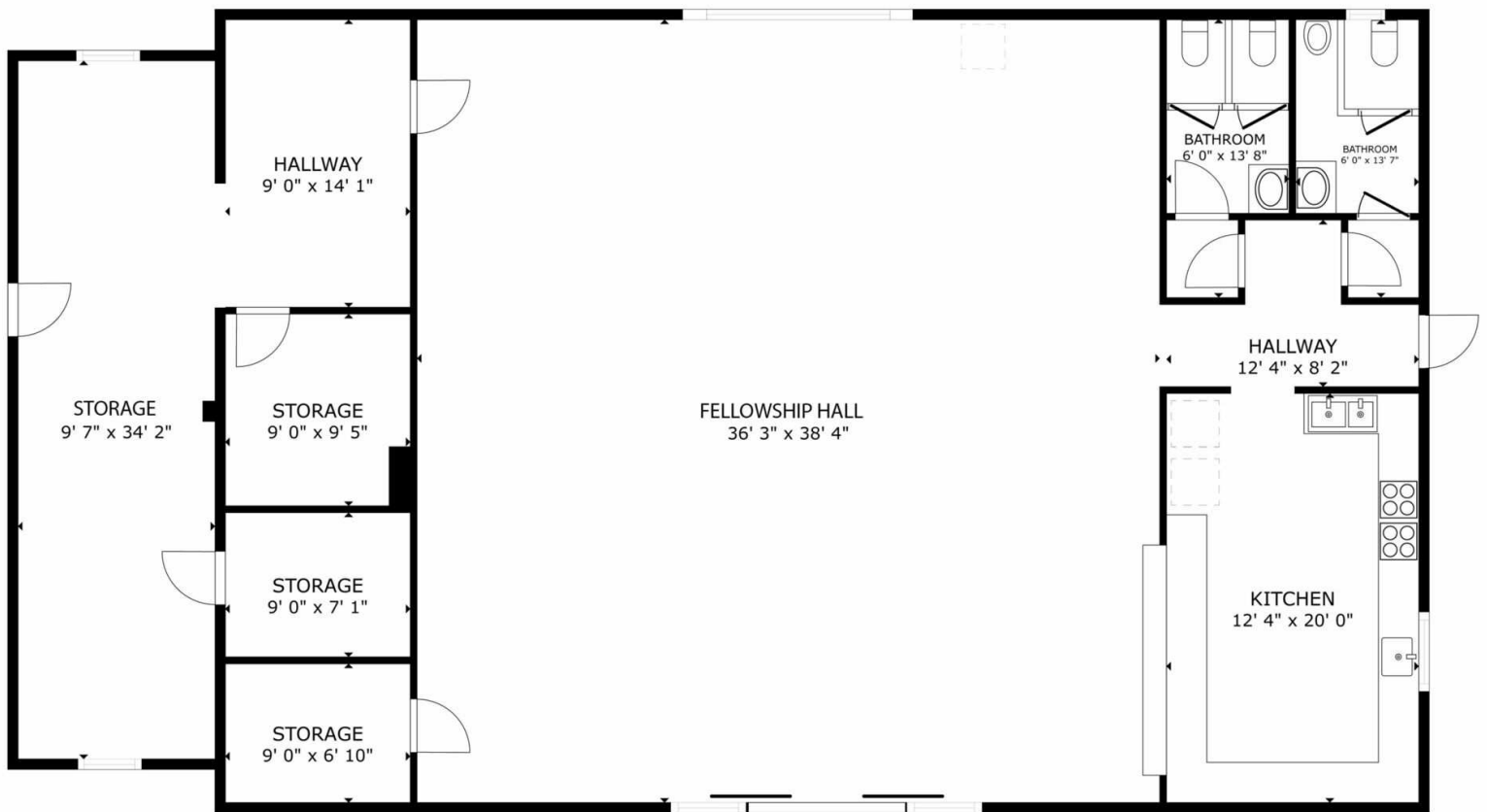
[www.rerobbins.com](http://www.rerobbins.com)

# Fellowship Hall Building Floor Plan

3601 W Old US Highway 441, Mount Dora, FL 32757

Special  
Purpose  
Property For  
Sale

## Fellowship Hall Building Floor Plan



**Loyd Robbins**

Principal Broker  
(941)-356-9659  
loyd@rerobbins.com



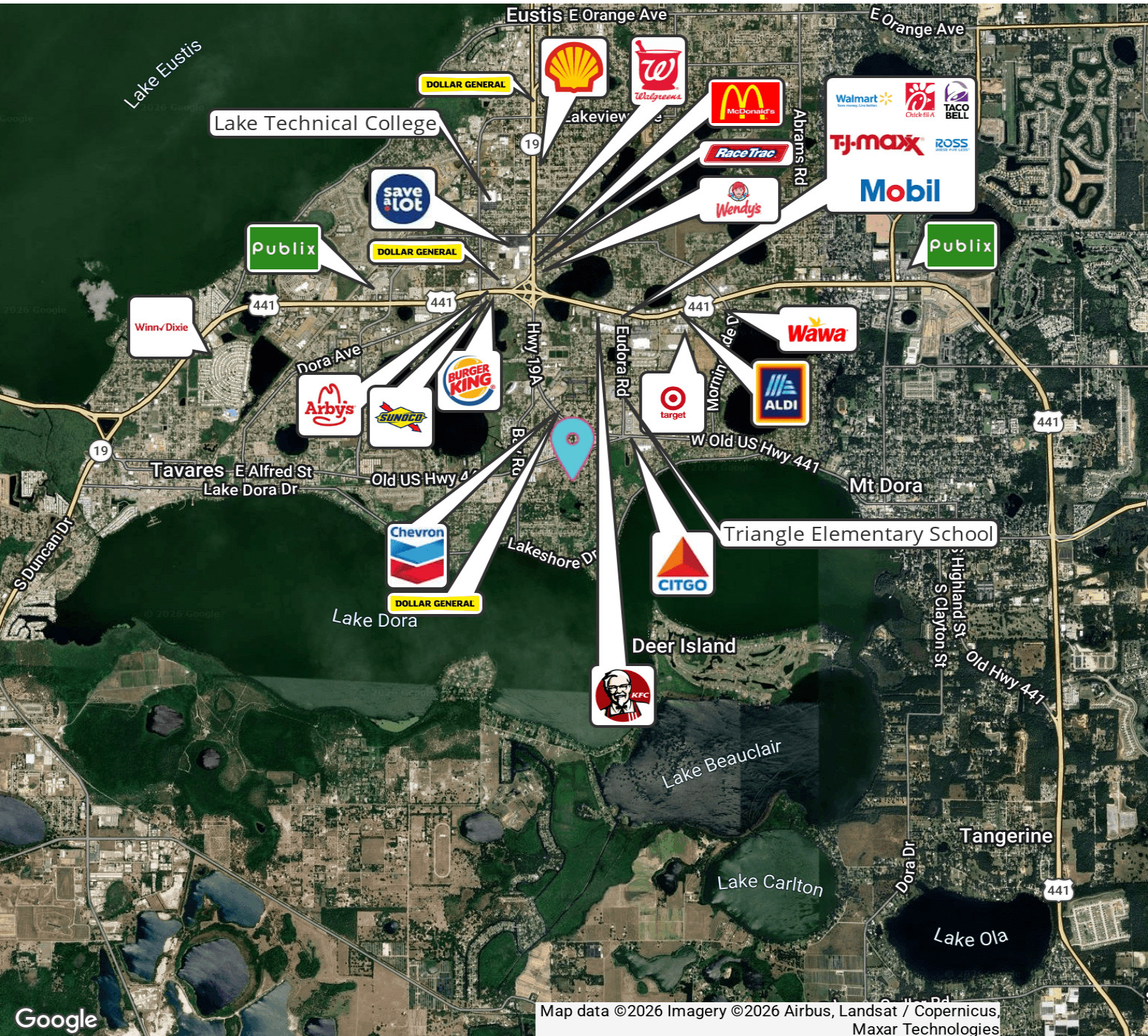
3580 S. Tuttle Ave  
Sarasota FL 34239

[www.rerobbins.com](http://www.rerobbins.com)

# Well Traveled Corridor

Special  
Purpose  
Property For  
Sale

3601 W Old US Highway 441, Mount Dora, FL 32757



**Loyd Robbins**

Principal Broker  
(941)-356-9659  
loyd@rerobbins.com



3580 S. Tuttle Ave  
Sarasota FL 34239

[www.rerobbins.com](http://www.rerobbins.com)