

FOR SUBLEASE

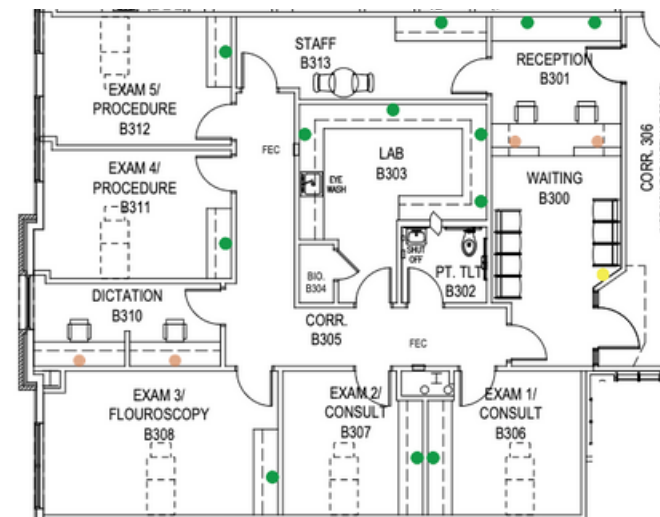
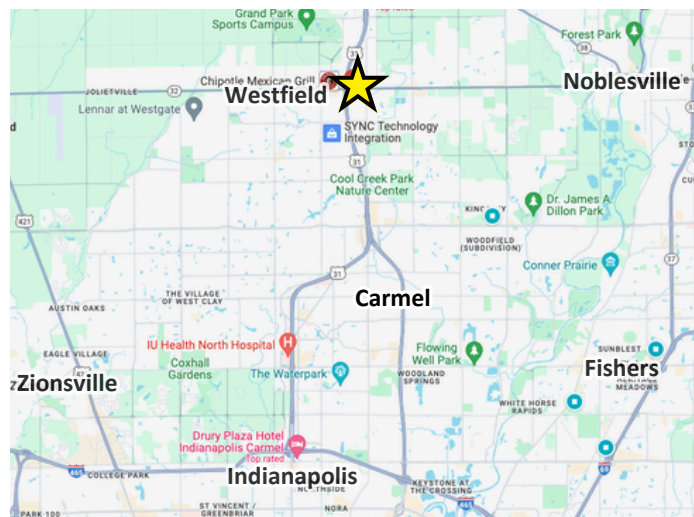
MEDICAL OFFICE

17300 Westfield Blvd, Westfield, IN 46074



Brand new high-quality medical office space coming to the heart of Westfield, IN. Slated for completion in Q1 2025, this Class A Medical Office space is situated near the intersection of US 31 and SR 32. Join a high-quality Tenant mix servicing the quickly growing population of central Indiana.

AVAILABLE SF:	2,397 SF
LEASE RATE:	\$25.00 PSF NNN
DELIVERY:	Q1 2025
AVG HH INCOME (5MI):	\$ 132,926
POPULATION (5 MI):	119,156



KW COMMERCIAL
G2 Real Estate Group
8555 N River Road,
Ste. 200
Indianapolis, IN 46240

BOBBY BURLAS
Commercial Associate
O: 317.564.7158
bobbyb@g2reg.com
IN #396541649

Each Office Independently Owned and Operated kwcommercial.com

MEDICAL OFFICE

17300 Westfield Blvd, Westfield, IN 46074



Union Square

- +/- 100 Residential Units
- 10,000 SF of Retail / Office
- Located in the Heart of Downtown Westfield



Riverview Health Hospital

- Emergency Room and Urgent Care
- ER Hours: 24/7
- Services Include: Surgery, Bone & Breast Center, Orthopedics, Rehabilitation Therapy



Westfield Library

- New \$17M Public Library
- Built in 2024
- 45,000 SF Building
- Steps from Downtown Westfield

