

789 BROADWAY

CORNER OF FAYETTE STREET
BUSHWICK, BROOKLYN



22,000 SF Retail Space for Rent



789 BROADWAY

CORNER OF FAYETTE STREET | BUSHWICK

PROPERTY DETAILS:

SIZE: 7,500 SF Ground Floor
7,000 SF Second Floor
7,500 SF Selling Lower Level
22,000 SF Total

FRONTAGE: 50'

CEILING HEIGHT: 11' 10" Ground Floor
10' 8" Second Floor
11' 8" Selling Lower Level

POSSESSION: Arranged

ASKING RENT: Upon Request

TRANSPORTATION: J M

HIGHLIGHTS:

- Heavy foot & vehicle traffic area
- Excellent national cotenancy
- Neighboring tenants:
Planet Fitness, Starbucks, Chipotle, Auntie Anne's, VIM, Walgreens, Sonic, Woodhull Hospital, McDonald's, Popeyes, Dunkin' Popular Bank, CityMD, AT&T, Dunkin'



All information supplied in this marketing presentation and/or flyer is from sources deemed reliable and is furnished subject to errors, omissions, modifications, removal of listings from sale/lease and to any listing condition. Any square footage, dimensions, floor plans and/or technical data set forth are approximations and are subject to further elaboration/confirmation.

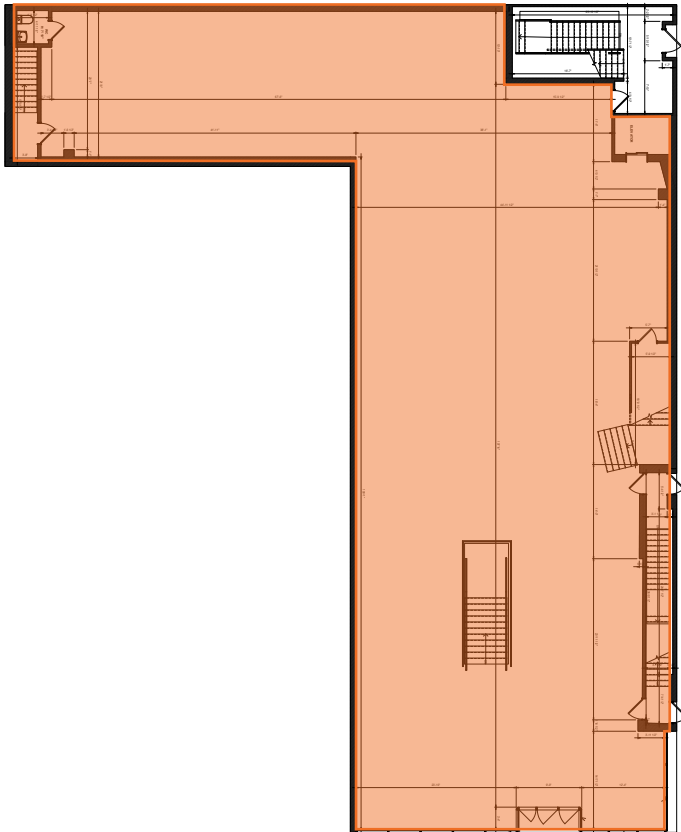


789 BROADWAY

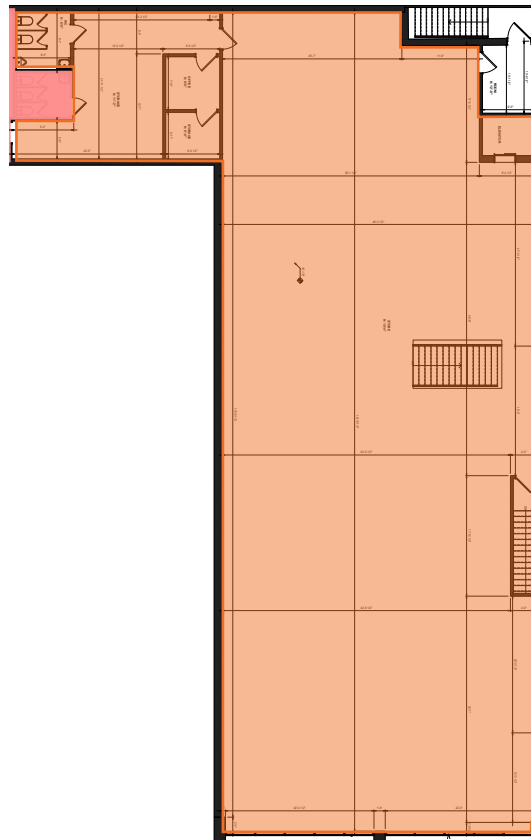
CORNER OF FAYETTE STREET | BUSHWICK

FLOOR PLANS:

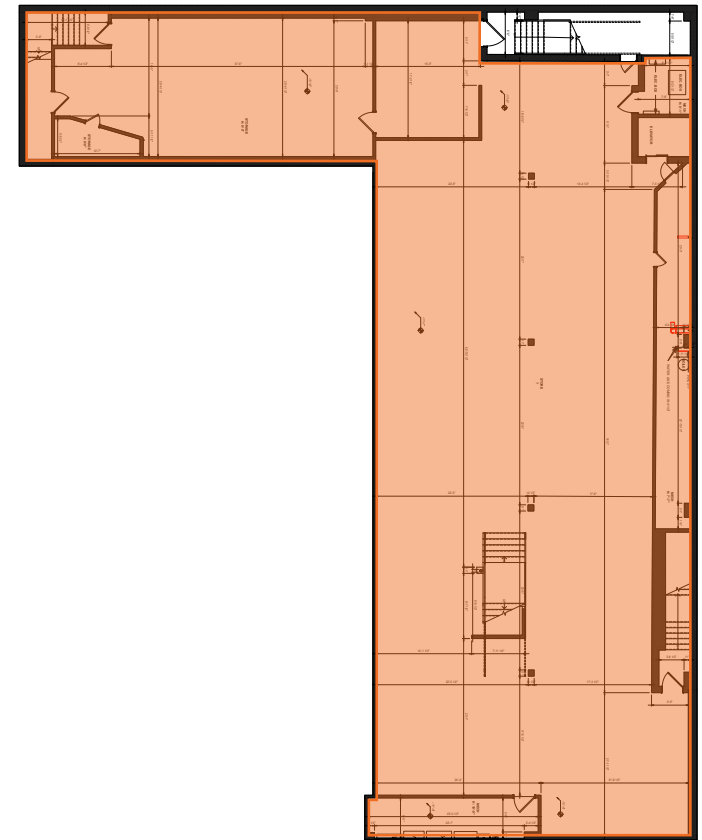
GROUND FLOOR - 7,500 SF



SECOND FLOOR - 7,000 SF



SELLING LOWER LEVEL - 7,500 SF



789 BROADWAY

CORNER OF FAYETTE STREET | BUSHWICK

FOR MORE INFORMATION,
PLEASE CONTACT:

MILES SABBAGH

646.894.3176 | Miles@ksrny.com

MARC SITT

917.757.8863 | MSitt@ksrny.com



All information supplied in this marketing presentation and/or flyer is from sources deemed reliable and is furnished subject to errors, omissions, modifications, removal of listings from sale/lease and to any listing condition. Any square footage, dimensions, floor plans and/or technical data set forth are approximations and are subject to further elaboration/confirmation.