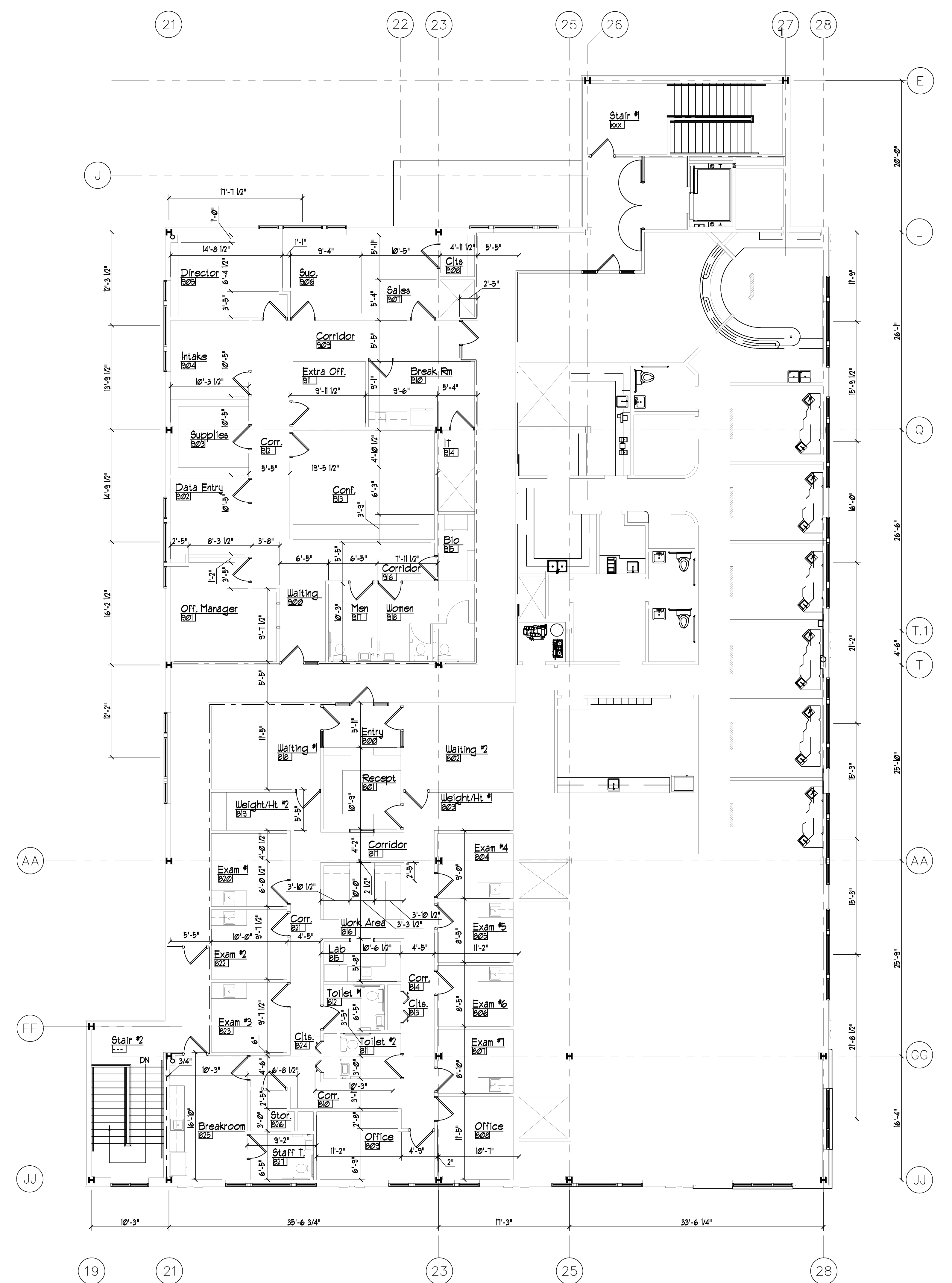


NOTES:
 1. INTERIOR WALL TYPE U-1 UNLESS OTHERWISE NOTED.
 2. COLUMN LINES DD AND EE ARE NOT USED.

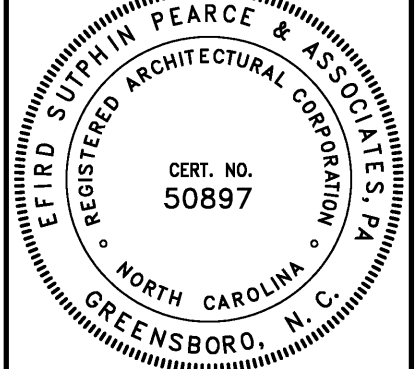
PROJECT NORTH
 1 URGENT CARE 2ND FLOOR PLAN
 A15 1/8" = 1'-0" (1:96)



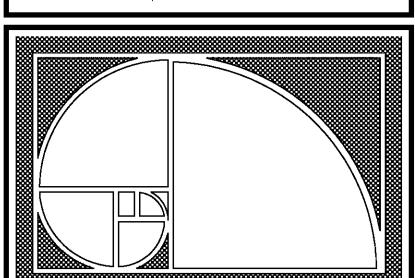
PROJECT NORTH
 2 URGENT CARE 2ND FLOOR PLAN
 A15 1/8" = 1'-0" (1:96)



HUGH E. SUTPHIN, JR. AA LIC. NO. 4710
 GREENSBORO, NORTH CAROLINA



EFRID SUTPHIN PEARCE & ASSOCIATES, PA
 REGISTERED ARCHITECTURAL CORPORATION
 CERT. NO. 50897
 GREENSBORO, N. C.



Efrid Sutphin Pearce
 & ASSOCIATES, PA
 ARCHITECTS ||| PLANNERS

310 East Sycamore St.
 Suite A
 Greensboro, NC 27401
 Phone (336) 273-0083
 Fax (336) 574-1916
 hugh@efridsutphin.com

YOUR VISION
 OUR MISSION

Kirkland Inc
 Horizon Medical Complex
 Dr Imran Haque and Dr Tanvir Chodri
 Fayetteville Street at East Presnell Street
 Asheboro, North Carolina

By Revision

▲	January 17, 2007
▲	March 16, 2007
▲	June 11, 2007
▲	June 18, 2007
▲	June 21, 2007

PROJECT NUMBER
 2006-007

DATE
 JUNE 2006

Sheet:
A1.5

Drawing Title: Urgent Care 2nd Floor Plan