



# 512&528 S WILMER AVE ANNISTON, AL

INDUSTRIAL PROPERTY  
FULLY LEASED

Ryan Jenkins  
VP of Dispositions  
[rjenkins@ironhornenterprises.com](mailto:rjenkins@ironhornenterprises.com)

OFFERING MEMORANDUM





# EXCLUSIVELY *PRESENTED BY*




## Ryan Jenkins


VP of Dispositions


 631-833-5152

 [Rjenkins@ironhornenterprises.com](mailto:Rjenkins@ironhornenterprises.com)

## IronHorn Enterprises

 315-214-8406

 [www.ironhornenterprises.com](http://www.ironhornenterprises.com)

 5912 N Burdick St,  
East Syracuse, NY 13057



## PROPERTY OVERVIEW

Executive Summary  
Investment Highlights

## FINANCIAL OVERVIEW

Financial Summary  
Rent Roll  
Tenant Summary

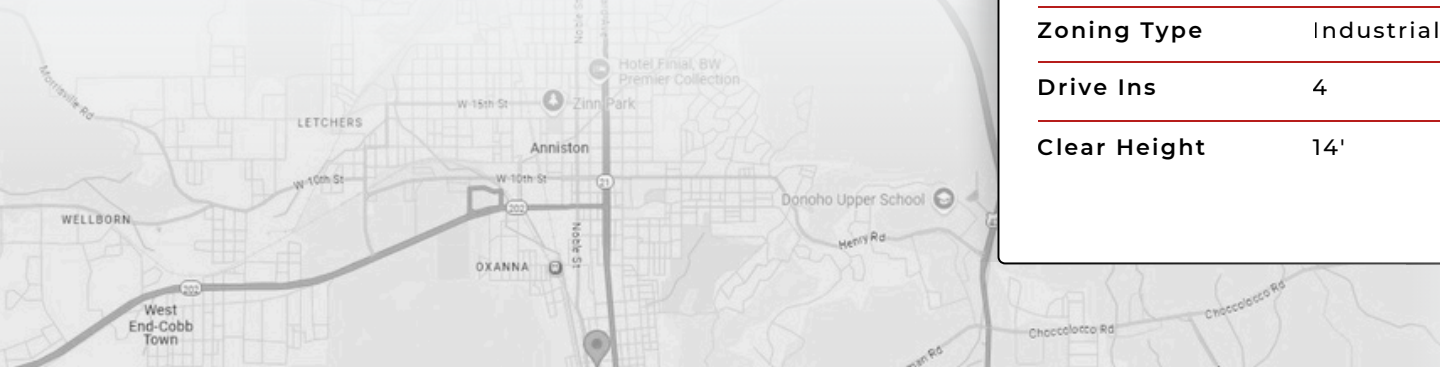
## LOCATION OVERVIEW

About Anniston, AL  
Demographics  
Map

# EXECUTIVE SUMMARY

The properties at 512 & 528 S Wilmer Ave in Anniston, AL offer a compelling investment sale opportunity on 1.94 acres with an approximately 16,952 SF transportation and maintenance facility. The site provides ample parking, 4 drive in doors, 14' clear height and a functional layout suitable for fleet operations, service users, or other industrial tenants. Its configuration supports efficient vehicle flow and operational versatility, enhancing long-term usability.

Positioned in the heart of Anniston's south side, the property benefits from strong accessibility and proximity to major local corridors and the regional transportation network. This strategic location boosts operational efficiency and tenant demand, making the asset an attractive option for investors seeking well-located industrial real estate.



## THE OFFERING

<b>Building SF</b>	16,952 SF
<b>Year Built</b>	1960/1963
<b>Lot Size (Acres)</b>	1.94
<b>Parcel ID</b>	2104172003044000 2104172003043000
<b>Zoning Type</b>	Industrial
<b>Drive Ins</b>	4
<b>Clear Height</b>	14'

Ryan Jenkins  
VP of Dispositions  
rjenkins@ironhornenterprises.com

# INVESTMENT HIGHLIGHTS



**Prime Location & Accessibility:** Located in the heart of Anniston's south side, the property enjoys strong connectivity to major local corridors and the broader regional transportation network, enhancing operational efficiency and tenant appeal.



**Expansive Space:** Situated on 1.94 acres with an approximately 16,952 SF building, the site provides ample room for vehicle parking, equipment staging, and operational growth.



**Strategic Features:** Multiple access points and a highly functional layout support efficient traffic flow, loading, and fleet movement—ideal for transportation-related or service-based businesses.



**Industrial Infrastructure:** Currently operating as a transportation and maintenance facility, the property offers established industrial amenities that accommodate a range of logistics, fleet, and light industrial operations.



**Zoning Advantage:** Industrial-friendly zoning supports a wide range of transportation, maintenance, and service-oriented uses, offering flexibility for both owner-users and future tenants.



# FINANCIAL SUMMARY

	In Place	Year 1	Year 2	Year 3	Year 4	Year 5
<b>GROSS REVENUE</b>						
BASE RENTAL REVENUE	\$99,728	\$101,411	\$104,346	\$107,367	\$110,476	\$113,677
TAX & INS	\$12,397	\$12,645	\$12,898	\$13,156	\$13,419	\$13,687
EFFECTIVE GROSS REVENUE	\$112,125	\$114,056	\$117,244	\$120,523	\$123,895	\$127,364
<b>OPERATING EXPENSES</b>						
PROPERTY TAX	\$4,085	\$4,167	\$4,250	\$4,335	\$4,422	\$4,510
INSURANCE	\$8,312	\$8,478	\$8,648	\$8,821	\$8,997	\$9,177
TOTAL OPERATING EXPENSES	\$12,397	\$12,645	\$12,898	\$13,156	\$13,419	\$13,687
NET OPERATING INCOME	\$99,728	\$101,411	\$104,346	\$107,367	\$110,476	\$113,677

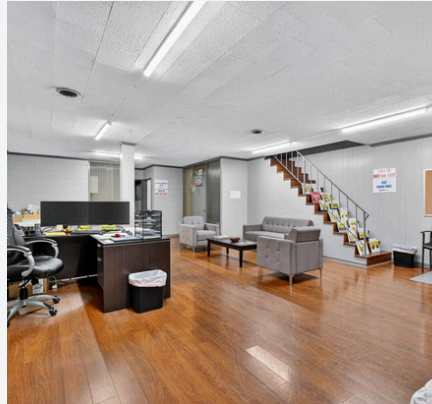
Ryan Jenkins  
VP of Dispositions  
rjenkins@ironhornerprises.com



# RENT ROLL

## 512&528 S WILMER AVE RENT ROLL

UNIT	TENANT NAME	SQFT	Annual Rent	Annual Rent/SQFT	Lease From	Lease To
Space 1	First Student, Inc.	9,000	\$89,116	\$9.90/sqft	06/01/2023	05/31/2028
Space 2	Bradshaw & Pitts LLC	7,952	\$10,612	\$1.33/sqft	08/01/2023	07/31/2028
TOTAL		16,952	\$99,728			



# TENANT SUMMARY



## **First Student, Inc.**

First Student Inc. is a leading provider of student transportation services in North America, operating a fleet of over 40,000 school buses. The company delivers safe, reliable, and efficient transportation to millions of students across the U.S. and Canada, serving school districts and educational institutions with a strong focus on safety, technology, and customer service

### **LEASE OVERVIEW**

Lease Type	Triple Net
Lease Commencement	06/01/2023
Lease Expiration	05/31/2028
Base Term Remaining	3 years
Options	Two (2) options to extend for five (5) years.
Rental Increase	3% Annually



## **Bradshaw & Pitts, LLC**

Bradshaw & Pitts, LLC, is a well-established general contracting firm located in northeastern Alabama; our seasoned staff has more than 50 years combined experience in the construction industry. Bradshaw & Pitts, LLC, has experienced steady growth since our company was formed, which we attribute to our commitment to provide quality services and the dedication of our staff. We have successfully completed projects in several states in the southeastern United States.

### **LEASE OVERVIEW**

Lease Type	Triple Net
Lease Commencement	08/01/2023
Lease Expiration	07/31/2028
Base Term Remaining	3 years
Rental Increase	2% Annually

Ryan Jenkins  
VP of Dispositions  
rjenkins@ironhornenterprises.com

# ABOUT ANNISTON, AL

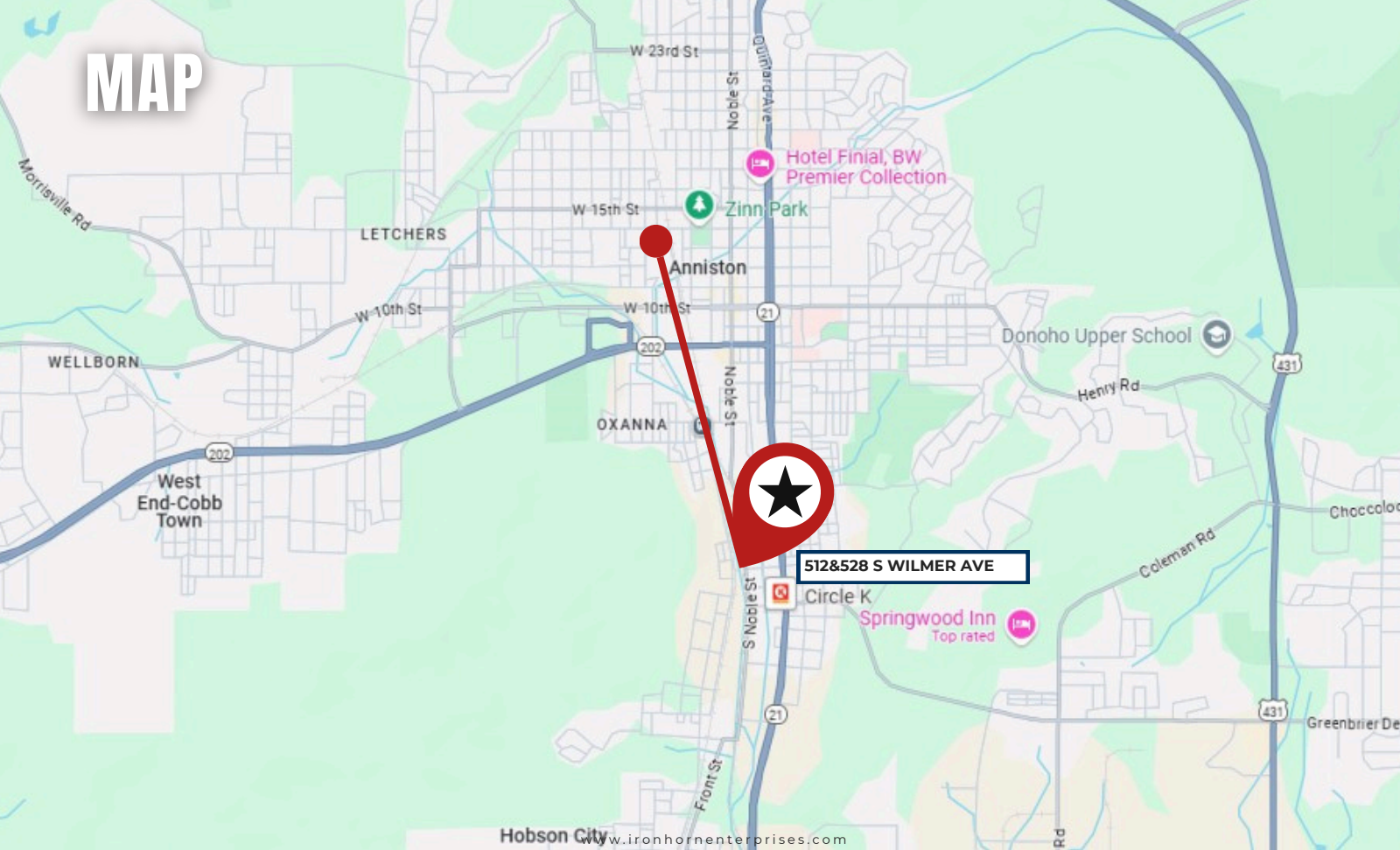
Anniston, AL, located in Calhoun County, is a growing commercial real estate market with a strong focus on industrial and transportation sectors.

The city's strategic location along major highways, including Interstate 20, enhances its accessibility for logistics and manufacturing businesses. With a mix of affordable industrial properties, Anniston is increasingly attracting businesses looking for cost-effective spaces with room for growth.

The market benefits from its established infrastructure, proximity to key regional markets, and availability of large parcels for development. Overall, Anniston presents solid opportunities for investors in industrial, retail, and commercial real estate.

<b>POPULATION</b>	<b>1-MILE</b>	<b>3-MILE</b>	<b>5-MILE</b>
<b>2029 PROJECTION</b>	3,932	24,963	45,617
<b>2024 ESTIMATE</b>	3,898	24,942	45,993
<b>2020 CENSUS</b>	3,535	23,644	45,548
<b>HOUSEHOLD</b>	<b>1-MILE</b>	<b>3-MILE</b>	<b>5-MILE</b>
<b>2029 PROJECTION</b>	1,421	10,550	18,885
<b>2024 ESTIMATE</b>	1,404	10,544	19,051
<b>2020 CENSUS</b>	1,256	10,021	18,914
<b>INCOME</b>	<b>1-MILE</b>	<b>3-MILE</b>	<b>5-MILE</b>
<b>AVG HOUSEHOLD INCOME</b>	46,795	52,981	60,037

# MAP



W 23rd St

Noble St  
Gulfward Ave

Hotel Final, BW  
Premier Collection

W 15th St

Zinn Park

Anniston

LETCHERS

W 10th St

W 10th St

Donoho Upper School

WELLBORN

202

West  
End-Cobb  
Town

202

OXANNA

Noble St

431

Henry Rd



512&528 S WILMER AVE



Circle K

Springwood Inn  
Top rated

Coleman Rd

Choccoloc

Greenbrier De

# 512&528 S WILMER AVE | ANNISTON, AL 36201

OFFERING MEMORANDUM

---

## EXCLUSIVELY LISTED BY



**Ryan Jenkins**

VP of Dispositions

📞 631-833-5152

✉️ [rjenkins@ironhornenterprises.com](mailto:rjenkins@ironhornenterprises.com)

### IronHorn Enterprises

📞 315-214-8406

🌐 [www.ironhornenterprises.com](http://www.ironhornenterprises.com)

📍 5912 N Burdick St,  
East Syracuse, NY 13057



## CONFIDENTIALITY AGREEMENT & DISCLAIMER

**CONFIDENTIALITY STATEMENT** The information contained in the following offering memorandum is proprietary and strictly confidential to IRONHORN ENTERPRISES and its related entities. It is intended to be reviewed only by the intended recipient from IRONHORN ENTERPRISES and it should not be made available to any other person or entity without the explicit written consent of IRONHORN ENTERPRISES. By taking possession of and reviewing the information contained herein, the recipient agrees to hold and treat all such information in the strictest confidence. The recipient further agrees that the recipient will not photocopy or duplicate any part of the offering memorandum. This offering memorandum has been prepared to provide summary, unverified financial and physical information to prospective purchasers in order to establish a preliminary level of interest in the subject property. The information contained herein is not intended as a substitute for due diligence by the recipient or any interested party in the subject property. IRONHORN ENTERPRISES has not made any investigation, makes no warranty or representation with respect to the income and expenses for the subject property, the future projected financial performance of the property, the size and square footage of the property, capital improvements, the presence or absence of contaminating substances, PCBs or asbestos, the compliance with local, state and federal regulations, the physical condition of the improvements thereon, the financial condition or business prospects of any tenant, or any tenant's plans or intentions to continue its occupancy of the subject property. The information contained in this offering memorandum has been obtained from sources that are believed to be reliable; however, IRONHORN ENTERPRISES has not verified, and will not verify nor has any duty to verify for the recipient, any of the information contained herein, nor has IRONHORN ENTERPRISES conducted any investigation regarding these matters and makes no warranty or representation whatsoever regarding the accuracy or completeness of the information provided. All potential buyers must take appropriate measures to verify all of the information set forth herein. Prospective buyers shall be responsible for their costs and expenses of investigating the subject property. Prospective buyers shall not use any of the information contained within the offering memorandum to contact any tenant unless given express permission from IRONHORN ENTERPRISES. PROPERTY SHOWINGS ARE BY APPOINTMENT ONLY. PLEASE CONTACT THE IRONHORN ENTERPRISES LISTED AGENT FOR MORE INFORMATION.