

For Lease

Retail and Office Suites Located on Dayton Valley Rd. along Carson River



230-246 Dayton Valley Rd.
Dayton NV, 89403

Andie Wilson Bonkowski, CCIM
Executive Vice President
775.721.2980
abonkowski@logicCRE.com
BS.0144325

Mallory LaBranch, MBA
Associate
775.220.6600
mlabbranch@logicCRE.com
BS.0146684

Blaise LaBranch
Associate
775.379.9398
blabbranch@logicCRE.com
S.0200016

Listing Snapshot



\$1.30 - \$1.60 PSF/Mo. NNN
Lease Rate



± 158 - 1,680 SF
Available Square Footage

Property Highlights

Discover exceptional retail and office opportunities at the prestigious River Vista Commercial Center. With flexible suite sizes ranging from ± 158 to 1,680 square feet, these versatile vanilla shell spaces provide the perfect canvas for your customized build-out vision.

Located along the picturesque Carson River on Dayton Valley Road, this Class-A development combines professional elegance with natural beauty. The prime location offers excellent visibility and accessibility. Whether you're expanding your retail presence or seeking a central office location, River Vista Commercial Center delivers the professional space and scenic surroundings your business deserves.

Demographics

	1-mile	3-mile	5-mile
2025 Population	518	15,974	18,224
2025 Average Household Income	\$115,528	\$107,964	\$107,365
2025 Total Households	207	6,244	7,168



Floor Plan | Building A, Ste. 102
244 Dayton Valley Rd., Ste. 102



\$1.30 PSF + \$0.25 NNNs
Lease Rate



± 1,265 SF
Available Square Footage



Floor Plan | Building A, Vestibule
244 Dayton Valley Rd.



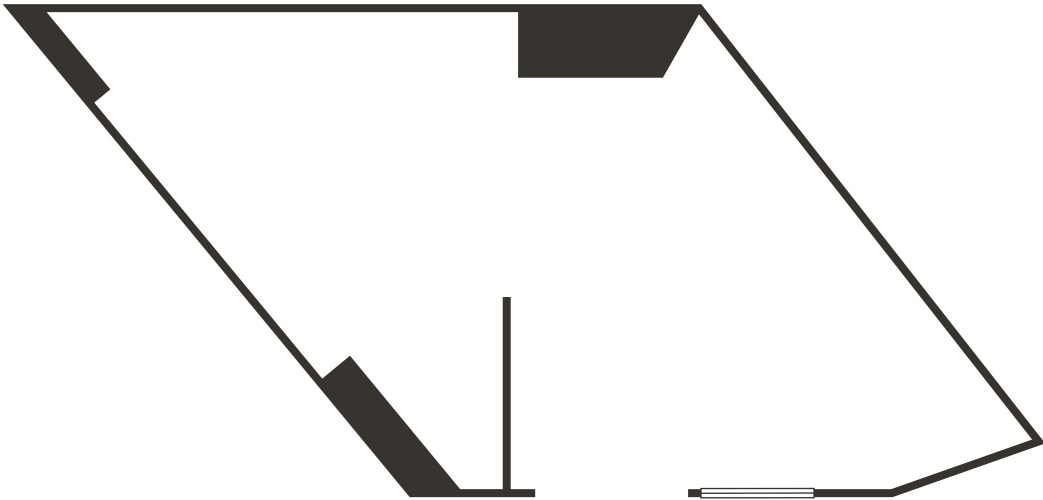
\$750/Mo. Full Service
Lease Rate



**ATM or Vending
Machine Location**



Fully Enclosed



Floor Plan | Building C, Ste. 102-C
246 Dayton Valley Rd, Ste. 102-C



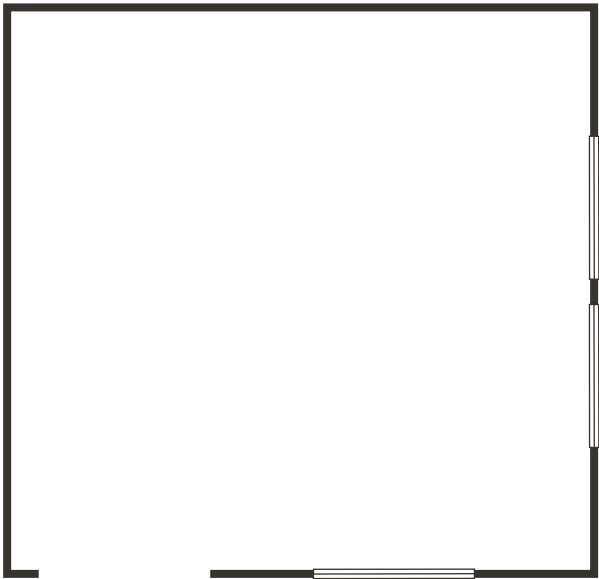
\$1.30 PSF + \$0.25 NNNs
Lease Rate



± 158 SF
Available Square Footage



**Entry through
shared hallway**



Floor Plan | Building C, Ste. 104
246 Dayton Valley Rd., Ste. 104



\$1.30 PSF + \$0.25 NNNs
Lease Rate



± 1,680 SF
Available Square Footage



Vanilla Shell



Site Plan | Build to Suit
Drive-Thru



\$1.60 PSF + \$0.25 NNNs

Lease Rate

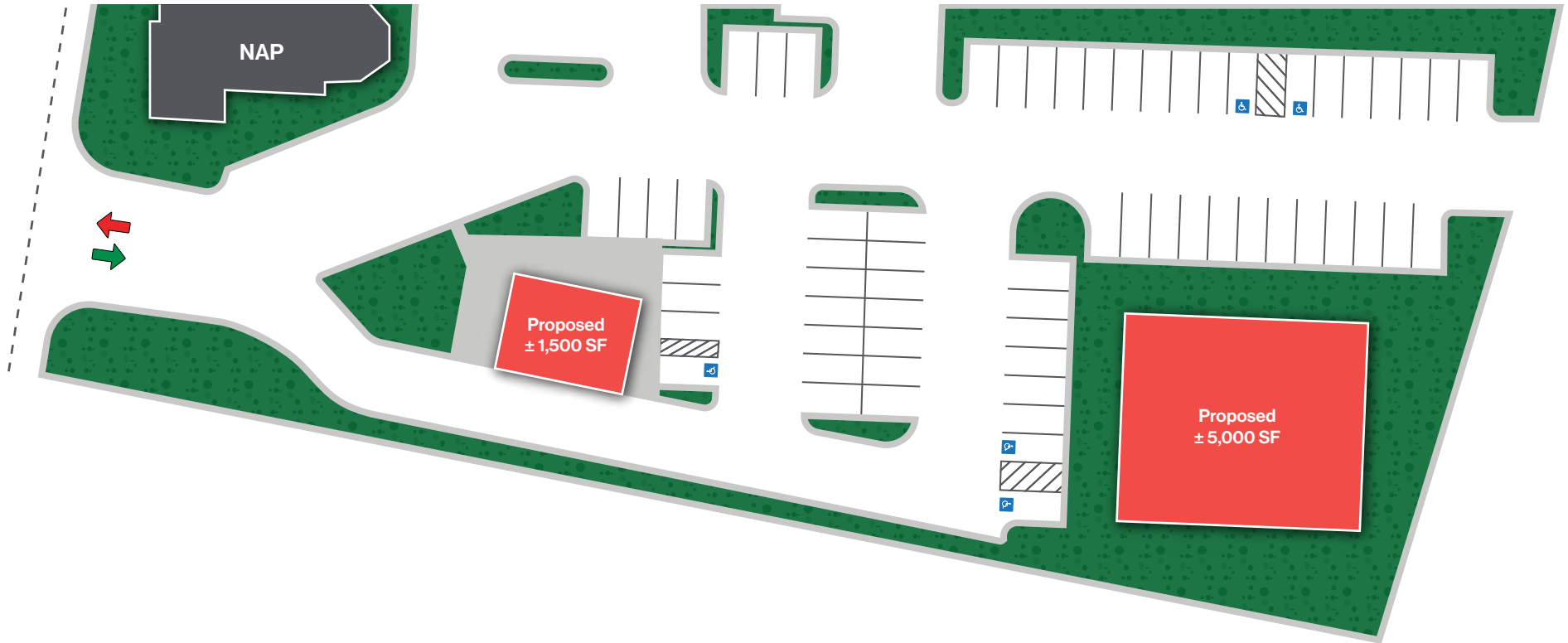


Drive-thru or General Retail

Built-to-Suit

Proposed

NAP



Vicinity Map


The trade area consists of ± 18,224 residents with an average household income of ± \$107,365 within a 5-mile radius


Amenities within a 5-mile radius

- 1 Smiths**
-2.5 miles
- 2 Grocery Outlet**
-3.1 miles
- 3 Gold Ranch Casino**
-1.0 mile
- 4 Dayton Valley Library**
-0.9 miles
- 5 Dayton High School**
-1.0 mile





 Schools
**Dayton
Elementary School**

 Parks
Como Park

AVAILABLE
± 158 - 1,680 SF

Old Como Rd.

Dayton Valley Rd.



Key Figures of Northern Nevada

Northern Nevada is experiencing rapid population and employment growth, with Nevada ranked 8th in the nation for annual population increases. The region is a hub for technological advancement, boasting the world's largest data center, SuperNAP Reno. It is also home to the Tahoe-Reno Industrial Center, the largest industrial park globally, attracting major companies and driving economic expansion. As the most digitally connected state in the U.S., Nevada continues to be a leader in innovation and infrastructure development.



2024
Population

627_k

Northern Nevada Population
Includes Carson City, Plus Washoe, Storey, and Lyon Counties



2024
Travel

4.8_{MM}

Annual Visitors Reno-Tahoe Area



2024
Visitors

\$1.8_B

Gross Gaming Revenue in Northern Nevada

203%

Manufacturing Employment Growth
1990-2024

10%

2024 Summer Airport
Passenger Increases

479_k

Hotel Rooms Available in
Reno-Tahoe Area

24%

Reno/Sparks Employment
Growth in Past 5 Years

58.9_k

Trade, Transportation and Utilities,
Largest Employment Sector 2024

53%

Percentage of
Visitors from California

84%

Visitors Would Recommend
Reno-Tahoe for Travel



Why Nevada

Considered the 8th most business-friendly state, according to EDAWN, Nevada offers a very low-regulation environment. This platform offers a variety of incentives to help qualifying companies make the decision to do business in the state of Nevada. Both Money and Forbes Magazines have named the Silver State one of the most business-friendly in the country.

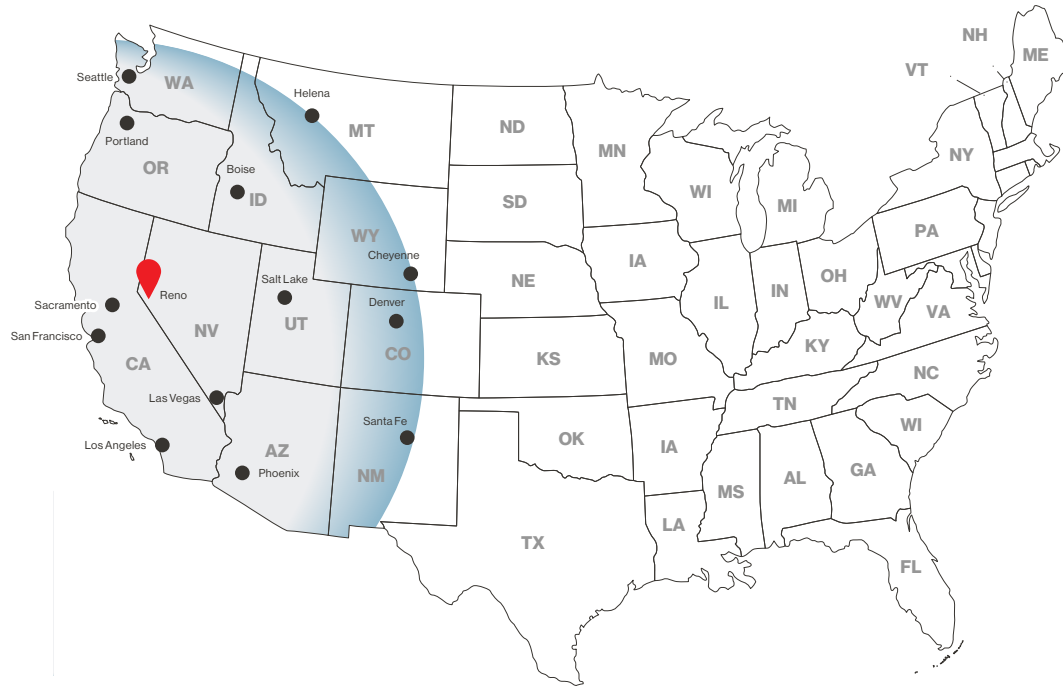
Nevada ranks as the 17th best state in the Tax Foundation's 2024 State Business Tax Climate Index. This index is an independent ranking of states in five areas of taxation: corporate taxes, individual income taxes, sales taxes, unemployment insurance taxes, and taxes on property, including residential and commercial property.

In comparison, the Tax Foundation's 2024 Tax Climate Index rankings for our neighboring states are significant: California ranks 48th, Arizona 15th, Idaho 11th, Oregon 30th, and Utah 16th.

Tax Free Haven

- ⊖ No Corporate Income Tax
- ⊖ No Corporate Shares Tax
- ⊖ No Franchise Tax
- ⊖ No Personal Income Tax
- ⊖ No Franchise Tax on Income
- ⊖ No Inheritance or Gift Tax
- ⊖ No Unitary Tax
- ⊖ No Estate Tax

Northern Nevada Transit Times



1-Day Truck Service

- San Francisco, CA
- Sacramento, CA
- Los Angeles, CA
- Portland, OR
- Seattle, WA
- Boise, ID
- Salt Lake, UT
- Las Vegas, NV
- Phoenix, AZ

2-Day Truck Service

- Helena, MT
- Cheyenne, WY
- Denver, CO
- Santa Fe, NM



60MM Customers

1-Day Truck Service from Northern Nevada



Power Costs

Nevada: 53% Less Than California, 25% Below U.S. Average

Nevada Relocation: Tax Incentives for Businesses

- Sales & Use Tax Reduction
- Business Tax Cut
- Personal Property Tax Break
- Recycling Property Tax Discount
- Aviation Parts Tax Relief
- Data Center Tax Savings

Opportunity Zones

61 Areas in Nevada Offer Tax Benefits on Capital Gains, with Deferrals, Reductions up to 15%, and Tax-Free Appreciation after 10 Years

A Look at Northern Nevada

Washoe County

Washoe County, situated in the northwest corner of Nevada along the California and Oregon borders, is the second most populous county in the state, boasting **over 500,106 residents**. The county's southwest corner meets the northeast corner of Lake Tahoe, while both Washoe Lake and Pyramid Lake are also encompassed within its borders.

City of Reno

Named as the US's #1 small city for 2022, Reno attracts nearly **4.8MM visitors** annually with events like the Reno Rodeo, Hot August Nights, Reno Air Races, and Street Vibrations. The city has undergone a renaissance, boasting a thriving tech presence and a dynamic arts community, featuring street murals and sculptures. Industrial expansions in northern Nevada, especially in the Tahoe-Reno Industrial Center (TRIC) and eastern Sparks, along with marijuana legalization, have drawn investors and manufacturers from neighboring states.

University of Nevada, Reno

The University of Nevada, Reno, established in 1874 and based in Reno since 1885, comprises 13 colleges and schools, **offering more than 460 Tier-1 degree programs** and averaging over 20,945 students annually. A notable tradition is the Reno-UNLV rivalry, highlighted by the competition for the Fremont cannon. This replica cannon is awarded to the winner of the annual Reno-UNLV football game and is painted in the victorious team's colors, blue or red.

Lake Tahoe

Lake Tahoe, located less than 25 miles from downtown Reno, serves as a year-round destination for outdoor enthusiasts. It offers water sports in the summer and transforms into a winter sports haven with North America's largest concentration of ski resorts, receiving 400 inches of snow annually.



A Look at Northern Nevada

The Neon Line

The Reno Neon Line District, an emerging submarket, is rapidly expanding with the acquisition and redevelopment of properties west of downtown Reno. Led by local developer Jacobs Entertainment, this submarket revitalization blends commercial spaces and housing with a vibrant arts and entertainment scene. Spanning from West St. to Keystone Ave., and from I-80 to W. 2nd St., the Neon Line District aims to redefine urban living and leisure in Reno.

Virginia Street Project

The Virginia Street Revitalization Project has been recently completed providing a safe and seamless connection between UNR, downtown, and MidTown Reno. The Regional Transportation Commission (RTC) of Washoe County and Sierra Nevada Construction (SNC) partnered on the project which allows for increased pedestrian safety with expanded sidewalks, improved bike lines, pedestrian ramps, and ADA-compliant crosswalks. The area manages vehicle traffic flow with dual one-way traffic lanes, bus-only lanes, and enclosed bus stops.

MidTown

Over the past five years, MidTown has transformed into a sought-after destination for investors, who are infusing modern art and architecture into existing buildings. This revitalization is not only enhancing the aesthetic appeal but also bolstering the Reno economy. By fostering collaboration between entrepreneurs and business developers through a blend of redeveloped commercial spaces and residential conversions, the MidTown district is driving economic growth. Additionally, annual events organized by retail and office users are fostering community engagement, attracting residents from Reno and Sparks alike.

Greater Nevada Field

Greater Nevada Field serves as the home stadium for the Reno Aces Minor League Baseball team, the Triple-A affiliate of the Arizona Diamondbacks, since their inaugural season in 2009.



A Look at Northern Nevada

TRIC

The Tahoe-Reno Industrial Center (TRIC), the world's largest industrial park at **over 15,000 acres**, lies just nine miles east of Reno/Sparks. Accessible via I-80 and Hwy. 50, thanks to the USA Parkway expansion into Silver Springs, TRIC offers expedited shipping to seven western states within a day and the remaining four within two days.

SouthEast Connector

Completed in 2018, the SouthEast Connector offers an alternative transportation route between east Sparks and south Reno, comprising a new 5.5-mile arterial road, seven bridges, two signalized intersections, and a multi-use path for recreational users. This new roadway serves as a bypass from the congested US-395/I-580 freeway and the southwest section of McCarran Blvd.

Carson City

Carson City, the capital of Nevada, lies just south of Washoe County and boasts an estimated **population of 57,978 in 2024**. During the day, the population swells to over 65,000, driven by government employees commuting from Washoe and Douglas counties. Recent downtown renovations have spurred business growth and foot traffic, complementing Carson City's rich history and scenic allure, which consistently attract tourists year-round.

Douglas County

Douglas County, positioned along the Nevada/California border just south of Carson City, encompasses the towns of Minden, Gardnerville, and Genoa, hosting a **population exceeding 49,311 residents**. The area's ample land has attracted numerous manufacturing companies, such as Starbucks Roasting Plant, GE, and North Sails, establishing a robust industrial presence in the region.



LOGIC Commercial Real Estate

Specializing in Brokerage and Receivership Services



Join our email list and
connect with us on LinkedIn

The information herein was obtained from sources deemed reliable; however LOGIC Commercial Real Estate makes no guarantees, warranties or representation as to the completeness or accuracy thereof.

For inquiries please reach out to our team.

Andie Wilson Bonkowski, CCIM

Executive Vice President
775.721.2980
abonkowski@logicCRE.com
BS.0144325

Mallory LaBranch, MBA

Associate
775.220.6600
mlabranche@logicCRE.com
BS.0146684

Blaise LaBranch

Associate
775.379.9398
blabranche@logicCRE.com
S.0200016