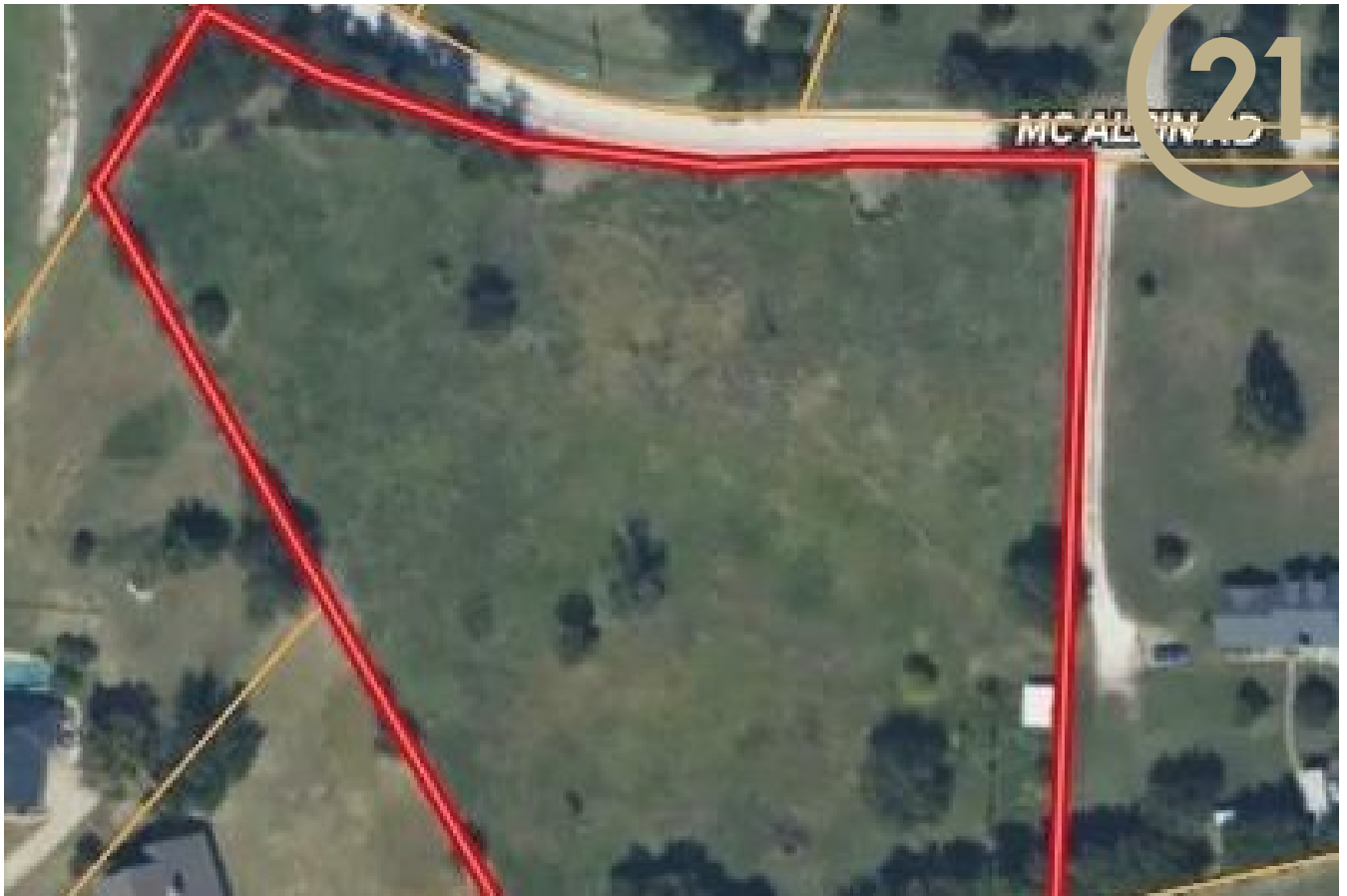




ON THE MARKET



## 00 MC ALPIN ROAD MIDLOTHIAN 76065

This expansive 4.224 acre parcel in Midlothian, TX offers the ideal canvas for realizing your dream home aspirations. With its captivating views and secure fencing, it provides the perfect blend of serenity and security. Whether you envision a tranquil retreat or a luxurious estate, this land presents a rare opportunity to create a truly bespoke living space tailored to your desires.

**\$450,000**

**MLS# 20521373**

Lot: **4.22 acres**



**JAMIE WICKLIFFE**

Real Estate Salesperson

0368339 TX

Mobile (214) 676-2896

[jamiewickliffe@judgefite.com](mailto:jamiewickliffe@judgefite.com) | <http://jamiewickliffe-judgefite.sites.c21.homes>

**CENTURY 21 JUDGE FITE COMPANY** 121 N. 8th Street, Midlothian, TX 76065

**CENTURY 21.**  
Judge Fite Company



© 2024 Century 21 Real Estate LLC. All rights reserved. CENTURY 21®, the CENTURY 21 Logo and C21® are registered service marks owned by Century 21 Real Estate LLC. Century 21 Real Estate LLC fully supports the principles of the Fair Housing Act and the Equal Opportunity Act. Each office is independently owned and operated. If your property is not listed with a real estate broker affiliated with the CENTURY 21 Brand, please disregard. It is not our intention to solicit the offerings of other real estate brokers.