

# WAREHOUSE/STORAGE SPACE

3105 Industrial Drive  
Johnson City, TN 37604

## Location

Just off West Market Street on Industrial Drive in West Johnson City

## Available for Lease

Suite 6: 811 SF warehouse/storage \$650/month NNN

- Free-standing warehouse/storage building
- 12x14' roll-up door with garage opener
- Space is heated
- 17' ceilings
- Ideal for RV or boat storage

## Highlights

Proximal to Walmart Supercenter on W Market St  
Approx. 1.7 miles from Johnson City Medical Center  
Approx. 3.5 miles from I-26, exit 23

## Demographics

(2024 Est.)	5 mile	15 mile	25 mile
Population	81,289	241,989	456,869
Median HH Income	\$58,333	\$63,592	\$58,100
Median Age	38.1	43.3	44.6

## Contact

**John Speropulos**, CCIM, SIOR  
john@mitchcox.com

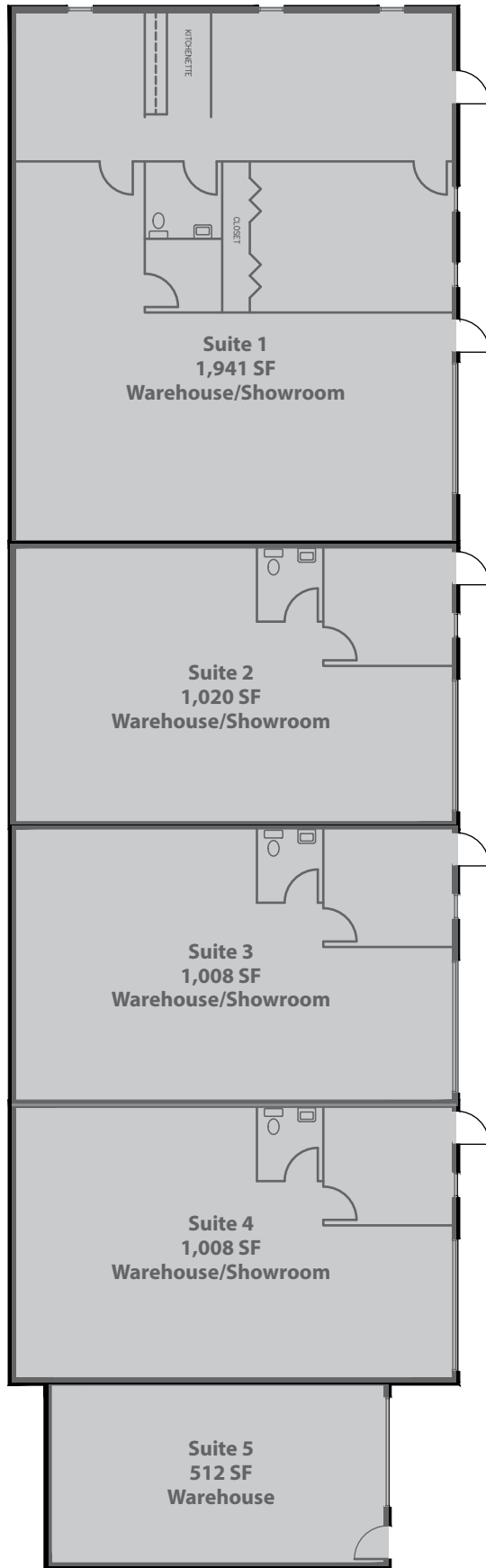
**Marc Murphy**, CCIM  
mmurphy@mitchcox.com

📞 423-282-6582 | 📠 423-282-5903  
www.mitchcox.com  
**Owner/Agent**



**MITCH COX**  
REALTOR, INC.





 **Available**







Subject

W Market St

W Market St

HARBOR  
FREIGHT  
TOOLS

SONIC

Freight & Logistics

O'Reilly

DISCOUNT  
TIRE

CALIBER  
COLLISION

TIDAL  
WAVE

3 RIVERS  
Car Wash

Walmart

ATMOS  
energy

UNIVERSAL  
WINE SPIRITS

JIMS

Ways to  
Riches

Milux

DOLLAR TREE

Best Buy

HACHI MAI

Lendmark

Great Clips

GameStop

Off Leash Boutique

SALE

Don Cherry's





**MITCH COX**  
REALTOR, INC.

2304 Silverdale Drive, Suite 200, Johnson City, TN 37601  
423-282-6582 (o) 423-282-5903 (f) [www.mitchcox.com](http://www.mitchcox.com)