

**HORIZON CORPORATE CENTER**  
1000 CRAWFORD PLACE, MOUNT LAUREL, NJ



**FREE RENT UNTIL 1/1/2025 -  
LEASING INCENTIVE OFFERED  
ON DIRECT LEASES ONLY!**

(subject to qualifying terms and conditions.  
Tenant pays electric & janitorial during  
abatement period)



**PRIME OFFICE SPACE  
JUST OFF ROUTE 73**

SUITES FOR  
LEASE FROM  
**1,522 to  
2,281 SF**



**CLICK HERE FOR A  
VIRTUAL TOUR**

LEASE RATE  
**\$19.00 PSF**  
+ ELECTRIC & JANITORIAL

**NAIMertz**

NAI Mertz | 21 Roland Avenue  
Mount Laurel, NJ 08054  
+1 856 234 9600 | [naimertz.com](http://naimertz.com)

**FOR MORE INFORMATION**

Rebecca Ting, SIOR

☎ +1 856 234 9600 ext 206  
✉ [rebecca.ting@naimertz.com](mailto:rebecca.ting@naimertz.com)

Julie Kronfeld, SIOR

☎ +1 856 802 6516  
✉ [julie.kronfeld@naimertz.com](mailto:julie.kronfeld@naimertz.com)

# CURRENT AVAILABILITIES

**1000 CRAWFORD PLACE**  
MOUNT LAUREL | NEW JERSEY

**FIRST FLOOR** SF  
SUITE 140 - LEASING INCENTIVE 1,522 [CLICK HERE FOR VIRTUAL TOUR](#)

**SECOND FLOOR** SF  
SUITE 220 1,938 AVAILABLE FOR SUBLEASE

**THIRD FLOOR** SF  
SUITE 360 - LEASING INCENTIVE 2,281 [CLICK HERE FOR VIRTUAL TOUR](#)

**FOURTH FLOOR** FULLY LEASED

## PROPERTY DESCRIPTION

Office suite availability within this four-story, 39,445 SF Class 'A' office building. Take advantage of this opportunity to lock up a long-term lease at one of the area's premier addresses!

## FOR MORE INFORMATION



Rebecca Ting, SIOR  
☎ +1 856 234 9600 ext 206  
✉ rebecca.ting@naimertz.com

Julie Kronfeld, SIOR  
☎ +1 856 802 6516  
✉ julie.kronfeld@naimertz.com



**SUITE 140**



**SUITE 360**

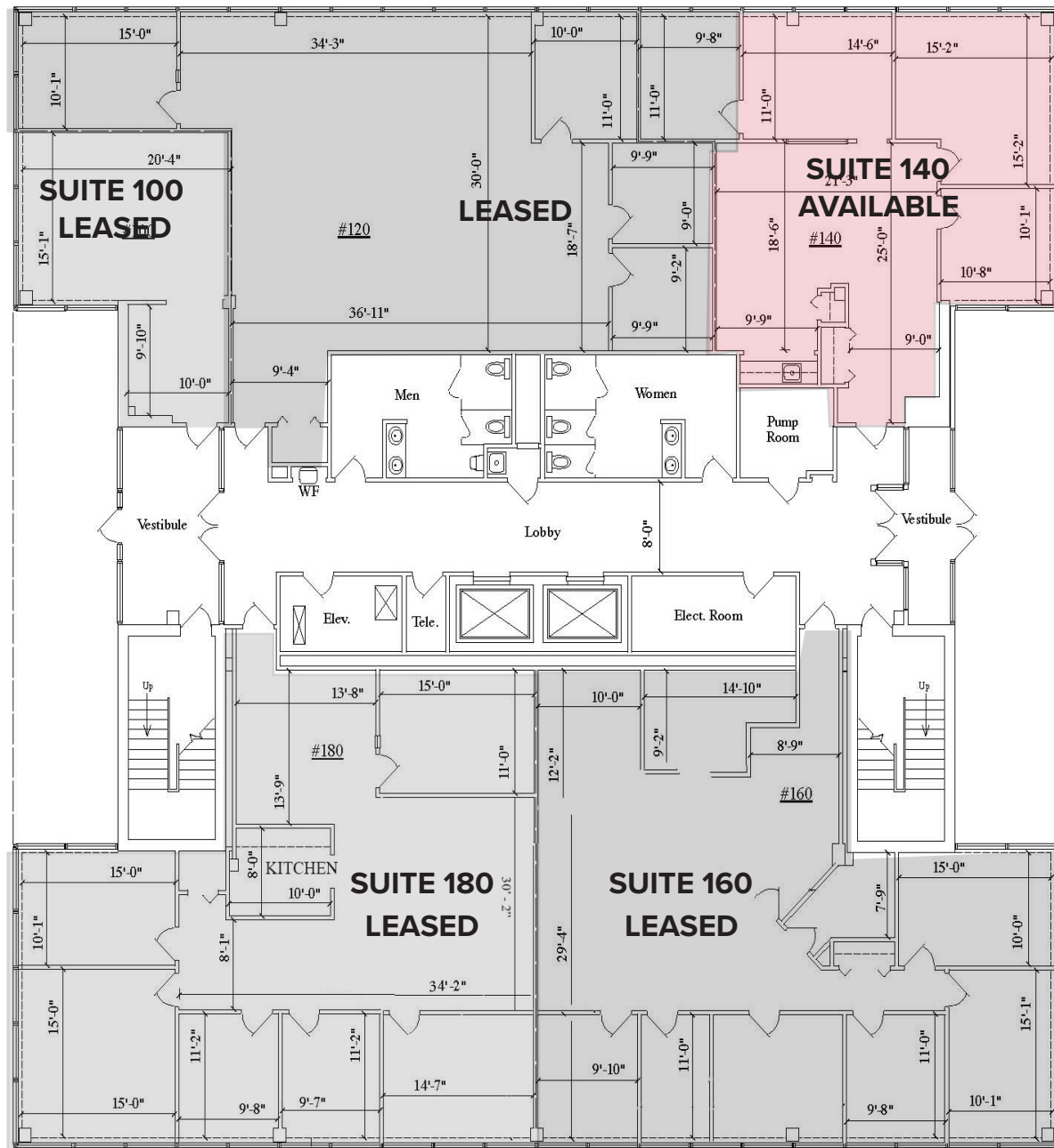
**LEASE RATE**  
**\$19.00 PSF**  
**+ ELECTRIC & JANITORIAL**

**IDEALLY LOCATED**  
**SUBURBAN**  
**OFFICE SPACE**



**3RD FLOOR HALL**

## FIRST FLOOR



SUITE 100  
548 SQ. FT.

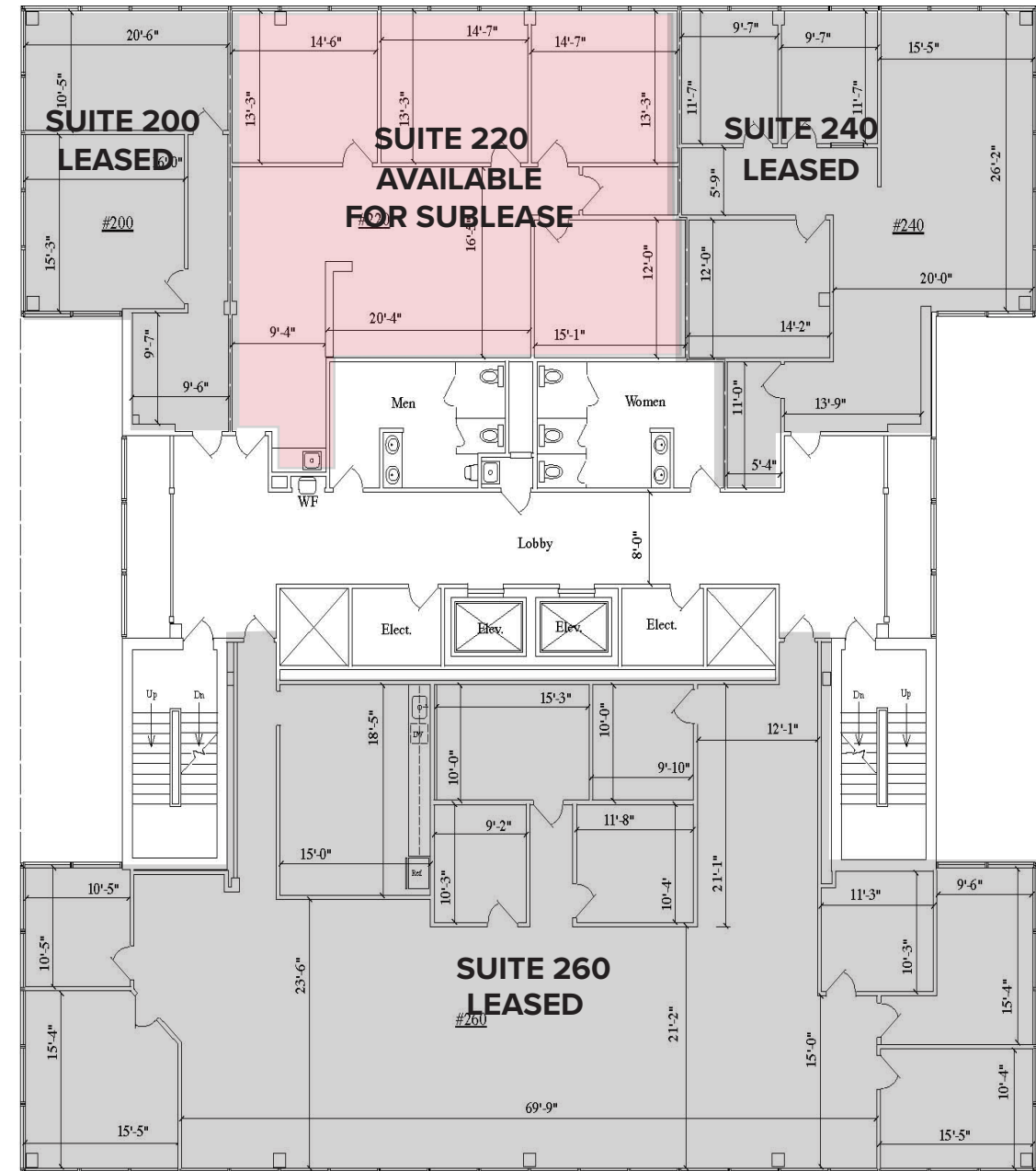
SUITE 120  
2,122 SQ. FT.

SUITE 140  
1,522 SQ. FT.

SUITE 160  
2,412 SQ. FT.

SUITE 180  
2,412 SQ. FT.

## SECOND FLOOR



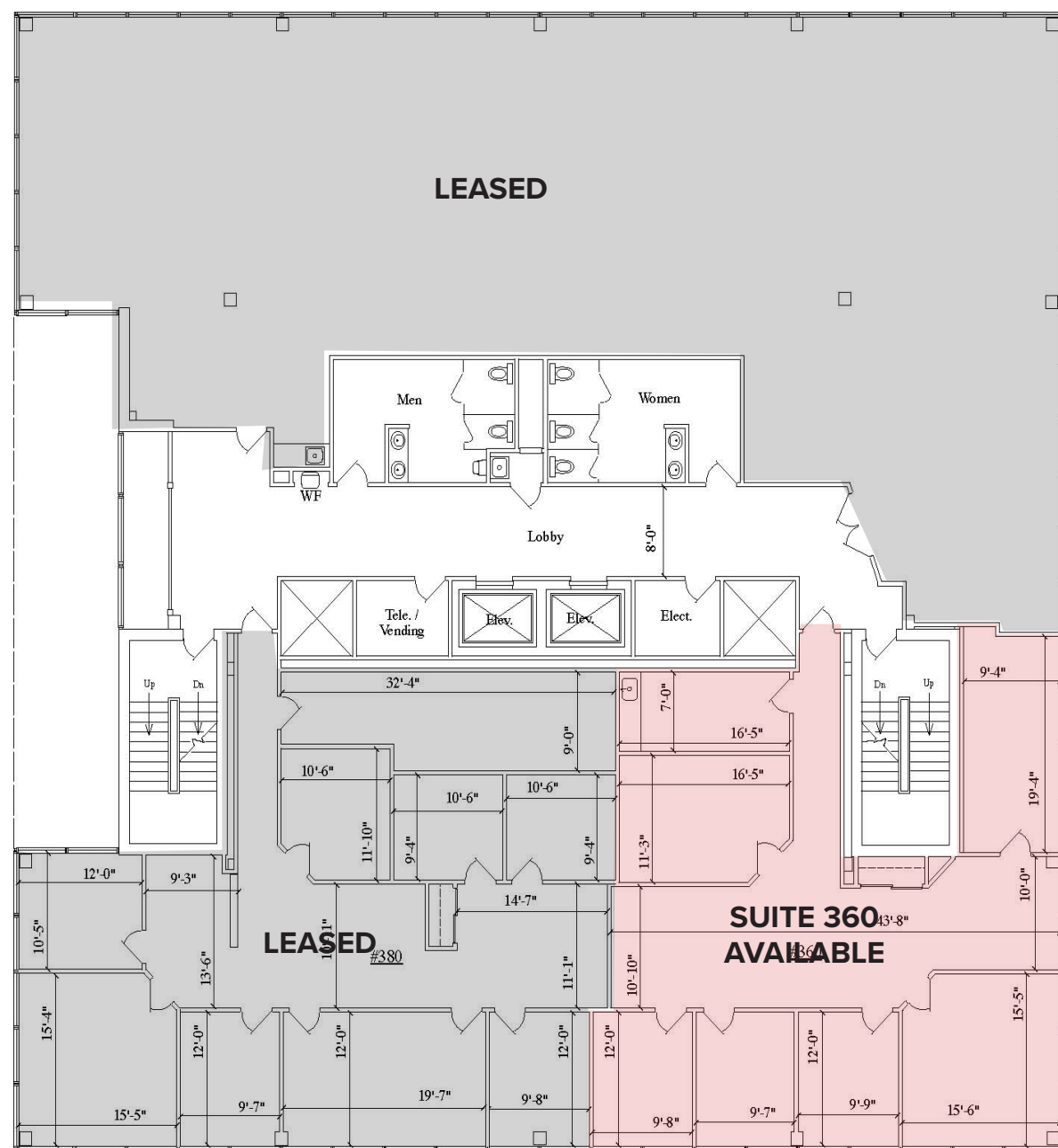
SUITE 200  
858 SQ. FT.

SUITE 220  
1,938 SQ. FT.

SUITE 240  
1,579 SQ. FT.

SUITE 260  
4,825 SQ. FT.

## THIRD FLOOR



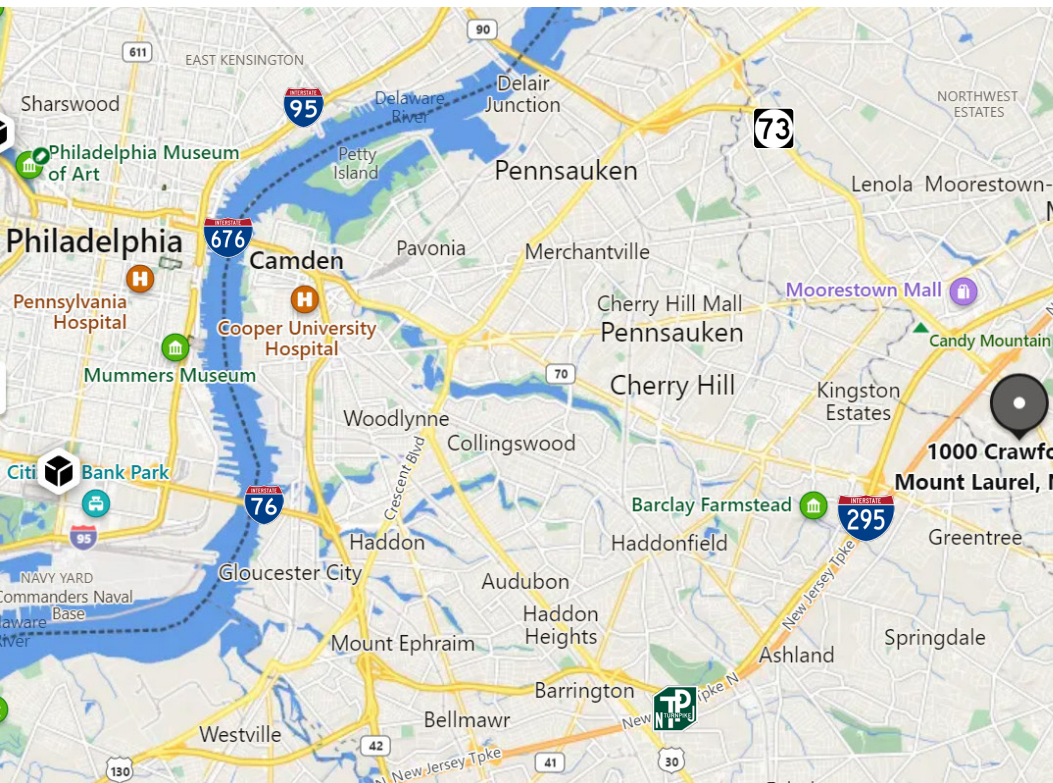
SUITE 360  
2,281 SQ. FT.

SUITE 380  
2,770 SQ. FT.



**1000 CRAWFORD PLACE**

**MOUNT LAUREL, NJ 08054**



**LOCATION INFORMATION**

- Located just off Route 73 in Horizon Corporate Center
- Minutes from NJ Turnpike (Exit 4), I-295 (Exit 34) and Routes 38 & 70
- Within 25 minutes Center City Philadelphia and Philadelphia International Airport



NAI Mertz | 21 Roland Avenue  
Mount Laurel, NJ 08054  
+1 856 234 9600 | [naimertz.com](http://naimertz.com)

**FOR MORE INFORMATION**

Rebecca Ting, SIOR  
☎ +1 856 234 9600 ext 206  
✉ [rebecca.ting@naimertz.com](mailto:rebecca.ting@naimertz.com)

Julie Kronfeld, SIOR  
☎ +1 856 802 6516  
✉ [julie.kronfeld@naimertz.com](mailto:julie.kronfeld@naimertz.com)