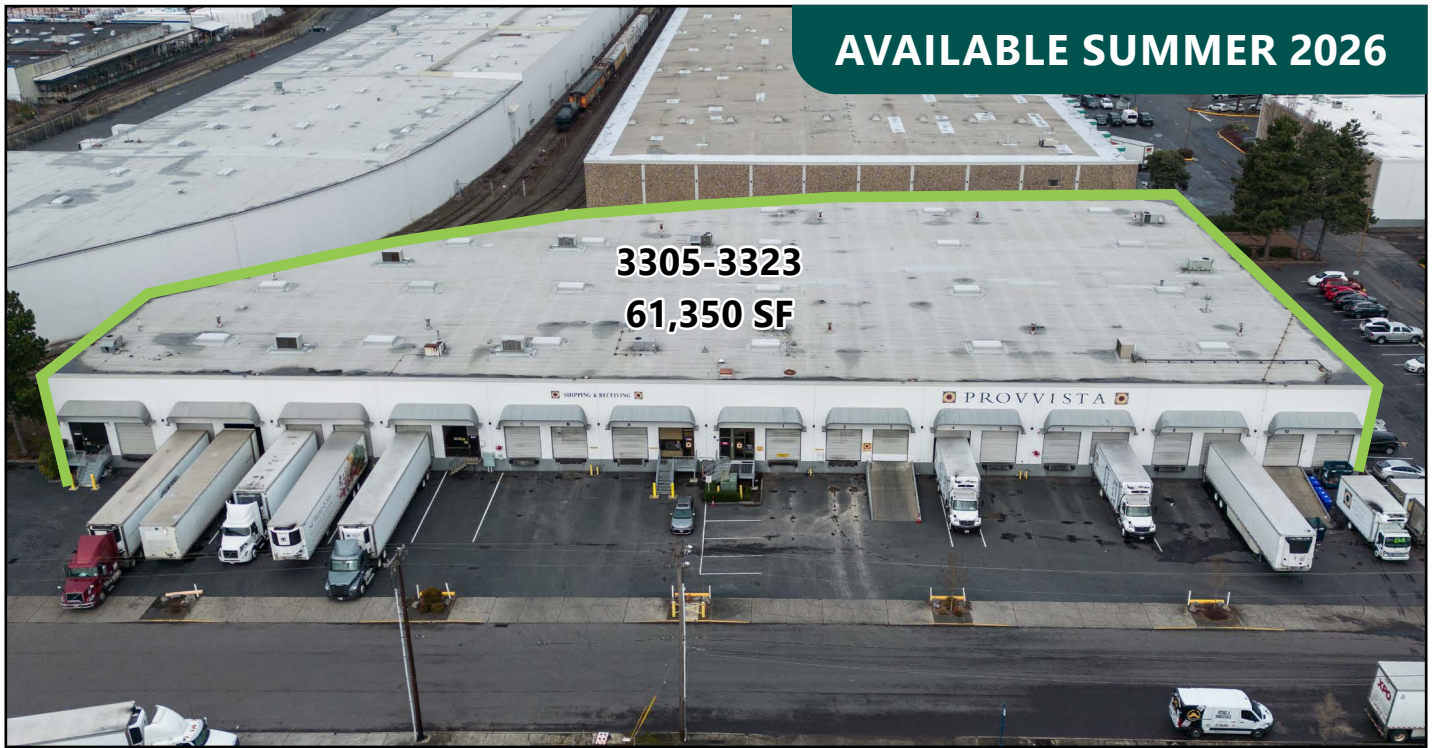


# 61,350 SF

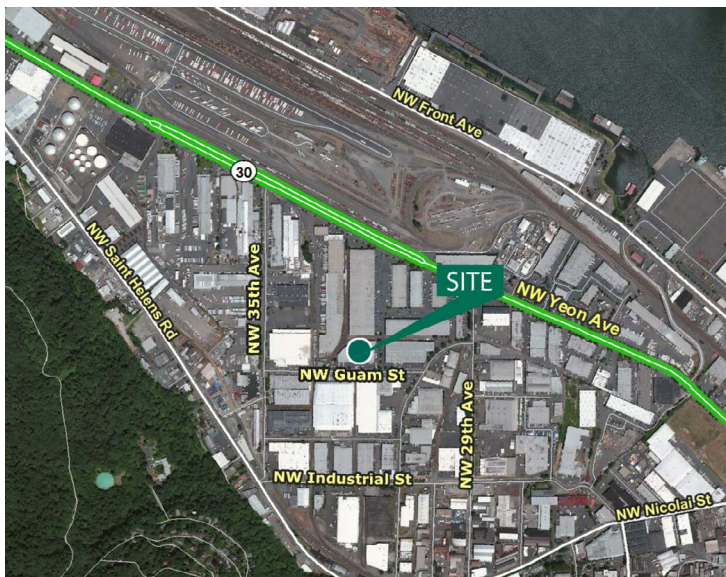


## Industrial Space For Lease with Freezer & Cooler Areas



## Prologis NW Corporate Park

3305-3323 NW Guam St  
Portland, OR 97210 USA



### LOCATION

- Guilds Lake / NW Industrial Area
- Ten (10) Buildings; 678,026 SF Park

### FACILITY

- Approximately 61,350 SF Available (Divisible)
- 8,173 SF of Office with  $\pm$ 50 Car Parking
- Twenty-one (21) Docks with Loading Equipment
- Two (2) Grade
- Fully Sprinklered
- 24' Clear Height
- Existing Freezer/Cooler Improvements

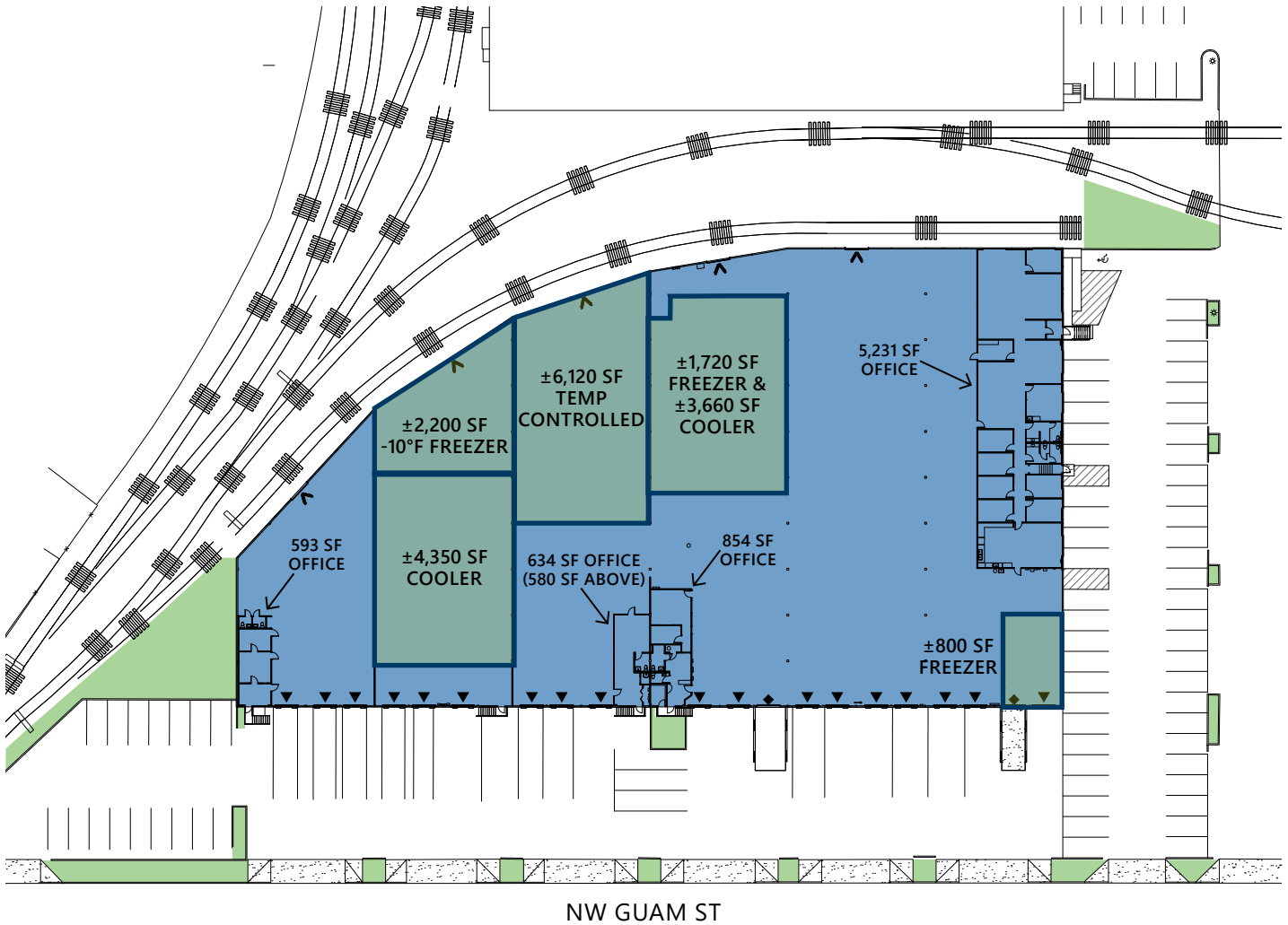
### ADVANTAGES AND AMENITIES

- Close-In NW Location
- Minutes to Downtown Portland
- Immediate Access to I-405 and I-5
- Park Amenities Include Food and Convenience Services
- Call for Rates

# 61,350 SF



## Industrial Space For Lease with Freezer & Cooler Areas



### Capacity Commercial Group

Scott Kappes, SIOR  
scottk@capacitycommercial.com  
ph +1 503.517.9877  
cell +1 503.816.4201  
805 SW Broadway Street, Suite 600  
Portland, OR 97205

### Capacity Commercial Group

Kenny Houser, SIOR  
kenny@capacitycommercial.com  
ph +1 503.517.9875  
cell +1 503.385.6080  
805 SW Broadway Street, Suite 600  
Portland, OR 97205

### Prologis

Kurt Nelson  
knelson@prologis.com  
ph +1 503.276.7361  
4380 SW Macadam Avenue  
Suite 440  
Portland, OR 97239