

4407 MEDICAL PKWY | \$ 995,000

LOCAL
COLOR
REALTY
GROUP



THE PROPERTY

- Mid-Century Gem in Vibrant Central Austin!
- Wonderful location near Seton Medical Center, Burnet Road corridor, 45th St., and Lamar

PROPERTY FEATURES

- YEAR BUILT/RENOVATED: 1955/2015
- 962 SQUARE FEET
- BUILDING FAR: 0.20
- LAND ACRES: 0.11 AC
- OFFICES & COMMON AREA
- 1 KITCHENETTE
- BACK PATIO
- ADA BATHROOM
- 8+ PARKING SPACES
- ALLEY ACCESS
- ROSEDALE COMMUNITY



PAOLA MCELHERON

Broker/Owner, GRI, CLHMS
512-740-0071 Direct
Local Color Realty Group
Paola@LocalColorGroup.com
www.LocalColorGroup.com



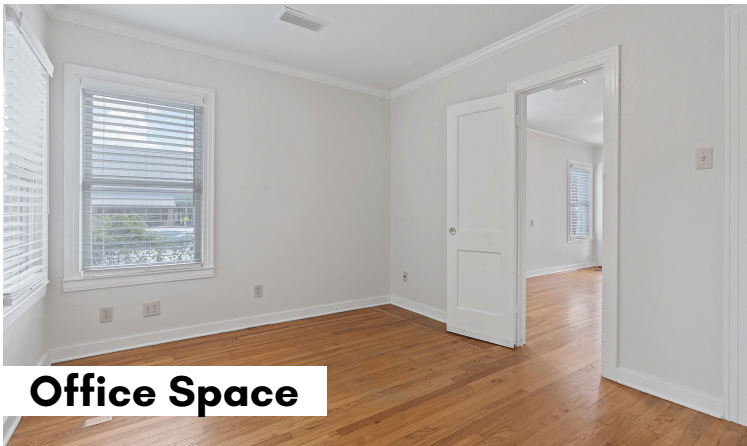
4407 MEDICAL PKWY | \$ 995,000

LOCAL
COLOR
REALTY
GROUP



Front Common Area

The versatile space is ideal for medical offices, professional businesses such as lawyers, accountants, and psychologists, as well as wellness centers, cafes, and boutiques.



Office Space



Front Porch



Kitchenette



Back Patio

4407MEDICALPKWY.COM

MLS ID: 9526801



PAOLA MCELHERON

Broker/Owner, GRI, CLHMS

512-740-0071 Direct

Local Color Realty Group

Paola@LocalColorGroup.com

www.LocalColorGroup.com



LOCAL
COLOR
REALTY
GROUP