



CONNECTOR | **PARK**
LOWELL, MA
41 WELLMAN STREET & 59 LOWES WAY



KS Partners owned & managed

 **SVN**
PARSONS COMMERCIAL
GROUP | BOSTON

Located in historic Lowell just 25 miles northwest of Boston, Connector Park offers 199,753 SF of Class A office space between two buildings: 41 Wellman Street and 59 Lowes Way. With direct access to the Lowell Connector, Route 3 and Interstate 495, the park is ideally positioned for easy commuting from Greater Boston as well as New Hampshire.

The park features on-site amenities such as a new fitness center, Wi-Fi lounge and bike storage. There are also numerous restaurants and retail destinations within a 10-minute drive. Connector Park offers all the urban amenities of the modern workplace in a convenient suburban setting.



NEARBY AMENITIES



1.4 miles



0.3 miles



1.4 miles



0.5 miles



0.3 miles



0.4 miles



0.5 miles



3 miles





Within Connector Park

WITHIN 10 MINUTES

16  SHOPPING & ENTERTAINMENT

 RESTAURANTS 25+

7  FITNESS CENTERS

8  BARS & BREWERIES

7+  COFFEE SHOPS



41 WELLMAN STREET

Total Building: 102,589 SF

Total Available: 68,754 SF

Parking: 505 spaces

Loading Dock: One

Year Built: 1983

Amenities: Fitness center, conference center and lounge



59 LOWES WAY

Total Building: 97,194 SF

Total Available: 25,746 SF

Parking: 505 spaces

Loading Dock: One

Year Built: 1983

Amenities: Fitness center and lounge

AMENITIES WITHIN CONNECTOR PARK



NEW CONFERENCE ROOM

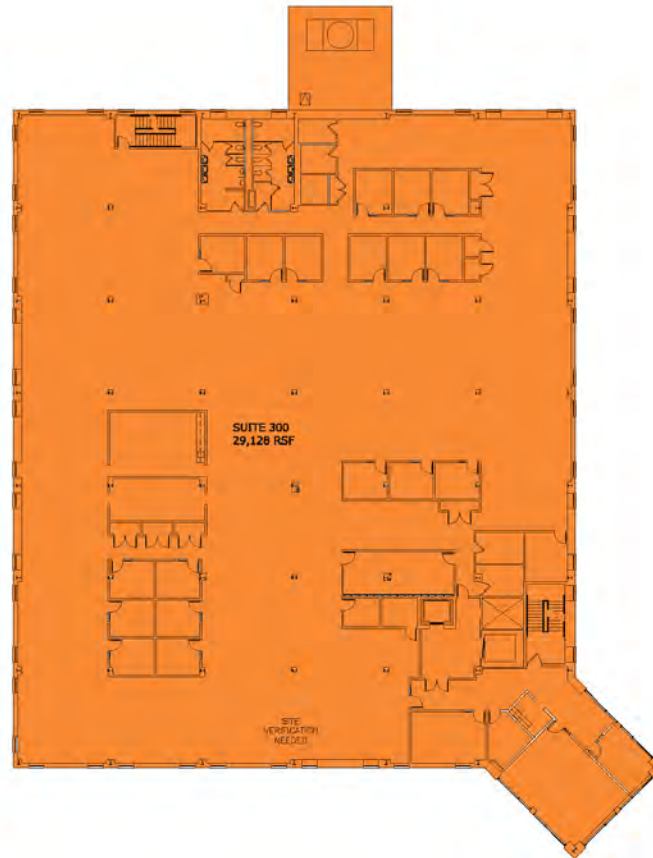


FITNESS CENTER

41 WELLMAN STREET FLOOR PLANS



FIRST FLOOR: 10,751

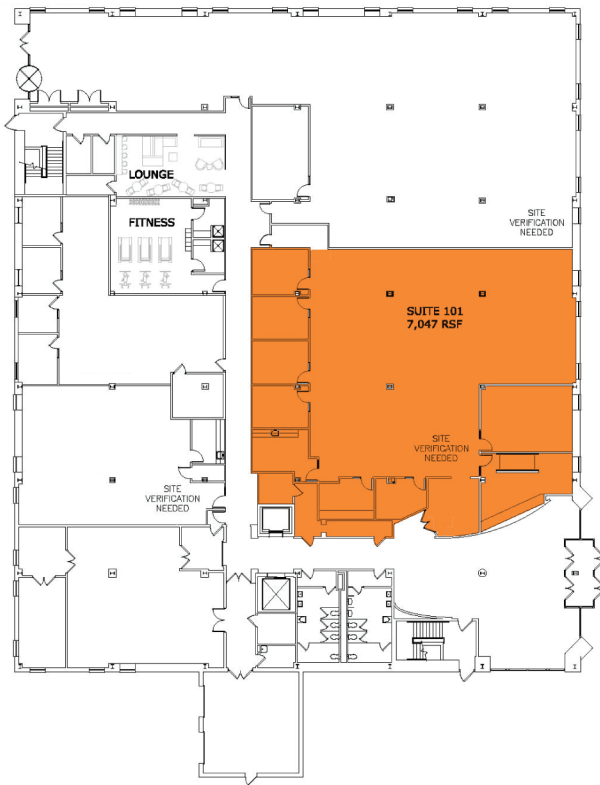


THIRD FLOOR: 29,128 SF



FOURTH FLOOR: 28,875 SF

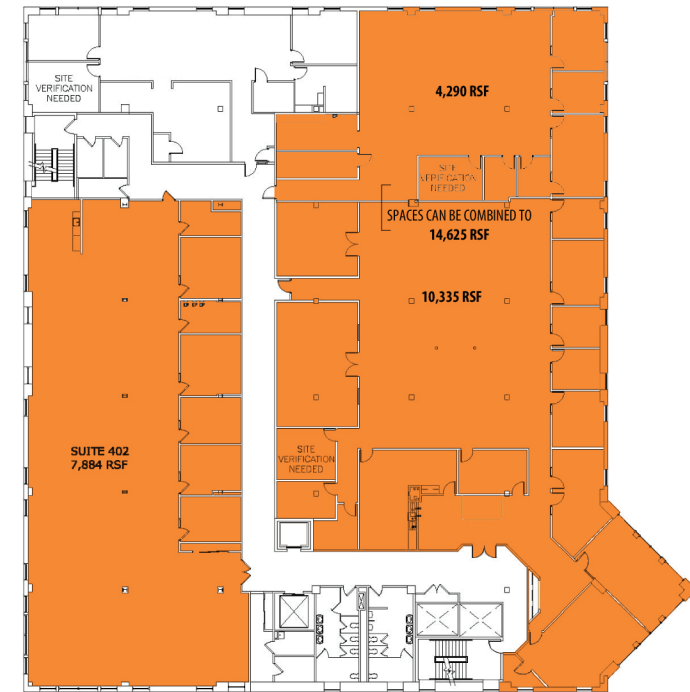
59 LOWES WAY FLOOR PLANS



FIRST FLOOR: 7,047 SF



SECOND FLOOR: 10,815 SF



FOURTH FLOOR: 18,219 SF



CONNECTOR | **PARK**
LOWELL, MA
41 WELLMAN STREET & 59 LOWES WAY



CONTACTS

MATT QUINLAN

Assistant Managing Director of Brokerage
508 271 9208
matthew.quinlan@svn.com

ALEX BERGER

Senior Advisor
508 271 9205
alex.berger@svn.com

JAMES NAWN

Associate Advisor
508 271 9210
james.nawn@svn.com

KS Partners owned & managed


PARSONS COMMERCIAL
GROUP | BOSTON