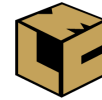


PROPERTY FOR SALE / LEASE

32730 Palmer Rd

Westland, MI 48186



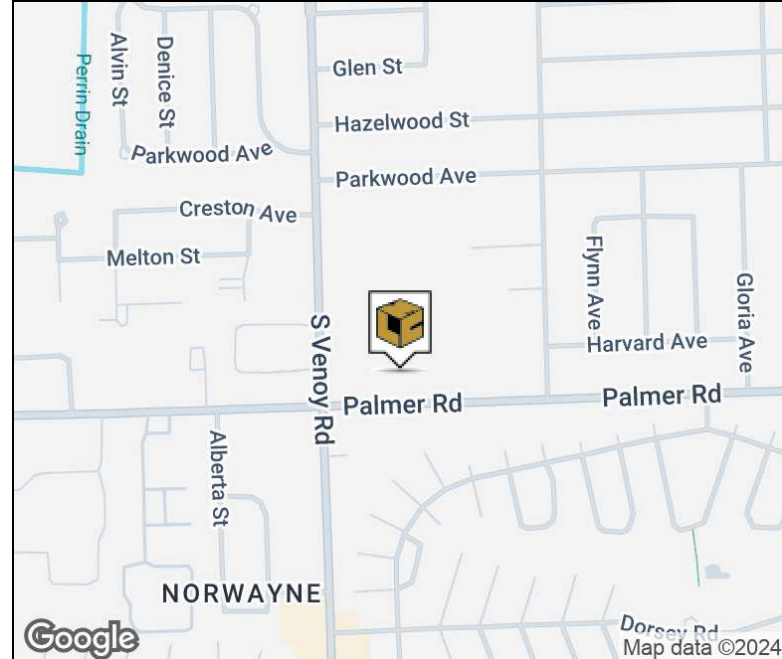
L. MASON CAPITANI
CORFAC INTERNATIONAL

PROPERTY SUMMARY



Property Highlights

- 0.66 Acre Lot
- Ideal Development Opportunity
- Excellent Frontage on Palmer Road
- Convenient Access to M-12 Highway
- Available For Many Different Uses
- Available For Lease - Built to Suit Opportunity



FOR MORE INFORMATION:

Robert Gojcaj

Sales Associate

248.637.7783

rgojcaj@LMCap.com



CONNECT WITH US

248.637.9700 | www.LMCap.com

Information contained herein was obtained from sources deemed to be reliable but is not guaranteed. Subjects to prior sales, changes of price or withdrawal.

PROPERTY FOR SALE / LEASE

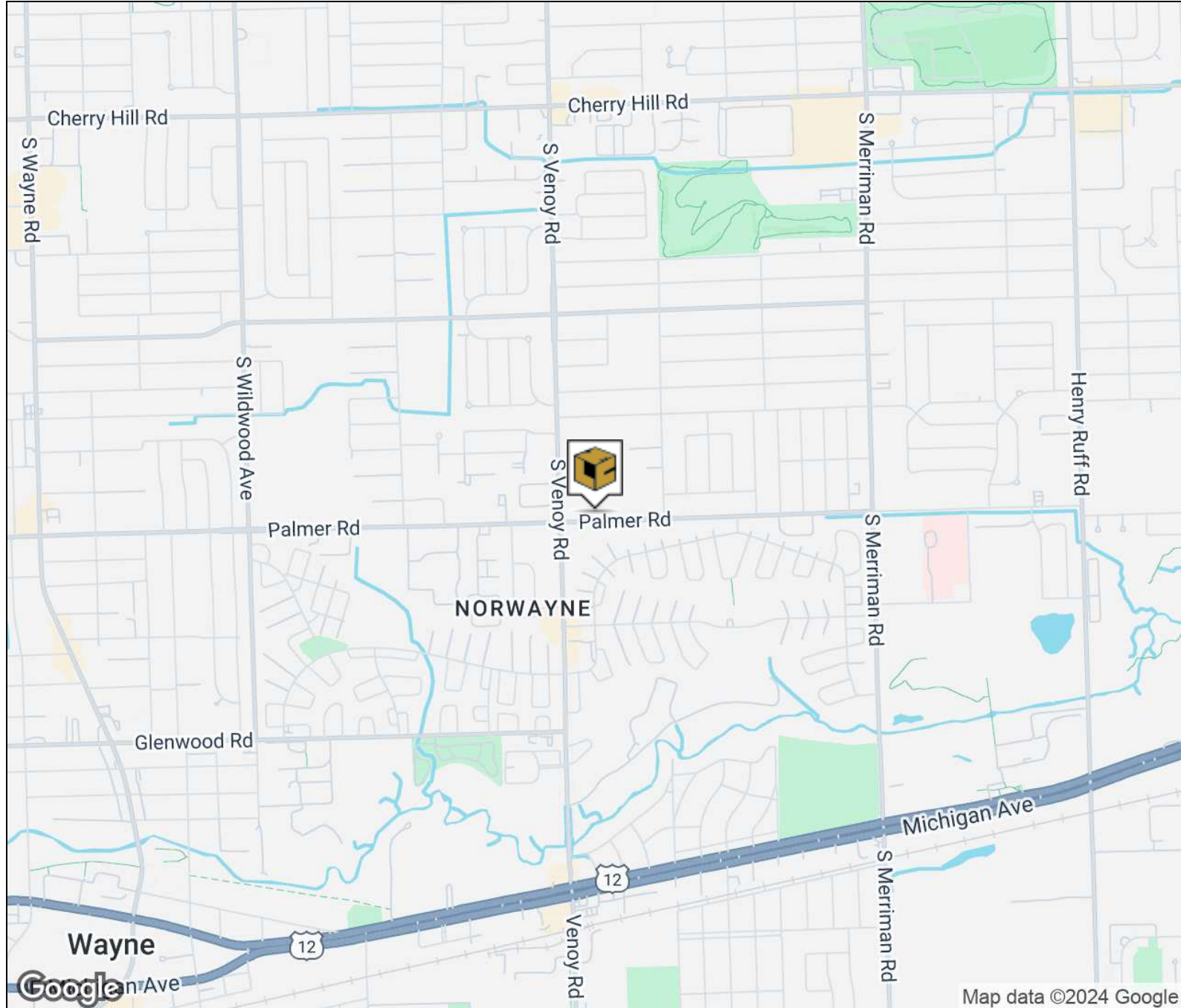
32730 Palmer Rd

Westland, MI 48186



L. MASON CAPITANI
CORFAC INTERNATIONAL

LOCATION MAP



FOR MORE INFORMATION:

Robert Gojcaj

Sales Associate

248.637.7783

rgojcaj@LMCap.com



CONNECT WITH US

248.637.9700 | www.LMCap.com

Information contained herein was obtained from sources deemed to be reliable but is not guaranteed. Subjects to prior sales, changes of price or withdrawal.

PROPERTY FOR SALE / LEASE

32730 Palmer Rd
Westland, MI 48186



L. MASON CAPITANI
CORFAC INTERNATIONAL

PROPERTY DETAILS

Property Information

Property Type	Land
Zoning	OB- Office Business
Property Subtype	Office
Lot Size	0.66 Acres
Lot Frontage	207 ft
Lot Depth	138 ft
Price Per Acre	\$250,000

Storage / Rail / Additional Information

Outside Storage	-
Rail Siding	-
Front Yard Setback	25 ft
Side Yard Setback	10 ft
Rear Setback	30 ft

Sale Price	\$165,000
Price Per SF	\$5.74

Lease Rate	Withheld
------------	-----------------

Location Information

Street Address	32730 Palmer Rd
City, State, Zip	Westland, MI 48186
County	Wayne
Cross-Streets	S Venoy Road/Palmer Road
Side of Street	North
Nearest Highway	M-12, I-275

Utilities

Water	Yes
Water Description	-
Sewer	Yes - at Venoy Road
Gas	Yes
Electric	Yes

FOR MORE INFORMATION:

Robert Gojcaj

Sales Associate

248.637.7783

rgojcaj@LMCap.com



CONNECT WITH US

248.637.9700 | www.LMCap.com

Information contained herein was obtained from sources deemed to be reliable but is not guaranteed. Subjects to prior sales, changes of price or withdrawal.

PROPERTY FOR SALE / LEASE

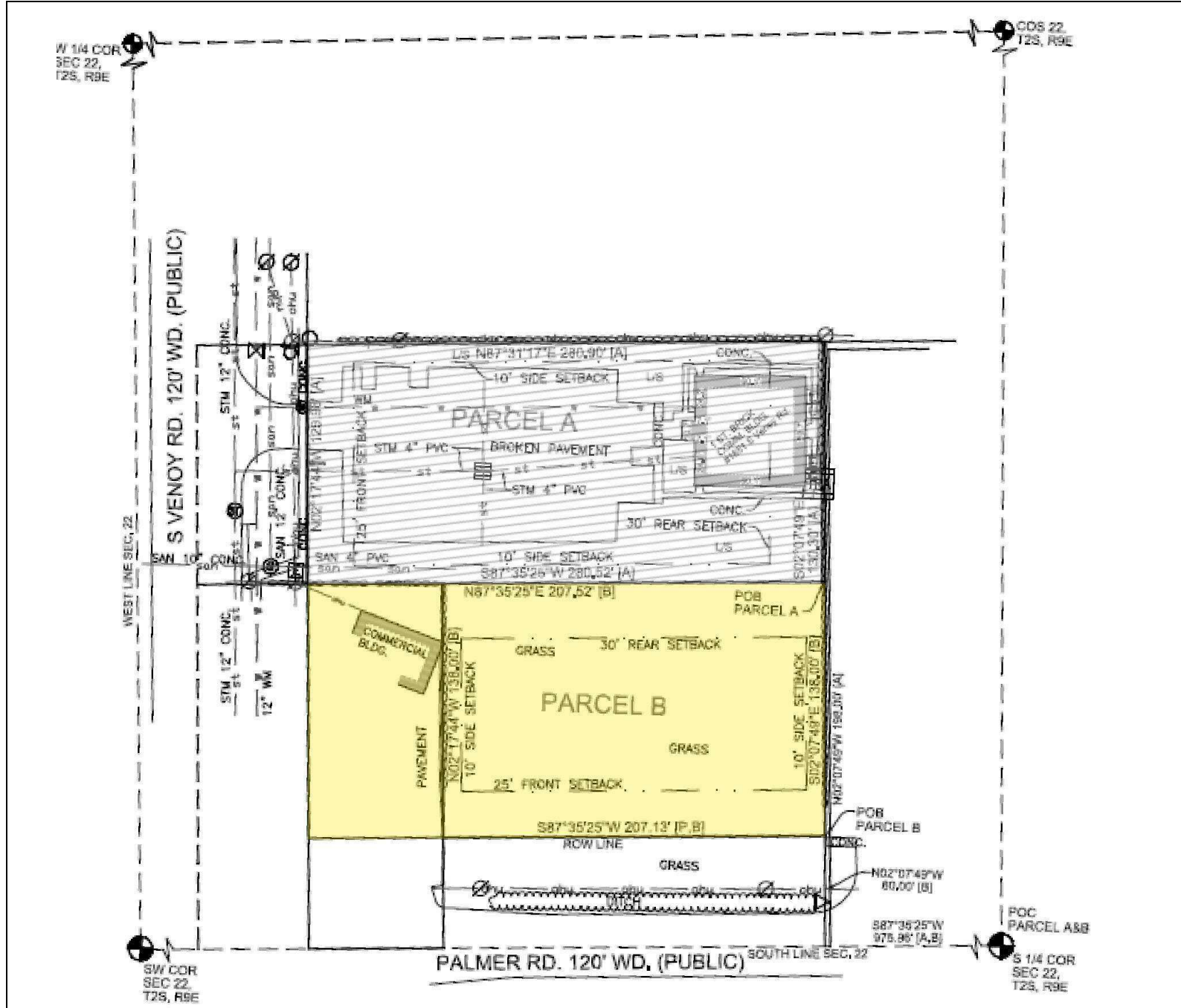
32730 Palmer Rd

Westland, MI 48186



L. MASON CAPITANI
CORFAC INTERNATIONAL

SURVEY



FOR MORE INFORMATION:

Robert Gojcay

Sales Associate

248.637.7783

rgojcay@LMCap.com



CONNECT WITH US

248.637.9700 | www.LMCap.com

Information contained herein was obtained from sources deemed to be reliable but is not guaranteed. Subjects to prior sales, changes of price or withdrawal.