



IMMEUBLE INDUSTRIEL  
À VENDRE

471 av gilles-villeneuve  
Berthierville

3 999 000 \$

Opportunité d'investissement exceptionnelle en plein cœur de Berthierville !

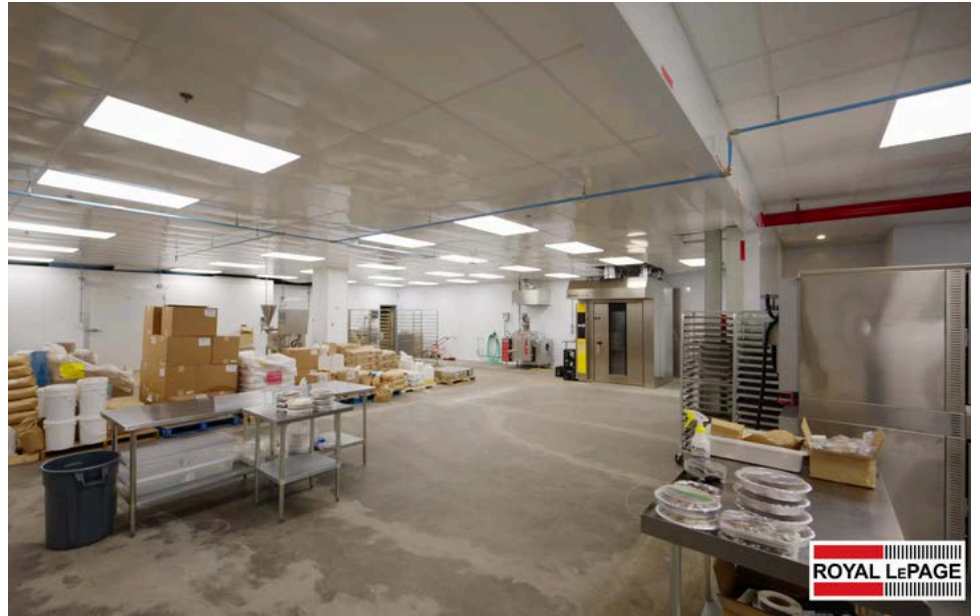
**Sylvain Dupré**

Courtier immobilier commercial - industriel

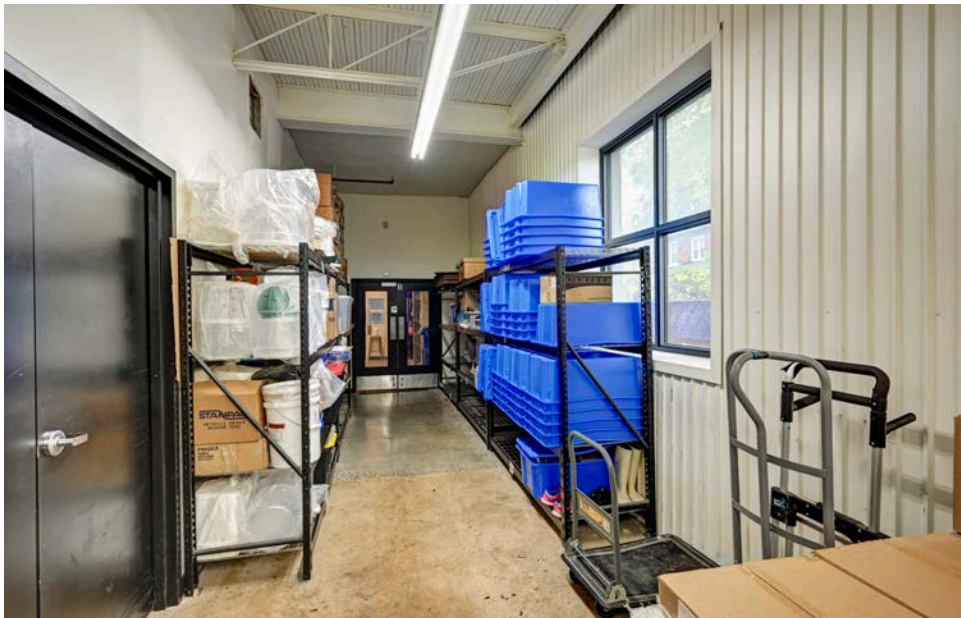
514.910.9376 | [vendu@sylvaindupre.com](mailto:vendu@sylvaindupre.com) | [sylvaindupre.com](http://sylvaindupre.com)

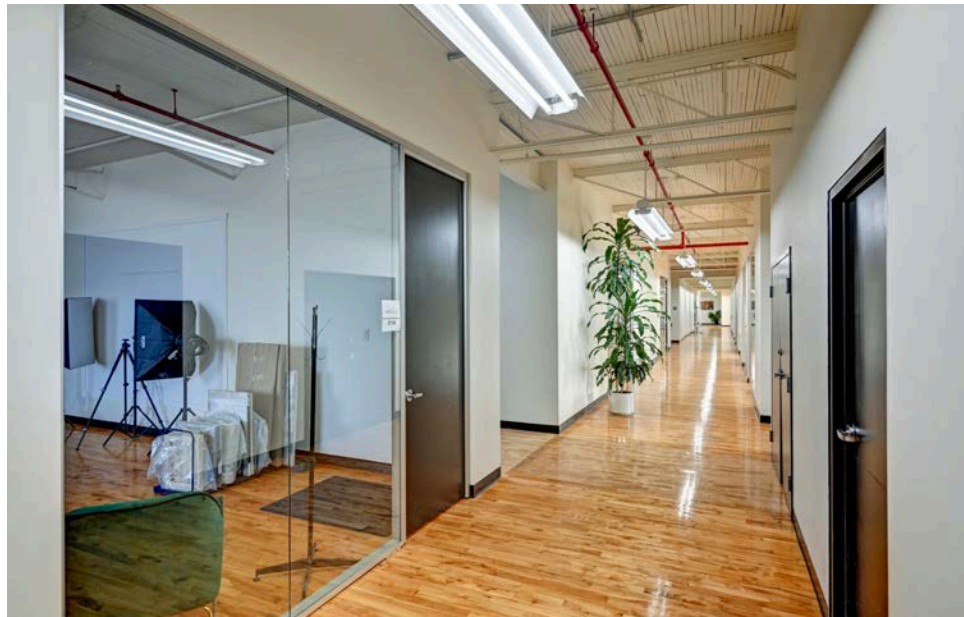
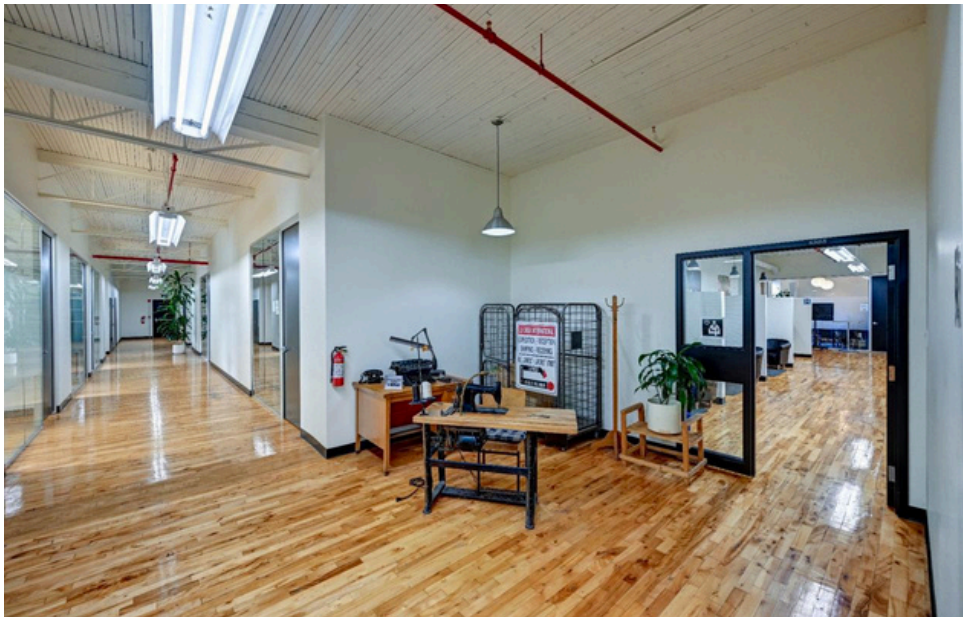
 ROYAL LEPAGE<sup>MD</sup>  
**COMMERCIAL**<sup>MC</sup>

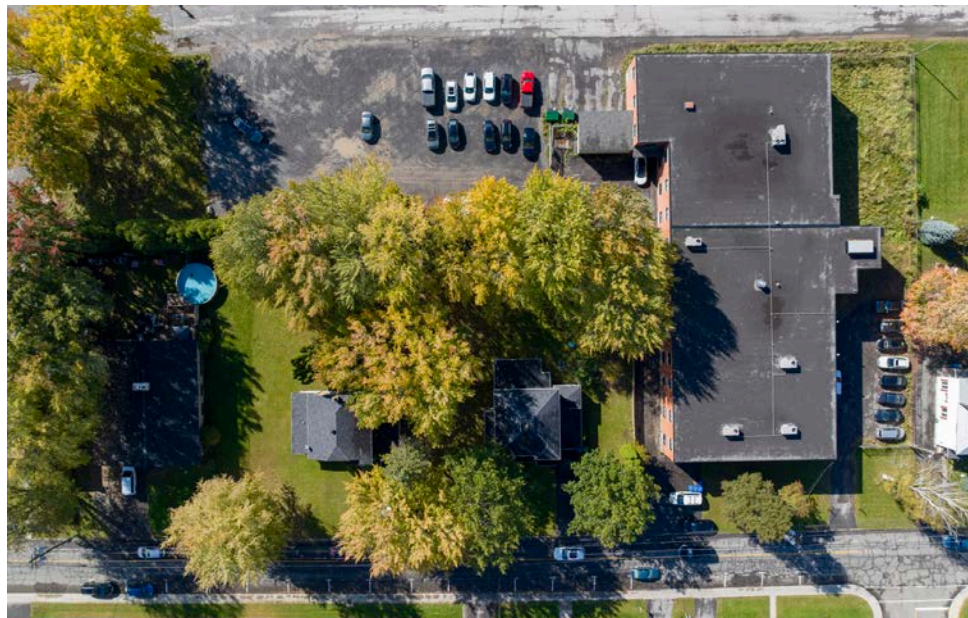
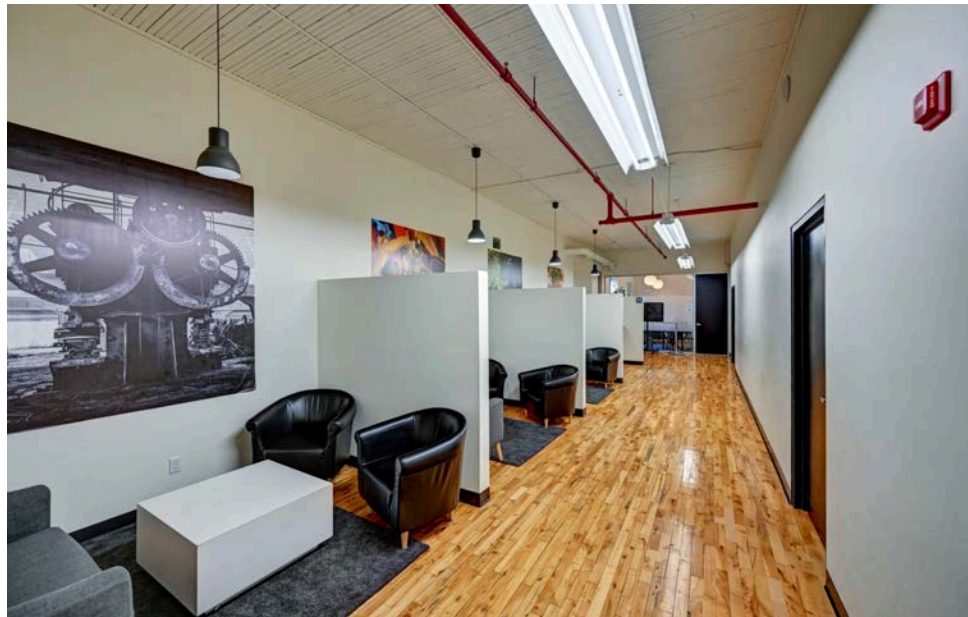








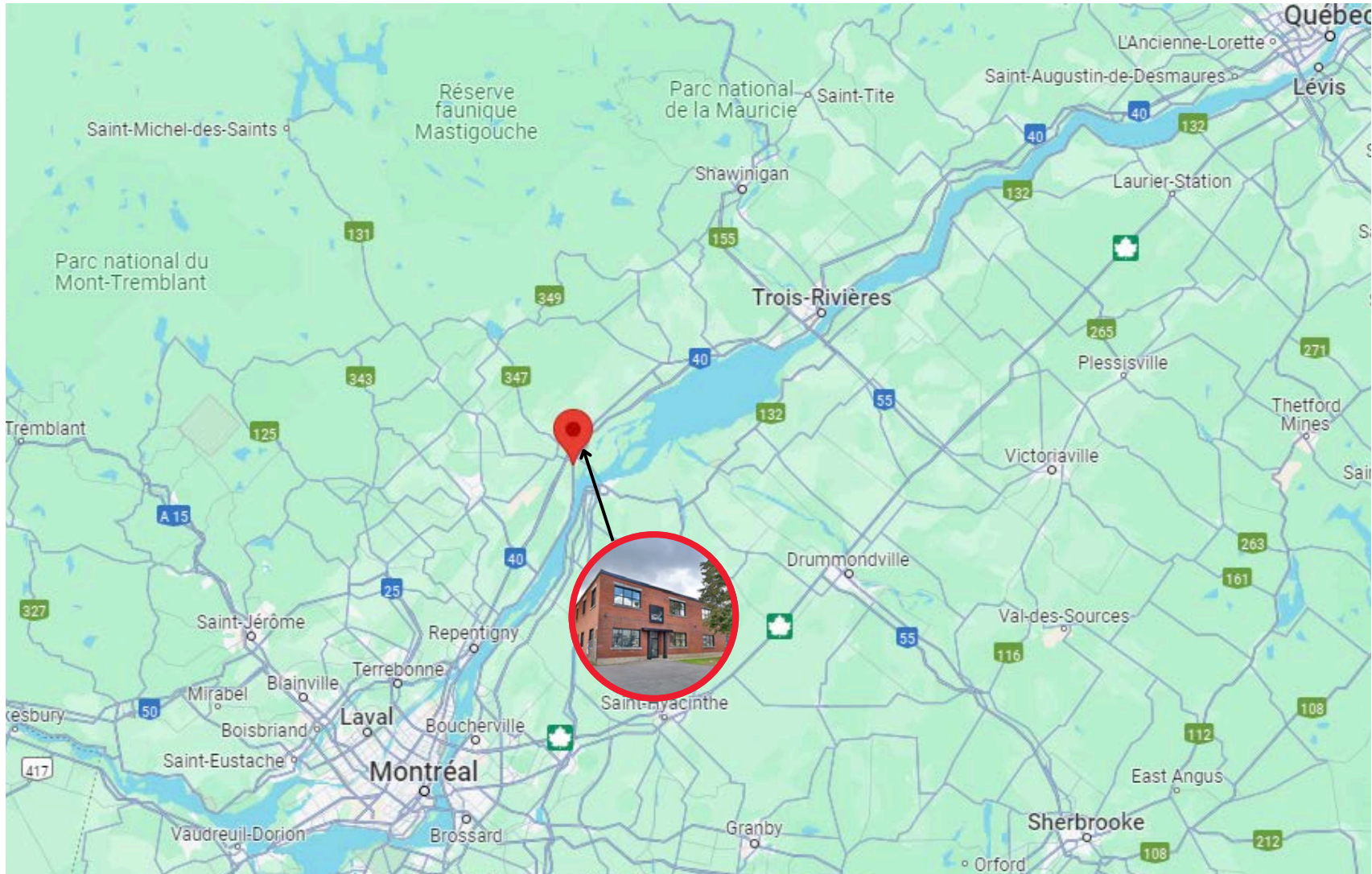






# LES ALENTOURS

471 AVE. GILLES-VILLENEUVE, BERTHIERVILLE



SITUÉ SUR L'ARTÈRE PRINCIPALE ENTRE QUÉBEC ET MONTRÉAL



TOUT PRÈS DE L'AUTOROUTE 40



**SYLVAIN DUPRÉ**

**COURTIER IMMOBILIER  
COMMERCIAL | INDUSTRIEL**

**514 910-9376**

**[vendu@sylvaindupre.com](mailto:vendu@sylvaindupre.com)**





**ROYAL LePAGE**