

FOR LEASE

PRIME OFFICE SPACE

KEYSTONE PLAZA
100 Market Street
Harrisburg, PA



BUILDING FEATURES

- On-site parking available
- Ideal location on the corner of Front and Market Streets
- On-site professional maintenance staff
- Class A space located on the first, third and fourth floors.

AVAILABLE SPACE

- 2,215 - 28,216 contiguous rentable square footage
- Up to 37,228 total rentable square footage
- Available June 2018



CONTACT PMI

Property Management, Inc.
Breanna Vogelsong

1300 Market Street, Suite 201
(717) 730-4141 ext 165

Lemoyne, PA 17043
Fax (717) 730 -4140

www.RENTPMI.com

(717) 730-4141

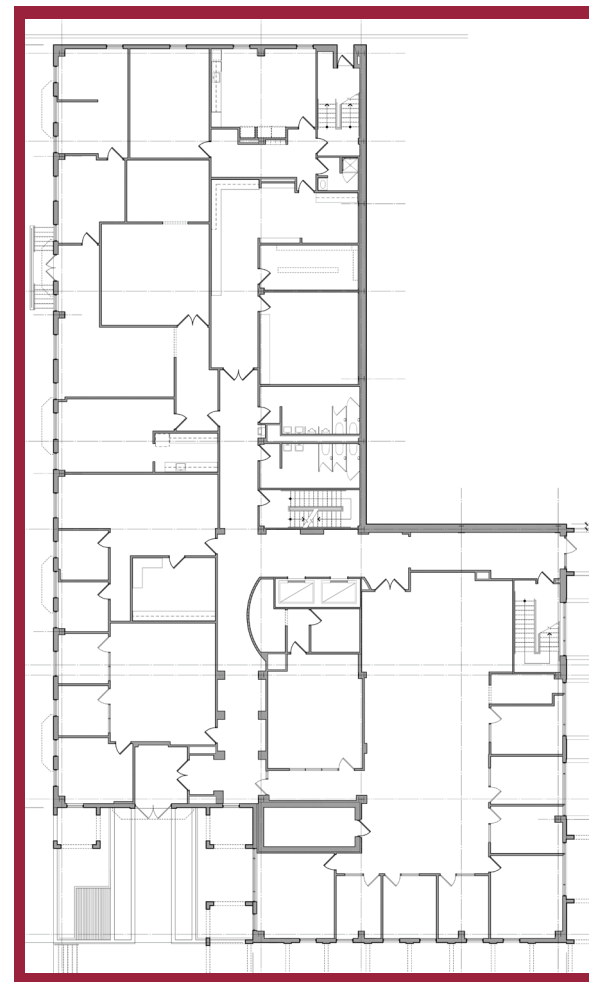
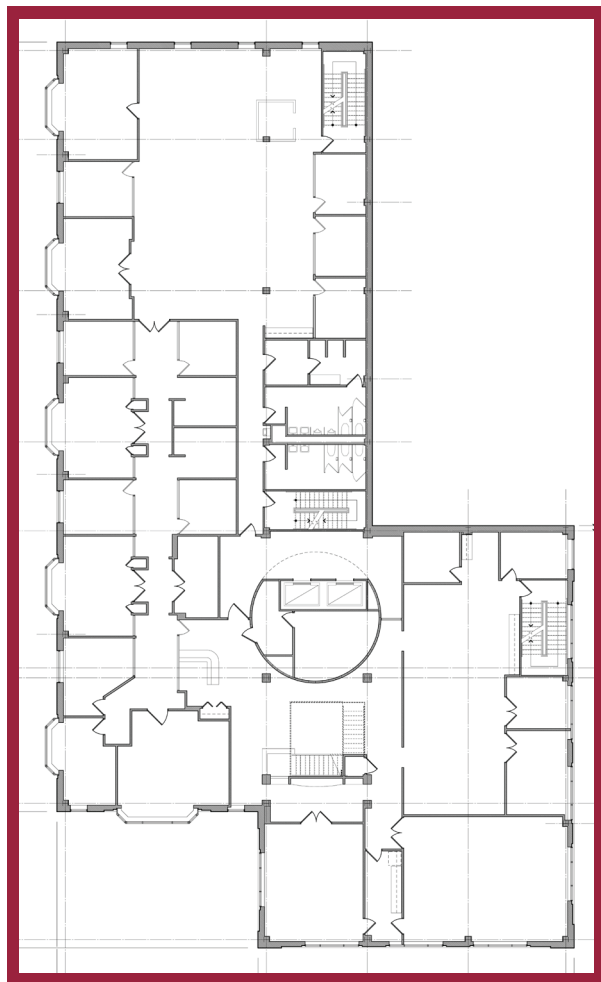
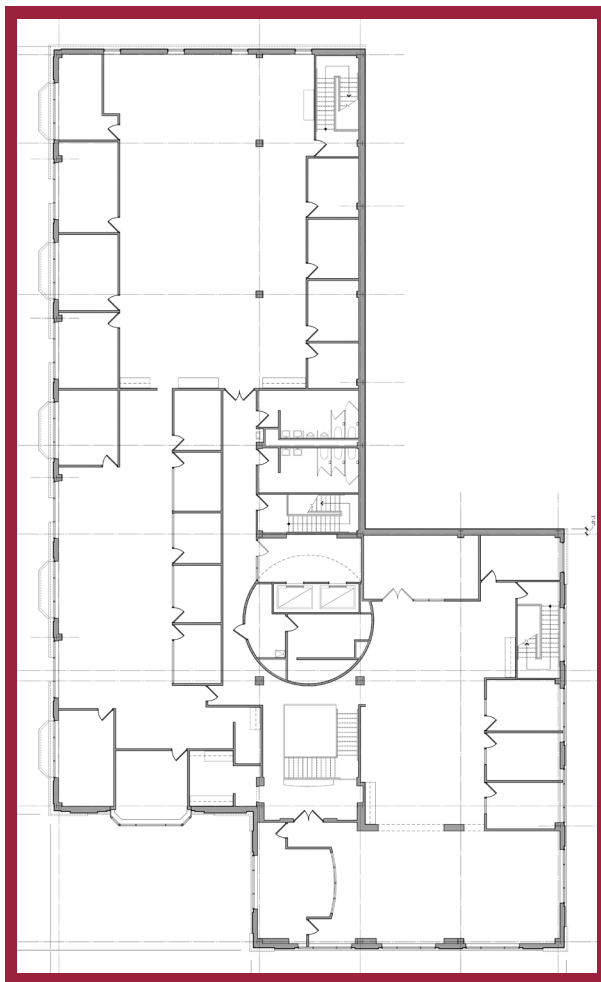
FOR LEASE
PRIME OFFICE SPACE



FOURTH FLOOR

THIRD FLOOR

GROUND FLOOR



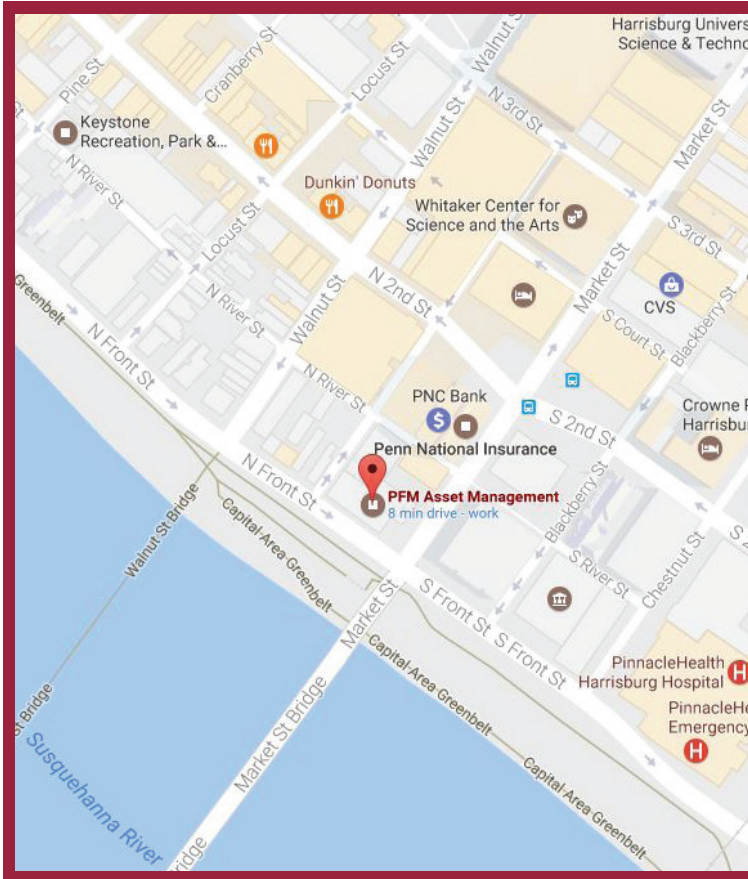
WWW.RENTPMI.COM

KEYSTONE PLAZA
100 Market Street
HARRISBURG, PA

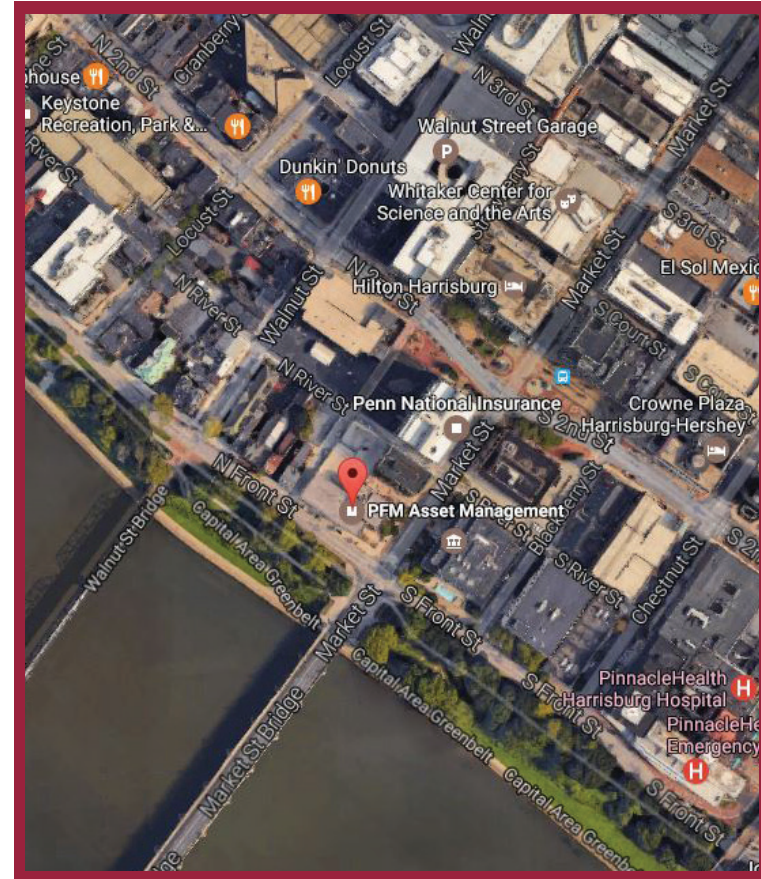
FOR LEASE PRIME OFFICE SPACE



LOCATION MAP



AERIAL MAP



Property Management, Inc. is a full-service real estate management company licensed in the Pennsylvania and subject to the laws therein. Under the principles of the law of agency in providing such services, Property Management, Inc. acts as an agent for and represents the best interests of the Property Owner/Lessor. The information contained herein is presented as information only and is subject to change, without notice, and neither Property Management, Inc. nor the Property Owner/Lessor accepts responsibility for errors, omissions, or misconstrued information.

WWW.RENTPMI.COM

KEYSTONE PLAZA
100 Market Street
HARRISBURG, PA