

**FOR LEASE**

Owned and Operated by 

# 2125 South 11th Avenue

Phoenix, AZ 85007

2125 S. 11th Avenue - Suite 120: ±26,100 SF

**FREEWAY ACCESS**



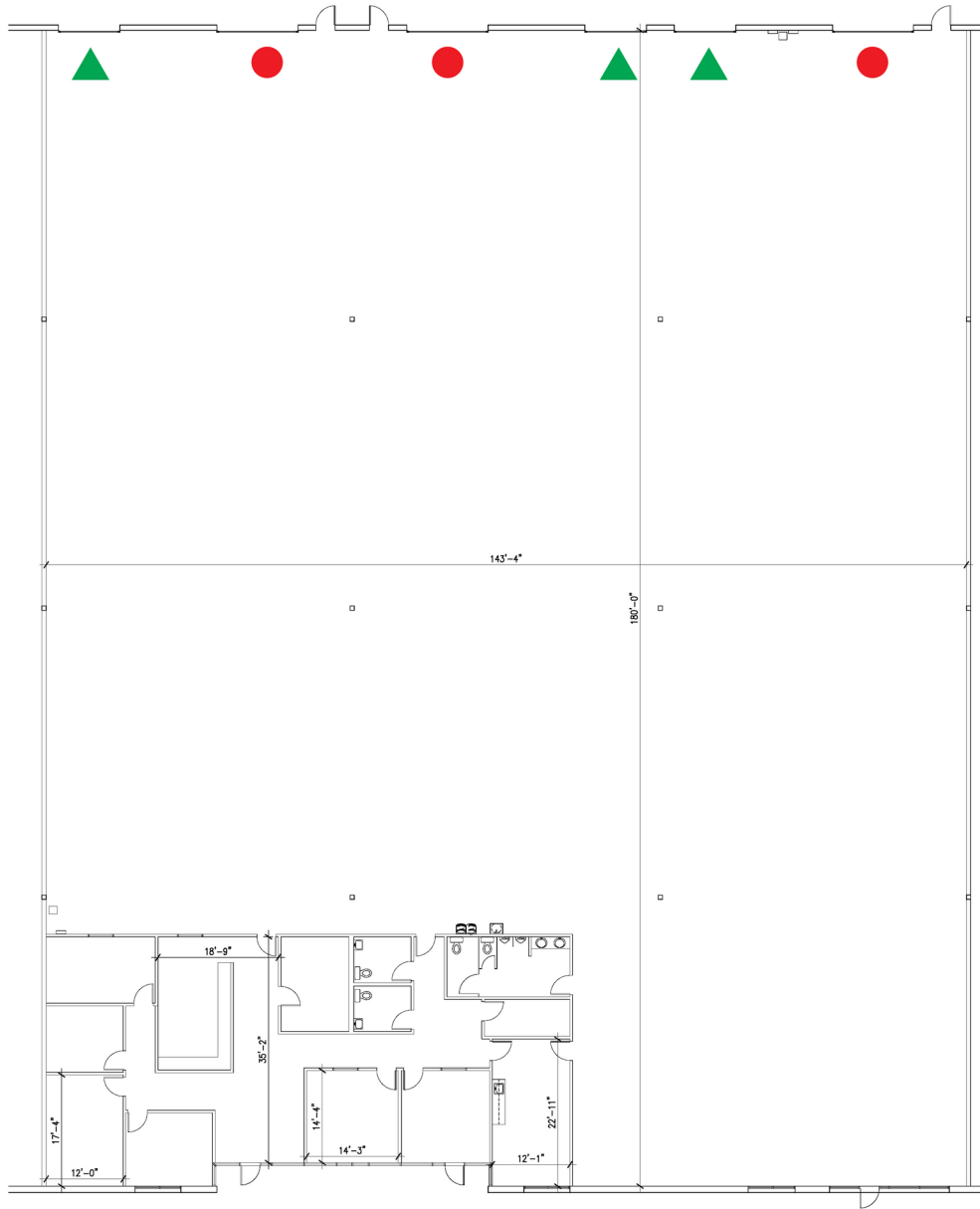
**LEASING INFO  
& CONTACT**



**Jeff Conrad, SIOR**  
**Allen Lowe, SIOR**  
**Ryan Hingst**

(602) 954-3743 / [jconrad@leearizona.com](mailto:jconrad@leearizona.com)  
(602) 954-3747 / [alowe@leearizona.com](mailto:alowe@leearizona.com)  
(602) 954-3772 / [rhingst@leearizona.com](mailto:rhingst@leearizona.com)

 **LEE &  
ASSOCIATES**  
COMMERCIAL REAL ESTATE SERVICES

This is not an offer or acceptance of an offer to lease space. A lease will only be offered or made in a written agreement signed by landlord. No representation or warranty of any kind is made by landlord unless set forth in a written definitive lease executed by the landlord.



 Truckwell  
 Grade Level

## 2125 S. 11th Avenue - Suite 120

Suite 120 ±26,100 SF

EVAP Cooled

3 Truckwells

±3,058 SF of Office

3 Grade Level Doors



### PROPERTY FEATURES

Adjacent to Full Diamond Interchange at Interstate 17 and 7th Avenue

Three Miles to Phoenix Sky Harbor International Airport

Grade Level Loading and Truckwells

A-2 Heavy Industrial Zoning, City of Phoenix

4 Building Project Totaling 336,665 SF

ESFR Sprinklers