

RIVERTON MEDICAL CAMPUS

*1,264 - 18,369 SF medical
suites available for lease
in South King County*

13030-13050 MILITARY RD S
TUKWILA, WA 98168

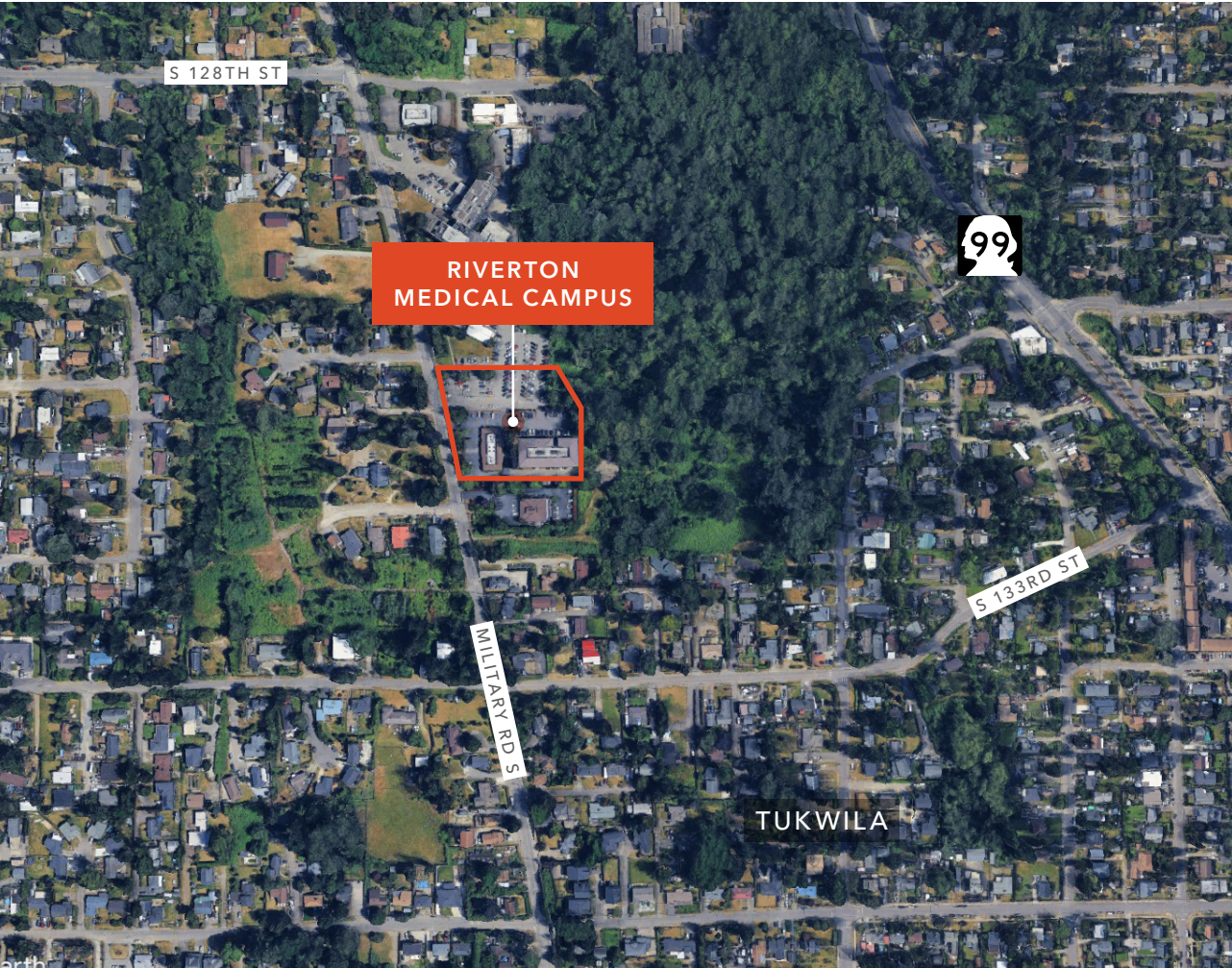
DAN MATHEWS
206.248.7308
dan.mathews@kidder.com

TODD BATTISON
206.296.9621
todd.battison@kidder.com

KIDDER.COM



RIVERTON MEDICAL CAMPUS IS A 2 BUILDING MEDICAL OFFICE CAMPUS



BUILDING INFORMATION

Centrally located medical space offering cost-effective, near-term occupancy

Adjacent to Olympic Heritage Behavioral Health

Ample, free parking

Synergistic mix of medical clinics for referrals

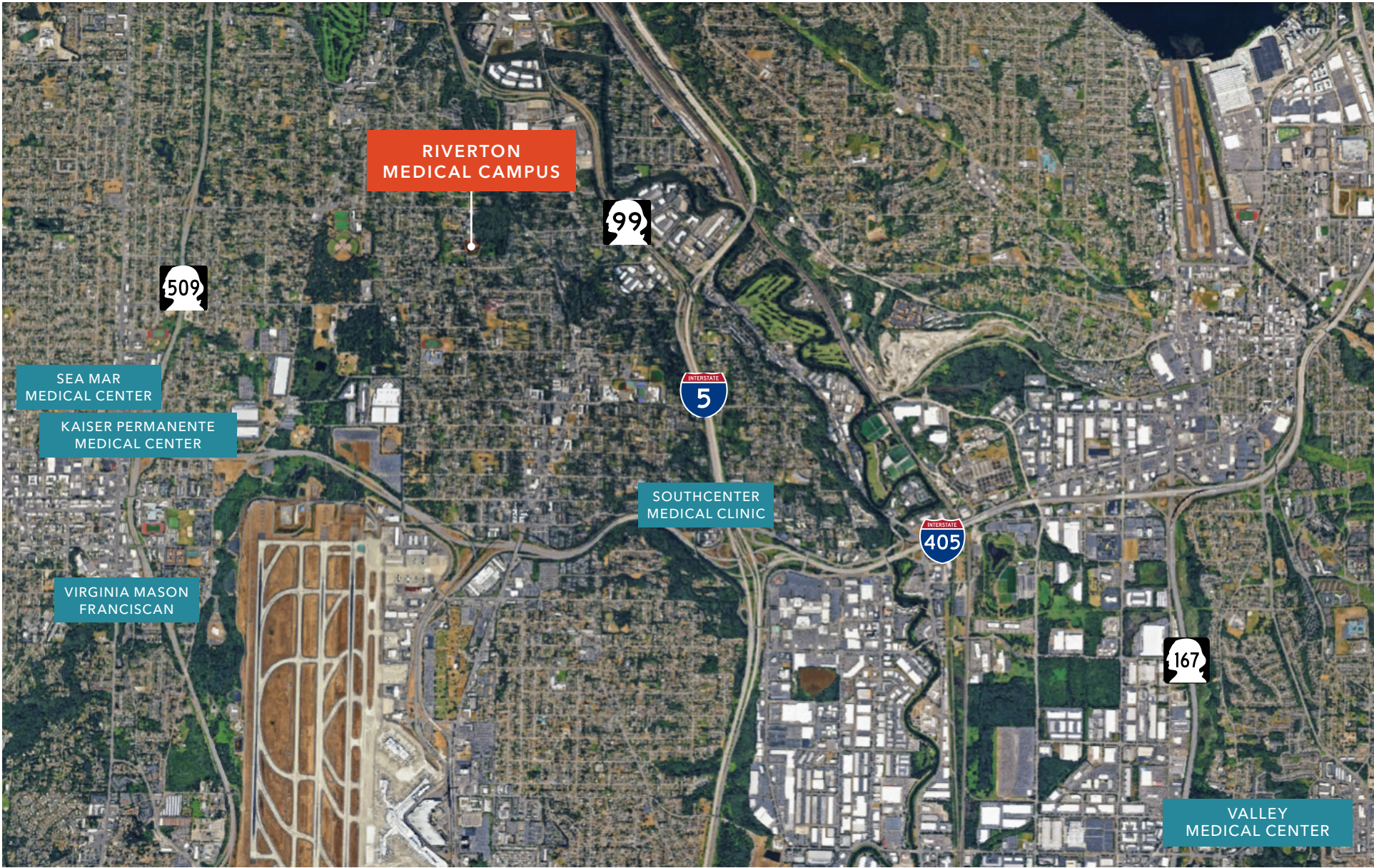
Easy to find and close to I-5, SR-509, and I-405

No hospital mandated, onerous imaging, surgery, or other clinic use restrictions

JOIN CURRENT CAMPUS TENANTS



RIVERTON MEDICAL CAMPUS



13030 MILITARY ROAD SOUTH



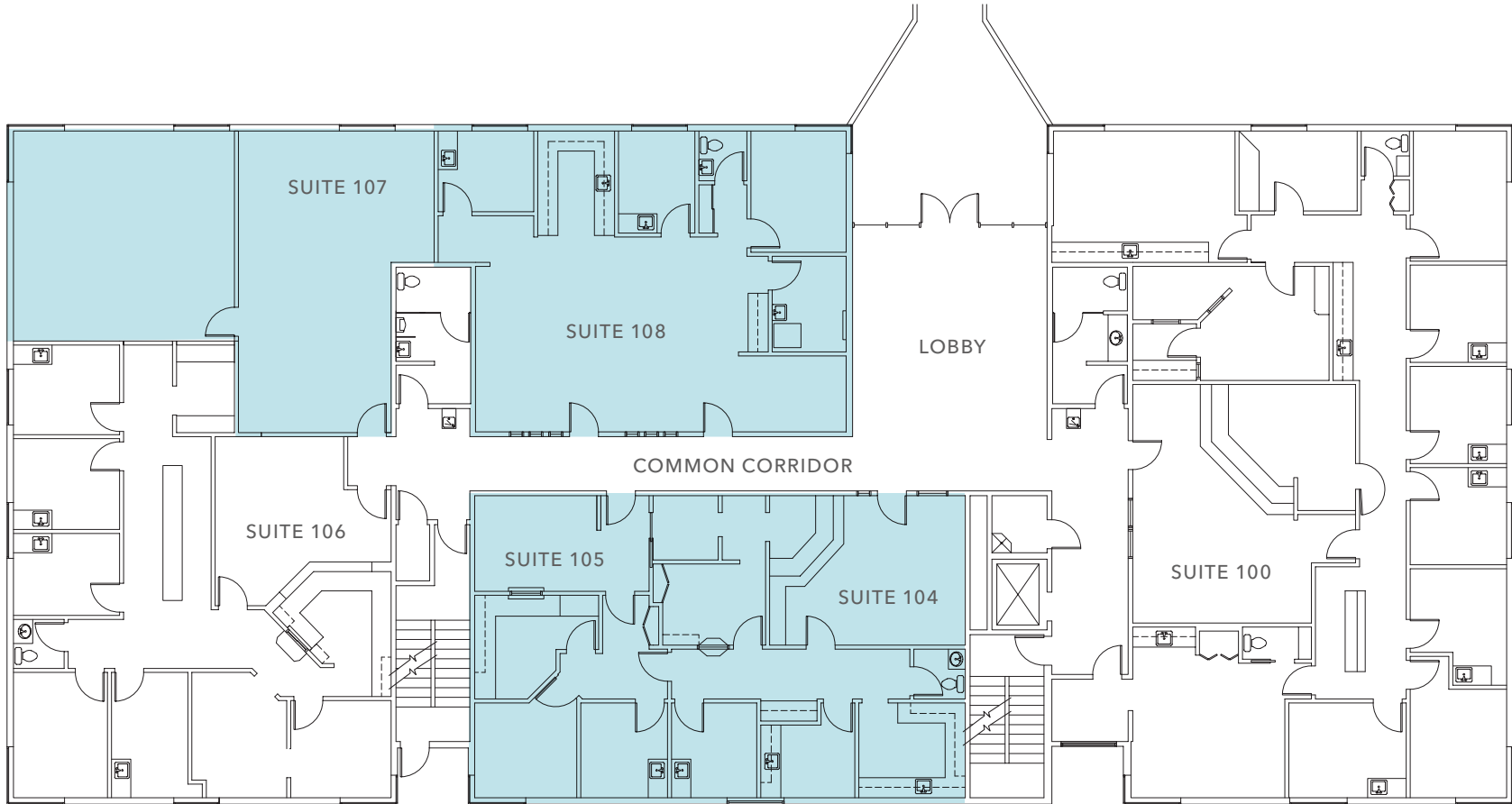
FLOOR PLAN

13030 MILITARY ROAD SOUTH

3,343 SF
APPROX. AVAILABLE

CONTACT
BROKER FOR LEASE RATE

2026
AVAILABLE



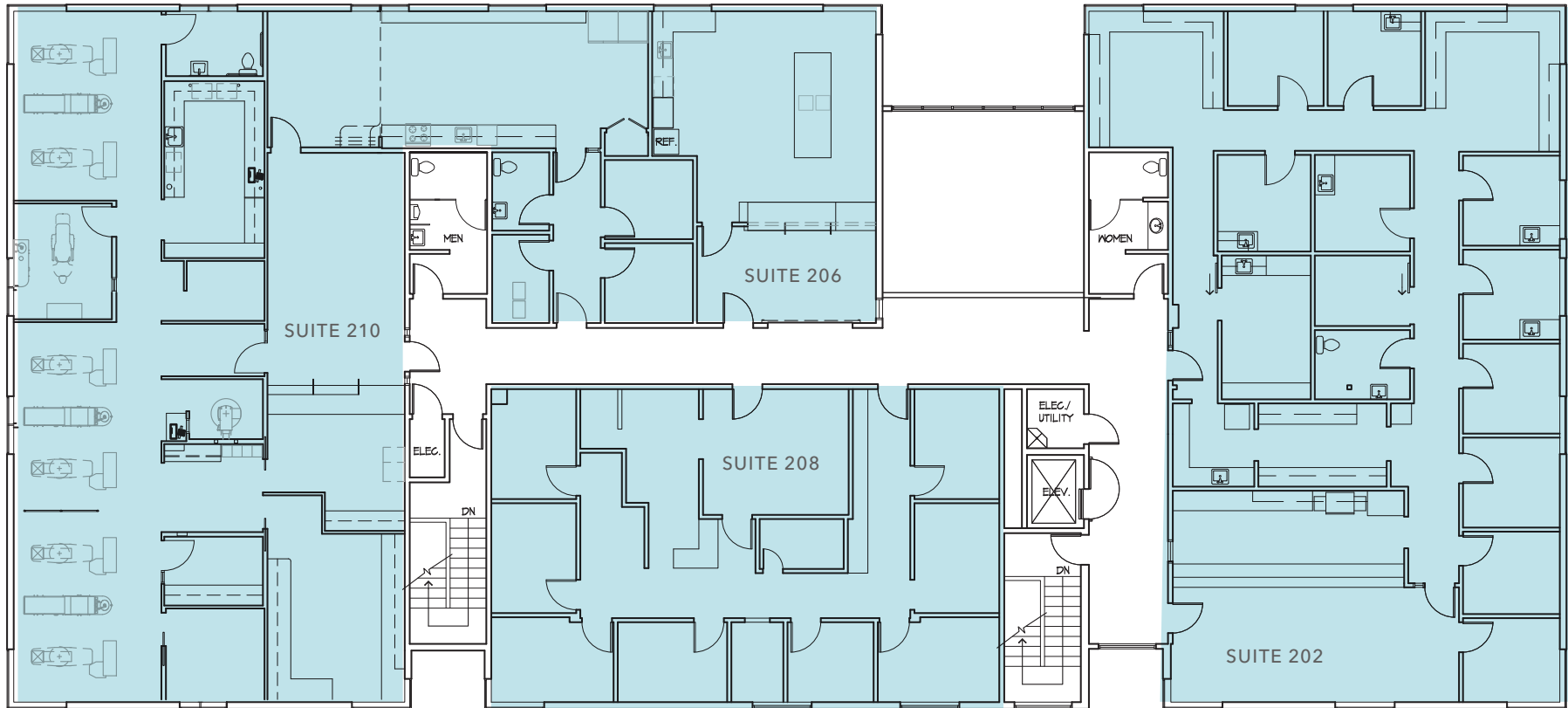
FLOOR PLAN

13030 MILITARY ROAD SOUTH

10,152 SF
APPROX. AVAILABLE

CONTACT
BROKER FOR LEASE RATE

2026
AVAILABLE



13050 MILITARY ROAD SOUTH



Photo includes conceptual renderings of future potential improvements for illustrative purposes and may not represent the actual condition of property.

FLOOR PLAN

13050 MILITARY ROAD SOUTH

5,274 SF

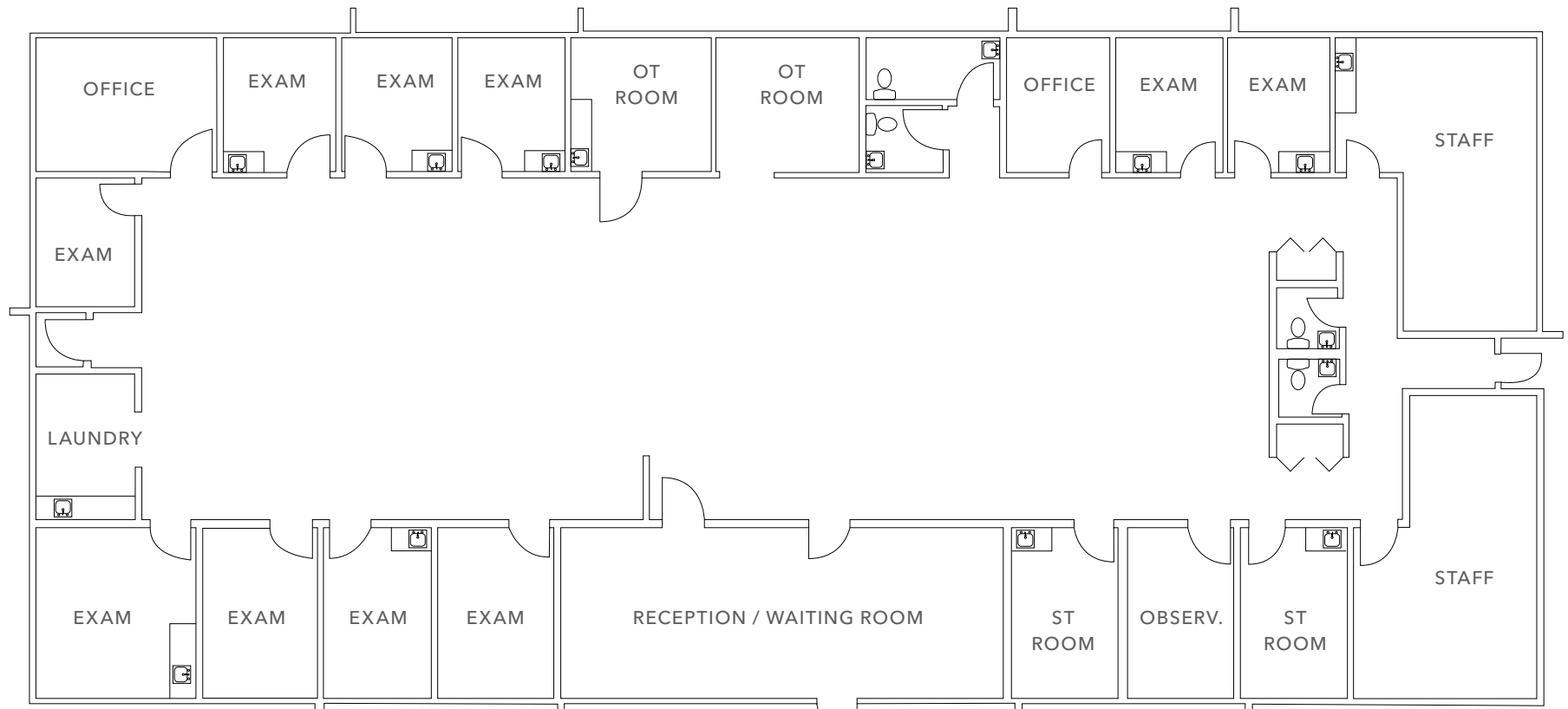
APPROX. AVAILABLE

CONTACT

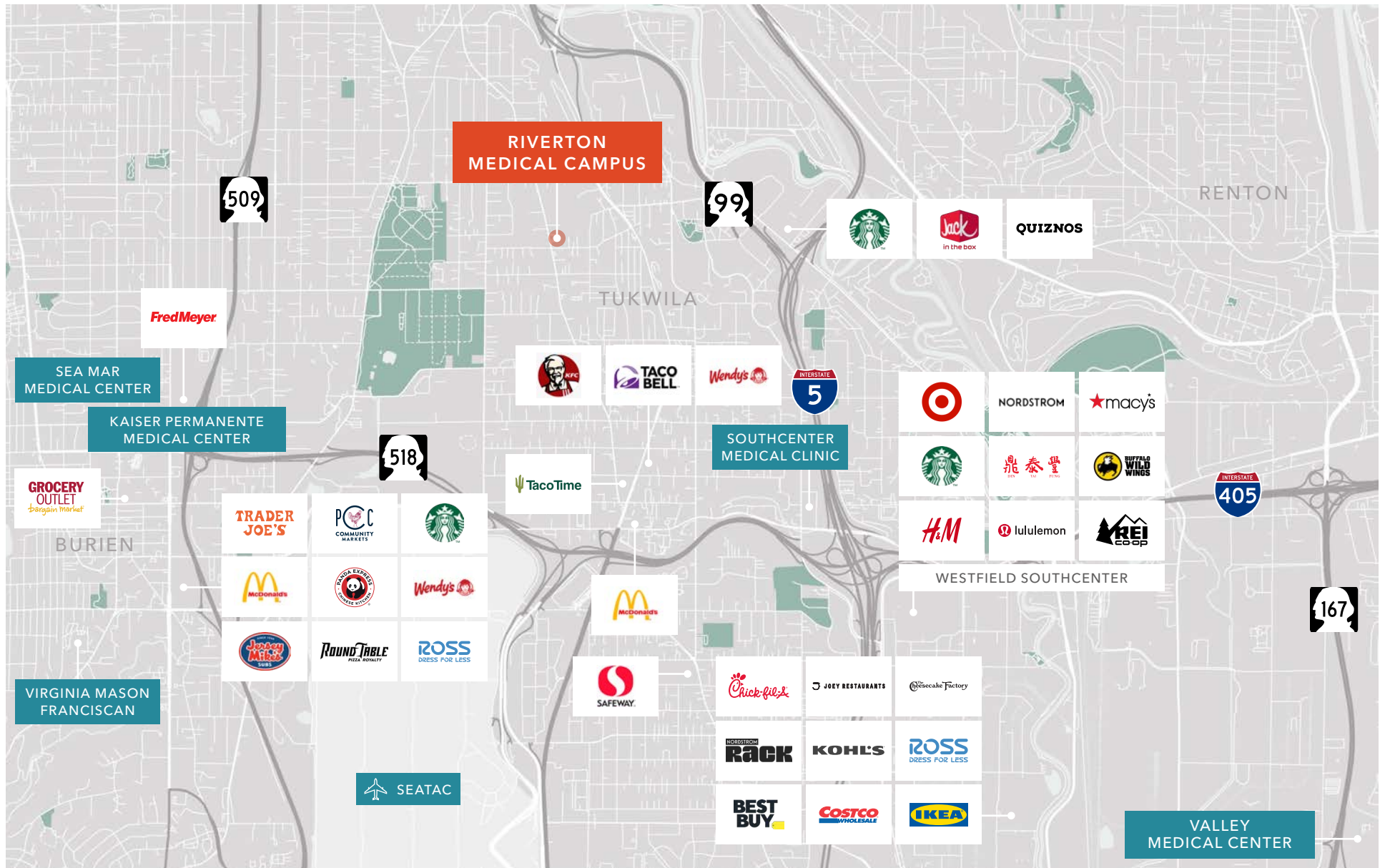
BROKER FOR LEASE RATE

2026

AVAILABLE



RIVERTON MEDICAL CAMPUS



RIVERTON MEDICAL CAMPUS

Exclusively leased by

DAN MATHEWS
206.248.7308
dan.mathews@kidder.com

TODD BATTISON
206.296.9621
todd.battison@kidder.com

KIDDER.COM

This information supplied herein is from sources we deem reliable. It is provided without any representation, warranty, or guarantee, expressed or implied as to its accuracy. Prospective Buyer or Tenant should conduct an independent investigation and verification of all matters deemed to be material, including, but not limited to, statements of income and expenses. Consult your attorney, accountant, or other professional advisor. All Kidder Mathews designs are the sole property of Kidder Mathews. Branded materials and layouts are not authorized for use by any other firm or person.

