



FOR LEASE

CENTRAL AVENUE SHOPPES

2122 Central Avenue, Augusta, GA 30904

**SHERMAN &
HEMSTREET**
Real Estate Company

JOE EDGE, SIOR, CCIM

President & Broker

jedge@shermanandhemstreet.com

706.288.1077

Property Summary



PROPERTY DESCRIPTION

This property is on a highly visible Central Avenue and is great for a number of tenant uses. The strip center is located in the heart of the Central Avenue retail district. The immediate area is characterized by well known Augusta hot spots such as Southbound Smokehouse, Buona Cafe, Sheehan's Irish Pub, and Becks Oyster Bar. We are very close to the Medical District which includes Augusta University Medical Center, the Charlie Norwood VA Hospital, and University Hospital. This is a great center in the heart of the Augusta "Hill" District at bargain rates.

PROPERTY HIGHLIGHTS

- High visibility on Central Avenue
- Great for artists, boutiques and barbers

OFFERING SUMMARY

Lease Rate:	\$1,000.00 per month (MG)
Available SF:	480 SF

DEMOGRAPHICS	1 MILE	3 MILES	5 MILES
Total Households	3,650	26,345	57,228
Total Population	8,521	60,935	134,197
Average HH Income	\$54,208	\$46,333	\$49,948



JOE EDGE, SIOR, CCIM
President & Broker
jedge@shermanandhemstreet.com
706.288.1077

Lease Spaces



LEASE INFORMATION

Lease Type:	MG	Lease Term:	Negotiable
Total Space:	480 SF	Lease Rate:	\$1,000.00 per month

AVAILABLE SPACES

SUITE	TENANT	SIZE (SF)	LEASE TYPE	LEASE RATE
2130 Central Avenue	Available	480 SF	Modified Gross	\$1,000 per month



JOE EDGE, SIOR, CCIM
President & Broker
jedge@shermanandhemstreet.com
706.288.1077

Additional Photos



**SHERMAN &
HEMSTREET**
Real Estate Company

JOE EDGE, SIOR, CCIM
President & Broker
jedge@shermanandhemstreet.com
706.288.1077

FOR LEASE | CENTRAL AVENUE SHOPPES | 2122 CENTRAL AVENUE, AUGUSTA, GA 30904

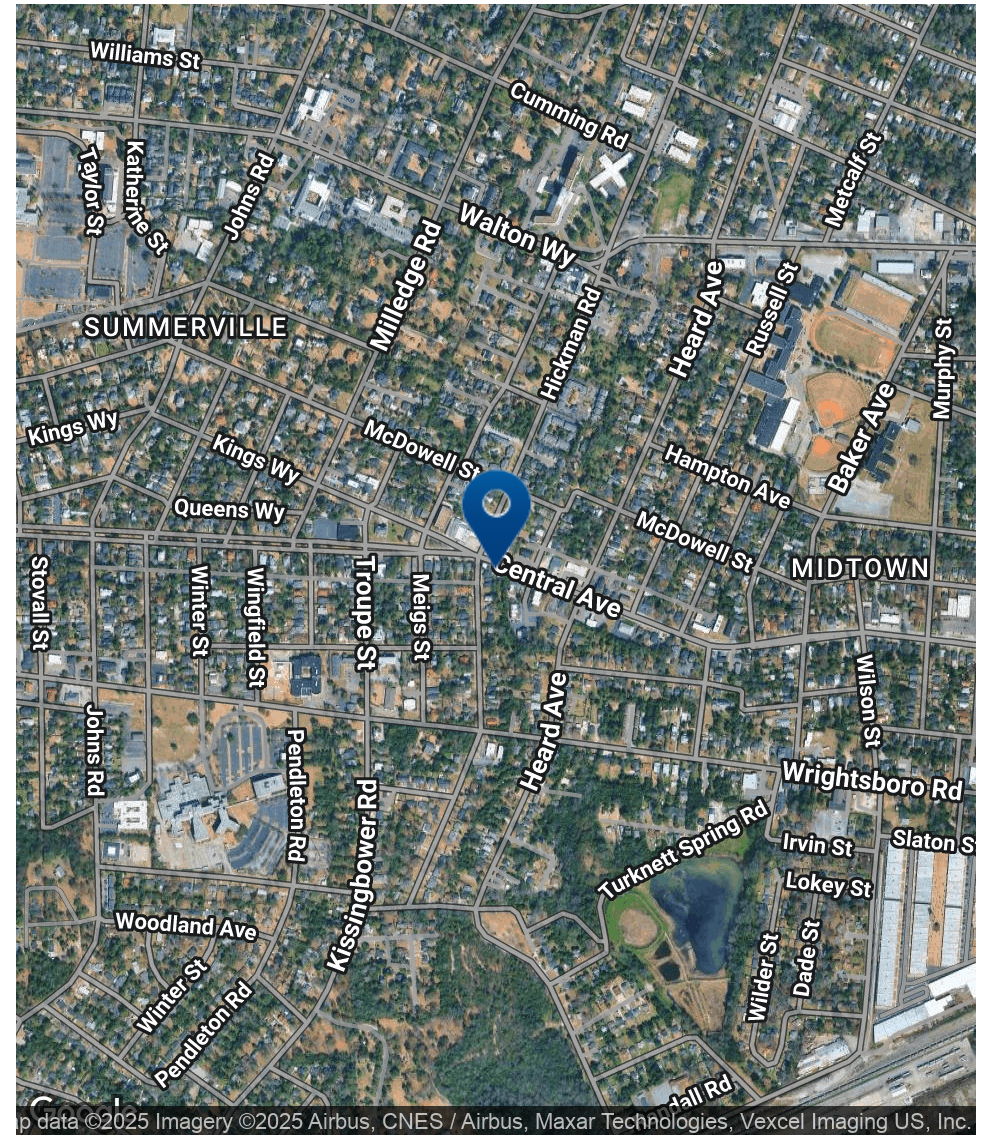
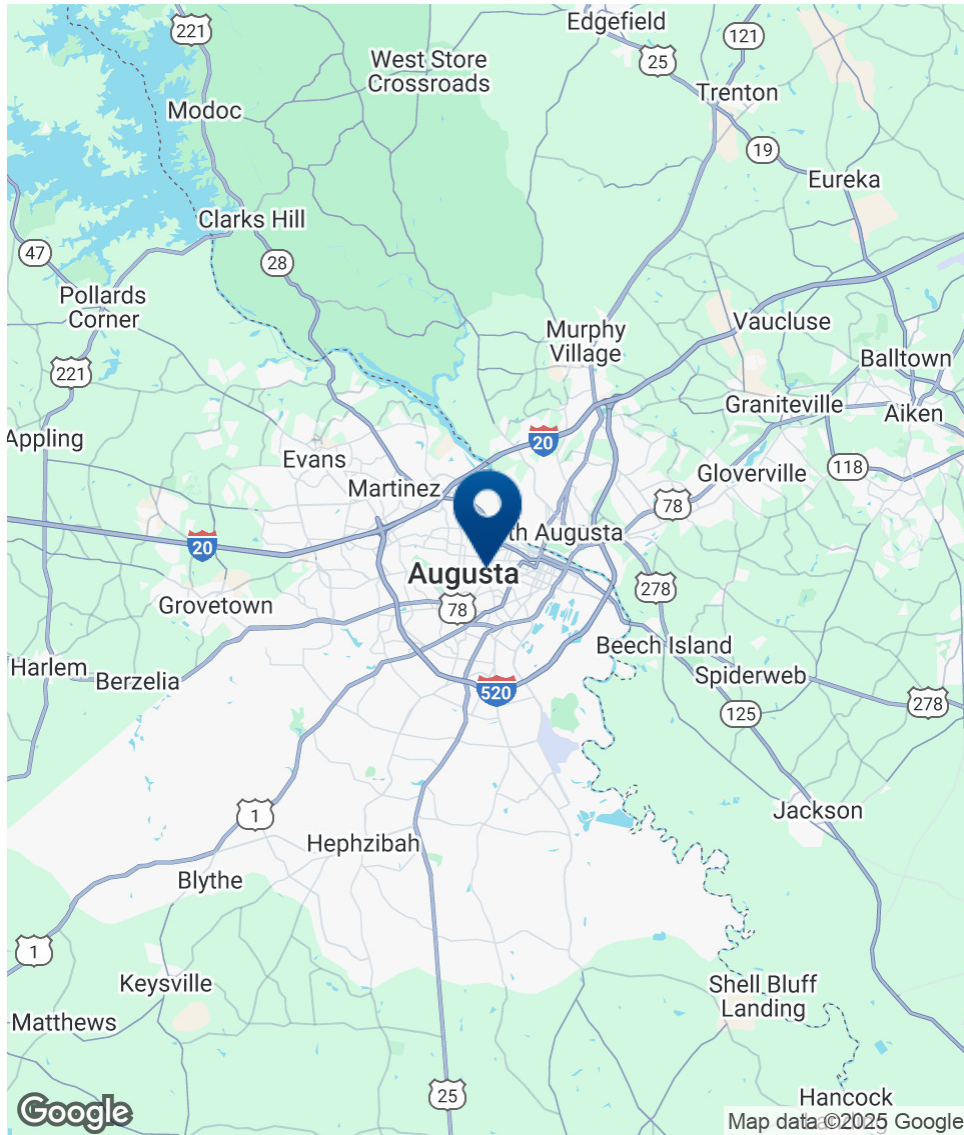
Additional Photos



**SHERMAN &
HEMSTREET**
Real Estate Company

JOE EDGE, SIOR, CCIM
President & Broker
jedge@shermanandhemstreet.com
706.288.1077

Location Map



**SHERMAN &
HEMSTREET**
Real Estate Company

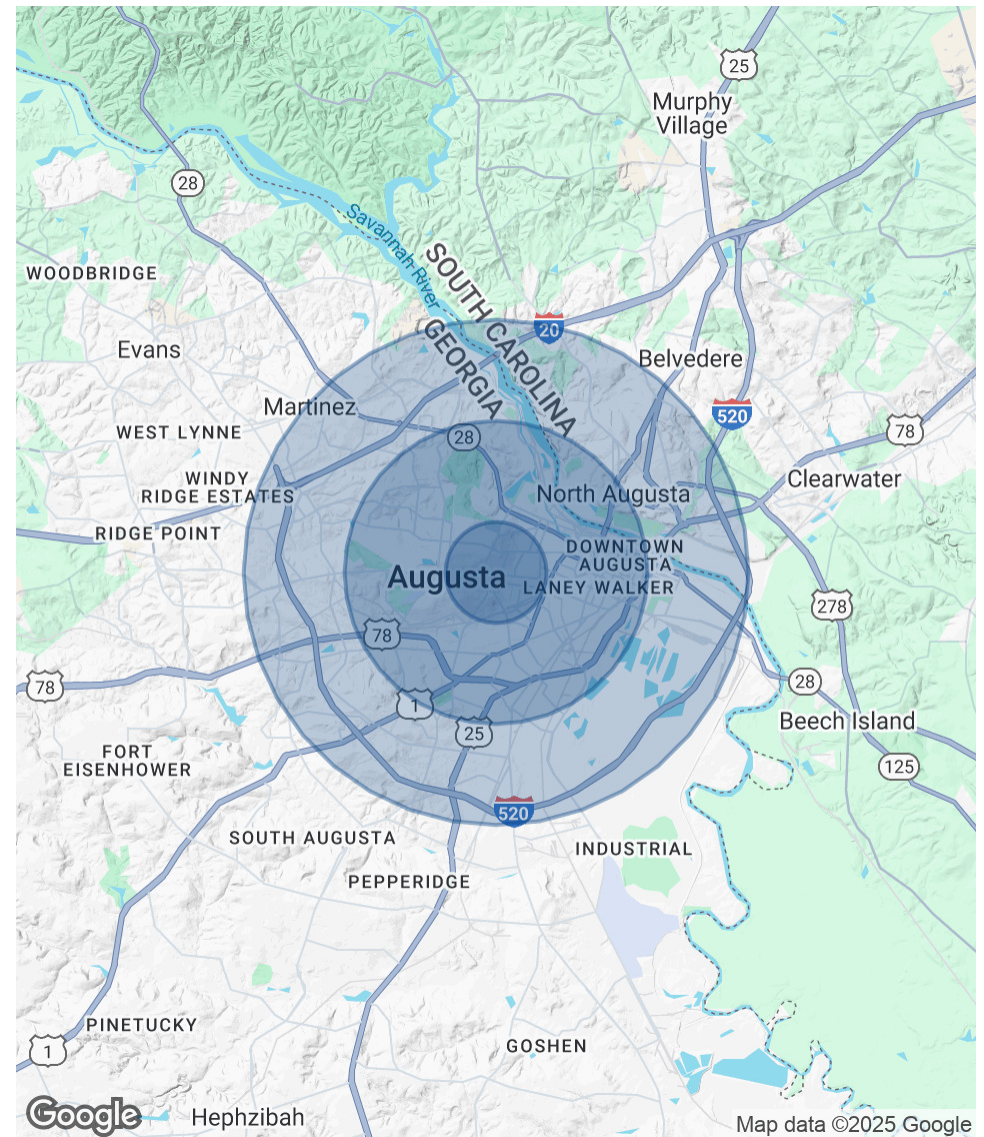
JOE EDGE, SIOR, CCIM
President & Broker
jedge@shermanandhemstreet.com
706.288.1077

Demographics Map & Report

POPULATION	1 MILE	3 MILES	5 MILES
Total Population	8,521	60,935	134,197
Average Age	35.5	36.2	36.1
Average Age (Male)	34.4	35.0	34.7
Average Age (Female)	36.1	37.4	37.6

HOUSEHOLDS & INCOME	1 MILE	3 MILES	5 MILES
Total Households	3,650	26,345	57,228
# of Persons per HH	2.3	2.3	2.3
Average HH Income	\$54,208	\$46,333	\$49,948
Average House Value		\$120,539	\$127,555

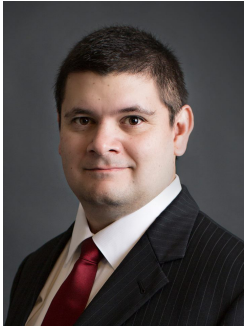
* Demographic data derived from 2020 ACS - US Census



SHERMAN & HEMSTREET
Real Estate Company

JOE EDGE, SIOR, CCIM
President & Broker
jedge@shermanandhemstreet.com
706.288.1077

Advisor Bio 1



JOE EDGE, SIOR, CCIM

President & Broker

jedge@shermanandhemstreet.com

Direct: 706.288.1077 | **Cell:** 706.627.2789

PROFESSIONAL BACKGROUND

Joe Edge is a seasoned commercial real estate broker with more than twenty years of experience in the commercial real estate industry. Following four years of service in the United States Marine Corps, he began his career in real estate and, in 2006, acquired Sherman & Hemstreet Real Estate, a firm that now has more than a century of history. Under his leadership, Sherman & Hemstreet has grown into one of the largest commercial real estate firms in the area, providing comprehensive real estate services across the Southeastern United States.

Licensed in both Georgia and South Carolina, Joe personally oversees transactions throughout both states. He holds the Certified Commercial Investment Member (CCIM) and Society of Industrial and Office Realtors (SIOR) designations—two of the most prestigious credentials in the industry. The CCIM designation represents the highest level of expertise for investment sales brokers, while the SIOR designation recognizes top-tier office and industrial brokers who meet rigorous production and performance standards. In addition, Joe is a candidate for the Certified Property Manager (CPM) designation, reflecting his commitment to excellence in property management.

Through his leadership, Sherman & Hemstreet continues to set the standard for commercial real estate services in the region, building on its historic legacy with innovative strategies and a client-focused approach.

MEMBERSHIPS

Certified Commercial Investment Member (CCIM)

Sherman & Hemstreet Real Estate Company

4316 Washington Road
Evans, GA 30809
706.722.8334



JOE EDGE, SIOR, CCIM

President & Broker

jedge@shermanandhemstreet.com

706.288.1077