



Kapahulu Avenue
Investment Opportunity

813 Kapahulu Ave

Honolulu, HI 96816



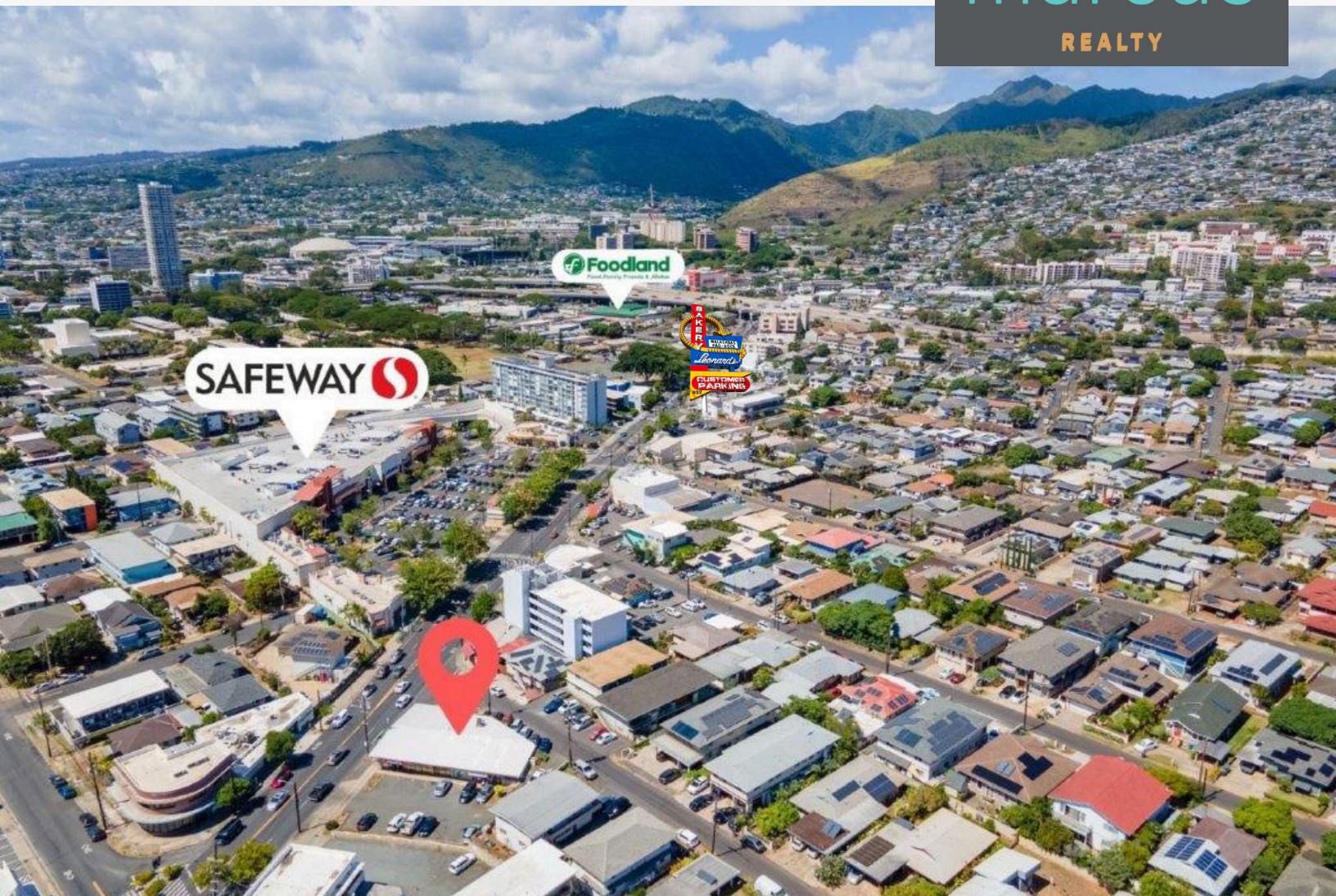
PROPERTY SUMMARY

- ASKING PRICE: \$5,900,000
- TMK (1) 3-1-3:8
- TENURE: FEE SIMPLE
- PARKING: 16 STALLS
- ZONING: B-2
- PROP. TAX: \$4,239/MO.
- BUILDING SIZE: 4,108 SF
- LAND SIZE: 11,809 SF

Learn more at
marcushawaii.com

Seller & Seller's brokerage make no guarantees on any information contained herein.

813 KAPAHULU AVENUE
HONOLULU, HI 96816
B-2 ZONED PROPERTY
FOR SALE \$5,900,000



Rare opportunity to acquire a prime, corner parcel on Kapahulu Avenue. Perfect for owner-user, investor or developer. Ingress/egress from Kapahulu Avenue and Paliuli Street. Approximately 4,108 square feet of single-story retail building plus sixteen (16) parking stalls on 11,809 square feet of B-2 zoned land. Current tenant has a lease that expires on 6/30/2025. Call Listor for details. DO NOT DISTURB TENANTS.



Kevin Nishikawa

President | Partner - Commercial Division
RB-17304

(808) 220-9220

kevin@marcushawaii.com



Alexander C Yen

AVP | Commercial Division
RA-81293

(808) 392-6475

alexandery@marcushawaii.com



www.MarcusHawaii.com

Seller or Seller's brokerage makes no guarantees on any information contained herein.