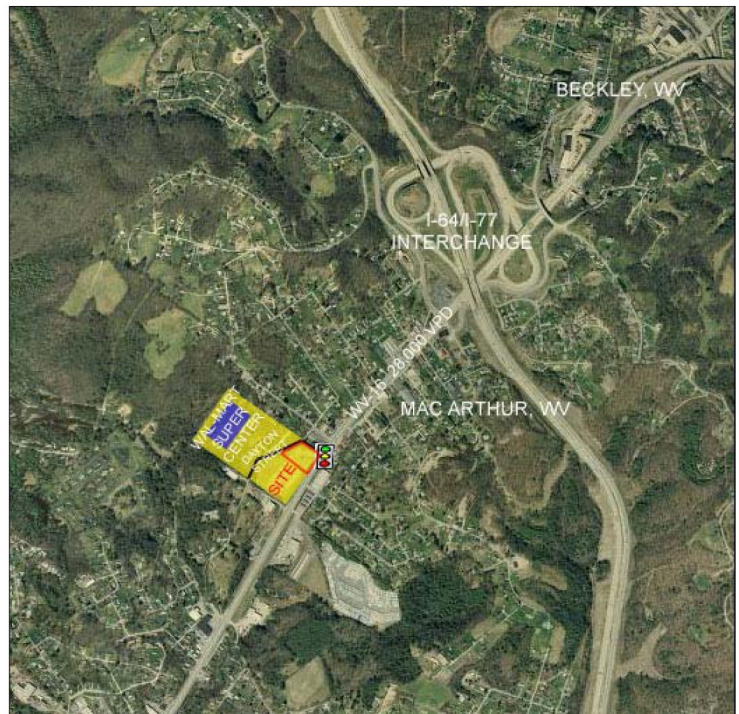
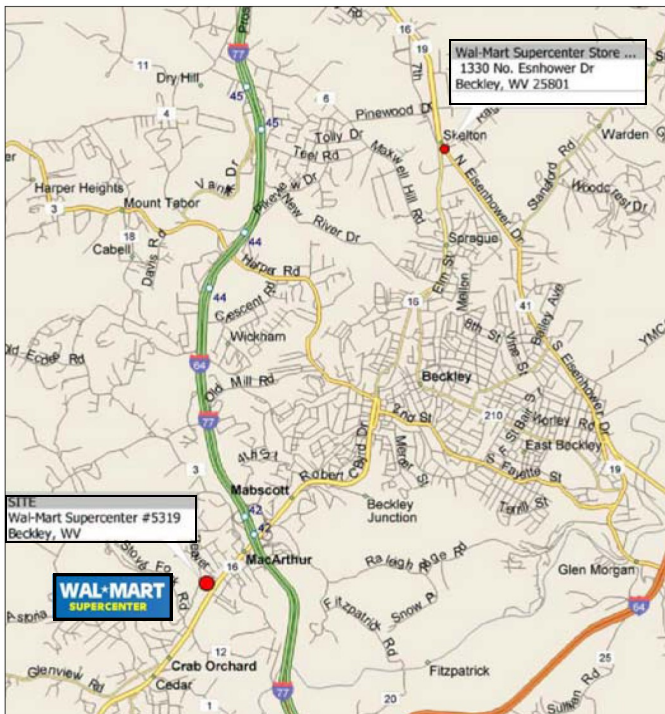


The Shops at Mac Arthur

Beckley, West Virginia

SPACE AVAILABLE



PARAMOUNT
DEVELOPMENT CORPORATION

263 White Oak Drive
Beckley, WV 25801

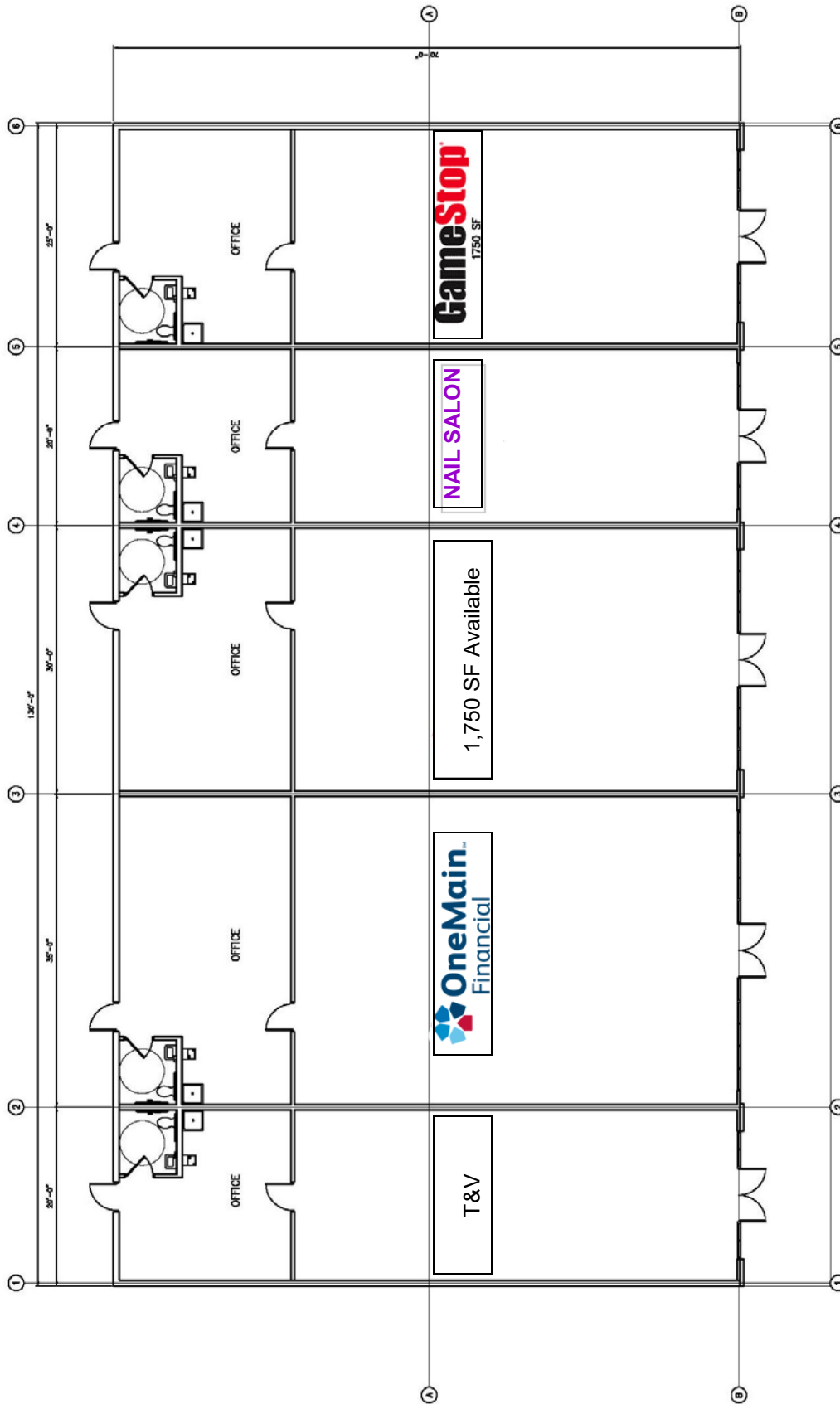
Phone: 304-860-0682
www.paramountdevcorp.com

- LOCATED AT SIGNALIZED ENTRANCE TO WAL-MART SUPERCENTER
- LESS THAN 1/2 MILE FROM THE I-77/I-64 & WV-16 INTERCHANGE
- WV-16 TRAFFIC COUNT 20,000 (ADT)
- POPULATION (3 MILES) 20,281
- POPULATION (5 MILES) 39,089

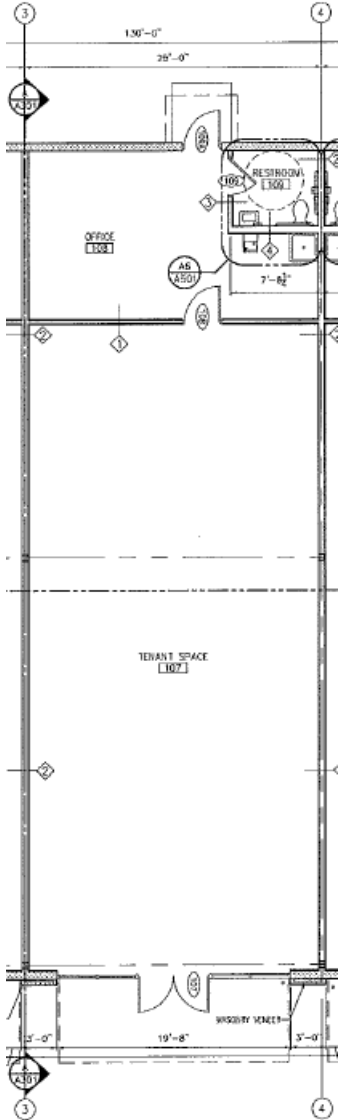


The Shops at Mac Arthur

Beckley, WV







FLOOR PLAN
 SCALE: 3/16" = 1'-0"

Summary Profile

2010-2020 Census, 2021 Estimates with 2026 Projections
 Calculated using Weighted Block Centroid from Block Groups



Lat/Lon: 37.7533/-81.2193

117 Dayton St	3 mi	5 mi
MacArthur, WV 25873	radius	radius
Population		
2021 Estimated Population	20,281	39,089
2026 Projected Population	19,174	37,009
2020 Census Population	20,419	39,458
2010 Census Population	21,233	41,446
Projected Annual Growth 2021 to 2026	-1.1%	-1.1%
Historical Annual Growth 2010 to 2021	-0.4%	-0.5%
2021 Median Age	40.7	42.8
Households		
2021 Estimated Households	8,671	16,858
2026 Projected Households	9,094	17,728
2020 Census Households	8,731	17,011
2010 Census Households	9,107	17,834
Projected Annual Growth 2021 to 2026	1.0%	1.0%
Historical Annual Growth 2010 to 2021	-0.4%	-0.5%
Race and Ethnicity		
2021 Estimated White	74.5%	78.8%
2021 Estimated Black or African American	15.7%	12.6%
2021 Estimated Asian or Pacific Islander	2.8%	2.3%
2021 Estimated American Indian or Native Alaskan	0.2%	0.2%
2021 Estimated Other Races	6.8%	6.1%
2021 Estimated Hispanic	2.1%	2.1%
Income		
2021 Estimated Average Household Income	\$60,165	\$64,096
2021 Estimated Median Household Income	\$46,633	\$45,910
2021 Estimated Per Capita Income	\$25,834	\$27,780
Education (Age 25+)		
2021 Estimated Elementary (Grade Level 0 to 8)	4.4%	4.4%
2021 Estimated Some High School (Grade Level 9 to 11)	7.1%	8.4%
2021 Estimated High School Graduate	37.8%	39.2%
2021 Estimated Some College	23.7%	21.2%
2021 Estimated Associates Degree Only	8.5%	8.0%
2021 Estimated Bachelors Degree Only	12.1%	12.0%
2021 Estimated Graduate Degree	6.5%	6.7%
Business		
2021 Estimated Total Businesses	785	1,601
2021 Estimated Total Employees	11,136	20,426
2021 Estimated Employee Population per Business	14.2	12.8
2021 Estimated Residential Population per Business	25.8	24.4