

101

CONSTITUTION

Where Influence
MEETS DISTINCTION

101 CONSTITUTION AVENUE, NW

WHERE *INFLUENCE* MEETS *DISTINCTION*

101 Constitution Avenue is Washington, D.C.'s most prestigious address for professionals who thrive at the center of influence. As the closest commercial office building to the U.S. Capitol building, 101 Constitution offers a unique opportunity to work and collaborate with global decision-makers. Enjoy expansive, unobstructed views of the Capitol and access to luxurious and impactful amenities designed for today's top-tier tenants. From an elegant, fully renovated lobby to an exclusive rooftop terrace and event space, 101 Constitution is where Washington's most influential come to work, connect, and achieve.

BUILDING HIGHLIGHTS:

Total Size: 511,338 SF | Typical Floor Size: 52,670 SF

Ten stories with views of Capitol Hill and iconic monuments

500-car covered parking garage with elevated services

24/7 security & on-site property management

Two-level spa-like fitness center

Premier on-site dining

Full-service coffee bar



WATCH A
VIDEO TOUR





CAPITOL HILL'S PRIME ADDRESS

Positioned directly across from the U.S. Capitol, 101 Constitution brings your organization to the center of influence. This historic property isn't just an address—it's a statement.



HIGHWAY ACCESS TIMES

I-395: Three minutes
 I-295: Five minutes
 I-66: Ten minutes

RESTAURANTS

Lucille's Modern Chophouse
 The Capital Grille
 Fiola
 Minibar
 Fast casual options at Union Station including Cava, Chopt, Potbelly and Shake Shack

HOTELS

The Royal Sonesta Capitol Hill
 Kimpton George Hotel
 Hyatt Regency Washington on Capitol Hill
 Phoenix Park Hotel
 Capitol Hill Hotel

ATTRACTIONS

National Gallery of Art
 Smithsonian National Air and Space Museum
 Walter E. Washington Convention Center
 Capital One Arena
 Smithsonian's National Postal Museum
 Union Station

Unmatched Accessibility in Washington's Power Corridor

101 Constitution is minutes away from the Capitol, Union Station, and multiple metro lines, ensuring quick commutes and immediate access to all that Washington, D.C., has to offer.

LOCATION HIGHLIGHTS:

Proximity: Steps from the Capitol and key federal buildings.

Parking: On-site 300-car covered parking with car wash, reserved spots and electric car charging stations.

Security & Access: 24-hour access with direct elevators for private entry.

SPECIFICATIONS

From Plans *to Perfection*

Building Architect: Shalom Baranes

Total Rentable Building Area: 548,313 RSF

Number of Floors: 10 floors above ground, one concourse level, and four levels of underground parking

Typical Floor Size: Approximately 55,309 RSF

Typical Column Spacing: 30' x 30'

Typical Slab Heights: Floors 2-10 = 10' 10", Ground Level + 11'6", Concourse Level = 12'

Parking: On-site 500-car covered parking

HVAC: Modern variable air volume distribution system with two chilled air handling units on each floor.

Elevators: 12-high speed elevators with five passenger elevators and one dedicated freight elevator in each core. Three separate elevators are dedicated to servicing the parking garage.



GROUND FLOOR

BIKE ROOM

1,268 SF

TWO-LEVEL FITNESS CENTER

10,768 SF

F&B RETAIL

6,898 SF

FUTURE RESTAURANT

LOBBY

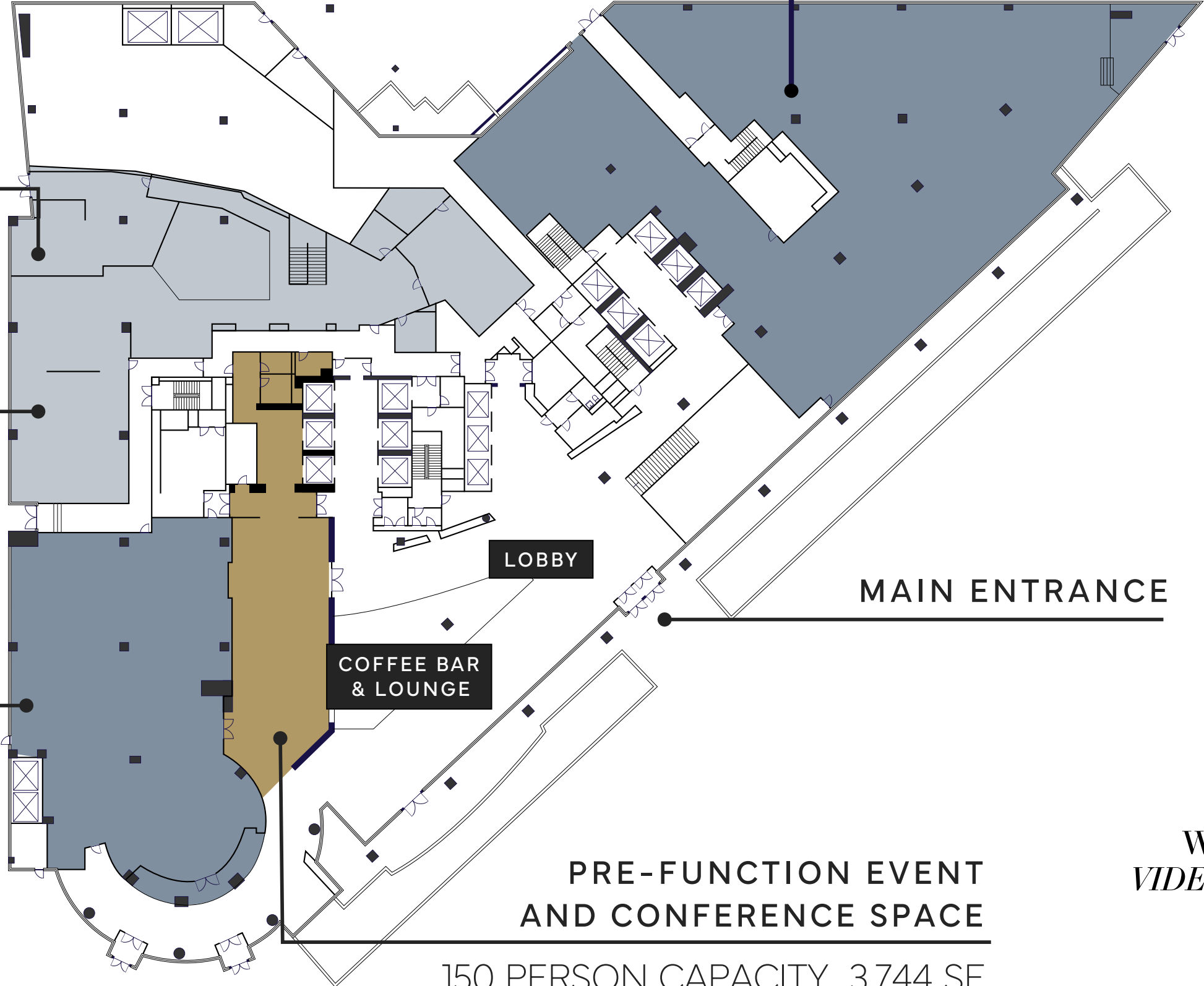
COFFEE BAR & LOUNGE

MAIN ENTRANCE

PRE-FUNCTION EVENT AND CONFERENCE SPACE

150 PERSON CAPACITY 3,744 SF

WATCH A VIDEO TOUR



FEATURES

Unrivaled Amenities for *Work, Wellness and Leisure*

The newly renovated rooftop terrace at 101 Constitution offers a setting beyond compare. With both indoor and outdoor spaces, the terrace is perfect for hosting events, impressing clients, or simply unwinding after a productive day.

The terrace offers 7,100 SF of interior space and 11,900 SF of outdoor entertaining areas with stunning views of landmarks like the Capitol, Union Station, and the Washington Monument.

Features: Pergola shade structures, raised planters, bocce ball court and beautifully landscaped areas. Also includes catering kitchen and green room for VIP speakers with restroom, dressing room and TV lounge.

Event Capacity: Multiple simultaneous events, making it the perfect venue for networking and gatherings including an option for private event bar.



ROOFTOP TERRACE

An Unmatched Rooftop Experience *with views of the Capital's iconic landmarks*

Enjoy expansive rooftop views of D.C.'s landmarks, a two-story lobby with coffee bar and concierge services. The building's renovation elevates every space, from a state-of-the-art two-story fitness center to an advanced 6,000 SF conference facility with capacity for 175 guests.

Rooftop terrace with panoramic views, catering and event space

Newly expanded conference center

Spa-quality, two-level fitness center

24-hour on-site security

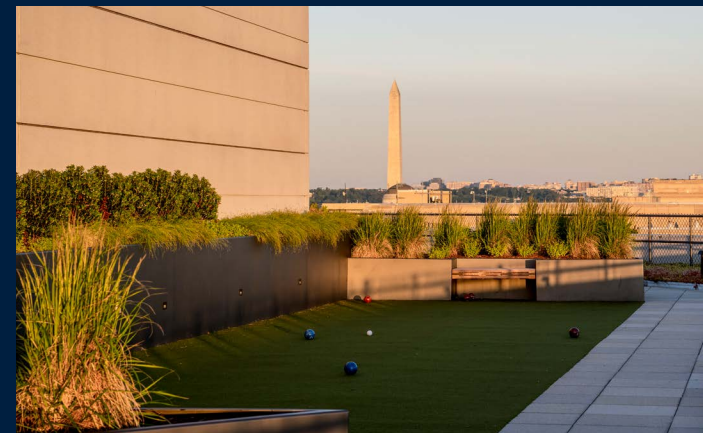
Covered parking with premium services

On-site coffee and refreshment bar

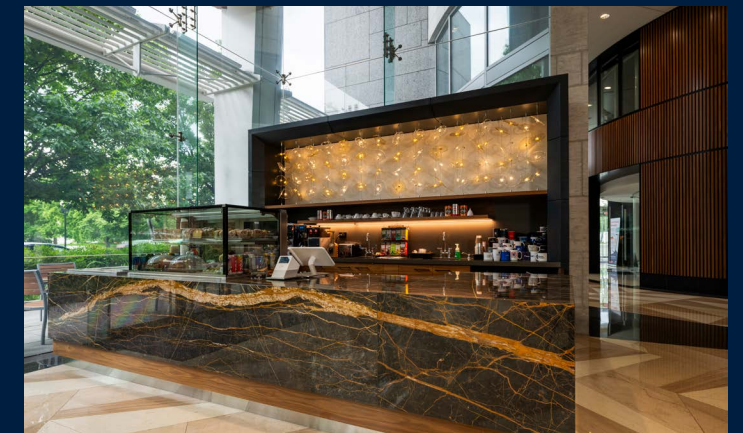
Dedicated concierge service



Outdoor seating under the shaded pergola



Bocce ball court and monumental views from the roof



Full-service coffee bar located on the ground floor



Rooftop terrace with indoor and outdoor spaces surrounded by panoramic views

ROOFTOP

CAPACITY

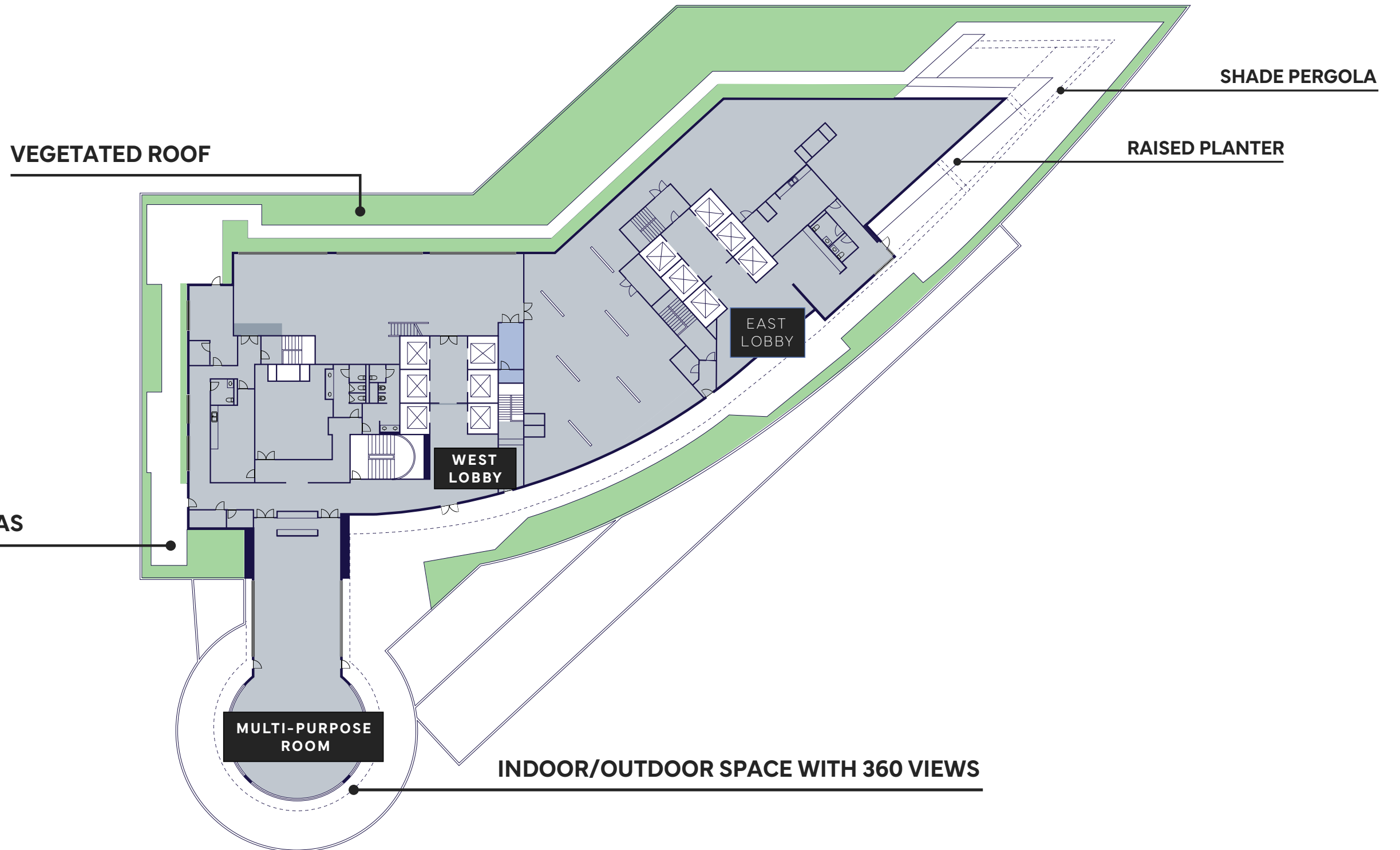
600 PERSON

INTERIOR ENTERTAINING SPACE

7,100 SF

OUTDOOR ENTERTAINING SPACE

11,900 SF



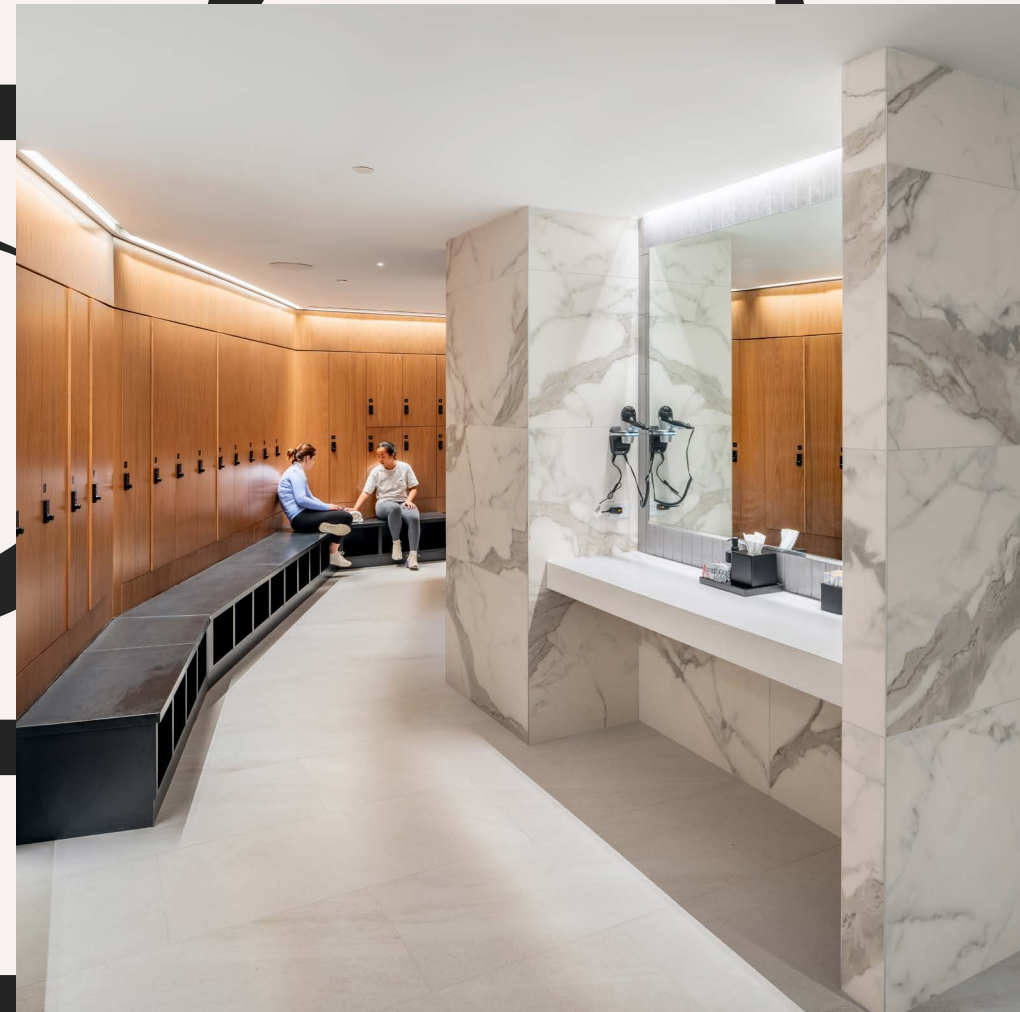


ELEVATED WELLNESS

The rooftop terrace offers a serene outdoor escape, complete with stunning, expansive views—ideal for taking mindful breaks. Downstairs, the airy, two-story lobby features a convenient coffee bar, perfect for a mid-day energy boost. For those who incorporate personal wellness with their commute by bike, the building provides a secure street-level bike room with direct access to the fitness center and locker rooms. Every amenity is thoughtfully designed to support a balanced and fulfilling lifestyle.

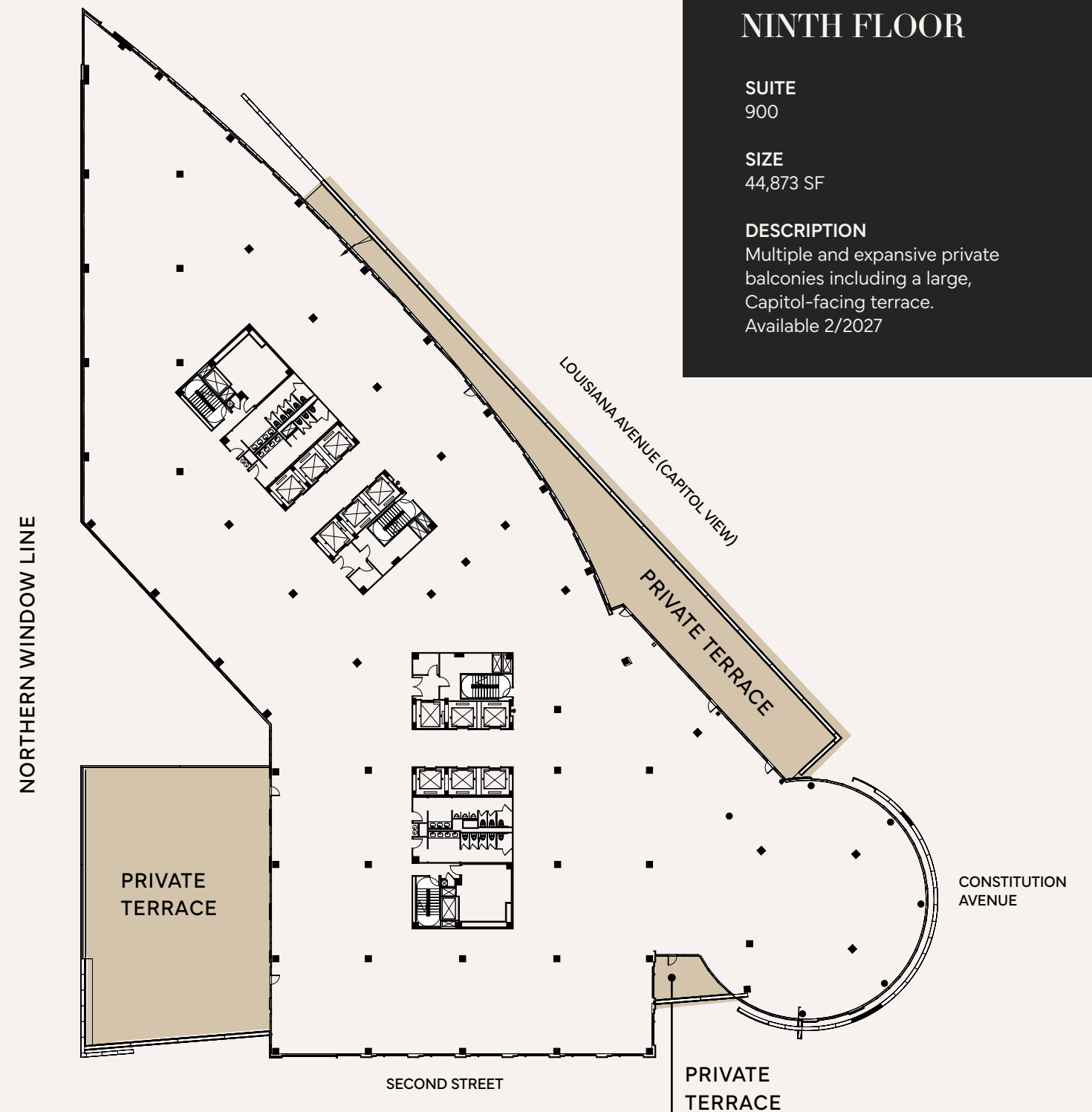
FITNESS CENTER

- Studio for fitness classes
- Private training rooms for virtual training
- TRX machine
- Recovery area with recovery air compression boots
- Two power lifting stations
- Cardio machines
- Locker rooms with saunas and clothes steam cleaner



AVAILABILITIES

AVAILABILITIES	SF	DATE AVAILABLE
900	44,873 SF	2/2027
850 West	10,527 SF	2/2027
700	25,000 - 54,784 SF	2/2027
475 East	2,672 SF	Immediately
100 West	6,592 SF	Immediately



NINTH FLOOR

SUITE
900

SIZE
44,873 SF

DESCRIPTION
Multiple and expansive private balconies including a large, Capitol-facing terrace.
Available 2/2027

LEASING INFORMATION: 202.513.6700

101 CONSTITUTION

MERRILL TURNBULL
MTurnbull@LPC.com
202.513.6713

ADAM BIBERAJ
abiberaj@lpc.com
202.513.6736

TIM WHITEBREAD
twhitebread@lpc.com
202.513.6712

Lincoln

NORTHERN WINDOW LINE



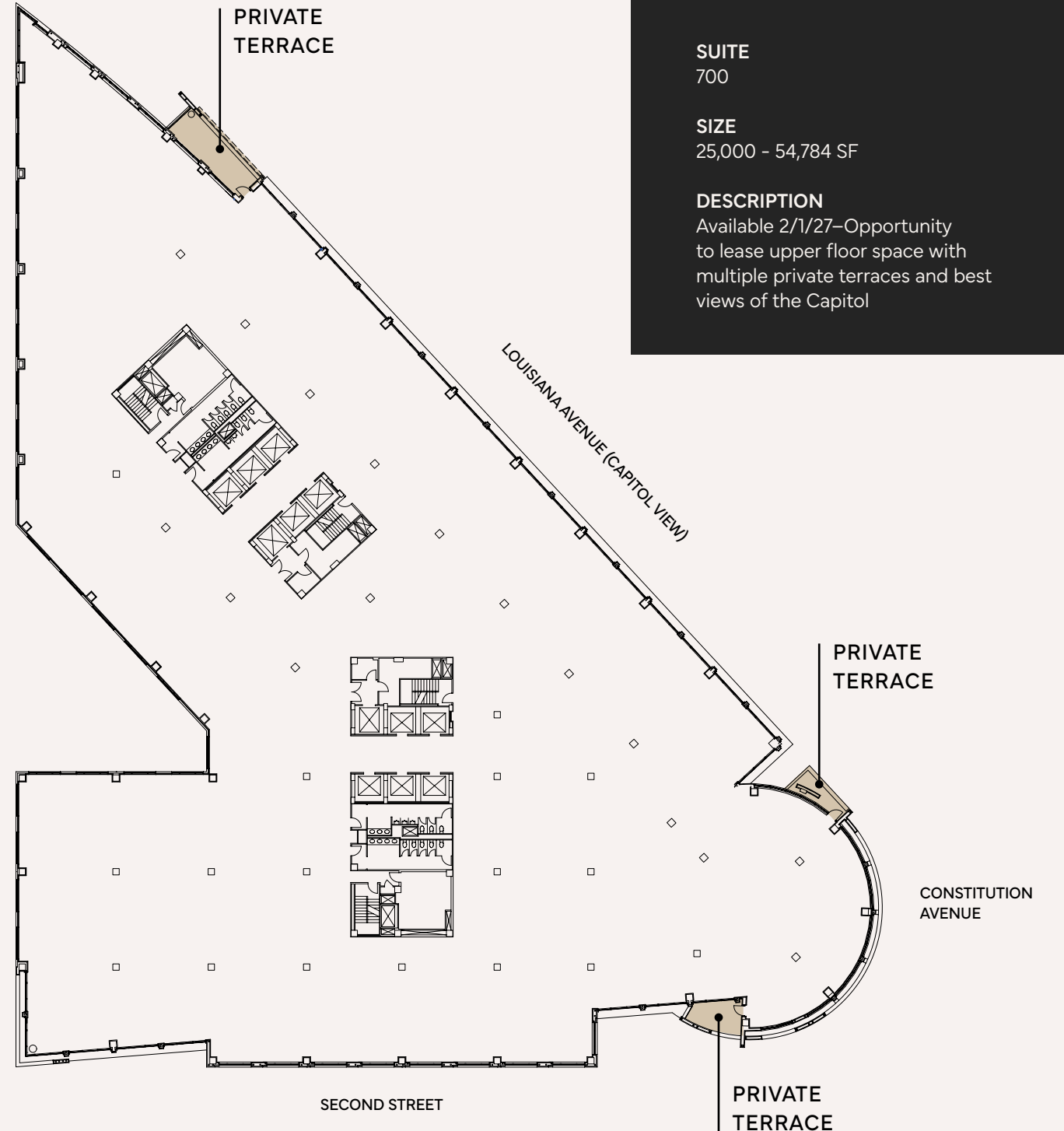
EIGHTH FLOOR

SUITE
850 West

SIZE
10,527 SF

DESCRIPTION
Available 2/2027

NORTHERN WINDOW LINE



SEVENTH FLOOR

SUITE
700

SIZE
25,000 - 54,784 SF

DESCRIPTION
Available 2/1/27—Opportunity to lease upper floor space with multiple private terraces and best views of the Capitol

LEASING INFORMATION: 202.513.6700

MERRILL TURNBULL
MTurnbull@LPC.com
202.513.6713

ADAM BIBERAJ
abiberaj@lpc.com
202.513.6736

TIM WHITEBREAD
twhitebread@lpc.com
202.513.6712

Lincoln

101 CONSTITUTION

LEASING INFORMATION: 202.513.6700

MERRILL TURNBULL
MTurnbull@LPC.com
202.513.6713

ADAM BIBERAJ
abiberaj@lpc.com
202.513.6736

TIM WHITEBREAD
twhitebread@lpc.com
202.513.6712

101 CONSTITUTION

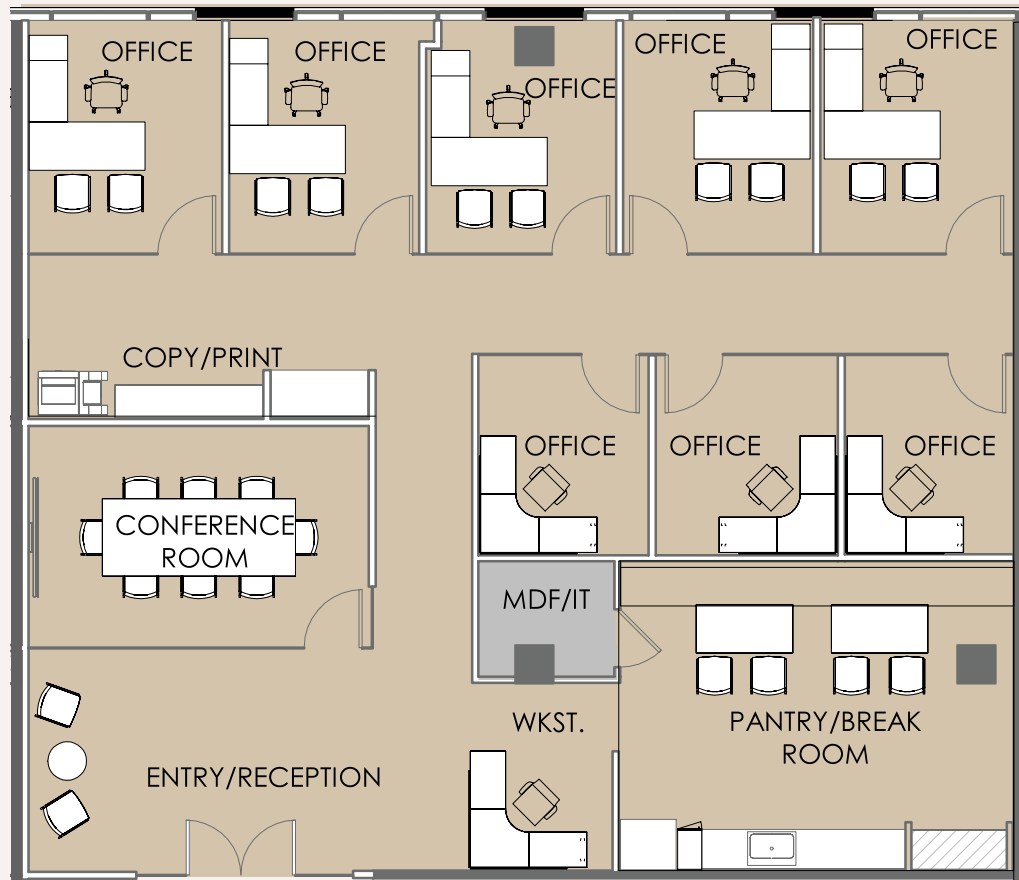
Lincoln

FOURTH FLOOR

SUITE
475 East

SIZE
2,672 SF

DESCRIPTION
Pre-built spec suite delivers year-end 2026. Great Elevator exposure.



LEASING INFORMATION: 202.513.6700

MERRILL TURNBULL
MTurnbull@LPC.com
202.513.6713

ADAM BIBERAJ
abiberaj@lpc.com
202.513.6736

TIM WHITEBREAD
twhitebread@lpc.com
202.513.6712

Lincoln

FIRST FLOOR

SUITE
100 West

SIZE
6,592 SF

DESCRIPTION
Available immediately
Available for retail use with direct access to Second Street



LEASING INFORMATION: 202.513.6700

MERRILL TURNBULL
MTurnbull@LPC.com
202.513.6713

ADAM BIBERAJ
abiberaj@lpc.com
202.513.6736

TIM WHITEBREAD
twhitebread@lpc.com
202.513.6712

101 CONSTITUTION

Lincoln



Here, conversations and decisions take place that influence not just our city, but the world. Experience Washington's premier office space.

Discover why 101 Constitution is the top choice for elite organizations, law firms, and businesses. With luxurious amenities, historic views, and prime accessibility, this address truly is one of one.

101CONSTITUTION.COM

101 Constitution Avenue, NW
Washington, DC 20001

Leasing Information:
202.513.6700

MERRILL TURNBULL

MTurnbull@LPC.com
202.513.6713

ADAM BIBERAJ

abiberaj@lpc.com
202.513.6736

TIM WHITEBREAD

twhitebread@lpc.com
202.513.6712

Lincoln

101 Constitution Avenue, NW
Suite 325 East
Washington, DC 20001

www.lpc.com

The information contained herein has been obtained through sources deemed reliable but neither Owner nor Lincoln Property Company makes guarantees, warranties or representations to its completeness or accuracy.