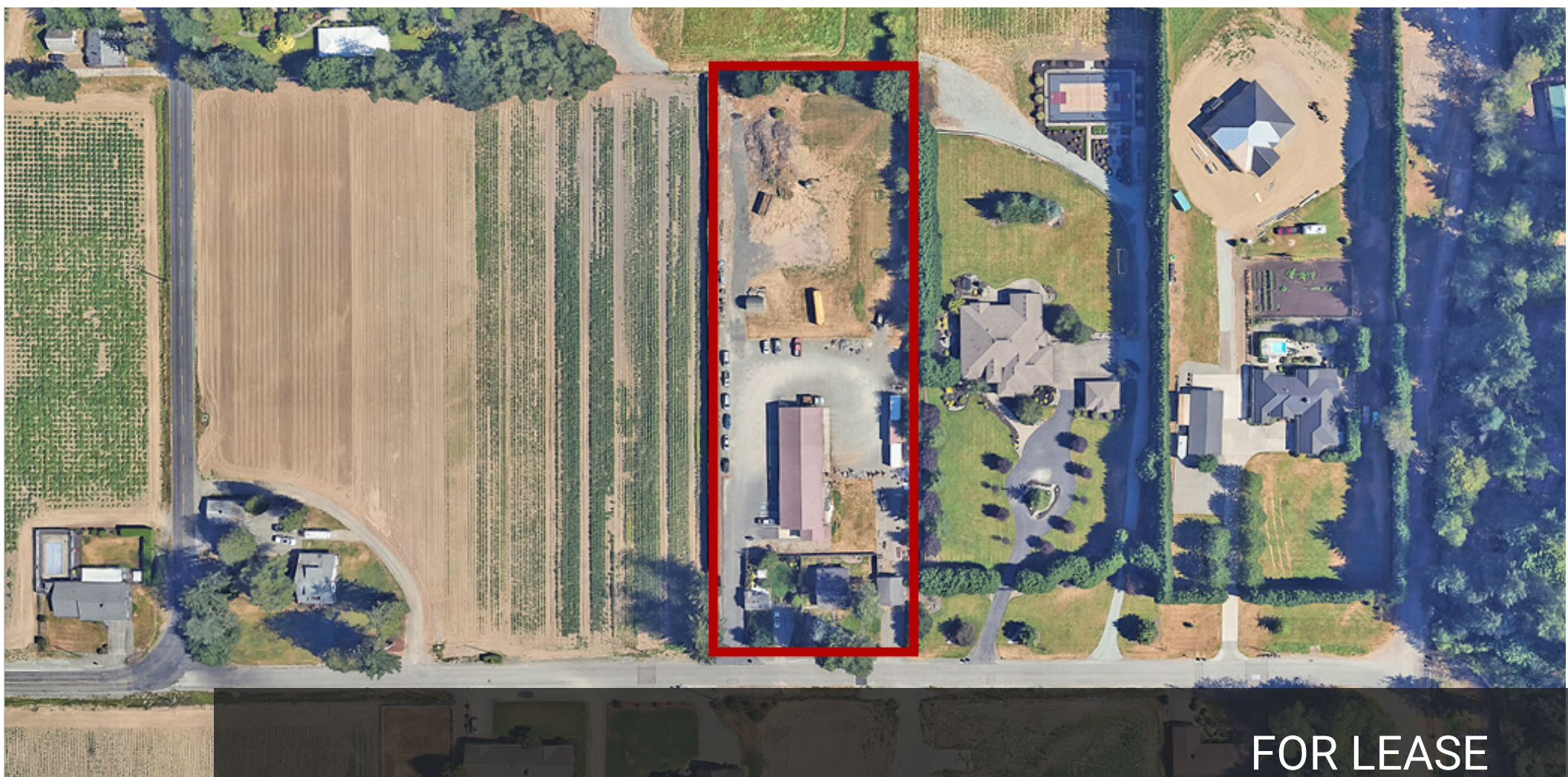


INDUSTRIAL FOR LEASE

## SUMNER CONTRACTOR YARD

16723 78TH STREET EAST, SUMNER, WA 98390



FOR LEASE

**KELLER WILLIAMS COMMERCIAL**

1029 E Main, Suite 201  
Puyallup, WA 98372



Each Office Independently Owned and Operated

**PRESENTED BY:**

**RICK BROWN**

Commercial Broker  
O: (253) 840-5574  
C: (253) 617-9460  
rickbrown@kw.com  
Lic: 27026, WA

We obtained the information above from sources we believe to be reliable. However, we have not verified its accuracy and make no guarantee, warranty or representation about it. It is submitted subject to the possibility of errors, omissions, change of price, rental or other conditions, prior sale, lease or financing, or withdrawal without notice. We include projections, opinions, assumptions or estimates for example only, and they may not represent current or future performance of the property. You and your tax and legal advisors should conduct your own investigation of the property and transaction.

# DISCLAIMER

16723 78TH STREET EAST



All materials and information received or derived from KW Commercial its directors, officers, agents, advisors, affiliates and/or any third party sources are provided without representation or warranty as to completeness, veracity, or accuracy, condition of the property, compliance or lack of compliance with applicable governmental requirements, developability or suitability, financial performance of the property, projected financial performance of the property for any party's intended use or any and all other matters.

Neither KW Commercial its directors, officers, agents, advisors, or affiliates makes any representation or warranty, express or implied, as to accuracy or completeness of the materials or information provided, derived, or received. Materials and information from any source, whether written or verbal, that may be furnished for review are not a substitute for a party's active conduct of its own due diligence to determine these and other matters of significance to such party. KW Commercial will not investigate or verify any such matters or conduct due diligence for a party unless otherwise agreed in writing.

EACH PARTY SHALL CONDUCT ITS OWN INDEPENDENT INVESTIGATION AND DUE DILIGENCE.

Any party contemplating or under contract or in escrow for a transaction is urged to verify all information and to conduct their own inspections and investigations including through appropriate third-party independent professionals selected by such party. All financial data should be verified by the party including by obtaining and reading applicable documents and reports and consulting appropriate independent professionals. KW Commercial makes no warranties and/or representations regarding the veracity, completeness, or relevance of any financial data or assumptions. KW Commercial does not serve as a financial advisor to any party regarding any proposed transaction.

All data and assumptions regarding financial performance, including that used for financial modeling purposes, may differ from actual data or performance. Any estimates of market rents and/or projected rents that may be provided to a party do not necessarily mean that rents can be established at or increased to that level. Parties must evaluate any applicable contractual and governmental limitations as well as market conditions, vacancy factors and other issues in order to determine rents from or for the property. Legal questions should be discussed by the party with an attorney. Tax questions should be discussed by the party with a certified public accountant or tax attorney. Title questions should be discussed by the party with a title officer or attorney. Questions regarding the condition of the property and whether the property complies with applicable governmental requirements should be discussed by the party with appropriate engineers, architects, contractors, other consultants, and governmental agencies. All properties and services are marketed by KW Commercial in compliance with all applicable fair housing and equal opportunity laws.

## KELLER WILLIAMS COMMERCIAL

1029 E Main, Suite 201

Puyallup, WA 98372



Each Office Independently Owned and Operated

## PRESENTED BY:

### RICK BROWN

Commercial Broker

O: (253) 840-5574

C: (253) 617-9460

rickbrown@kw.com

Lic: 27026, WA

The calculations and data presented are deemed to be accurate, but not guaranteed. They are intended for the purpose of illustrative projections and analysis. The information provided is not intended to replace or serve as substitute for any legal, accounting, investment, real estate, tax or other professional advice, consultation or service. The user of this software should consult with a professional in the respective legal, accounting, tax or other professional area before making any decisions.



## EXECUTIVE SUMMARY

16723 78TH STREET EAST



## OFFERING SUMMARY

**LEASE RATE:** \$9,000.00/Month MG

**LEASE TERM:** 60 Months

**BUILDING SF:** 5,040

**LOT SIZE:** 3.0 Acres

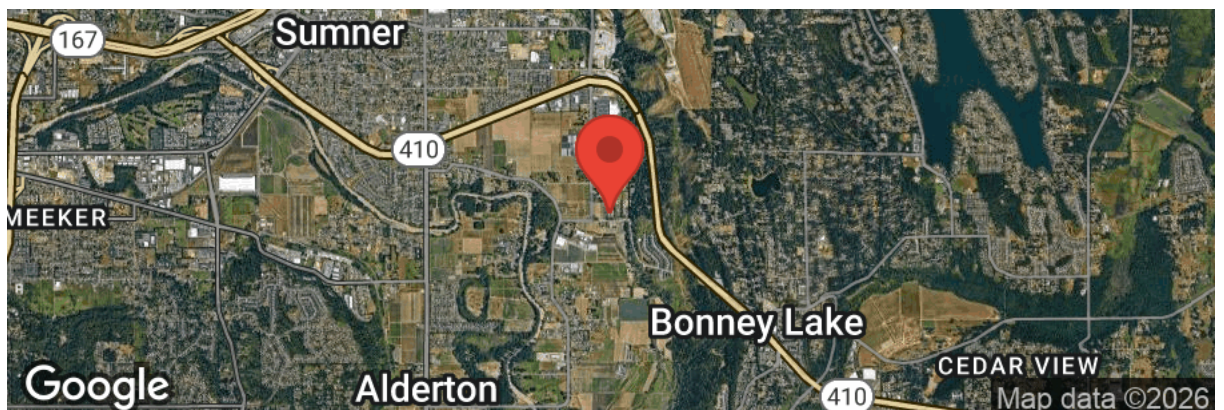
**RENOVATED:** 2000

**GENERAL USE:** Contractor Yard/Office

**ZONING:** R-10

## PROPERTY OVERVIEW

Located in the heart of Sumner's thriving industrial corridor, this +/- 5,040 SF commercial space is tailor-made for contractors and service-based businesses. Featuring a functional office layout and a private contractor yard, it offers the perfect base of operations for landscaping companies looking to grow and stay organized. With excellent access to regional transportation routes and plenty of room for equipment, crews, and administrative needs, this space delivers the flexibility and efficiency your business demands.



PROPERTY PHOTOS  
16723 78TH STREET EAST



# PROPERTY PHOTOS

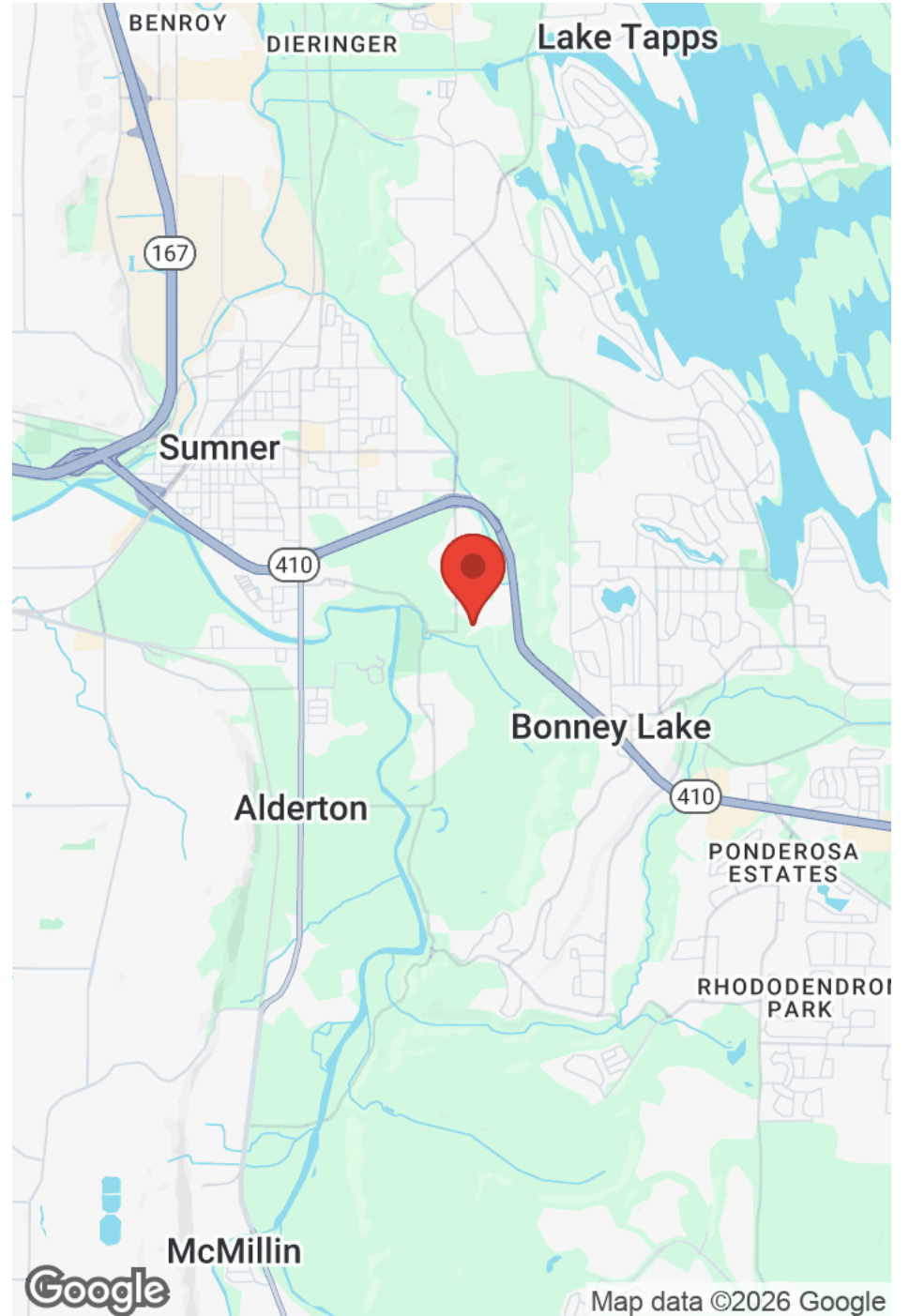
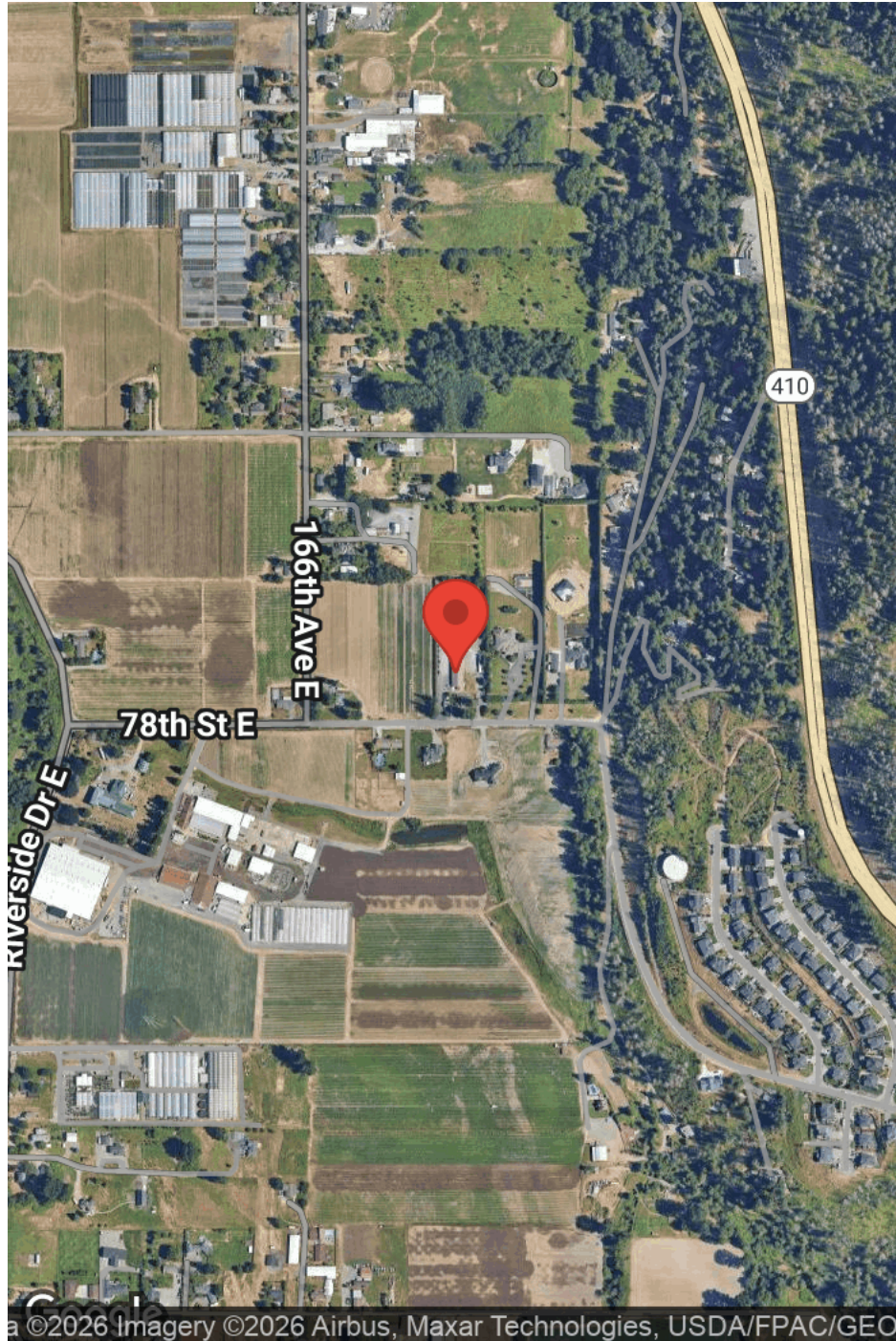
16723 78TH STREET EAST





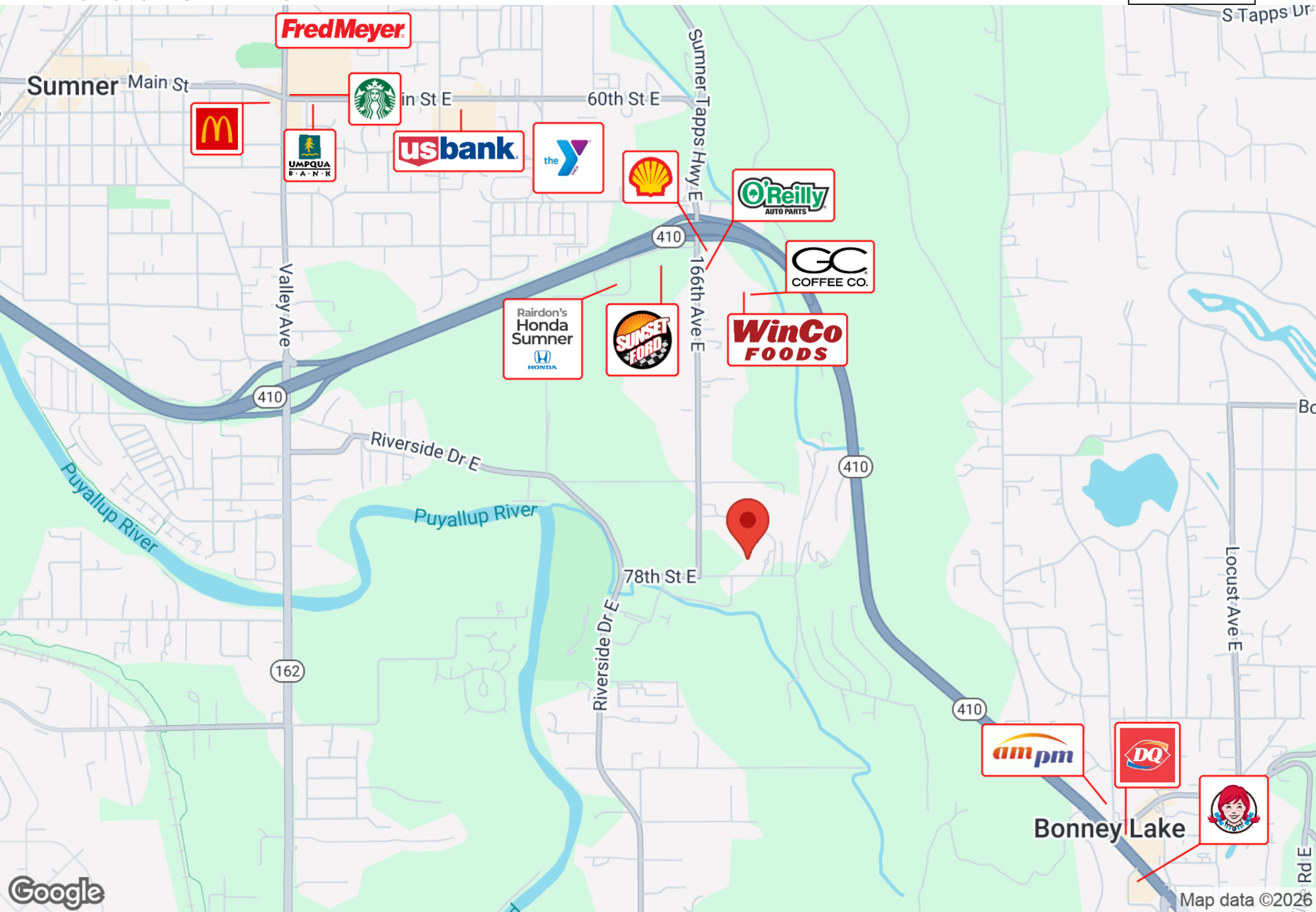
## LOCATION MAPS

16723 78TH STREET EAST



# BUSINESS MAP

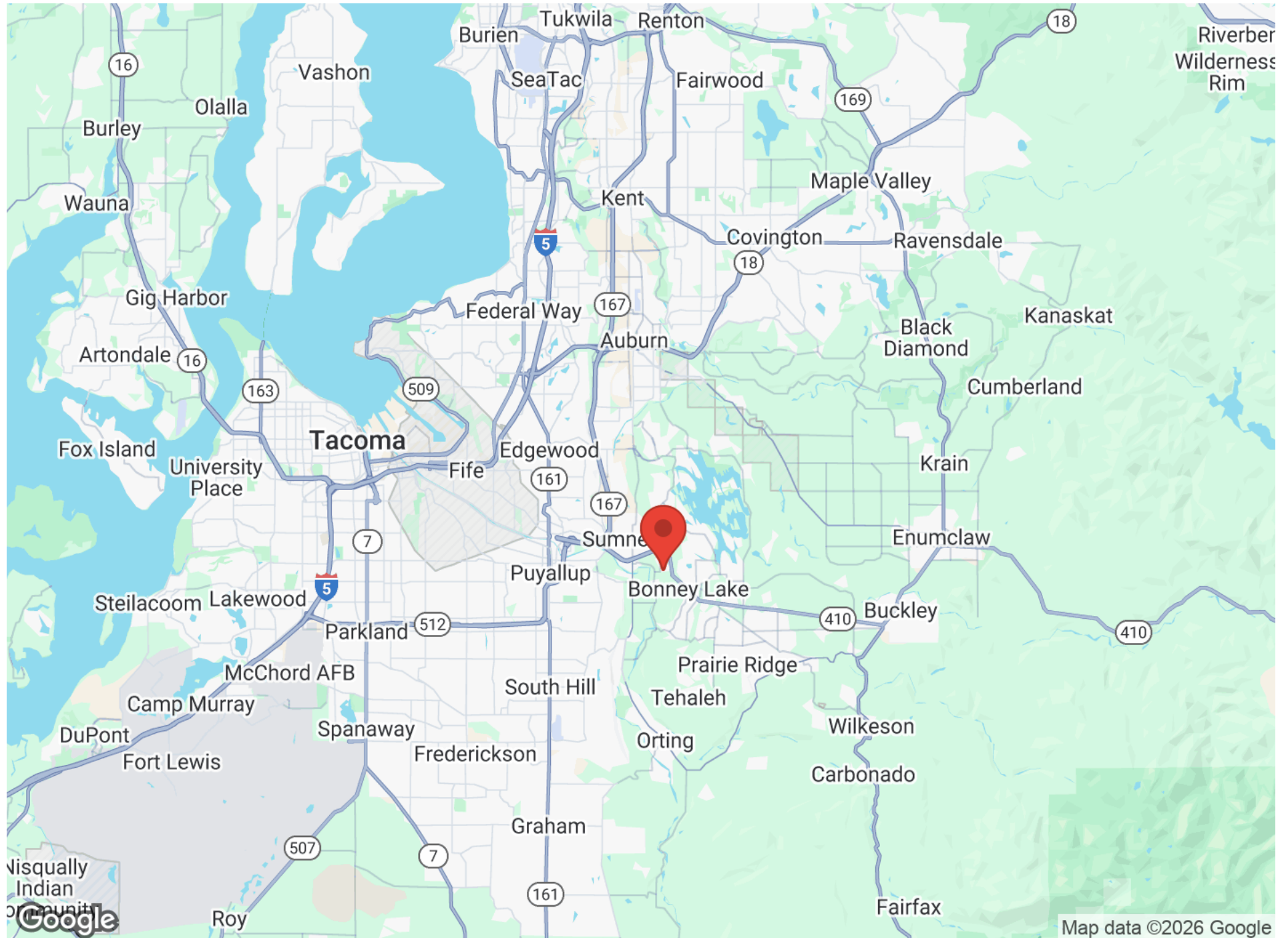
16723 78TH STREET EAST





## REGIONAL MAP

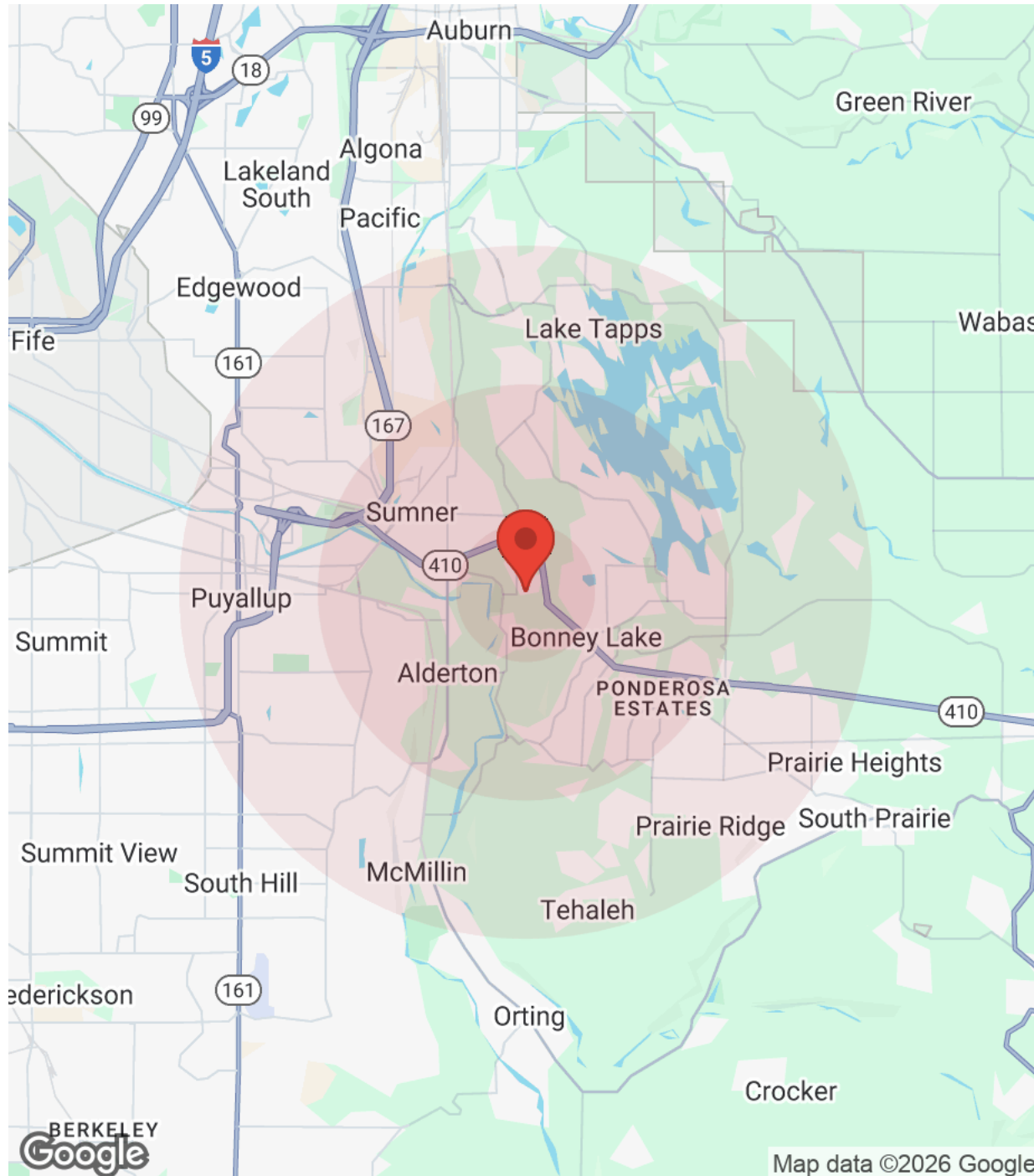
16723 78TH STREET EAST





## DEMOGRAPHICS

16723 78TH STREET EAST



Population	1 Mile	3 Miles	5 Miles
Male	1,771	26,073	73,259
Female	1,639	25,381	73,016
Total Population	3,411	51,453	146,275

Age	1 Mile	3 Miles	5 Miles
Ages 0-14	582	10,055	28,496
Ages 15-24	384	5,800	16,000
Ages 25-54	1,402	21,935	61,434
Ages 55-64	494	6,340	17,484
Ages 65+	549	7,324	22,862

Race	1 Mile	3 Miles	5 Miles
White	2,477	36,743	102,012
Black	75	1,621	5,763
Am In/AK Nat	24	350	1,024
Hawaiian	19	324	1,097
Hispanic	385	5,845	16,237
Asian	159	2,578	9,171
Multi-Racial	248	3,648	10,210
Other	23	345	790

Income	1 Mile	3 Miles	5 Miles
Median	\$112,131	\$125,042	\$114,759
< \$15,000	59	542	1,745
\$15,000-\$24,999	28	488	1,836
\$25,000-\$34,999	23	713	2,174
\$35,000-\$49,999	108	891	3,421
\$50,000-\$74,999	123	1,831	5,963
\$75,000-\$99,999	210	2,518	8,371
\$100,000-\$149,999	223	4,500	13,061
\$150,000-\$199,999	167	2,986	7,743
> \$200,000	293	4,240	11,067

Housing	1 Mile	3 Miles	5 Miles
Total Units	1,309	19,889	59,087
Occupied	1,233	18,708	55,383
Owner Occupied	940	13,379	38,190
Renter Occupied	293	5,329	17,193
Vacant	76	1,181	3,704

Map data ©2026 Google