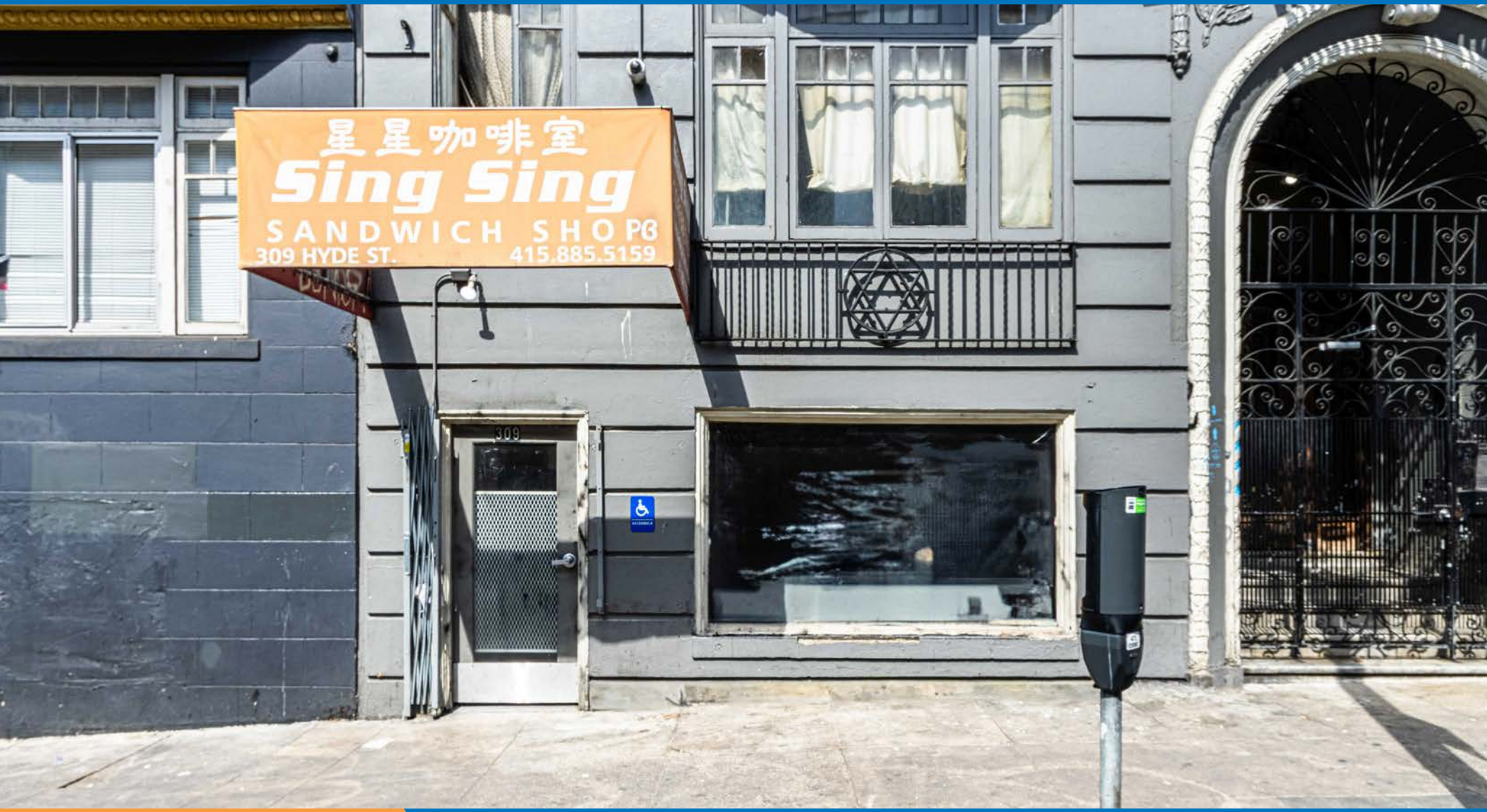


# 309 HYDE STREET

FOR LEASE | CAFE / RETAIL SPACE | LITTLE SAIGON

**TCP**  
**TOUCHSTONE**  
COMMERCIAL PARTNERS



[WWW.TCPRE.COM](http://WWW.TCPRE.COM)

**JARON ELIOPOULOS**  
415.608.6336 | [jaron@tcpre.com](mailto:jaron@tcpre.com)

**GEORGE FARLEY**  
415.994.5767 | [george@tcpre.com](mailto:george@tcpre.com)

**CAMERON TU**  
510.919.8193 | [cameron@tcpre.com](mailto:cameron@tcpre.com)

# 309 HYDE STREET

## PROPERTY SUMMARY

### ADDRESS

309 Hyde Street, San Francisco, CA 94109

### AVAILABLE SPACE

+/- 942 Square Feet

### RENTAL RATE

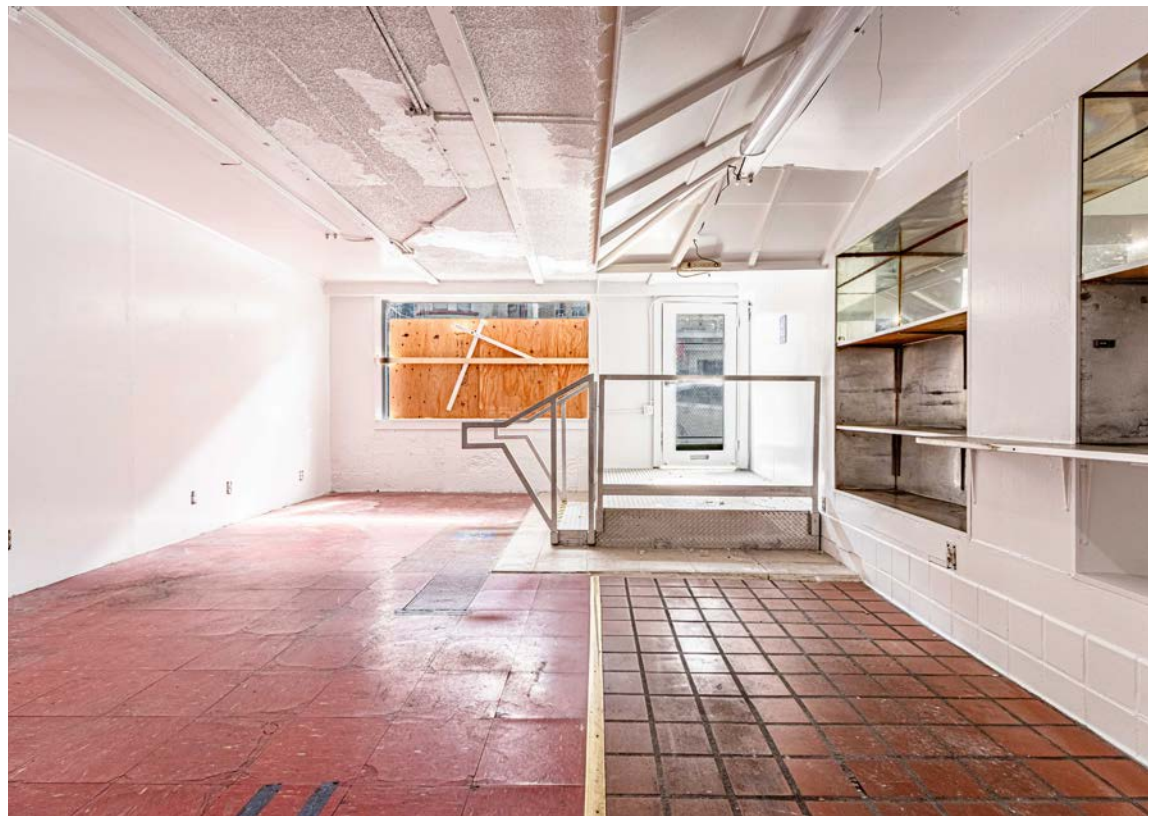
\$2,650 / Month, Industrial Gross

### AVAILABLE

Immediately

## BUILDING ATTRIBUTES

- + Large Signage
- + ADA Approved Entrance
- + Employee Restrooms
- + 3 Compartment Sink
- + Many Uses Considered
- + High Foot Traffic

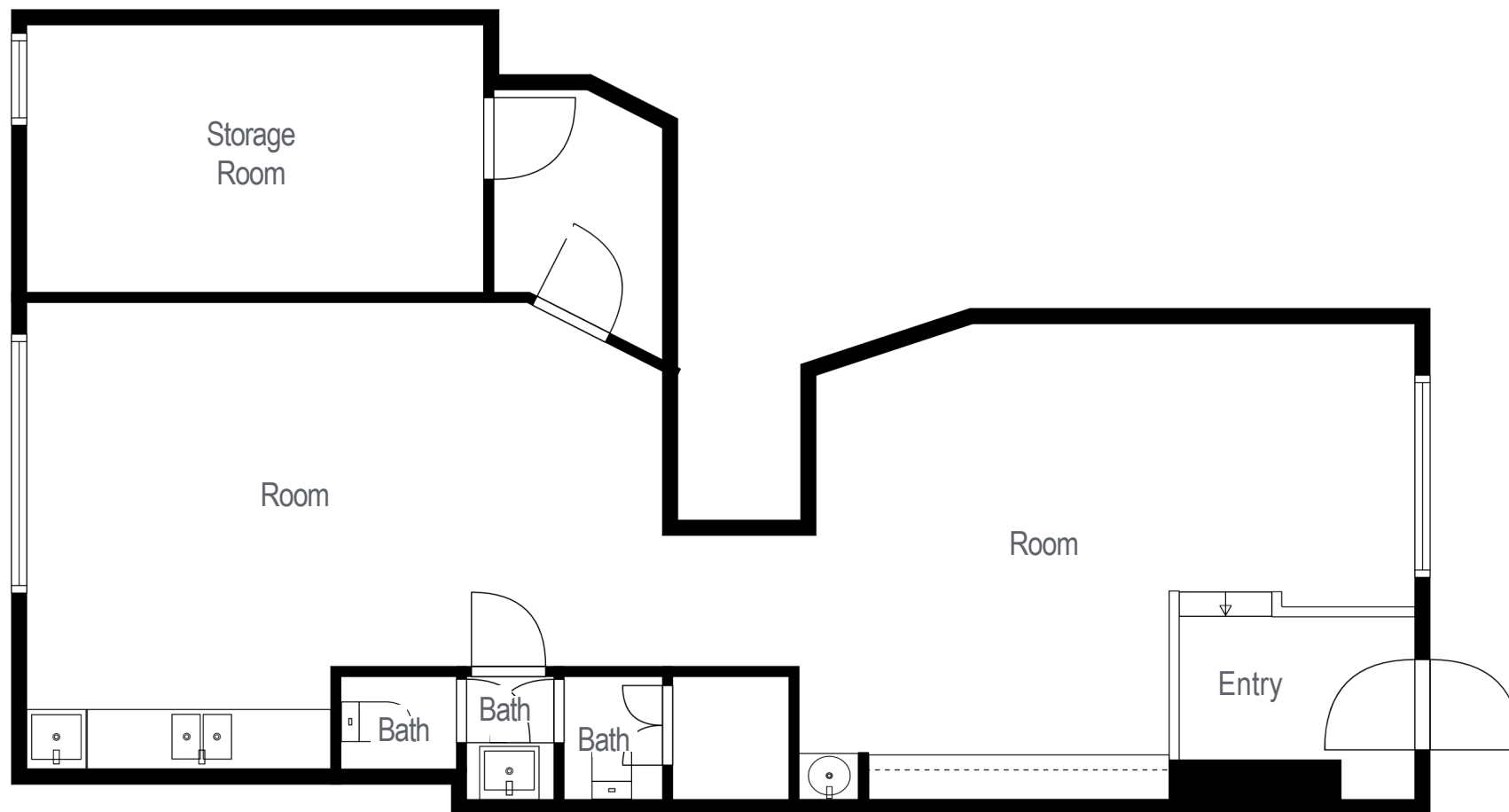




# 309 HYDE STREET

## FLOOR PLAN

+/- 942 Square Feet



Hyde Street

# 309 HYDE STREET

## LOCATION OVERVIEW

Located in the Little Saigon neighborhood of San Francisco, the subject space is situated in a high density location.

## TRANSIT OVERVIEW



**01 MIN** to Eddy St Muni  
**09 MIN** to Civic Center Bart  
**11 MIN** to Jefferson Square



**10 MIN** to SOMA  
**11 MIN** to Mission District  
**13 MIN** to Financial District



**08 MIN** to 80 On-Ramp  
**10 MIN** to 101 On-Ramp  
**12 MIN** to 280 On-Ramp



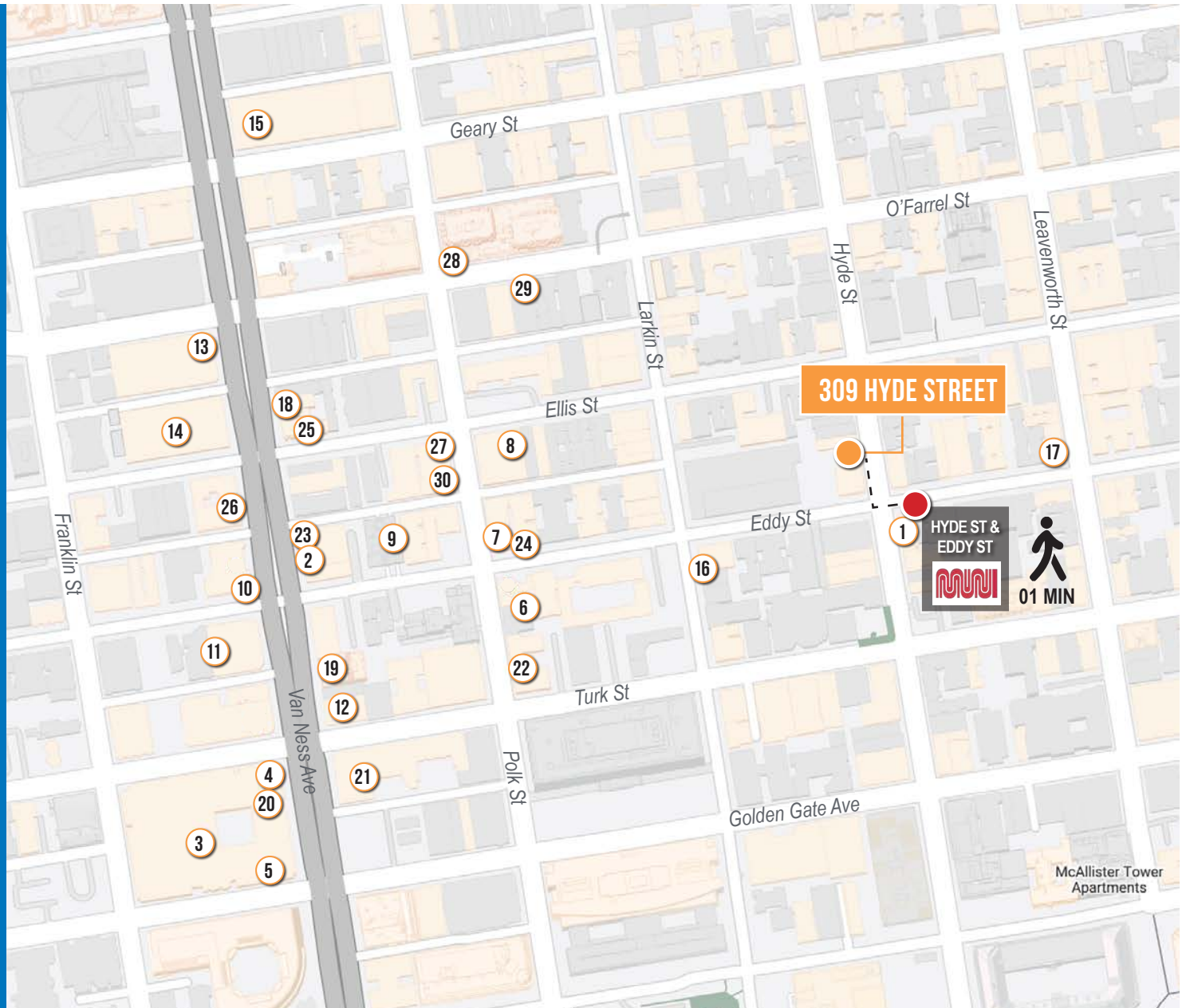
EDDY STREET

HYDE STREET

# 309 HYDE STREET

## NEARBY AMENITIES

- 1.....Sungho
- 2.....Hinata
- 3.....Opera Plaza Cinemas
- 4.....Peet's Coffee
- 5.....Max's Opera Cafe
- 6.....Brenda's French Soul Food
- 7.....Son and Garden
- 8.....Zen Yai
- 9.....City College of San Francisco
- 10.....Round Table Pizza
- 11.....MINI of San Francisco
- 12.....Music Exchange Piano Store
- 13.....Tesla
- 14.....Land Rover San Francisco
- 15.....Sutter Health - CPMC/PAMF
- 16.....Saigon Sandwich
- 17.....Black Cat Jazz Supper Club
- 18.....Van Ness Market
- 19.....Salty's
- 20.....Books Inc.
- 21.....Emergency Dentist SF
- 22.....Unexpected Era Cafe
- 23.....Van Ness Cafe & Gyros
- 24.....Gladstone Market
- 25.....Metro by T-Mobile
- 26.....SF Federal Credit Union
- 27.....Sam's Bakery
- 28.....Bread & Butter Market & Deli
- 29.....Great American Music Hall
- 30.....Tobacco Barn



# 309 HYDE STREET



BLACK CAT JAZZ SUPPER CLUB



TESLA



SUNGO



HINATA



SAIGON SANDWICH

**309** HYDE STREET

星星咖啡室  
**Sing Sing**  
SANDWICH SHOPA  
309 HYDE ST. 415.885.5159



**TCP**  
**TOUCHSTONE**  
COMMERCIAL PARTNERS

Corp. Lic. 01112906  
[www.tcpre.com](http://www.tcpre.com)

**JARON ELIOPOULOS** DRE # 01975155  
415.608.6336 | [jaron@tcpre.com](mailto:jaron@tcpre.com)

**GEORGE FARLEY** DRE # 02233755  
415.994.5767 | [george@tcpre.com](mailto:george@tcpre.com)

**CAMERON TU** DRE # 02100436  
510.919.8193 | [cameron@tcpre.com](mailto:cameron@tcpre.com)

The information presented has been secured from sources we believe to be reliable but we make no representations or warranties, expressed or implied, as to the accuracy of the information. Lessee must verify the information and bears all risk for any inaccuracies.