

# EMPIRE MEDICAL BUILDING

200 Hospital Drive  
Glen Burnie, MD



## Medical Office Space Available for Lease

### The Details

- Easy access to Route 100 via Oakwood Drive.
- Located directly across from University of Maryland Baltimore Washington Medical Center.
- On-site pharmacy, deli, and imaging.
- Rental rate: \$18.00 - \$22.00 NNN

### The Top Practices

- |   |  |
|---|--|
|  Cardiology      |  Vascular |
|  Endocrinology   |  Spine    |
|  Pain Management |  ENT      |

### The Neighborhood



**Joseph McCormick**

301.896.9072

joe.mccormick@transwestern.com

**Michelle Castro**

202.775.7002

michelle.castro@transwestern.com



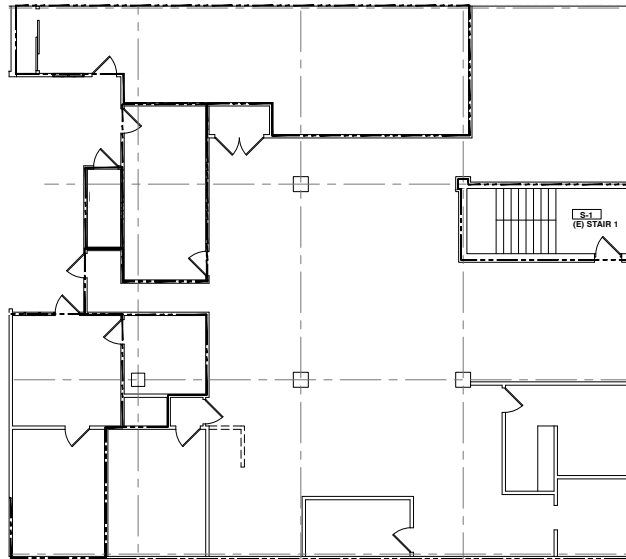
# EMPIRE MEDICAL BUILDING

200 Hospital Drive  
Glen Burnie, MD

# Available Floor Plans

## Suite 20A

5,187 RSF - Lower Level



Want a preview of Suite 20A?

Click the link below to watch the test fit for a:

[Sleep Studies Lab](#)



**T** TRANSWESTERN

**Joseph McCormick**

301.896.9072  
joe.mccormick@  
transwestern.com

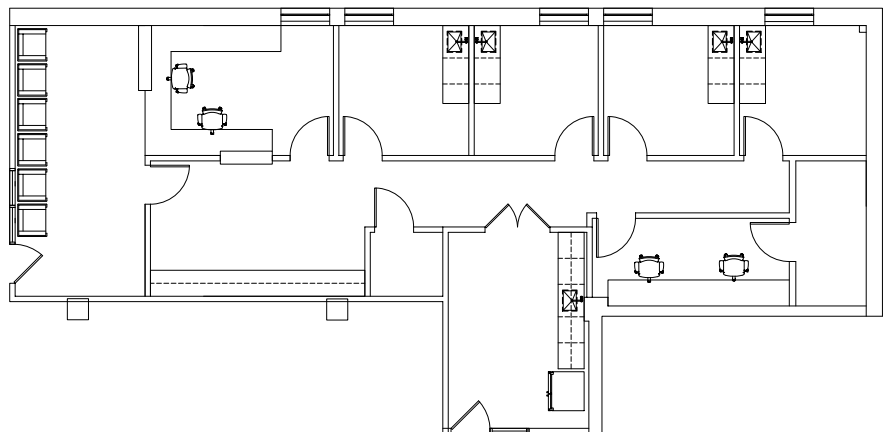
**Michelle Castro**

202.775.7002  
michelle.castro@  
transwestern.com

7373 Wisconsin Avenue  
Suite 850  
Bethesda, MD 20814  
301.571.0900  
transwestern.com

## Suite 100

1,750 RSF - Lobby Exposure



Want a preview of Suite 100?

Click the links below to watch the test fits for a:

[Primary Care Office](#) or [Dental Office](#)

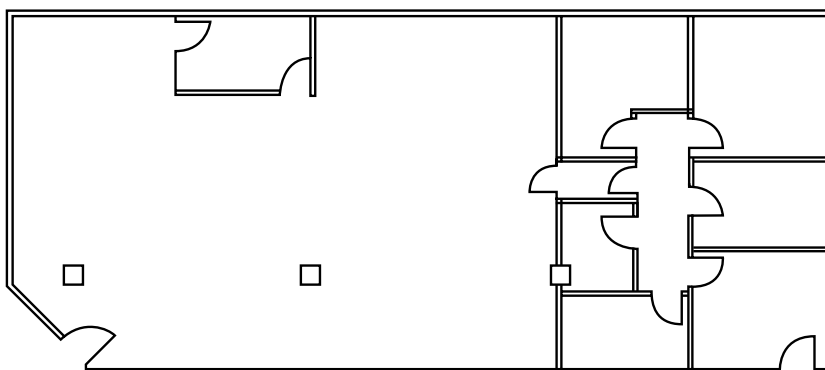
# EMPIRE MEDICAL BUILDING

200 Hospital Drive  
Glen Burnie, MD

## Available Floor Plans

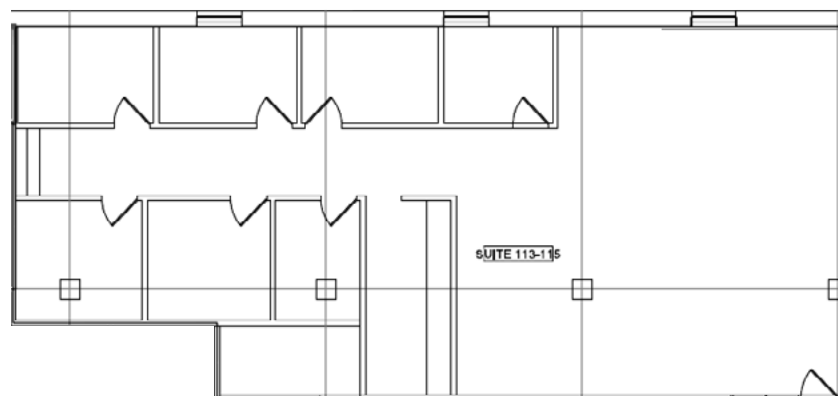
### Suite 107

2,492 RSF



### Suite 113-115

2,329 RSF



**T** TRANSWESTERN

#### Joseph McCormick

301.896.9072

joe.mccormick@

transwestern.com

#### Michelle Castro

202.775.7002

michelle.castro@

transwestern.com

7373 Wisconsin Avenue  
Suite 850  
Bethesda, MD 20814

301.571.0900

transwestern.com