



# FOR LEASE | STREET FRONT MEDICAL OFFICE

1525 KALAKAUA AVENUE · HONOLULU, HAWAII 96826



INDUSTRIAL  
GROUP HAWAII



#### PROPERTY DETAILS

TMK (I) 2-3-019-052

1st Floor 2,050 SF  
improved medical office  
Available now

Base Rent Upon Request

2023 Operating Exp. est. \$0.85 / SF / mo

2023 RPT est. \$0.50 / SF/ mo

Electricity separately metered

Separate parking for tenants and visitors

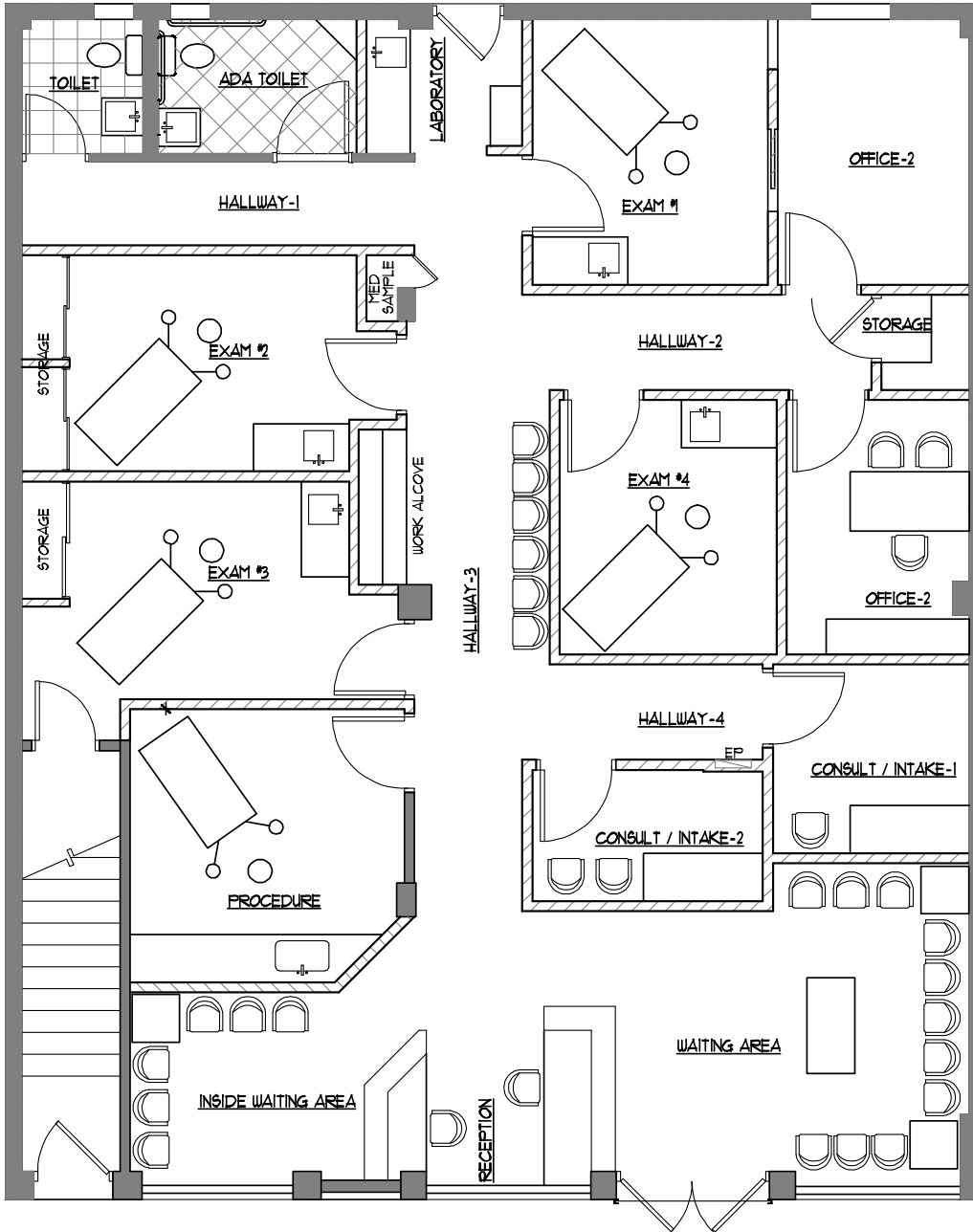


## MEDICAL OFFICE WITH FRONTAGE ON KALAKAUA AVE

Available is a turnkey medical office unit with the following amenities: five (5) private exam rooms with sink and vanity, two (2) private offices and two (2) patient consulting rooms, ADA compliant restroom, lab area with sink and vanity, beautiful waiting lobbies with reception area. All of this with street front visibility on Kalakaua Avenue with ample patient parking. Conveniently located on the upper end of Kalakaua off of South King Street.



## FLOOR PLAN







INDUSTRIAL  
GROUP HAWAII

**JAY K. ELICKER (B) CCIM, SIOR**  
Senior Vice President · RB 21204  
808-218-8318 · jelicker@caahawaii.com

**SEAN DO (S) CCIM**  
Vice President · RS 75040  
808-387-6903 · sdo@caahawaii.com

**KEVIN KO (S)**  
Senior Associate · RS 82504  
808-971-1986 · kko@caahawaii.com